

FOR LEASE

Baltimore County, MD

6 GARRISON VIEW ROAD

OWINGS MILLS, MARYLAND 21117

AVAILABLE

2,000 - 4,909 sf

RENTAL RATE

\$21.50/sf, MG

TERM

At least 3 years

PARKING RATIO

3.5: 1,000 sf

OCCUPANCY

Immediate

NEARBY AMENITIES

Dining, Retail, Banking, Personal Services

HIGHLIGHTS

- ▶ Rarely available, stand-alone office in the Reisterstown Road Corridor
- ▶ Fully built out with high-end finishes
- ▶ Directly across from Foundry Row (opening Fall '16) with shared intersection
- ▶ Professionally managed with management on-site
- ▶ All the perks of a Class 'A' office space



Meghan Roy

410.494.4846

mroy@mackenziecommercial.com

Mackenzie Commercial Real Estate Services, LLC

Matt Mueller

410.494.6658

mmueller@mackenziecommercial.com

2328 W. Joppa Road, Suite 200 | Lutherville-Timonium, Maryland 21093

Henson Ford

410.494.6657

hford@mackenziecommercial.com



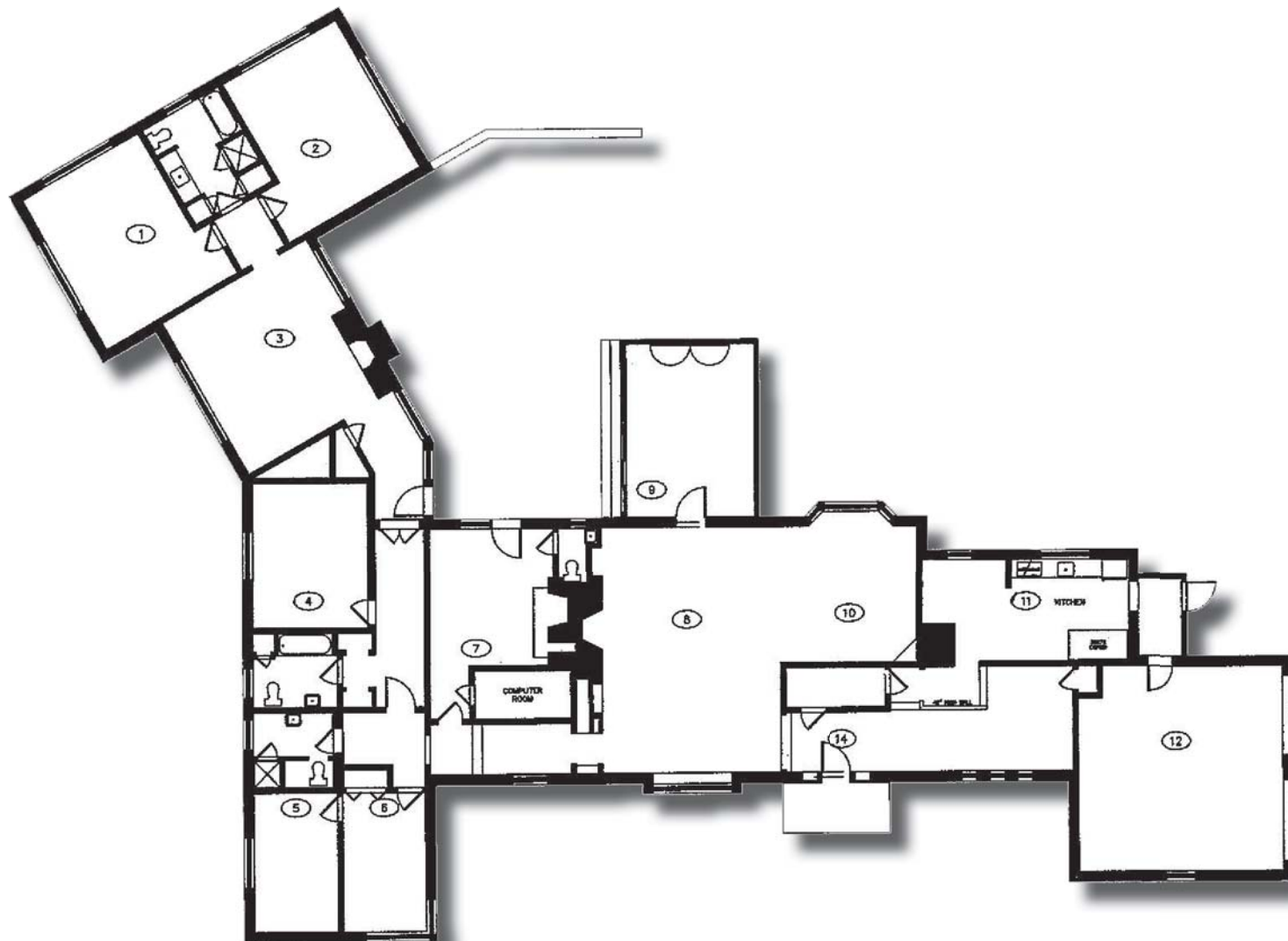
www.MACKENZIECOMMERCIAL.com

FOR LEASE

Baltimore County, MD

FLOOR PLAN

6 GARRISON VIEW ROAD | OWINGS MILLS, MARYLAND, 21117



Meghan Roy

☎ 410.494.4846

✉ mroy@mackenziecommercial.com

MacKenzie Commercial Real Estate Services, LLC

Matt Mueller

☎ 410.494.6658

✉ mmueller@mackenziecommercial.com

• 410-821-8585 • 2328 W. Joppa Road, Suite 200 | Lutherville-Timonium, Maryland 21093 • www.MACKENZIECOMMERCIAL.com

Henson Ford

☎ 410.494.6657

✉ hford@mackenziecommercial.com