

FOR LEASE

Baltimore City, Maryland

TURN-KEY QUICK SERVE RESTAURANT

3-5 N. EUTAW STREET | BALTIMORE, MARYLAND, 21201

AVAILABLE

2,241 sf

HIGHLIGHTS

- ▶ Located at "CENTERPOINT", a downtown, mixed-use project w/ 392 units, 33,000+ sf retail
- ▶ Directly across from newly renovated Hippodrome Theatre
- ▶ Diagonal to Royal Farms Arena
- ▶ 2 blocks north of Baltimore Convention Center
- ▶ 2 blocks from University of Maryland Hospital and Medical Campus, Dental School, Law School and Pharmacy School (14,700 students/staff)
- ▶ 2,000+ luxury apartments and lofts within a 3-block radius
- ▶ 3 blocks north of Oriole Park at Camden Yards
- ▶ 15+ hotels and 3,000+ hotel rooms within a 3-block radius



Henry Deford | Real Estate Advisor

410.494.4861 | hdeford@mackenziecommercial.com

Mackenzie Commercial Real Estate Services, LLC • 410-821-8585 • 2328 W. Joppa Road, Suite 200 | Lutherville-Timonium, Maryland 21093 • www.MACKENZIECOMMERCIAL.com

Mike Gioioso | Real Estate Advisor

410.494.4866 | mgioioso@mackenziecommercial.com

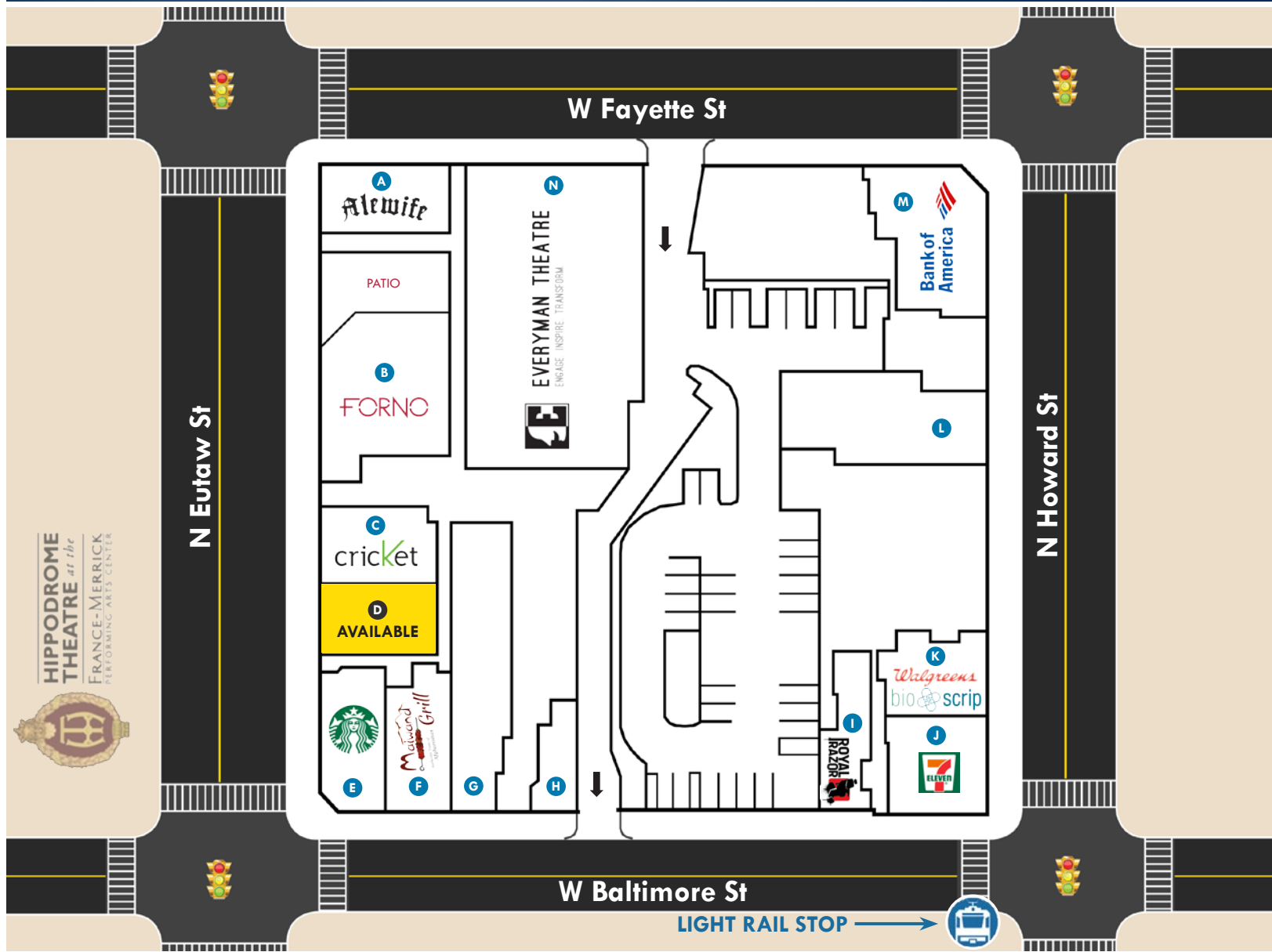
FOR LEASE

Baltimore City, Maryland

SITE PLAN

3-5 N. EUTAW STREET | BALTIMORE, MARYLAND, 21201

- A Alewife
- B Forno Wine Bar
- C Cricket Wireless
- D AVAILABLE: 2,241 sf**
- E Starbucks
- F Maiwand Grill
- G Available
- H Available
- I Royal Razor Barbershop
- J 7-Eleven
- K Walgreens BioScrip
- L Available
- M Bank of America
- N Everyman Theatre

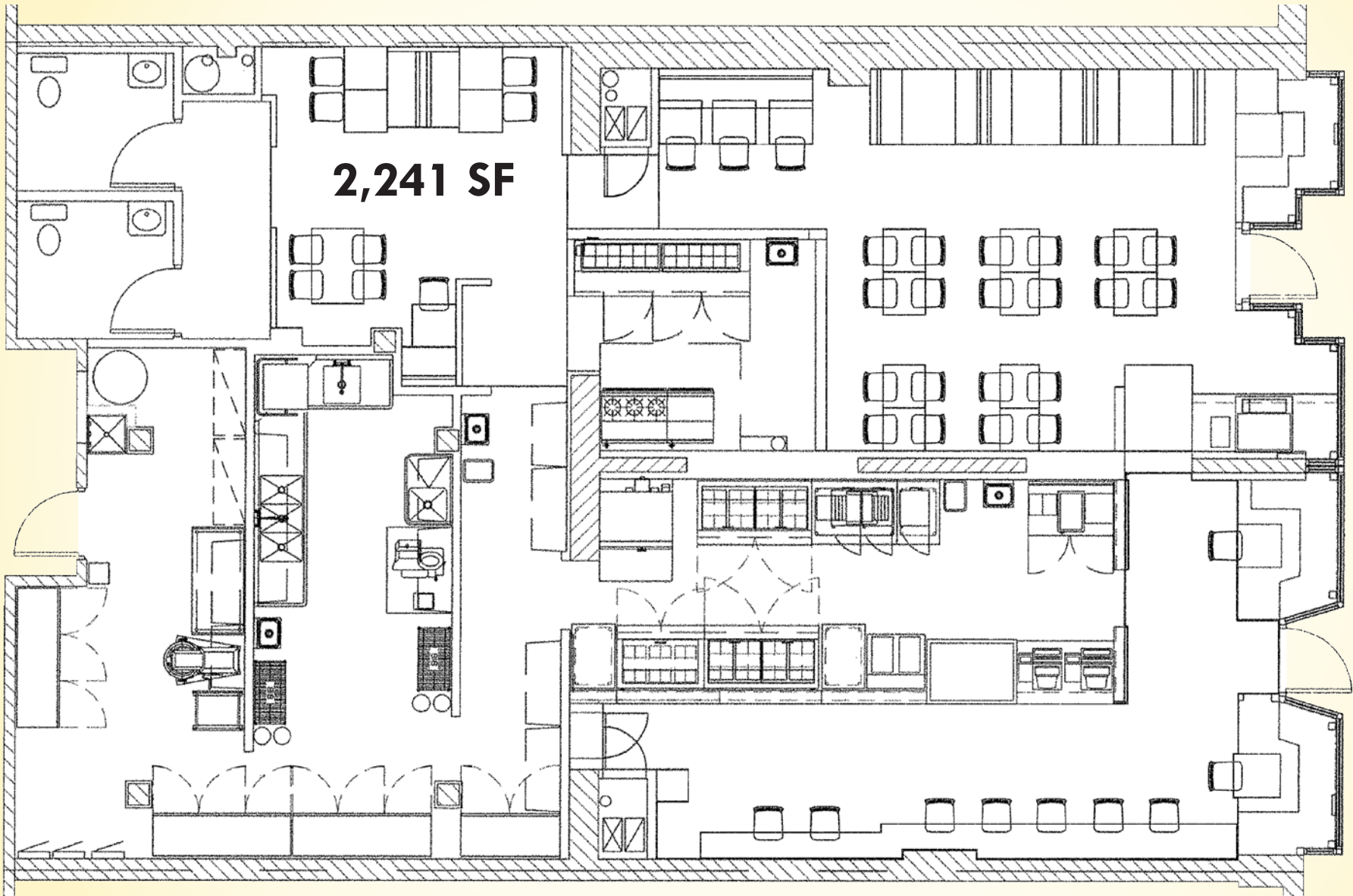


FOR LEASE

Baltimore City, Maryland

FLOOR PLAN

3-5 N. EUTAW STREET | BALTIMORE, MARYLAND, 21201



N. EUTAW ST



Henry Deford | Real Estate Advisor

☎ 410.494.4861 ✉ hdeford@mackenziecommercial.com

MacKenzie Commercial Real Estate Services, LLC • 410-821-8585 • 2328 W. Joppa Road, Suite 200 | Lutherville-Timonium, Maryland 21103 • www.MACKENZIECOMMERCIAL.com

Mike Gioioso | Real Estate Advisor

☎ 410.494.4866 ✉ mgioioso@mackenziecommercial.com

FOR LEASE

Baltimore City, Maryland

BIRDSEYE

3-5 N. EUTAW STREET | BALTIMORE, MARYLAND, 21201

DOMINANT LIFESTYLES

1/2 mile radius



67% Metro Renters



LEARN MORE

esri.com/tapestry

Average HH Size: 1.66

Median Age: 31.8

Median HH Income: \$52,000

12% College Towns



LEARN MORE

esri.com/tapestry

Average HH Size: 2.12

Median Age: 24.3

Median HH Income: \$28,000

9% Young and Restless



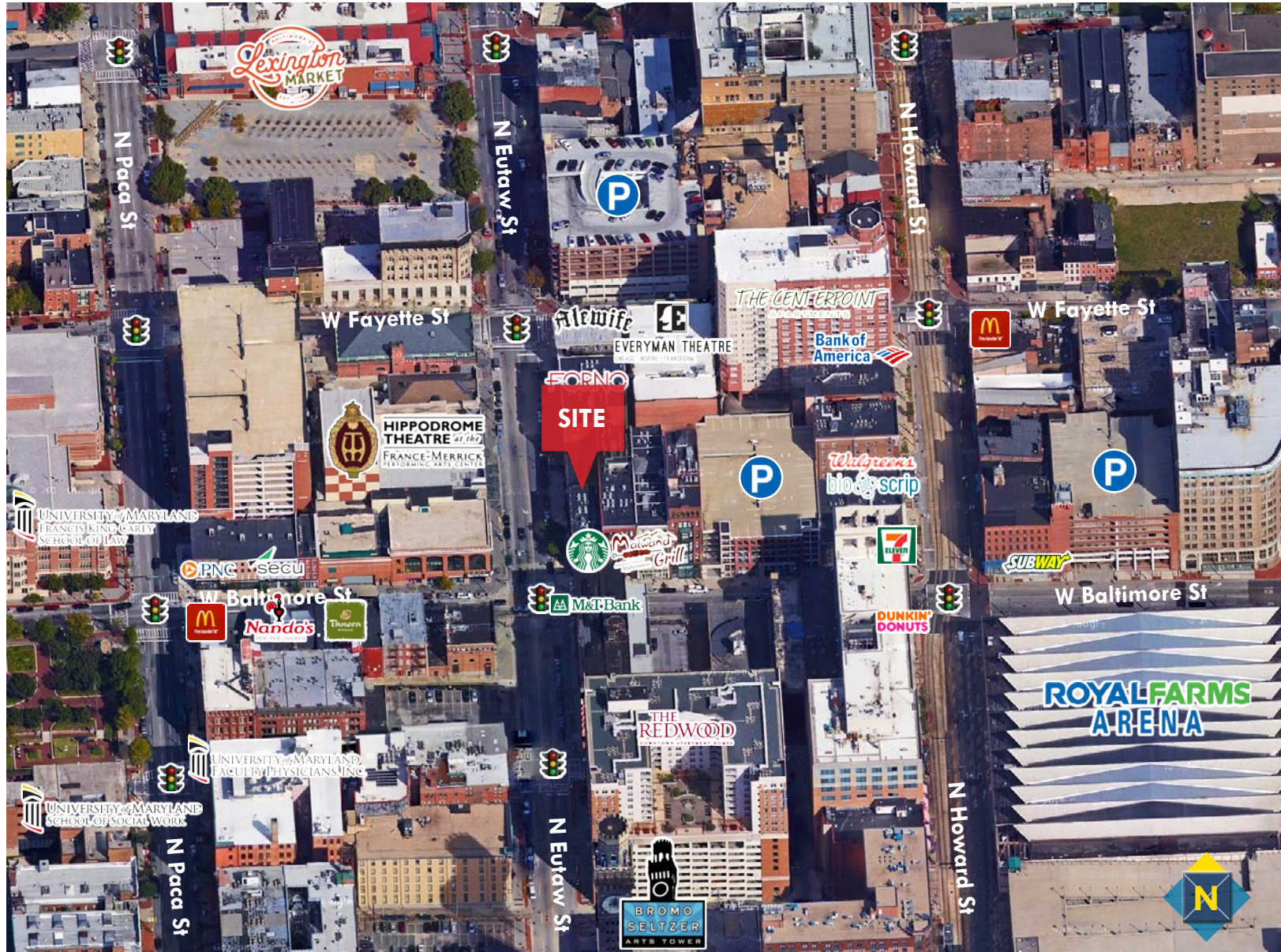
LEARN MORE

esri.com/tapestry

Average HH Size: 2.02

Median Age: 29.4

Median HH Income: \$36,000



Henry Deford | Real Estate Advisor

410.494.4861 | hdeford@mackenziecommercial.com

Mackenzie Commercial Real Estate Services, LLC • 410-821-8585 • 2328 W. Joppa Road, Suite 200 | Lutherville-Timonium, Maryland 21103 • www.MACKENZIECOMMERCIAL.com

Mike Gioioso | Real Estate Advisor

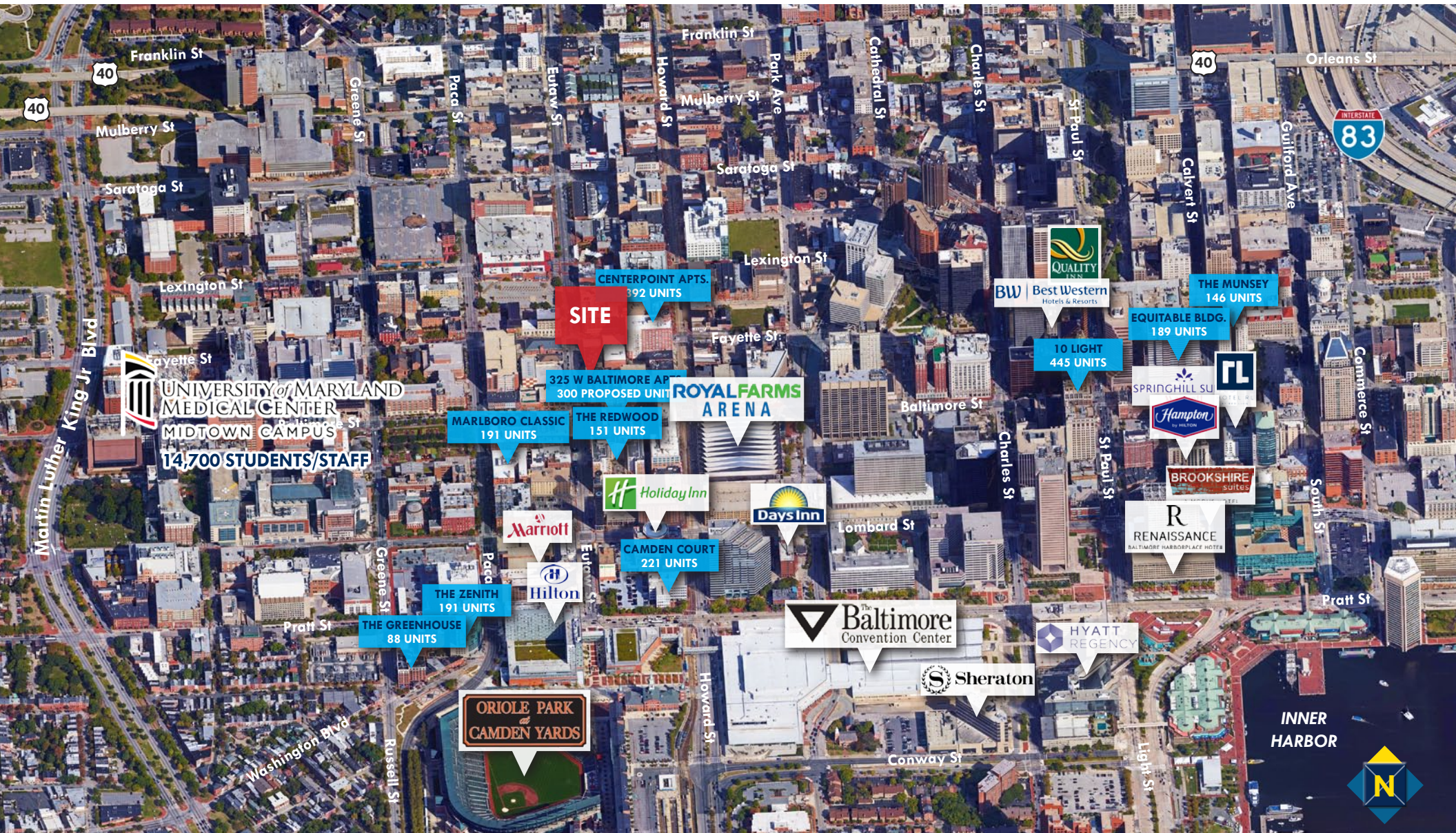
410.494.4866 | mgioioso@mackenziecommercial.com

FOR LEASE

Baltimore City, Maryland

TRADE AREA

3-5 N. EUTAW STREET | BALTIMORE, MARYLAND, 21201



Henry Deford | Real Estate Advisor

410.494.4861 | hdeford@mackenziecommercial.com

Mackenzie Commercial Real Estate Services, LLC • 410-821-8585 • 2328 W. Joppa Road, Suite 200 | Lutherville-Timonium, Maryland 21103 • www.MACKENZIECOMMERCIAL.com

Mike Gioioso | Real Estate Advisor

410.494.4866 | mgioioso@mackenziecommercial.com

FOR LEASE

Baltimore City, Maryland

LOCATION / DEMOGRAPHICS

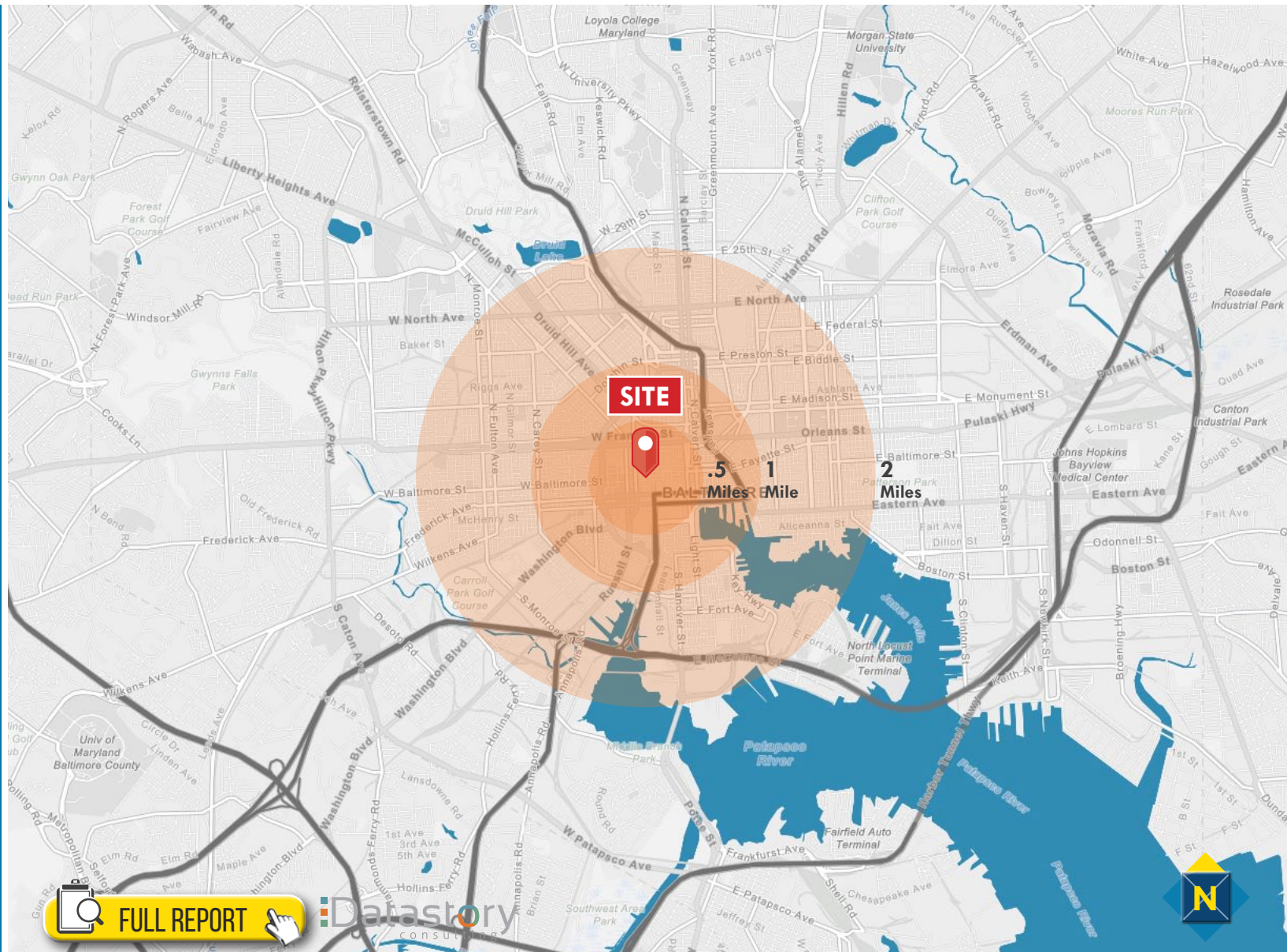
3-5 N. EUTAW STREET | BALTIMORE, MARYLAND, 21201

DEMOGRAPHICS

	.5 miles	1 mile	2 miles
Population	8,783	42,482	148,512
Number of Households	5,400	19,640	65,497
Average Household Income	\$62,554	\$58,756	\$59,864
Daytime Employees	47,146	108,751	176,241

RETAIL EXPENDITURES

	.5 miles	1 mile	2 miles
Furniture & Home	\$4.8M	\$16.5M	\$55.7M
Entertainment & Recreation	\$12.5M	\$42.9M	\$145.9M
Fashion & Clothing	\$9.8M	\$32.8M	\$109.8M
Food & Drink	\$15.1M	\$50.3M	\$167.7M



FULL REPORT

Datastory consulting



Henry Deford | Real Estate Advisor
 ☎ 410.494.4861 ✉ hdeford@mackenziecommercial.com

Mike Gioioso | Real Estate Advisor
 ☎ 410.494.4866 ✉ mgioioso@mackenziecommercial.com

No warranty or representation, expressed or implied, is made as to the accuracy of the information contained herein, and same is submitted subject to errors, omissions, change of price, rental or other conditions, withdrawal without notice, and to any specific listing conditions imposed by our principals.