

SUBLEASE

Baltimore County, MD

FOXLEIGH BUILDING

2330 JOPPA ROAD | LUTHERVILLE, MARYLAND 21093

AVAILABLE

Suite 175: 741 sf

BUILDING SIZE

105,000 sf

BUILDING CLASS

A

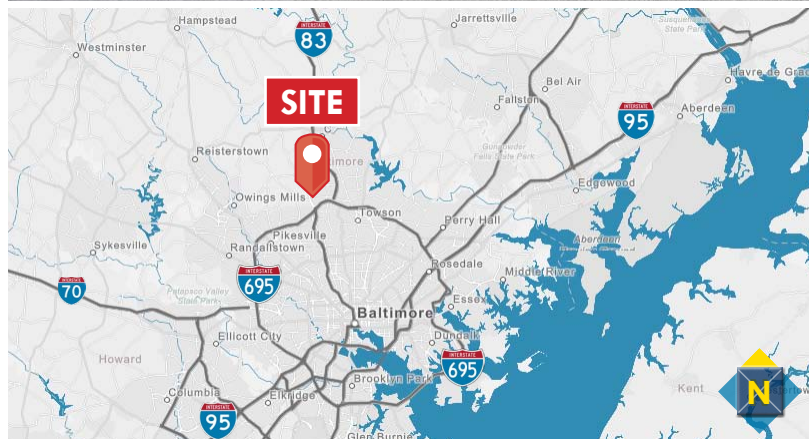
RENTAL RATE

Negotiable

HIGHLIGHTS

- ▶ Rarely available Class A sublease under 1,000 square feet through July 2021
- ▶ Conveniently located at the intersection of I-695 and I-83
- ▶ Walking distance to many amenities including the new *tark's grill and bar* and the *Shops at Greenspring Station*
- ▶ One of Baltimore County's most sought-after locations
- ▶ Ideal buildout for financial industries

RARELY AVAILABLE
SMALL OFFICE SPACE IN GREENSPRING STATION AREA



Joe Bradley

410.494.4892

jbradley@mackenziecommercial.com

Meghan Roy

410.494.4846

mroy@mackenziecommercial.com

Matt Mueller

410.494.6658

mmueller@mackenziecommercial.com

Bill Whitty

410.494.4862

bwhitty@mackenziecommercial.com

Henson Ford

410.494.6657

hford@mackenziecommercial.com

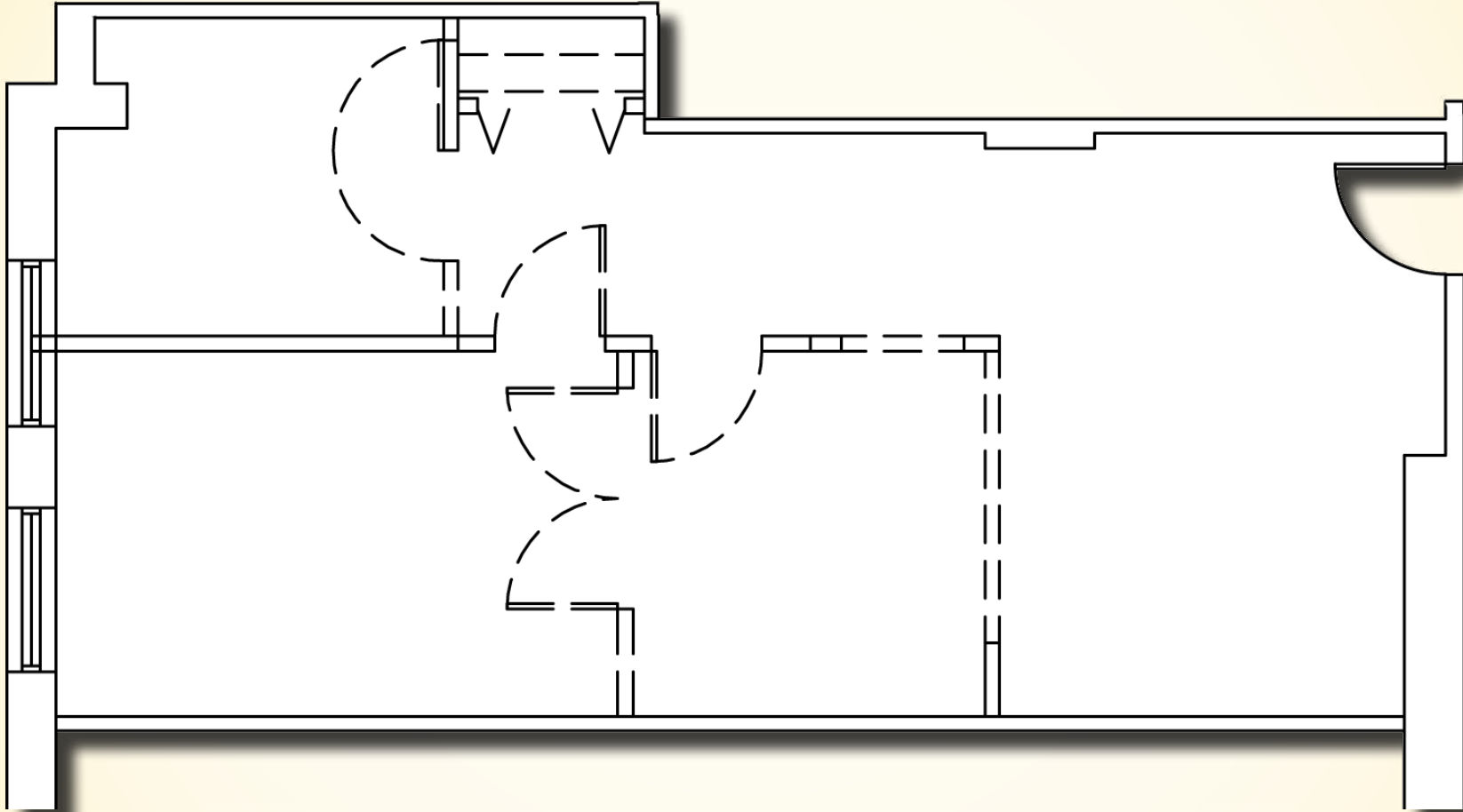
Mackenzie Commercial Real Estate Services, LLC • 410-821-8585 • 2328 W. Joppa Road, Suite 200 | Lutherville-Timonium, Maryland 21093 • www.MACKENZIECOMMERCIAL.com

SUBLEASE

Baltimore County, MD

FLOOR PLAN

FOXLEIGH BUILDING | 2330 JOPPA ROAD | LUTHERVILLE, MARYLAND 21093



Joe Bradley

☎ 410.494.4892

✉ jbradley@mackenziecommercial.com

Meghan Roy

☎ 410.494.4846

✉ mroy@mackenziecommercial.com

Matt Mueller

☎ 410.494.6658

✉ mmueller@mackenziecommercial.com

Bill Whitty

☎ 410.494.4862

✉ bwhitty@mackenziecommercial.com

Henson Ford

☎ 410.494.6657

✉ hford@mackenziecommercial.com