

FOR LEASE

Baltimore City, Maryland

1014 MORTON STREET

BALTIMORE | MARYLAND 21201

AVAILABLE

1st floor: 2,850 sf

2nd floor: 2,850 sf

Total: 5,700 sf

RENTAL RATE

\$17.25/psf - Tenant pays HVAC, electric and janitorial costs

ZONING

C-2: commercial use

TERM

3-10 years

PARKING RATIO

Garage spaces at \$165.00/ mos. per space

OCCUPANCY

Immediate

HIGHLIGHTS

- ▶ Historic fire station converted to office
- ▶ Private entrances with exterior signage available
- ▶ 1st floor and 2nd floor space with high ceilings and skylight
- ▶ Mostly open space with conference rooms, kitchens and office work areas
- ▶ Tenant controlled HVAC system

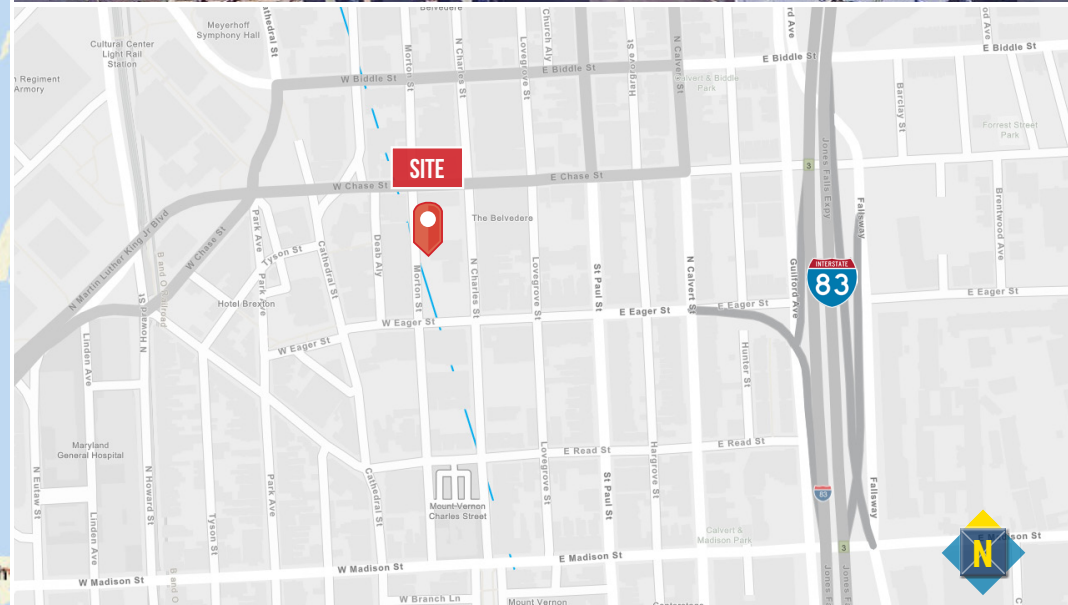
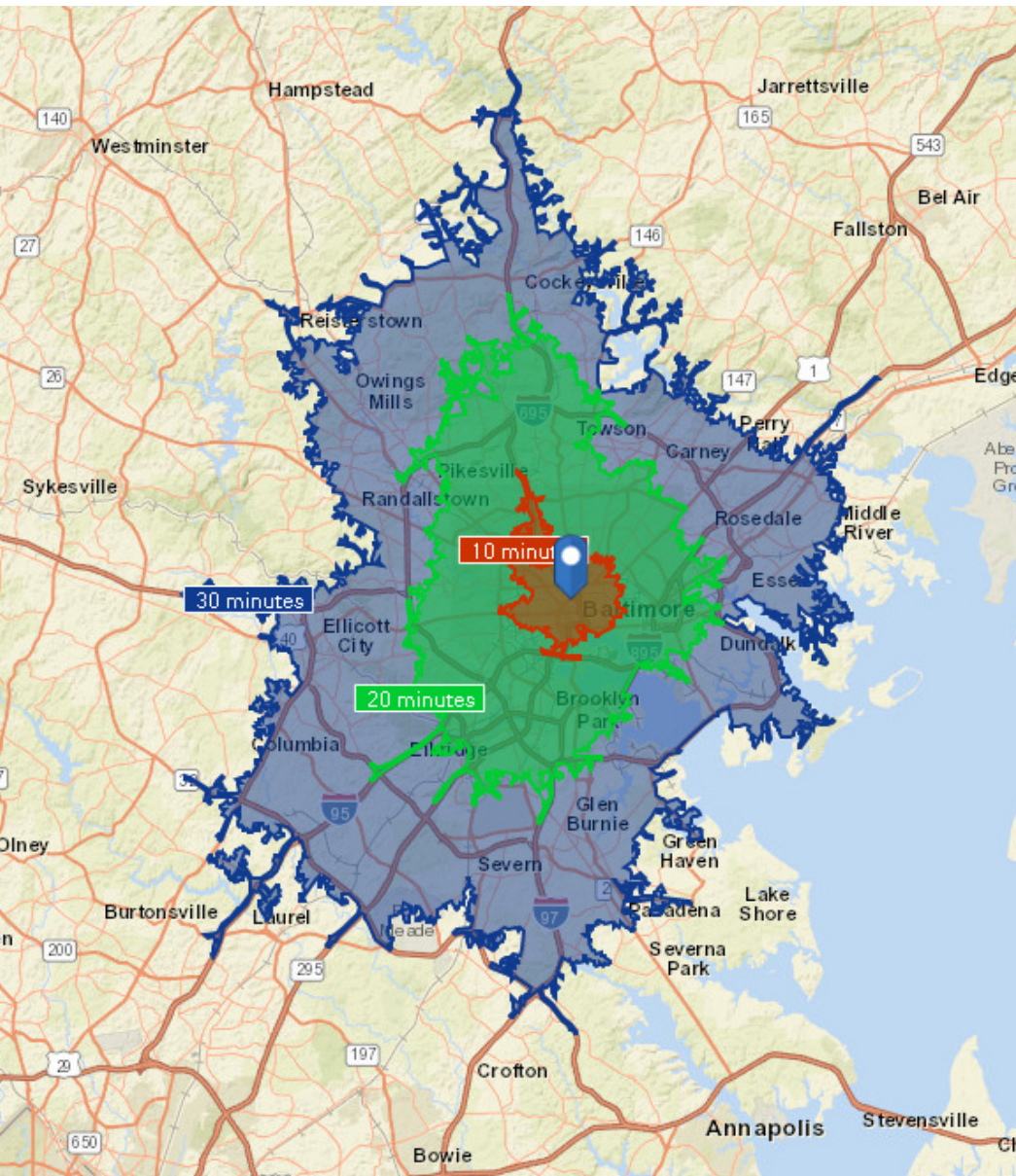


FOR LEASE

Baltimore City, Maryland

LOCATION

1014 MORTON STREET | BALTIMORE, MARYLAND 21201

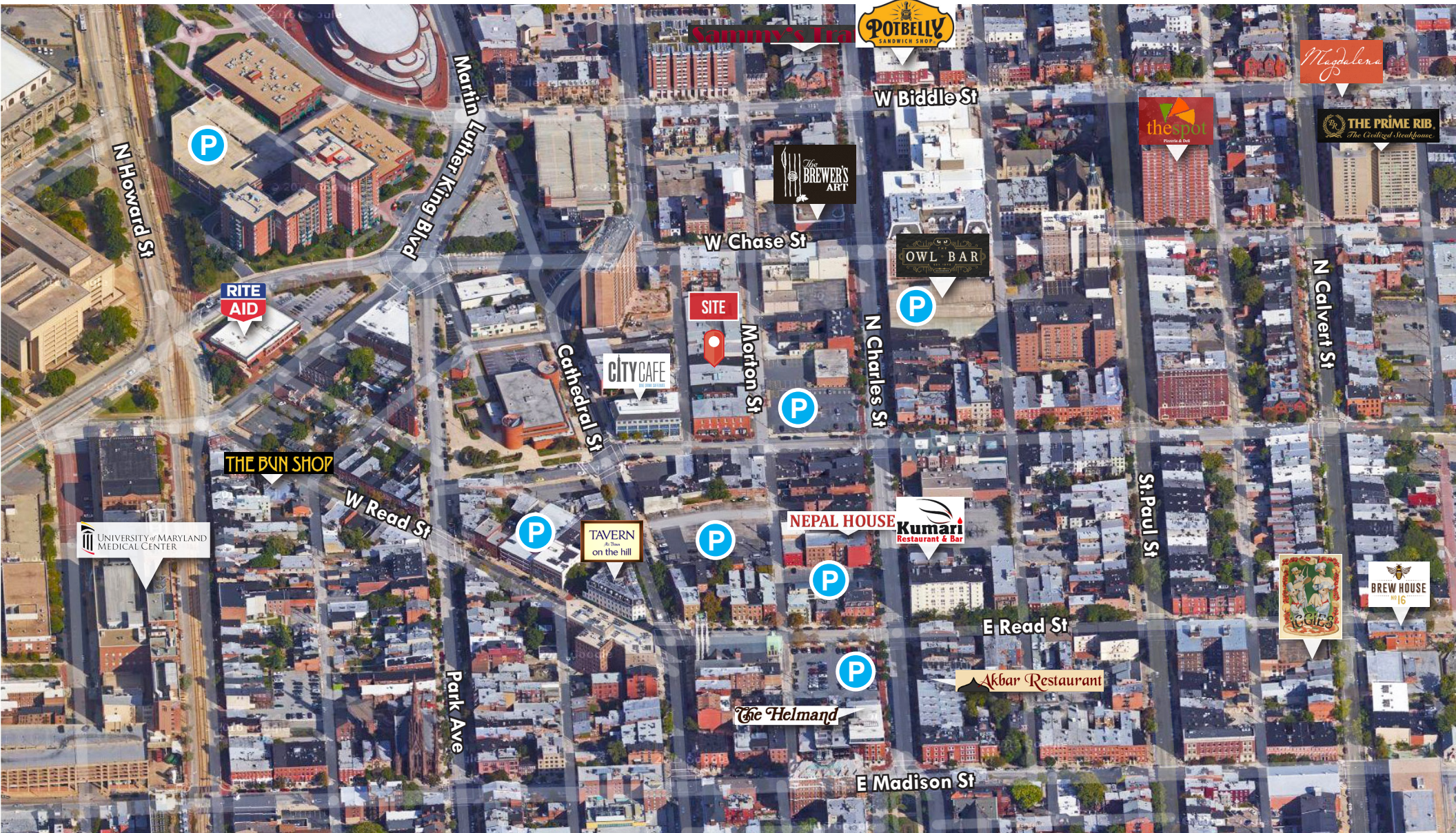


FOR LEASE

Baltimore City, Maryland

AMENITIES MAP

1014 MORTON STREET | BALTIMORE, MARYLAND 21201



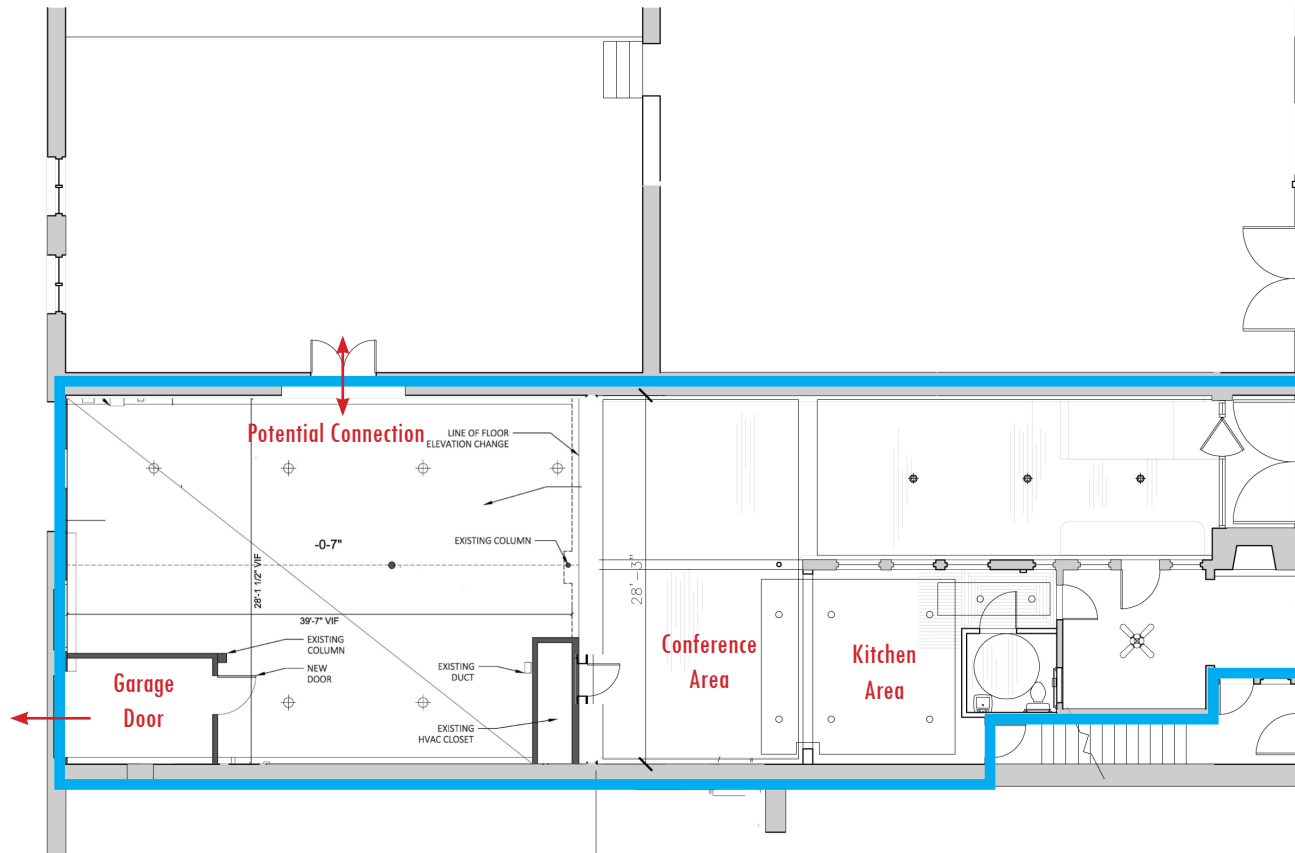
FOR LEASE

Baltimore City, Maryland

1ST FLOOR PLAN

1014 MORTON STREET | BALTIMORE, MARYLAND 21201

1st Floor



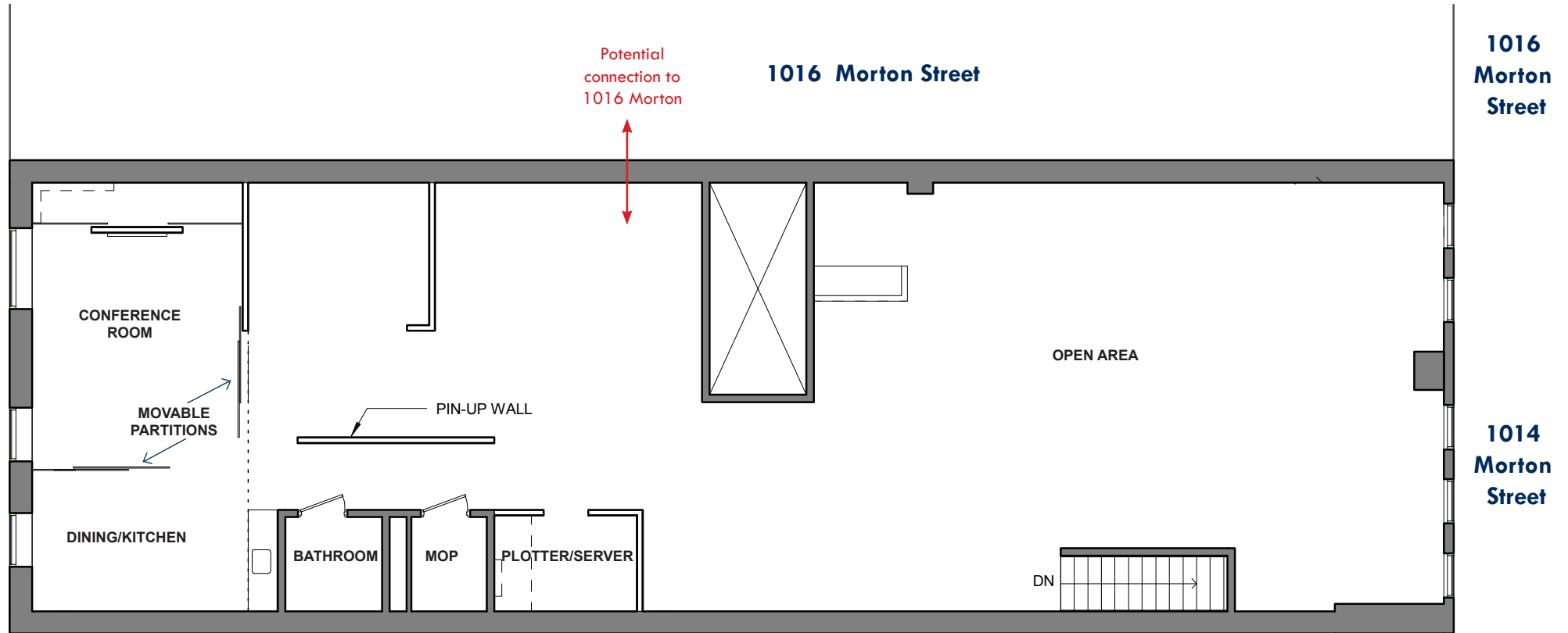
2,850 square feet

FOR LEASE

Baltimore City, Maryland

2ND FLOOR PLAN

1014 MORTON STREET | BALTIMORE, MARYLAND 21201

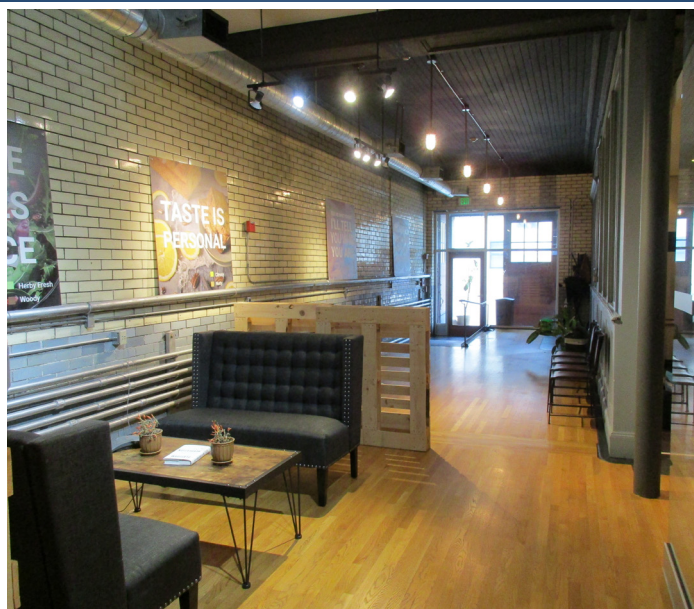


FOR LEASE

Baltimore City, Maryland

1ST FLOOR PHOTOS

1014 MORTON STREET | BALTIMORE, MARYLAND 21201



FOR LEASE

Baltimore City, Maryland

2ND FLOOR PHOTOS

1014 MORTON STREET | BALTIMORE, MARYLAND 21201

