

FOR LEASE

Baltimore City, Maryland

1014 MORTON STREET

BALTIMORE | MARYLAND 21201

AVAILABLE

1st floor: 2,850 sf

RENTAL RATE

\$12.00/psf triple net - Tenant pays pro-rated share of operating expenses and real estate taxes

ZONING

C-2: commercial use

TERM

3-10 years

PARKING RATIO

Garage spaces at \$165.00/ mos. per space

OCCUPANCY

Immediate

HIGHLIGHTS

- ▶ Historic fire station converted to office
- ▶ Private entrance with exterior signage available
- ▶ 1st floor space with high ceilings and skylight
- ▶ Mostly open space with conference room, kitchen and office work area
- ▶ Tenant controlled HVAC system

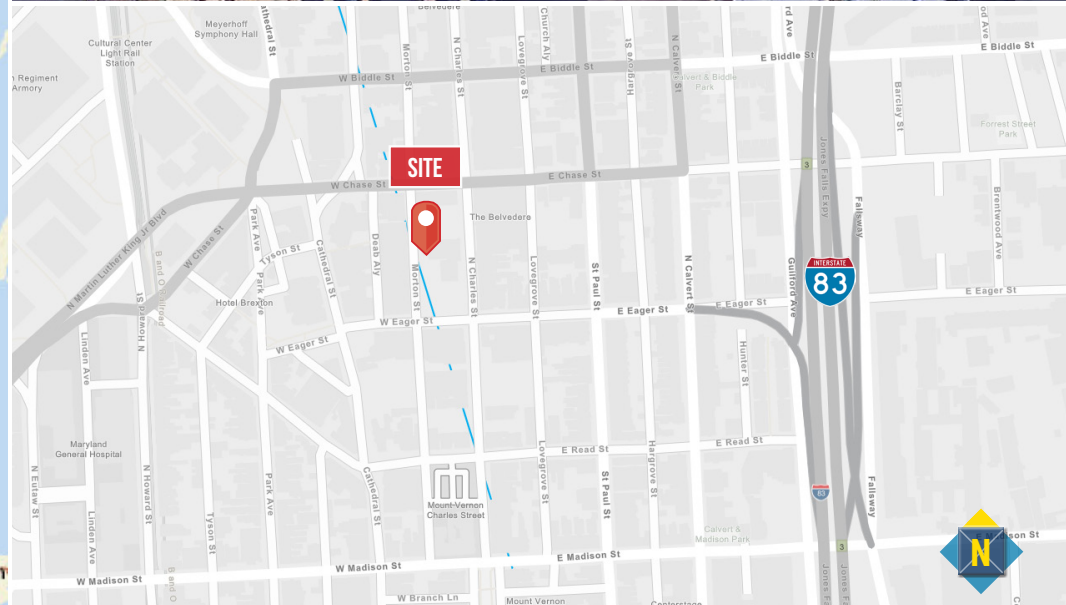
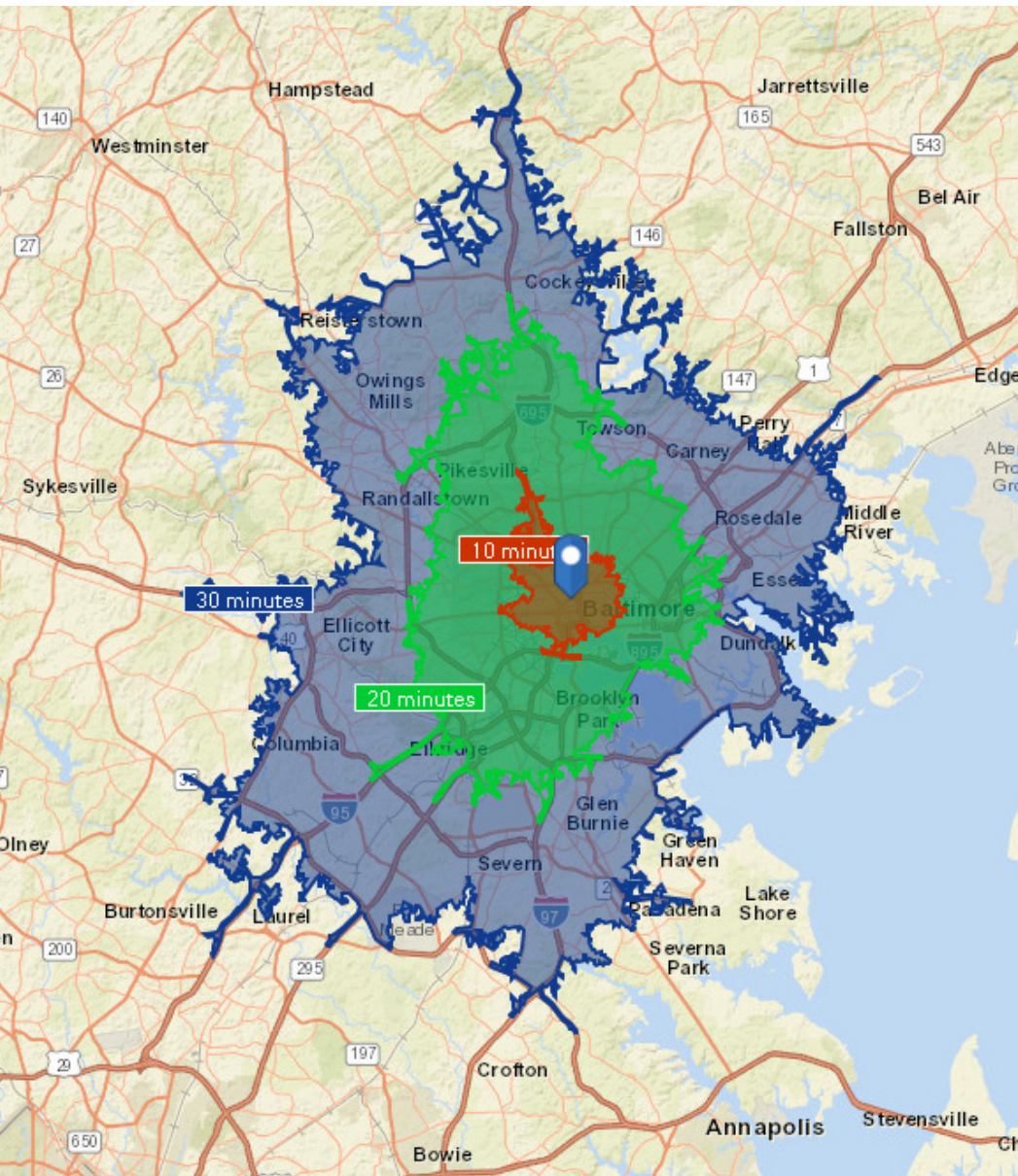


FOR LEASE

Baltimore City, Maryland

LOCATION

1014 MORTON STREET | BALTIMORE, MARYLAND 21201

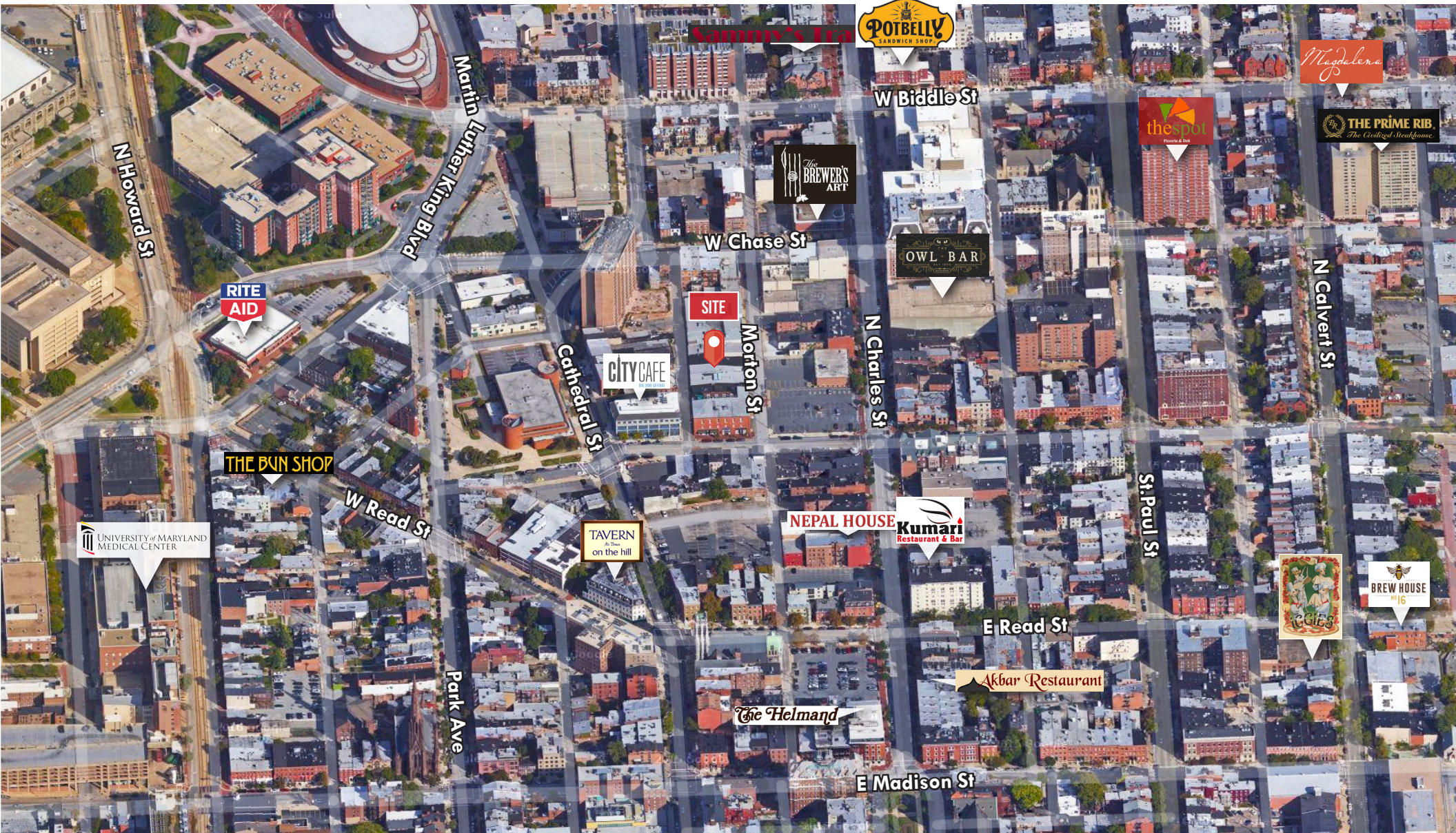


FOR LEASE

Baltimore City, Maryland

AMENITIES MAP

1014 MORTON STREET | BALTIMORE, MARYLAND 21201



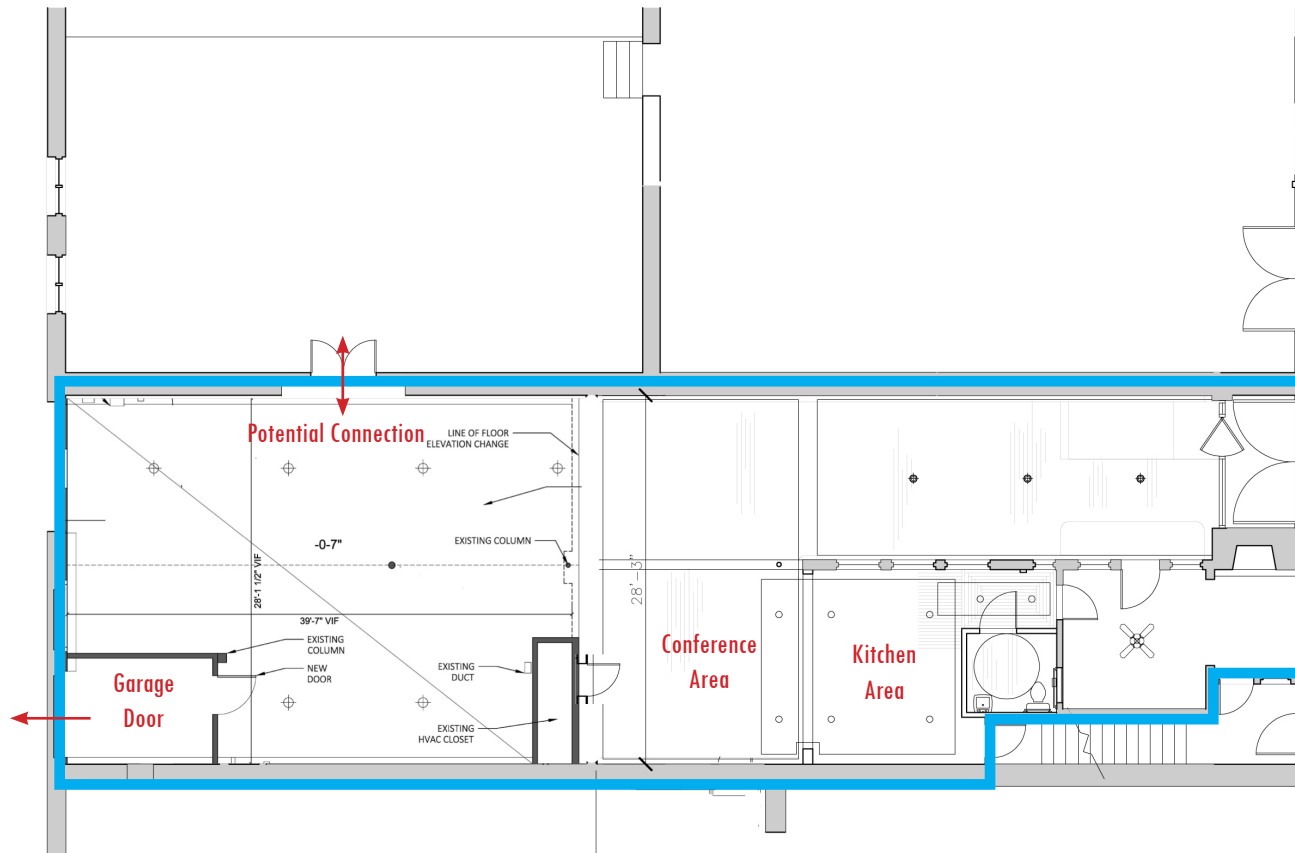
FOR LEASE

Baltimore City, Maryland

1ST FLOOR PLAN

1014 MORTON STREET | BALTIMORE, MARYLAND 21201

1st Floor



2,850 square feet

FOR LEASE

Baltimore City, Maryland

1ST FLOOR PHOTOS

1014 MORTON STREET | BALTIMORE, MARYLAND 21201

