

FOR LEASE

 Baltimore City, Maryland

1120 NORTH CHARLES STREET

BALTIMORE, MARYLAND 21201

AVAILABLE

- ▶ 1st Floor:
 - ▶ 2,924 rsf
- ▶ 3rd Floor: 7,522 rsf
 - ▶ 1,459 rsf
 - ▶ 2,231 rsf
 - ▶ 3,593 rsf
- ▶ 4th Floor:
 - ▶ 398 rsf
 - ▶ 3,593 rsf

RENTAL RATE

Office: \$16.50/sf, Full Service

HIGHLIGHTS

- ▶ Located in Historic Charles Street Corridor
- ▶ ADA accessibility with elevator access
- ▶ Security camera with key-card access
- ▶ 5 minutes from Downtown Baltimore
- ▶ Convenient to numerous Mt. Vernon restaurants, coffee shops and attractions including the Meyerhoff and Lyric

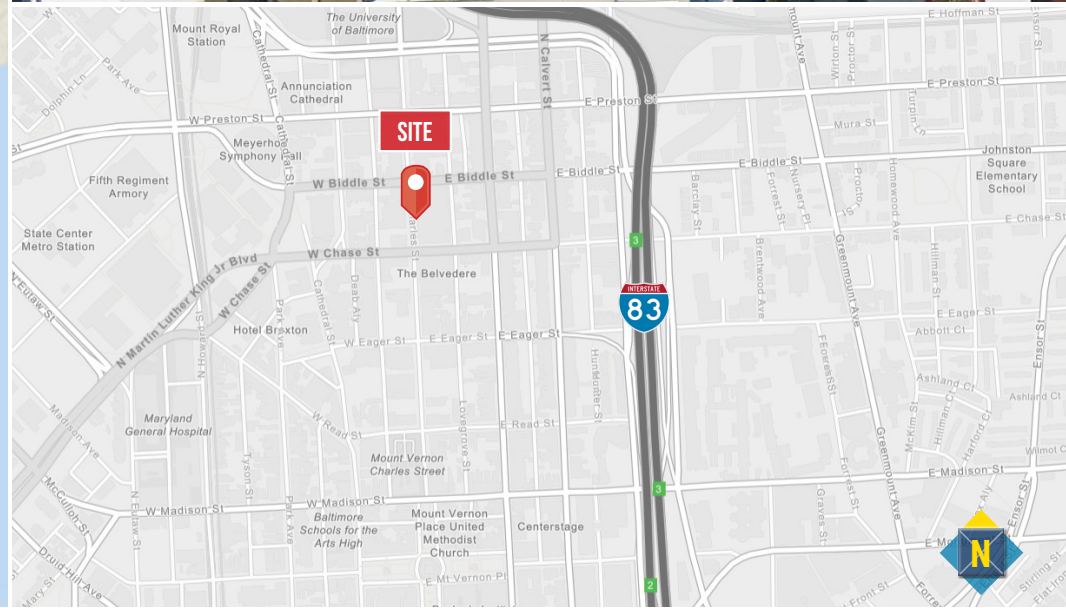
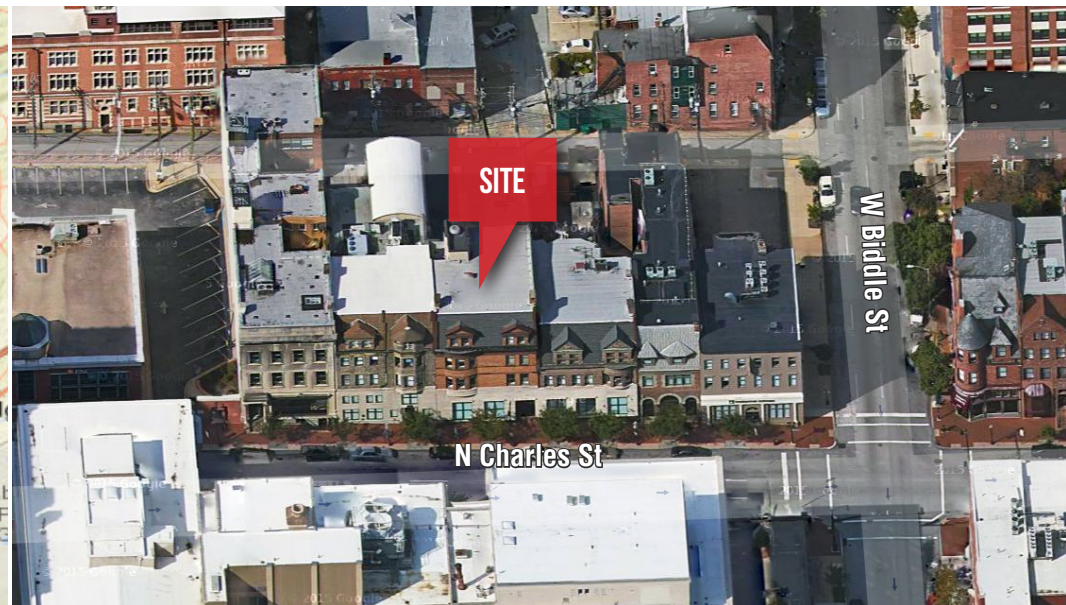
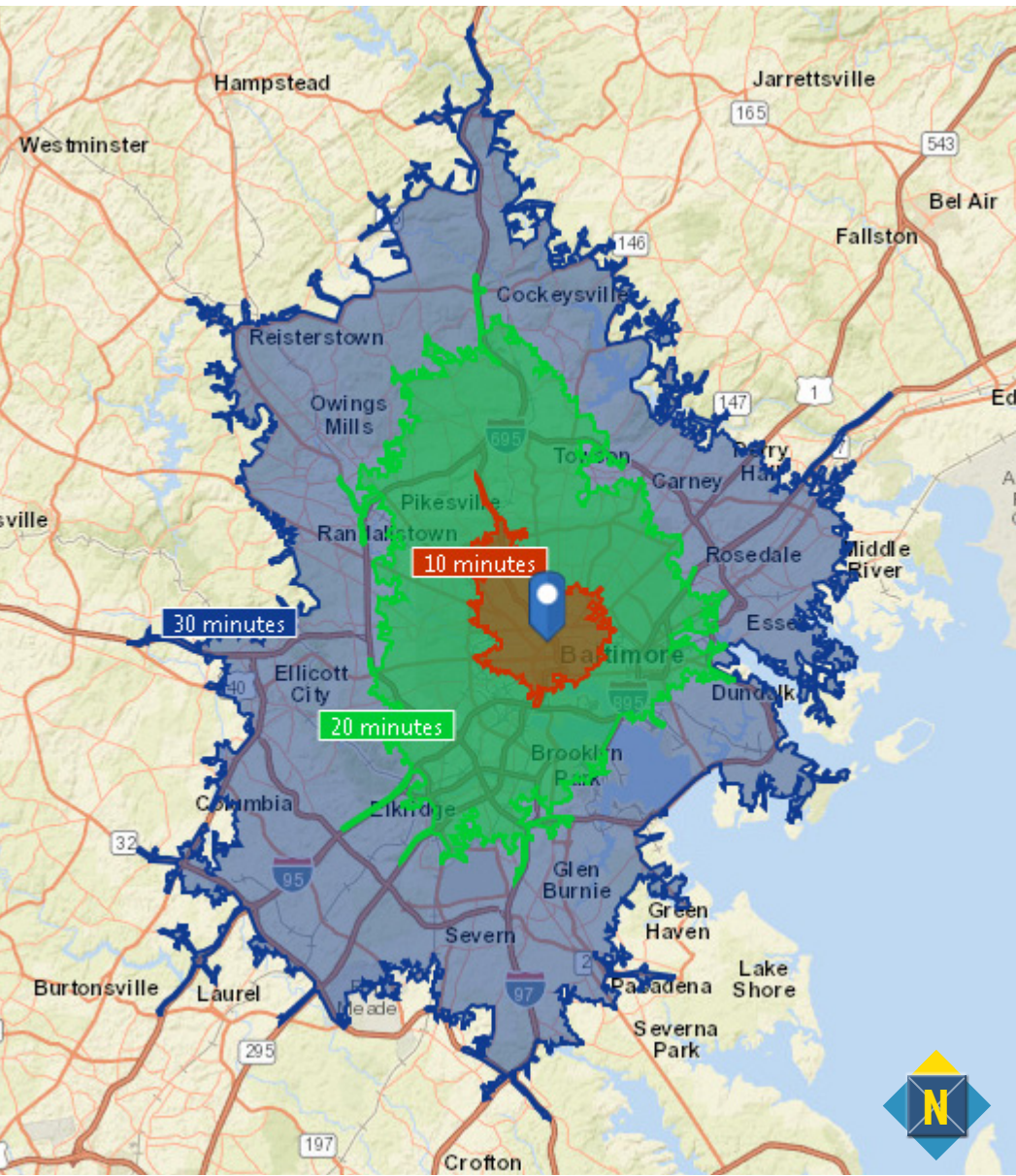


FOR LEASE

Baltimore City, Maryland

LOCATION

1120 NORTH CHARLES STREET | BALTIMORE, MARYLAND 21201

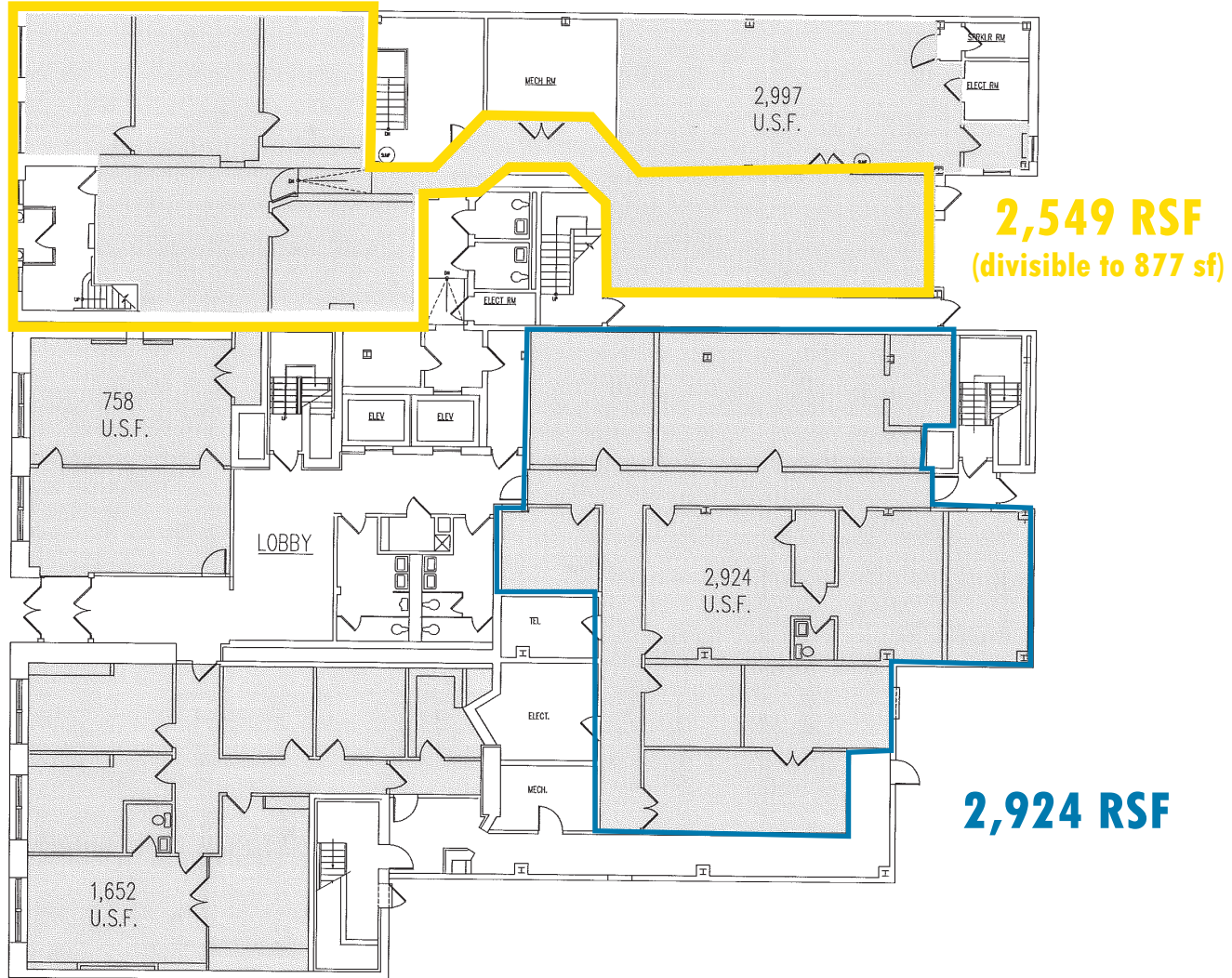


FOR LEASE

Baltimore City, Maryland

1ST FLOOR PLAN

1120 NORTH CHARLES STREET | BALTIMORE, MARYLAND 21201

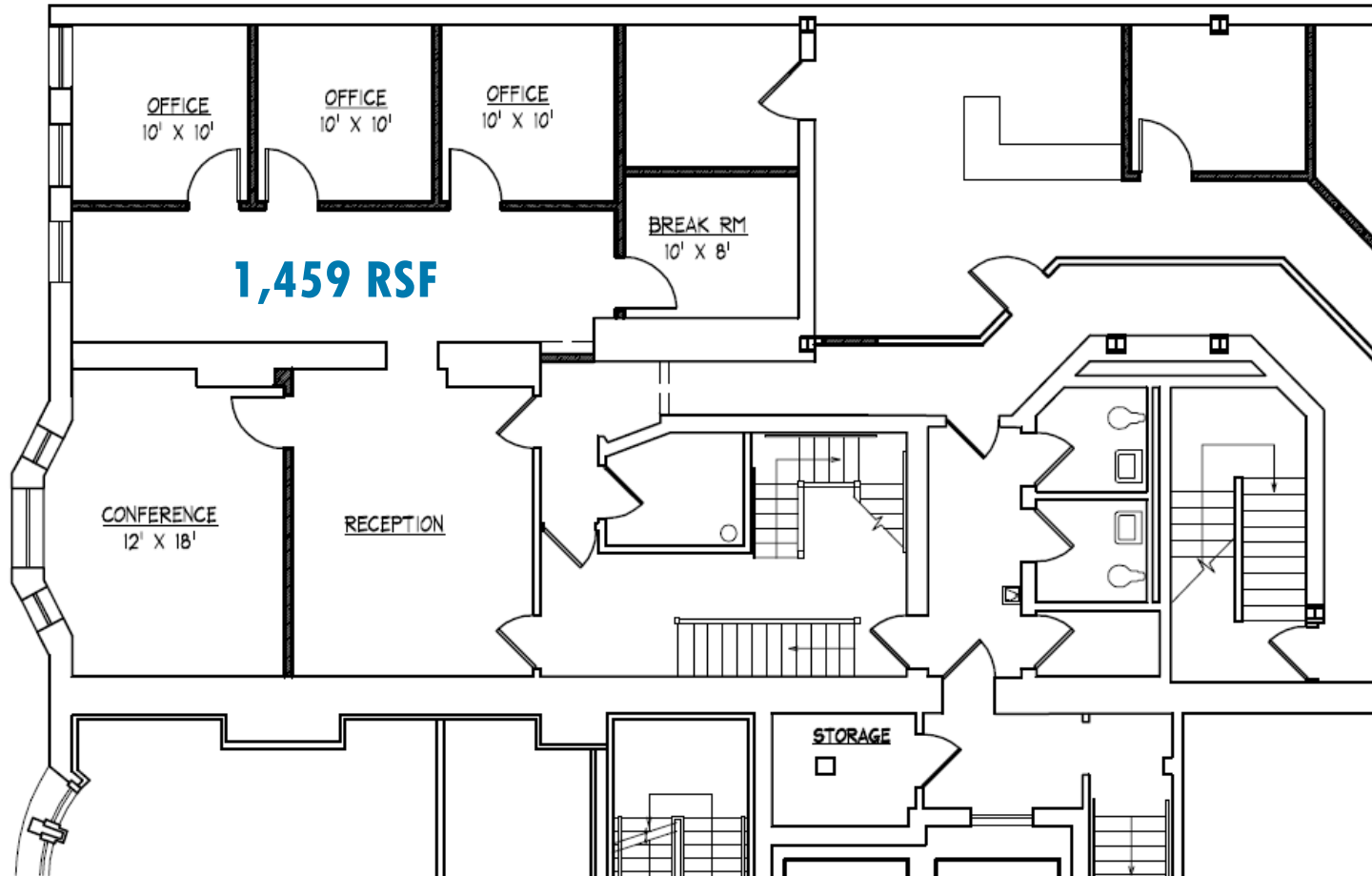


FOR LEASE

Baltimore City, Maryland

3RD FLOOR PLAN

1120 NORTH CHARLES STREET | BALTIMORE, MARYLAND 21201

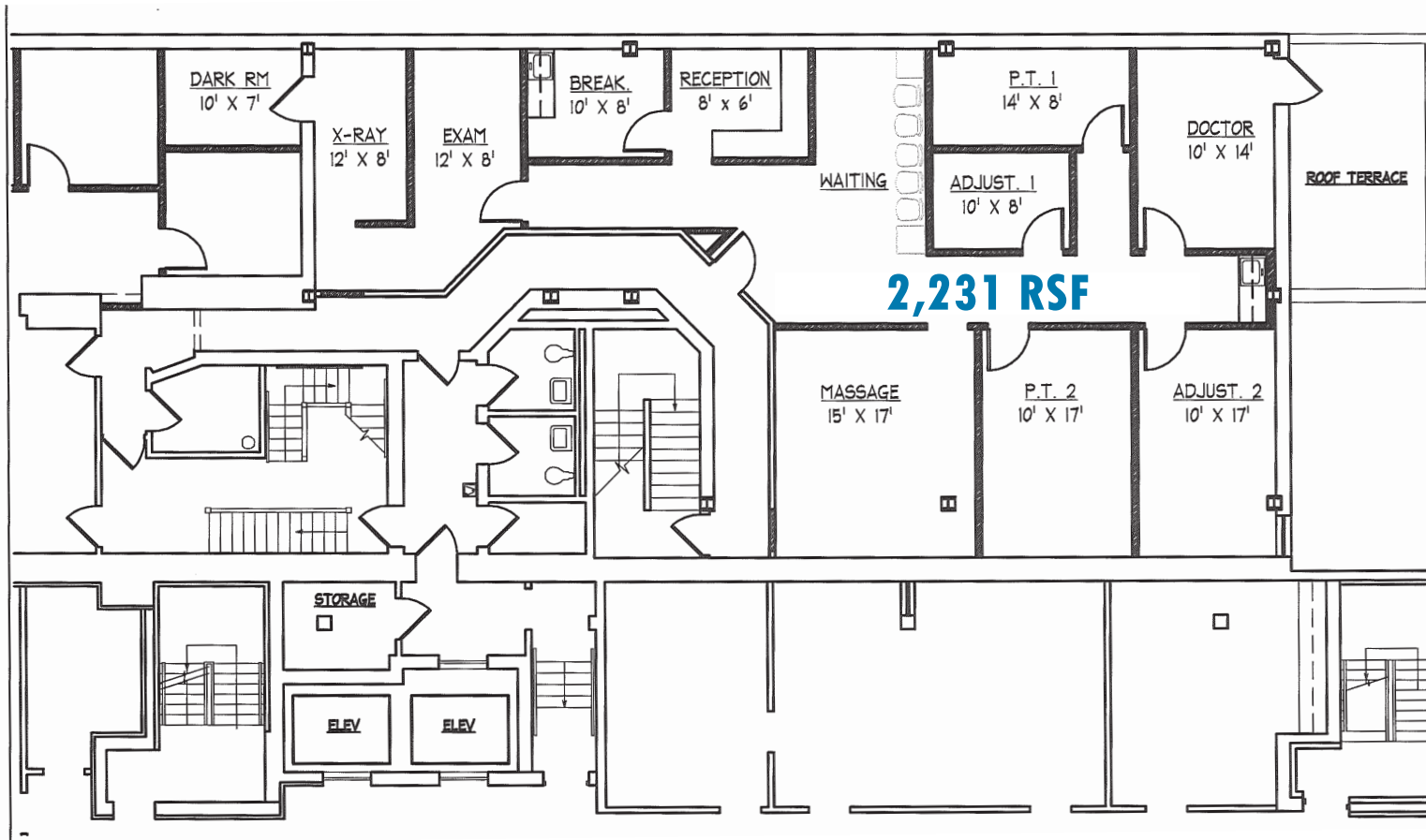


FOR LEASE

Baltimore City, Maryland

3RD FLOOR PLAN

1120 NORTH CHARLES STREET | BALTIMORE, MARYLAND 21201



FOR LEASE

Baltimore City, Maryland

4TH FLOOR PLAN

1120 NORTH CHARLES STREET | BALTIMORE, MARYLAND 21201

