

FOR LEASE

Anne Arundel County, MD

CROWNSVILLE TOWN STATION

1321 GENERALS HIGHWAY | CROWNSVILLE, MARYLAND 21032

AVAILABLE

Suite 101: 1,402 rsf* (7/1/21)

Suite 302: 1,100 rsf (Immediately)

Suite 303: 1,698 rsf (Immediately)

BUILDING SIZE

21,069 sf

ZONING

C2 (Commercial Office District)

PARKING RATIO

5.5/1,000 sf

RENTAL RATE

\$21.00/sf, NNN *Price Reduced!*

HIGHLIGHTS

- ▶ Professional office building with easy access to Baltimore and Annapolis
- ▶ Charming local neighborhood
- ▶ White box and plug 'n' play options
- ▶ Monument signage for tenants
- ▶ Hands-on management

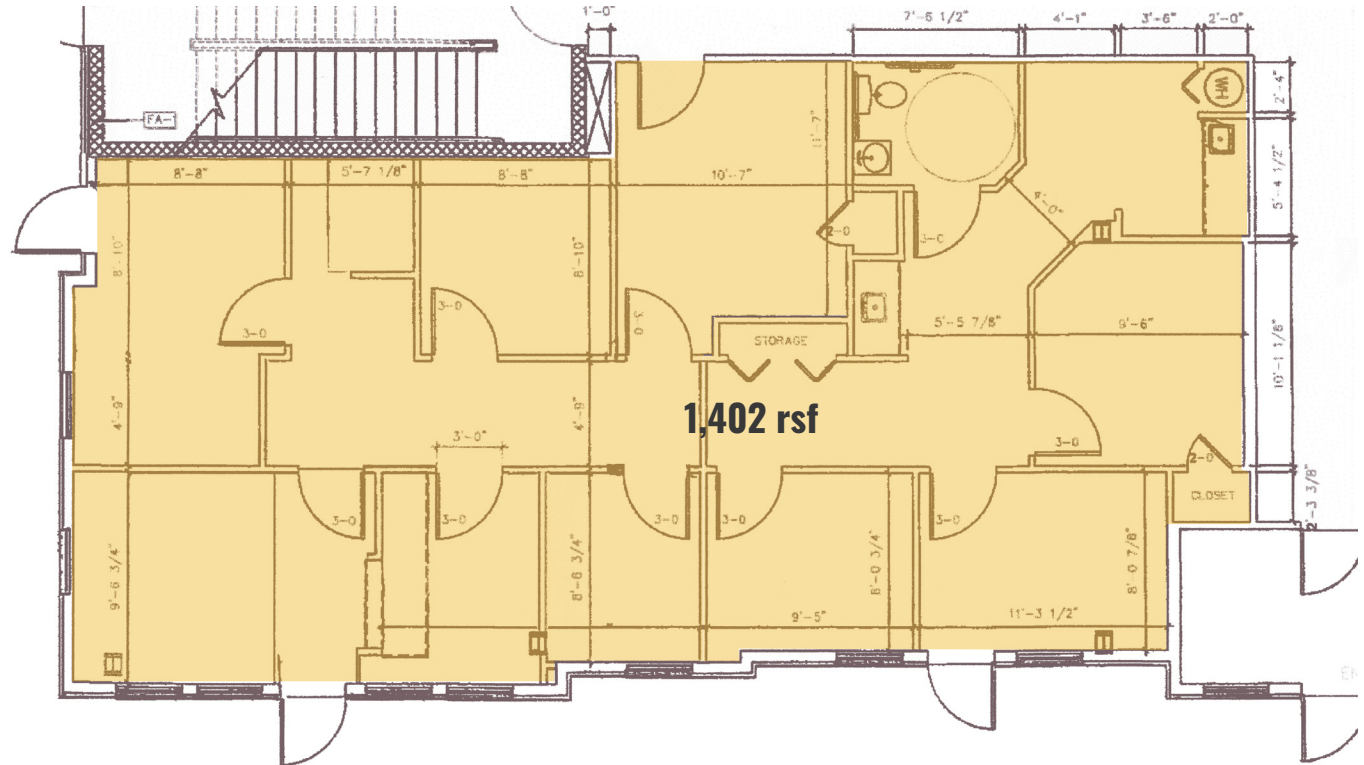


FOR LEASE

Anne Arundel County, MD

SUITE 101

CROWNSVILLE TOWN STATION | 1321 GENERALS HIGHWAY | CROWNSVILLE, MARYLAND 21032

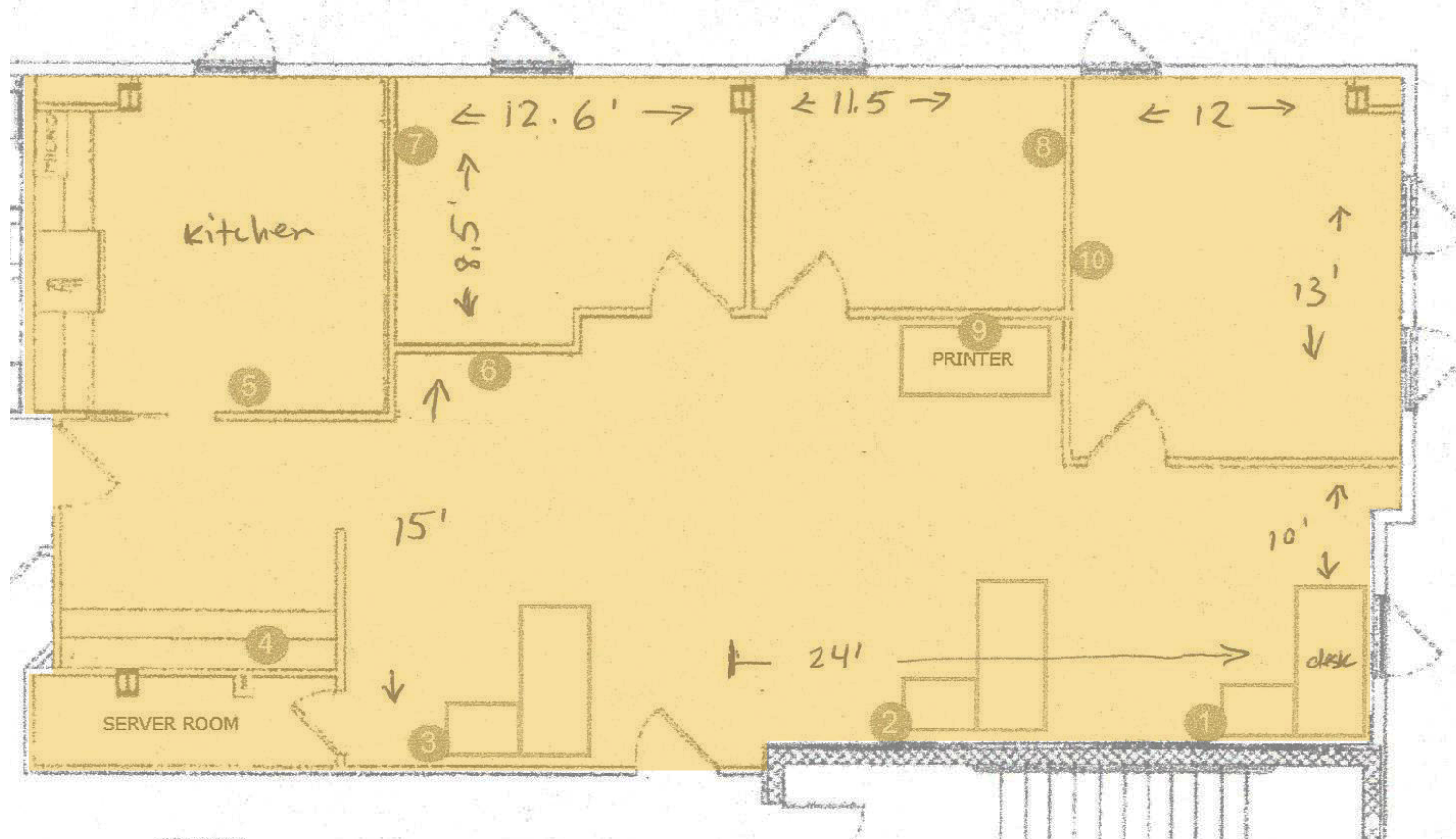


FOR LEASE

Anne Arundel County, MD

SUITE 302: 1,100 RSF

CROWNSVILLE TOWN STATION | 1321 GENERALS HIGHWAY | CROWNSVILLE, MARYLAND 21032

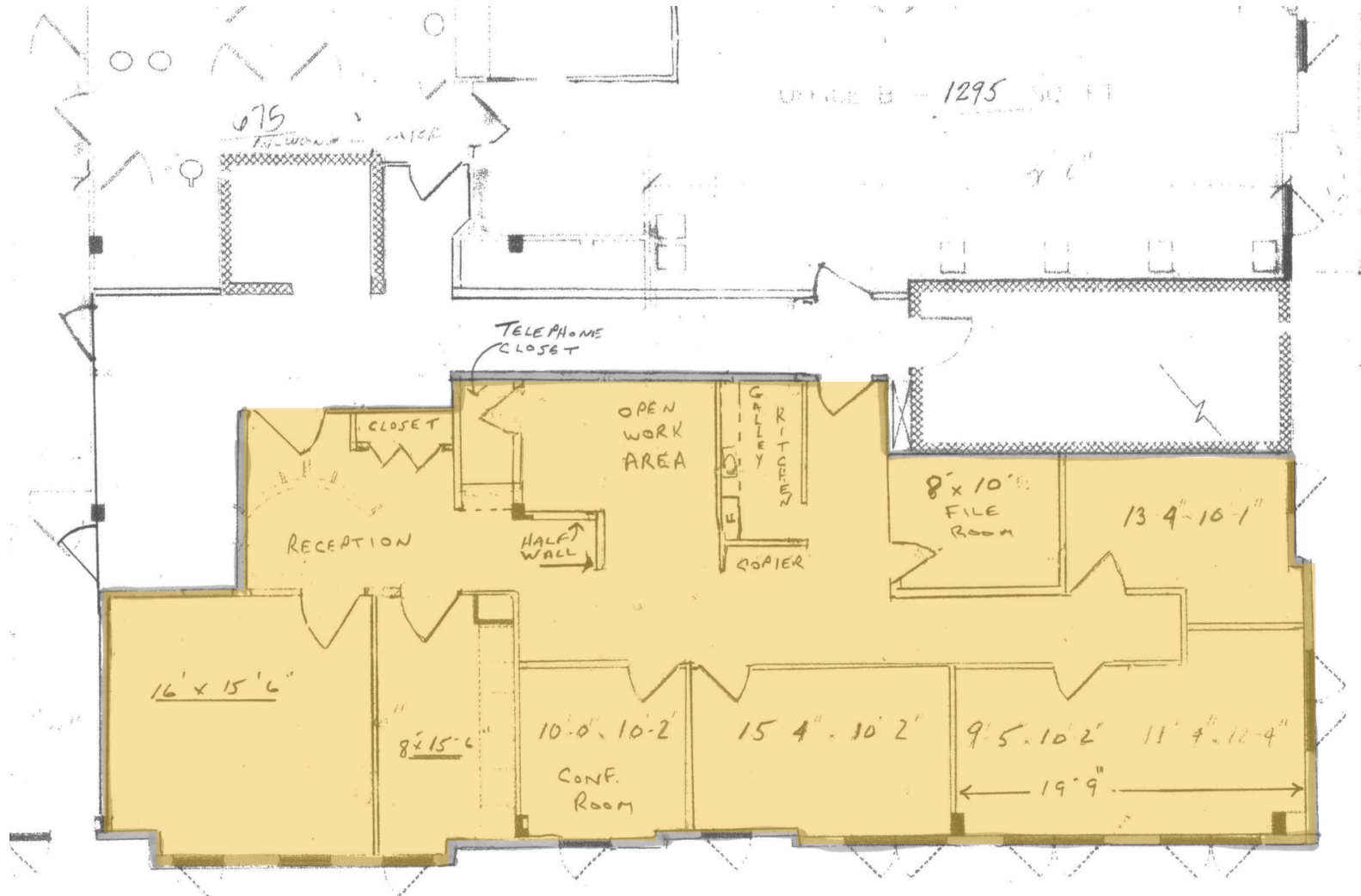


FOR LEASE

Anne Arundel County, MD

SUITE 303: 1,698 RSF

CROWNSVILLE TOWN STATION | 1321 GENERALS HIGHWAY | CROWNSVILLE, MARYLAND 21032











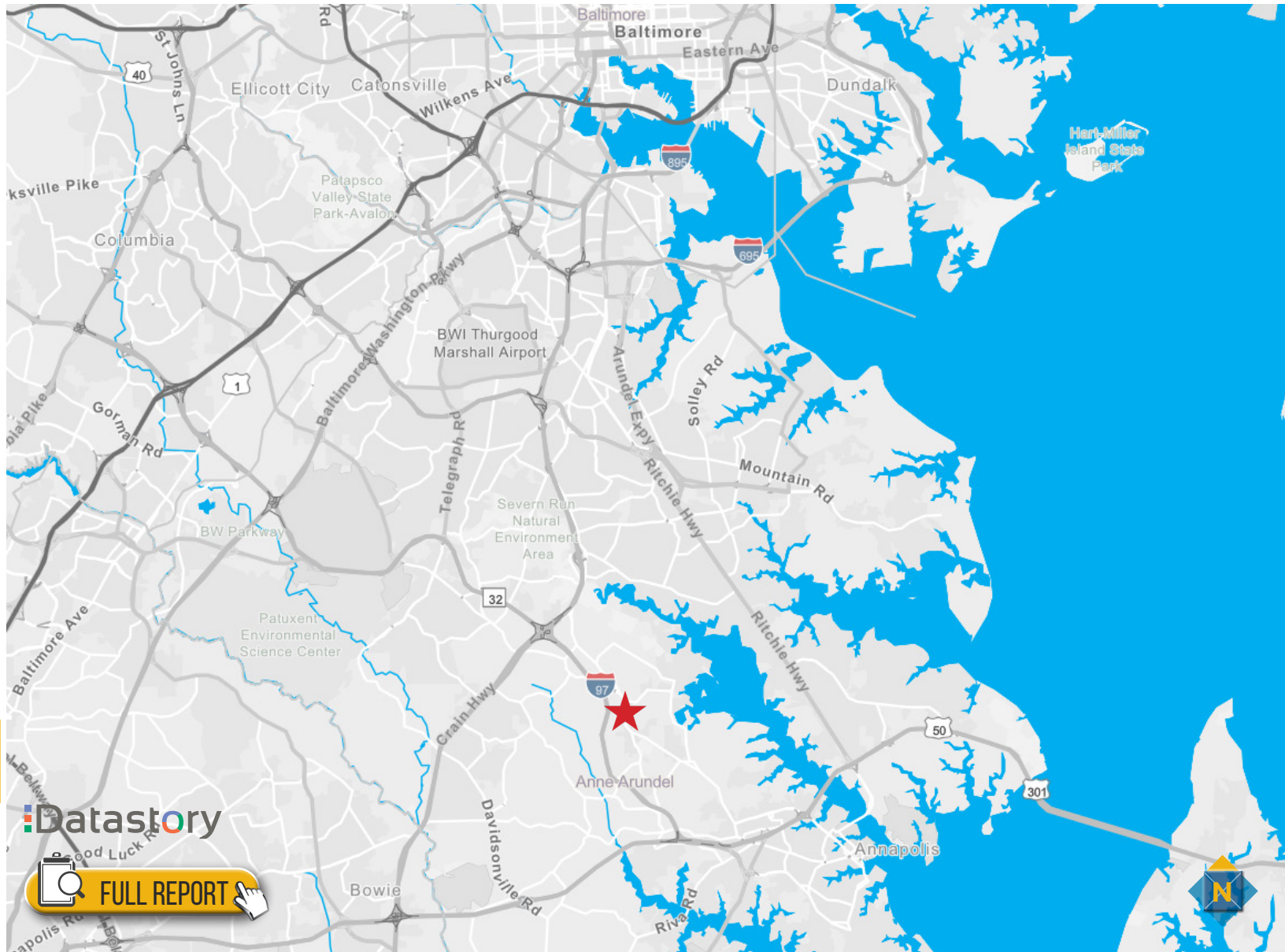
FOR LEASE

Anne Arundel County, MD

LOCATION / DEMOGRAPHICS

CROWNSVILLE TOWN STATION | 1321 GENERALS HIGHWAY | CROWNSVILLE, MARYLAND 21032

AVERAGE HH SIZE 	MEDIAN AGE 
3.60 1 MILE 2.72 3 MILES 2.60 5 MILES	48.9 1 MILE 47.6 3 MILES 44.0 5 MILES
EMPLOYMENT (AGE 16+ IN LABOR FORCE) 	DAYTIME POPULATION 
94.7% 1 MILE 95.8% 3 MILES 96.9% 5 MILES	609 1 MILE 2,848 3 MILES 67,985 5 MILES
RESIDENTIAL POPULATION 	NUMBER OF HOUSEHOLDS 
316 1 MILE 6,288 3 MILES 40,114 5 MILES	173 1 MILE 4,852 3 MILES 32,720 5 MILES
AVERAGE HH INCOME 	EDUCATION (COLLEGE+) 
\$214,711 1 MILE \$174,419 3 MILES \$153,563 5 MILES	76.5% 1 MILE 76.7% 3 MILES 81.8% 5 MILES



Datastory

 FULL REPORT 