

FOR LEASE

 Baltimore City, Maryland

1400 - 1402 SOUTH CHARLES STREET

BALTIMORE, MARYLAND 21230

AVAILABLE FOR LEASE

170 sf - 5,802 sf

1st: 170 sf - 340 sf at \$20.50 psf, FS

3rd: 1,377 sf at \$20.50 psf, FS

Building: 5,801 sf at \$14.50, psf NNN

AVAILABLE

1st: Immediate

2nd: To be determined

3rd: Immediate

BUILDING SIZE

5,802 sf ±

ZONING

R-8 (office, retail, and residential)

HIGHLIGHTS

- ▶ Elevator serves floors 1-3
- ▶ Completely renovated
- ▶ Floors 1-3 currently built-out as offices, in good condition
- ▶ Bathrooms on all floors
- ▶ Shared reception, conference room, and kitchen on the 1st floor
- ▶ Highly visible Southeast corner of S. Charles and N. Clement Streets with excellent signage opportunities



James R. Grieves, Jr. | Vice President

☎ 443.573.3202 ✉ jgrieves@mackenziecommercial.com

Mackenzie Commercial Real Estate Services, LLC • 443-573-3200 • 111 S. Calvert Street, Suite 2800 | Baltimore, Maryland 21202 • www.MACKENZIECOMMERCIAL.com

Terri Harrington | Senior Vice President

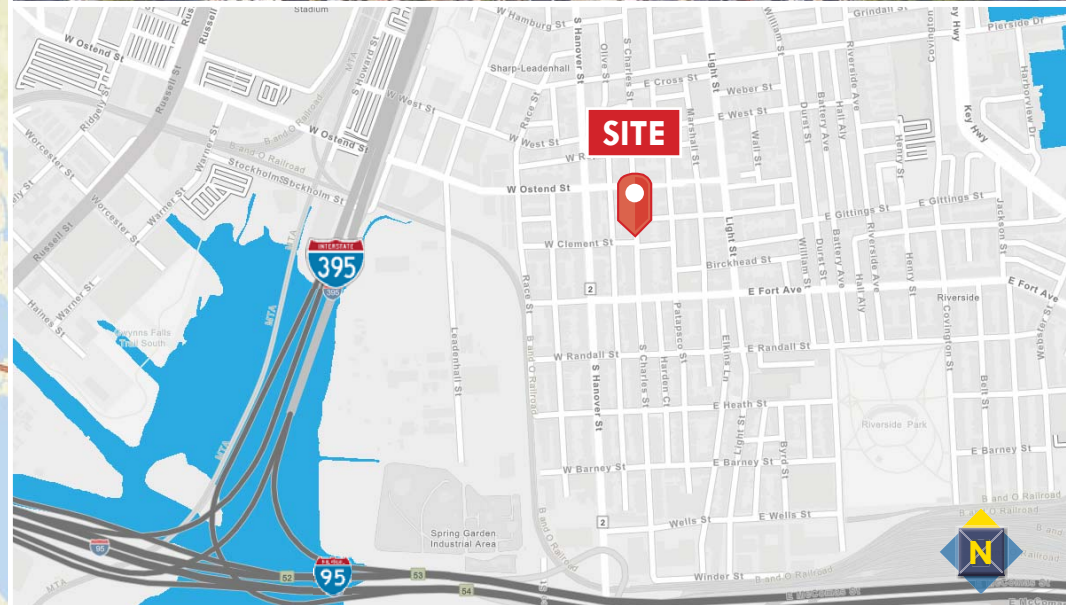
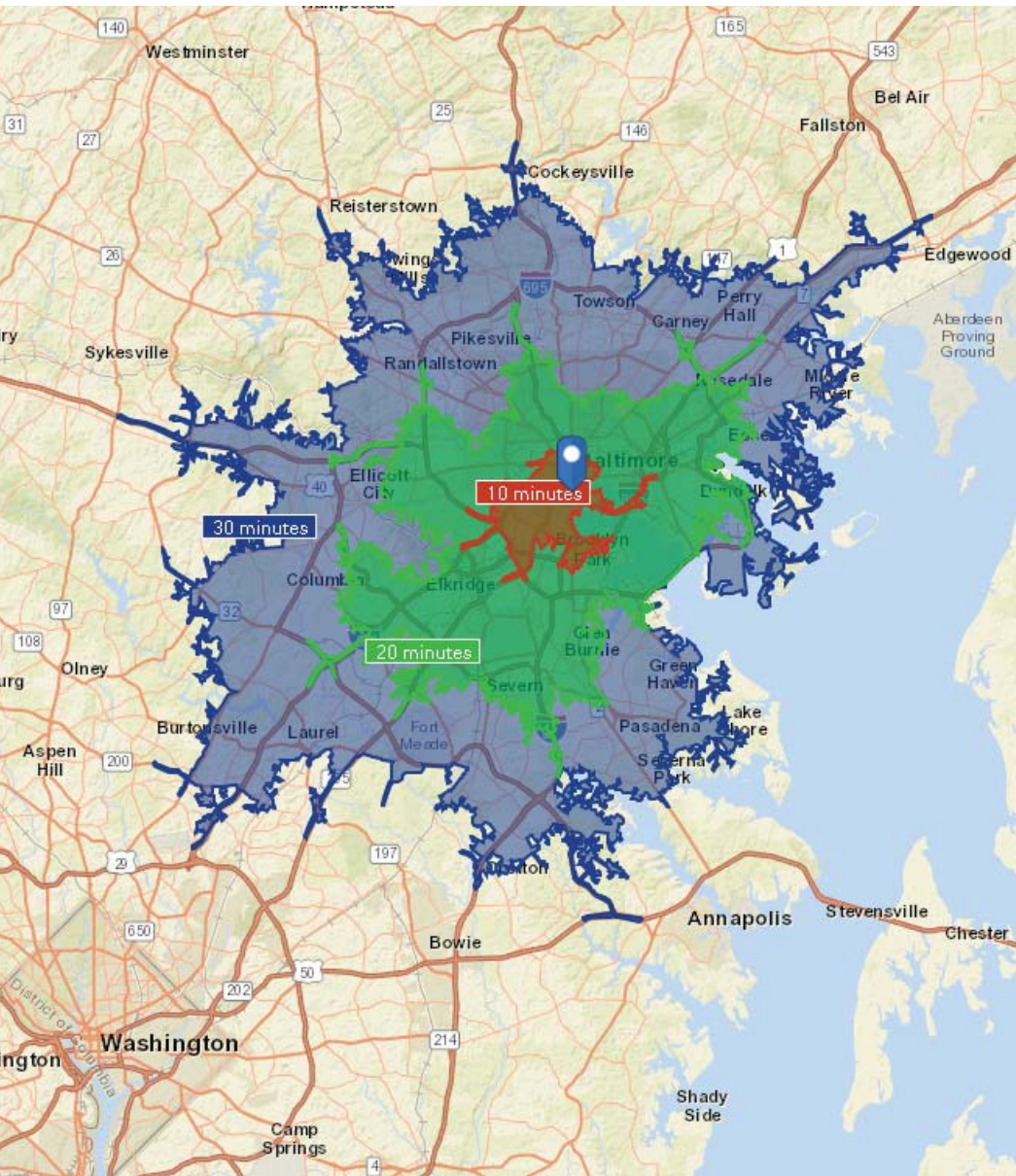
☎ 443.573.3213 ✉ tharrington@mackenziecommercial.com

FOR LEASE

Baltimore City, Maryland

LOCATION

1400 - 1402 SOUTH CHARLES STREET | BALTIMORE, MARYLAND 21230

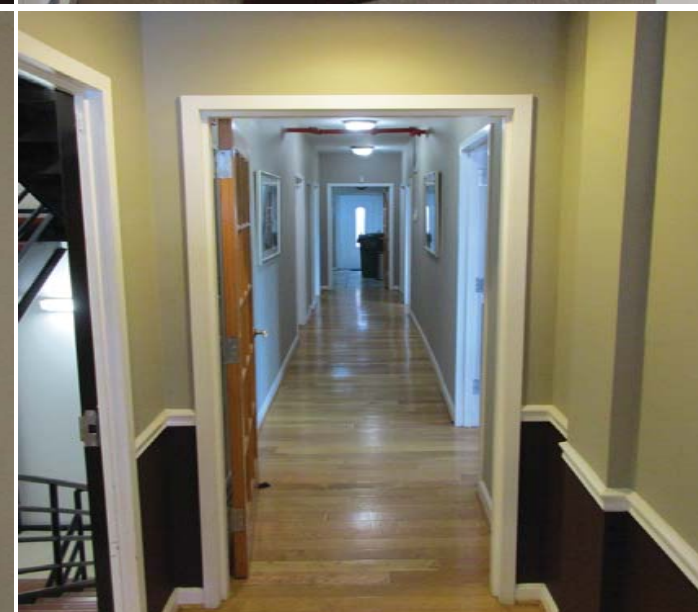


FOR LEASE

Baltimore City, Maryland

1ST FLOOR PHOTOS

1400 - 1402 SOUTH CHARLES STREET | BALTIMORE, MARYLAND 21230

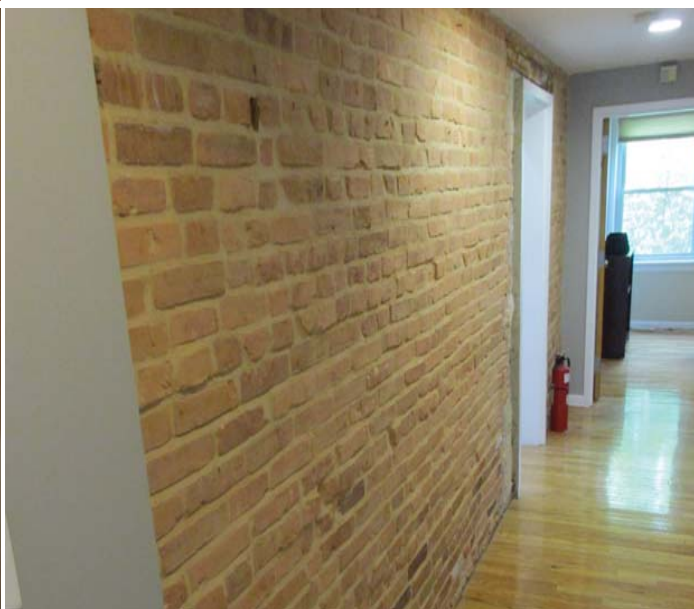
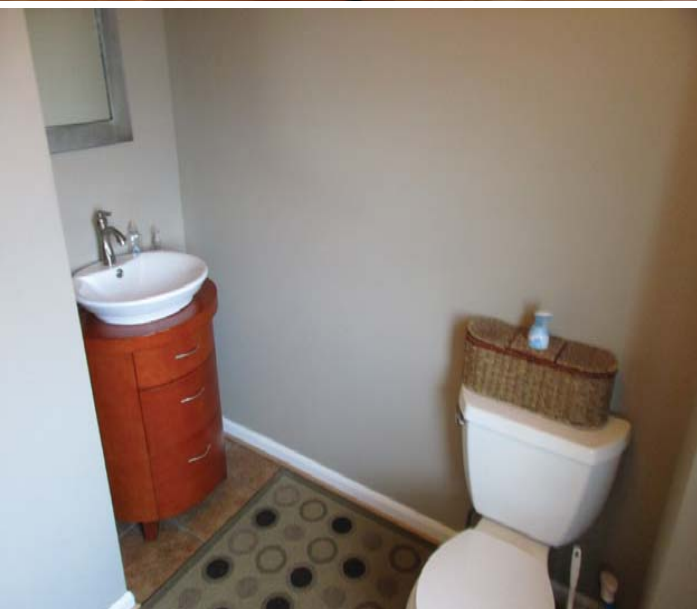
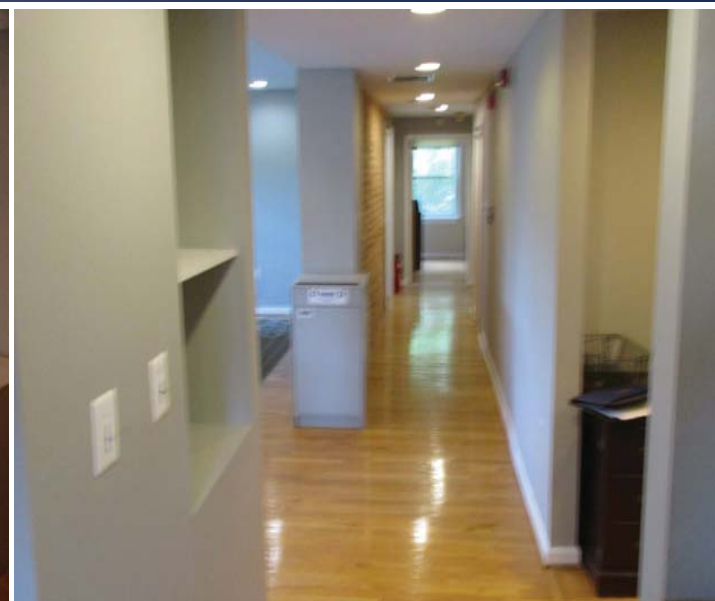


FOR LEASE

Baltimore City, Maryland

3RD FLOOR PHOTOS

1400 - 1402 SOUTH CHARLES STREET | BALTIMORE, MARYLAND 21230

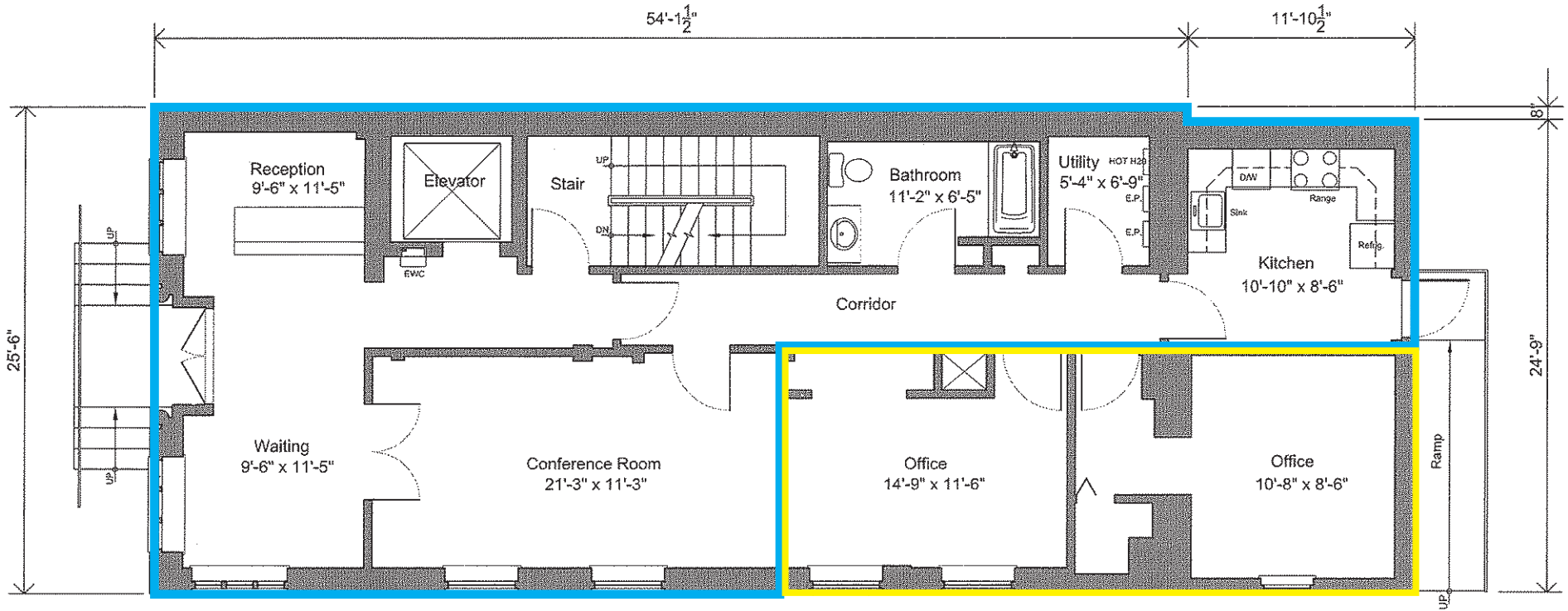


FOR LEASE

Baltimore City, Maryland

1ST FLOOR PLAN

1400 - 1402 SOUTH CHARLES STREET | BALTIMORE, MARYLAND 21230



 Available: Multi-tenant

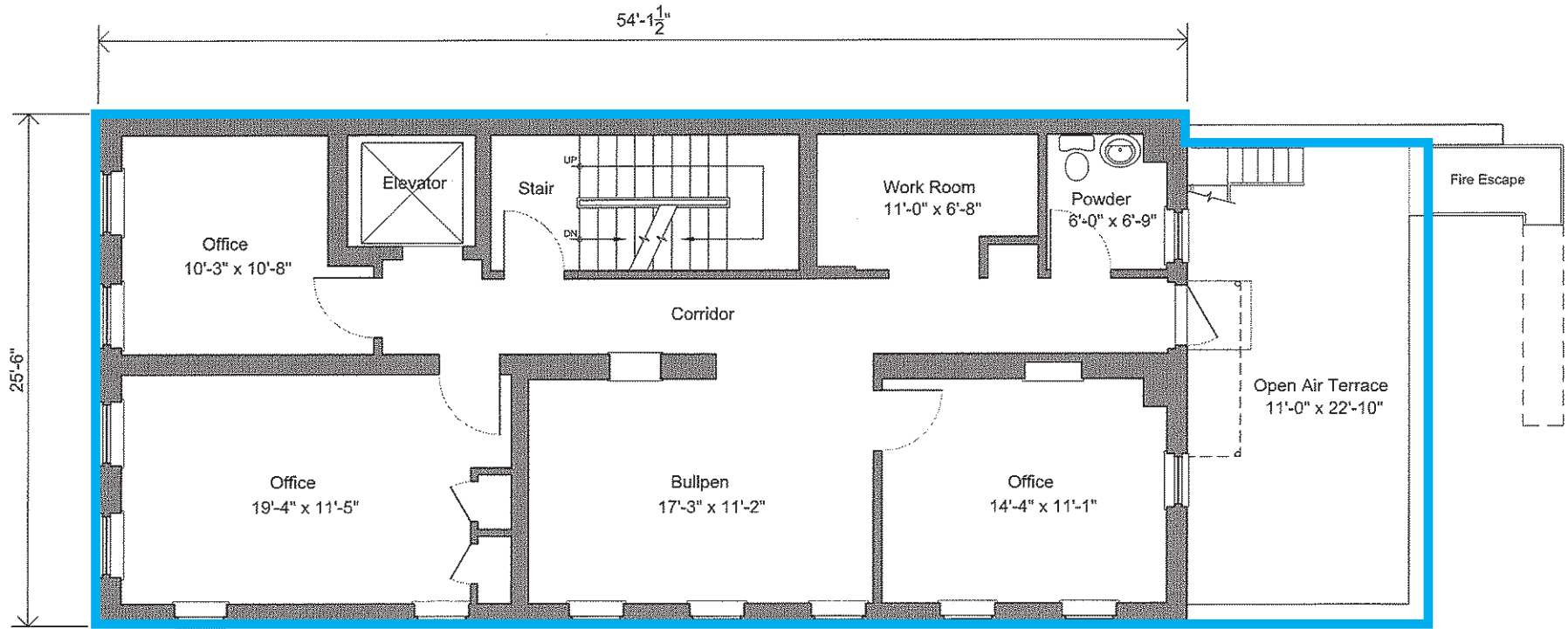
 Shared Space: Multi-tenant

FOR LEASE

Baltimore City, Maryland

2ND FLOOR PLAN

1400 - 1402 SOUTH CHARLES STREET | BALTIMORE, MARYLAND 21230



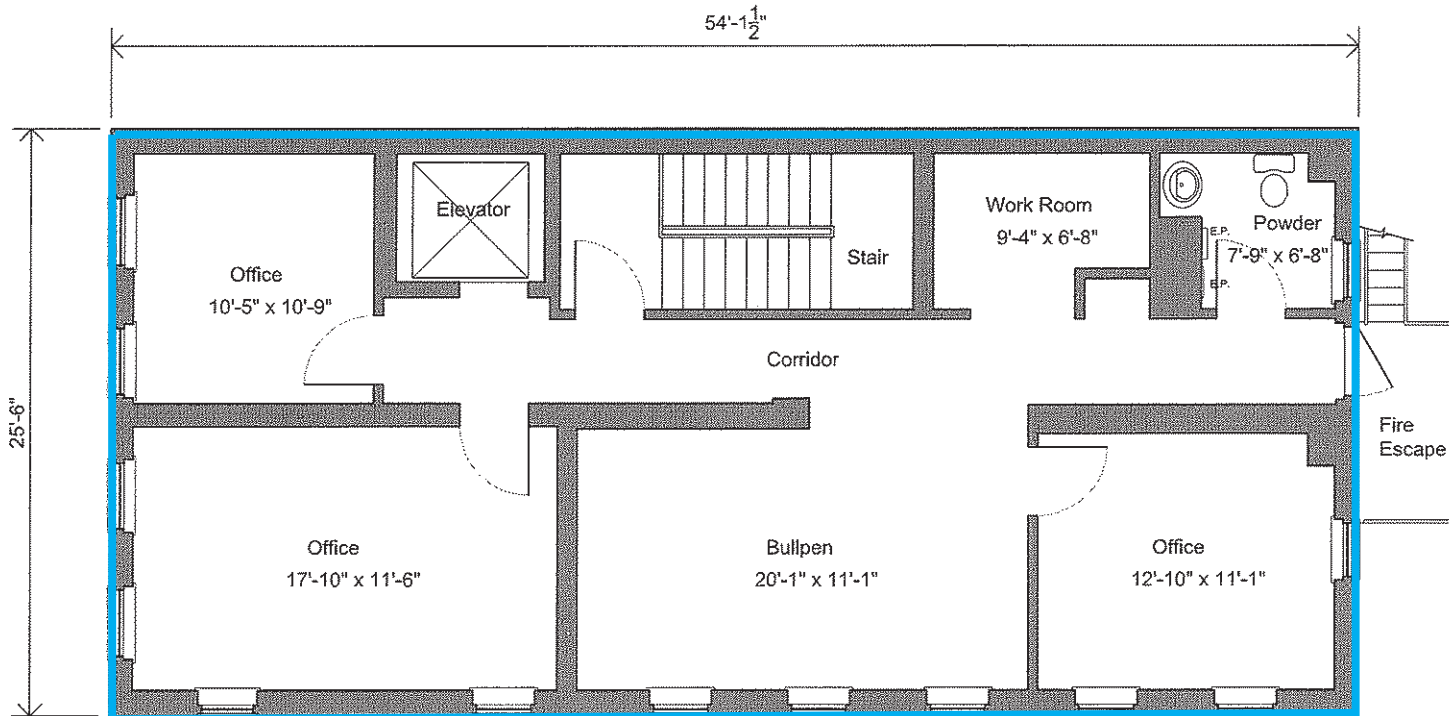
Available: Building Tenant

FOR LEASE

Baltimore City, Maryland

3RD FLOOR PLAN

1400 - 1402 SOUTH CHARLES STREET | BALTIMORE, MARYLAND 21230



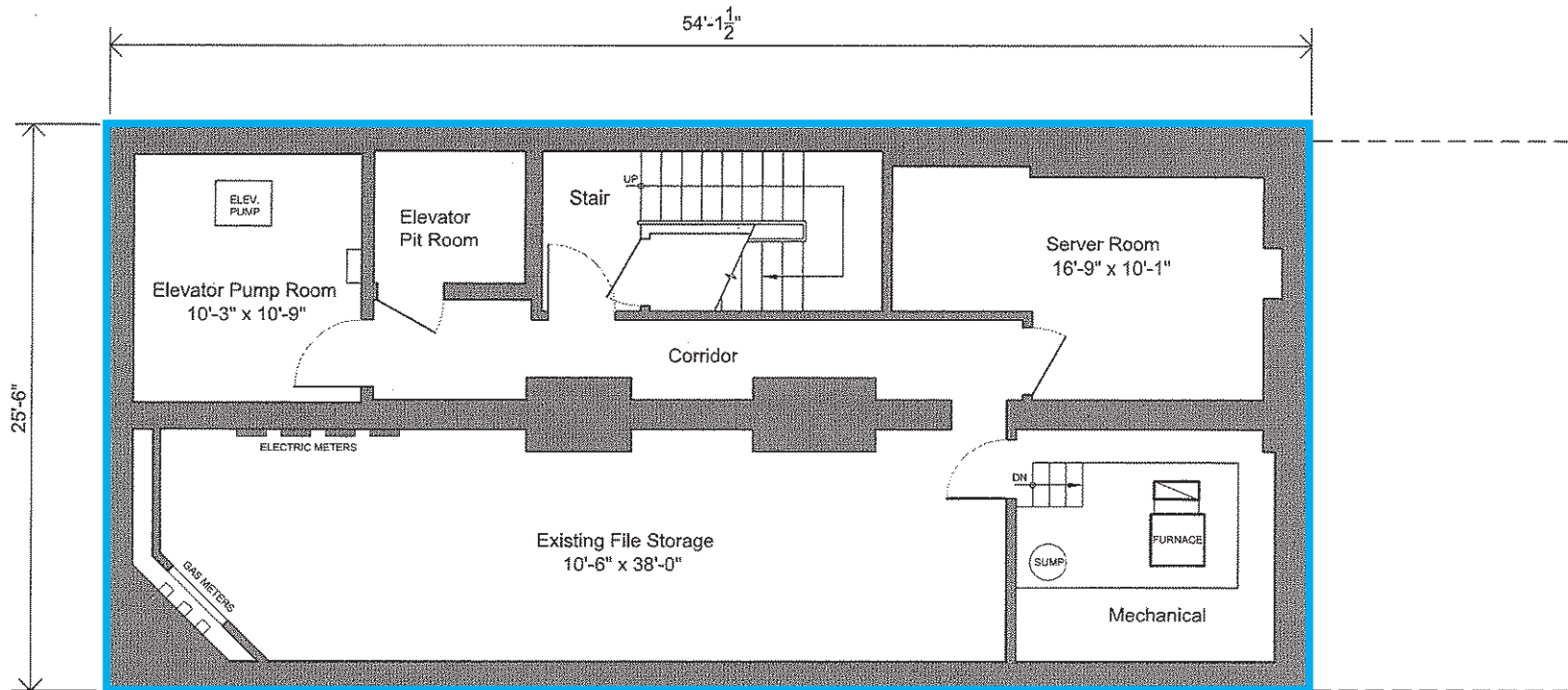
Available: Multi-Tenant

FOR LEASE

Baltimore City, Maryland

BASEMENT FLOOR PLAN

1400 - 1402 SOUTH CHARLES STREET | BALTIMORE, MARYLAND 21230



Available: Building Tenant