

SALE/LEASE

 Baltimore County, MD

INDUSTRIAL BUILDING

1807 WHITEHEAD ROAD | WOODLAWN, MARYLAND, 21207

AVAILABLE

50,652 sf ±

LOT SIZE

1.99 Acres ±

ZONING

BM-IM

CEILING HEIGHT

18'-22' ±

HIGHLIGHTS

- ▶ Located in an established business park with access to I-695 and I-95
- ▶ 7 loading docks
- ▶ Heavy power
- ▶ Wet sprinkler
- ▶ Gas Heat
- ▶ Ample on-site surface parking



STREET VIEW

Michael Spedden

☎ 410.494.6644

✉ mstedden@mackenziecommercial.com

Daniel Hudak, SIOR

☎ 443.573.3205

✉ dhudak@mackenziecommercial.com

Andrew Meeder

☎ 410.494.4881

✉ ameeder@mackenziecommercial.com

SALE/LEASE

 Baltimore County, MD

BIRDSEYE

1807 WHITEHEAD ROAD | WOODLAWN, MARYLAND, 21207



Michael Spedden

📞 410.494.6644

✉️ mspedden@mackenziecommercial.com

MacKenzie Commercial Real Estate Services, LLC • 443-573-3200 • 111 S. Calvert Street, Suite 2800 | Baltimore, Maryland 21202 • www.MACKENZIECOMMERCIAL.com

Daniel Hudak, SIOR

📞 443.573.3205

✉️ dhudak@mackenziecommercial.com

Andrew Meeder

📞 410.494.4881

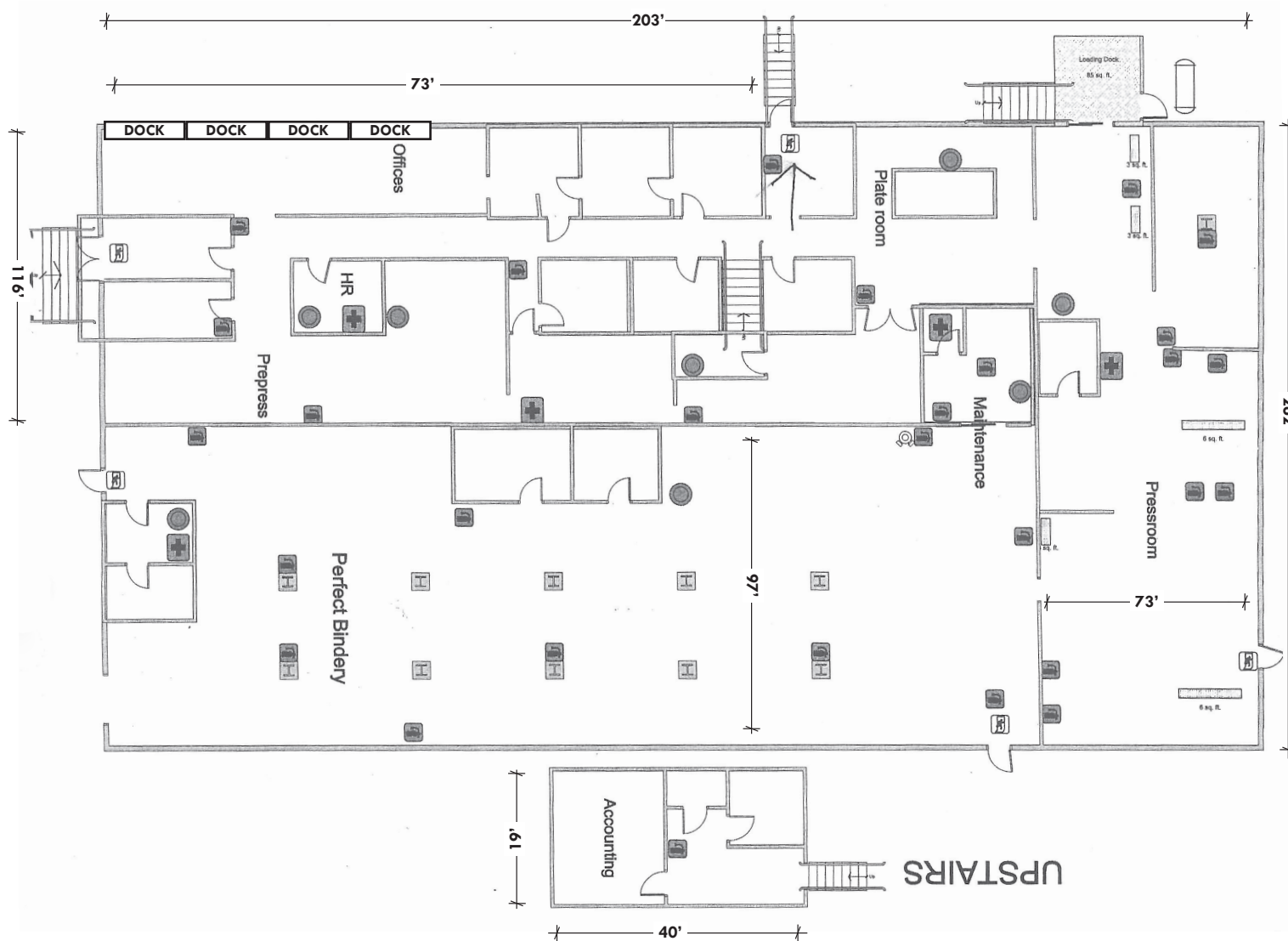
✉️ ameeder@mackenziecommercial.com

SALE/LEASE

Baltimore County, MD

FLOOR PLAN

1807 WHITEHEAD ROAD | WOODLAWN, MARYLAND, 21207



SALE/LEASE



Baltimore County, MD

LOCATION

1807 WHITEHEAD ROAD | WOODLAWN, MARYLAND, 21207



MACKENZIE

COMMERCIAL REAL ESTATE SERVICES, LLC

Michael Spedden

410.494.6644

mspedden@mackenziecommercial.com

Daniel Hudak, SIOR

443.573.3205

dhudak@mackenziecommercial.com

Andrew Meeder

410.494.4881

ameeder@mackenziecommercial.com

Mackenzie Commercial Real Estate Services, LLC • 443-573-3200 • 111 S. Calvert Street, Suite 2800 | Baltimore, Maryland 21202 • www.MACKENZIECOMMERCIAL.com

No warranty or representation, expressed or implied, is made as to the accuracy of the information contained herein, and same is submitted subject to errors, omissions, change of price, rental or other conditions, withdrawal without notice, and to any specific listing conditions imposed by our principals.