

SALE/LEASE

 Baltimore County, MD

INDUSTRIAL BUILDING

1815 WHITEHEAD ROAD | WOODLAWN, MARYLAND 21207

AVAILABLE

35,182 sf ±

LOT SIZE

2 parcels containing a total of 1.3 acres ±

ZONING

BM-IM

CEILING HEIGHT

14' ±

HIGHLIGHTS

- ▶ Located in an established business park with access to I-695 and I-95
- ▶ 2 loading docks
- ▶ Gas Heat
- ▶ Heavy power
- ▶ Wet sprinkler



Andrew Meeder

☎ 410.494.4881

✉ ameeder@mackenziecommercial.com

Daniel Hudak, SIOR

☎ 443.573.3205

✉ dhudak@mackenziecommercial.com

Michael Spedden

☎ 410.494.6644

✉ mstedden@mackenziecommercial.com

SALE/LEASE

Baltimore County, MD

BIRDSEYE

1815 WHITEHEAD ROAD | WOODLAWN, MARYLAND 21207

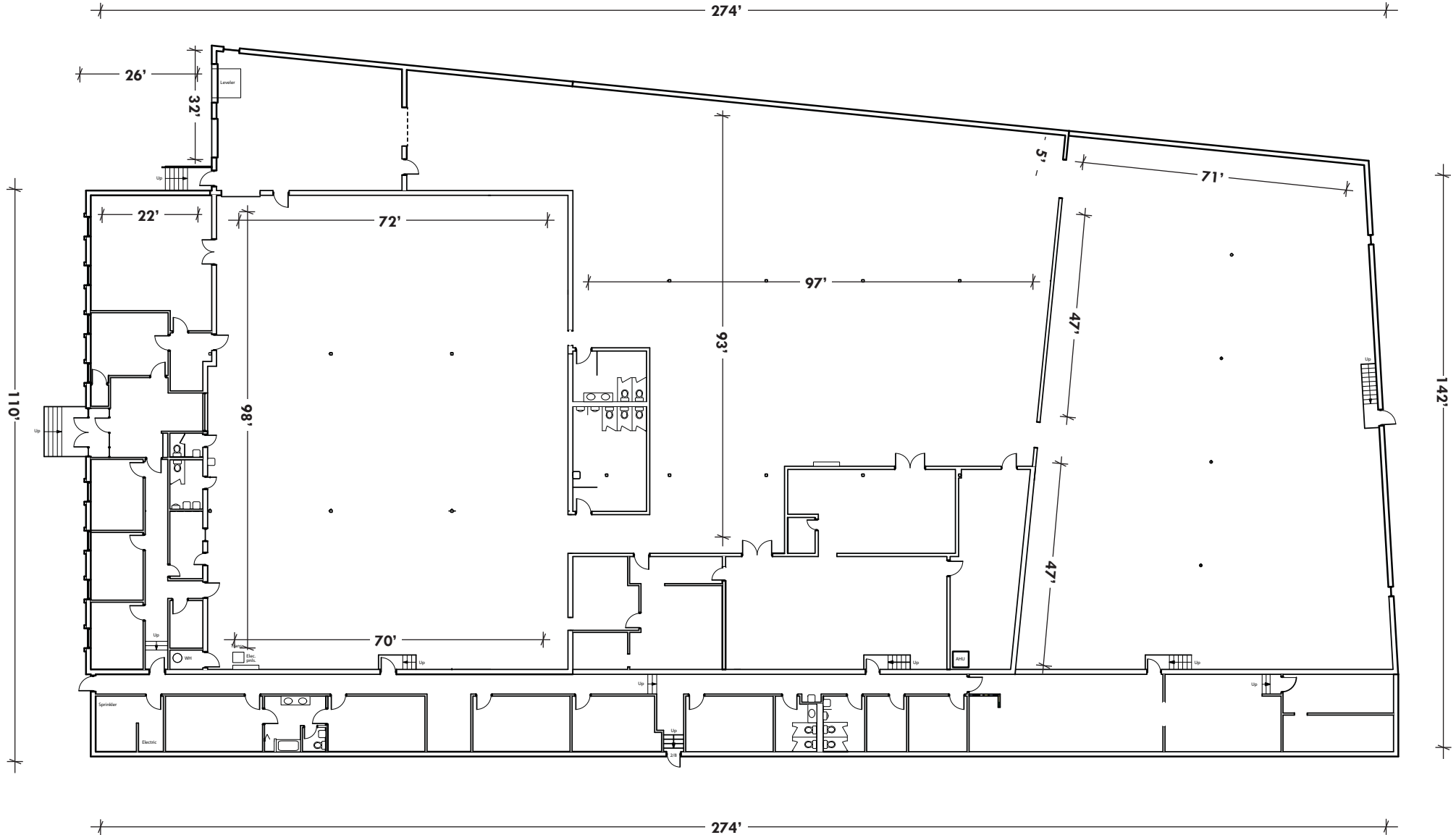


SALE/LEASE

Baltimore County, MD

FLOOR PLAN

1815 WHITEHEAD ROAD | WOODLAWN, MARYLAND 21207



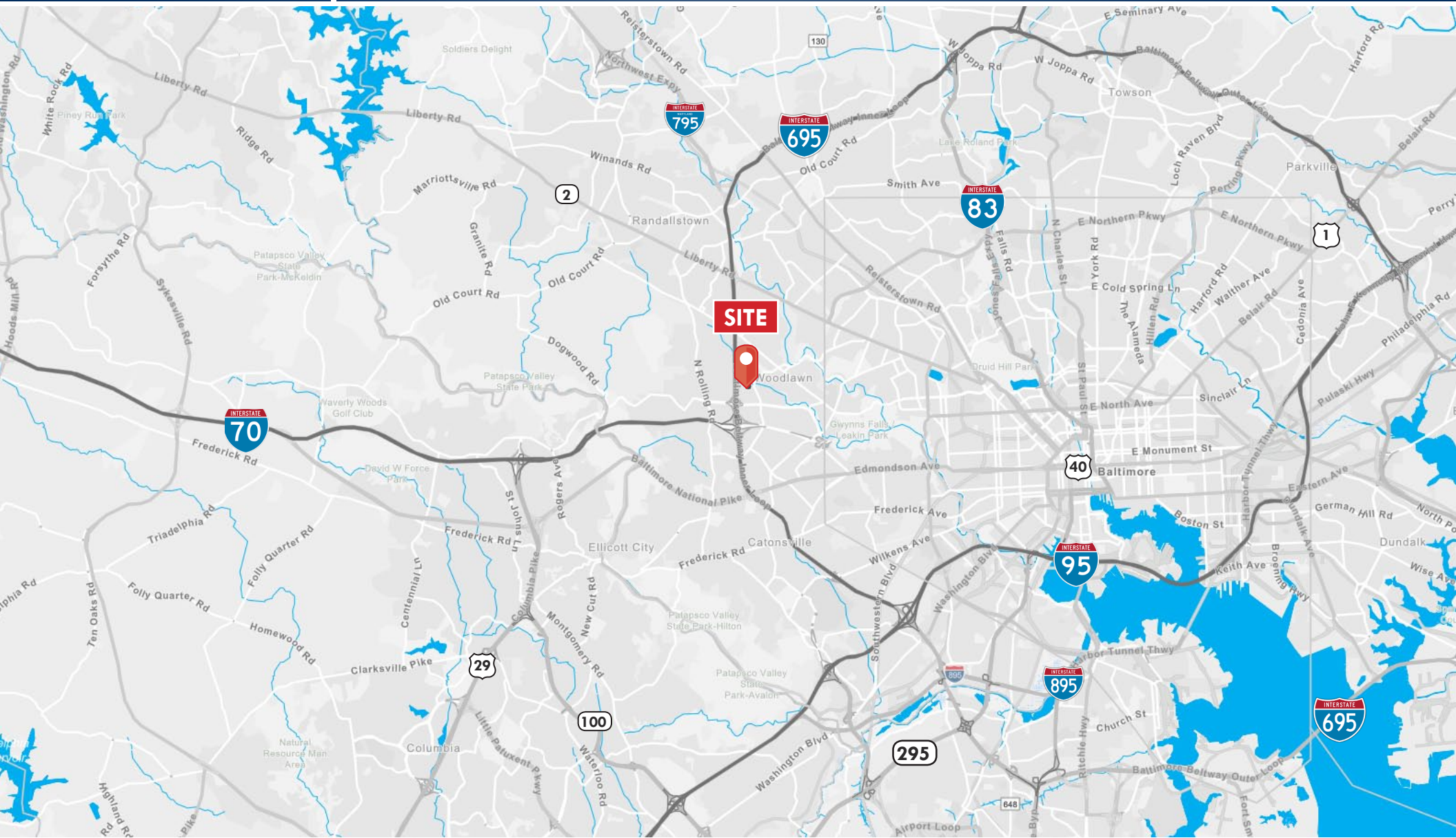
SALE/LEASE



Baltimore County, MD

LOCATION

1815 WHITEHEAD ROAD | WOODLAWN, MARYLAND 21207



Andrew Meeder

📞 410.494.4881

✉️ ameeder@mackenziecommercial.com

Daniel Hudak, SIOR

📞 443.573.3205

✉️ dhudak@mackenziecommercial.com

Michael Spedden

📞 410.494.6644

✉️ mspedden@mackenziecommercial.com



MACKENZIE

COMMERCIAL REAL ESTATE SERVICES, LLC

No warranty or representation, expressed or implied, is made as to the accuracy of the information contained herein, and same is submitted subject to errors, omissions, change of price, rental or other conditions, withdrawal without notice, and to any specific listing conditions imposed by our principals.