

FOR LEASE

 Howard County, MD

NORTH RIDGE PROFESSIONAL BUILDING

2850 NORTH RIDGE ROAD | ELLICOTT CITY, MARYLAND 21043

AVAILABLE

Turn-key Dental Suite - 1,141 sf

ZONING

POR

AVAILABILITY

Immediate

PARKING RATIO

4.75/1,000 sf, FREE

RENTAL RATE

\$25.00 psf

HIGHLIGHTS

- ▶ Easy access off Rt. 40, Rt. 29 and I-70
- ▶ Excellent access to rooftop
- ▶ Route 40 amenities
- ▶ Recently renovated
- ▶ Other tenants include St. Agnes Medical Group, Ellicott City Ambulatory, Morrison Chiropractic, Lancaster Pediatrics, Infectious Disease Associates

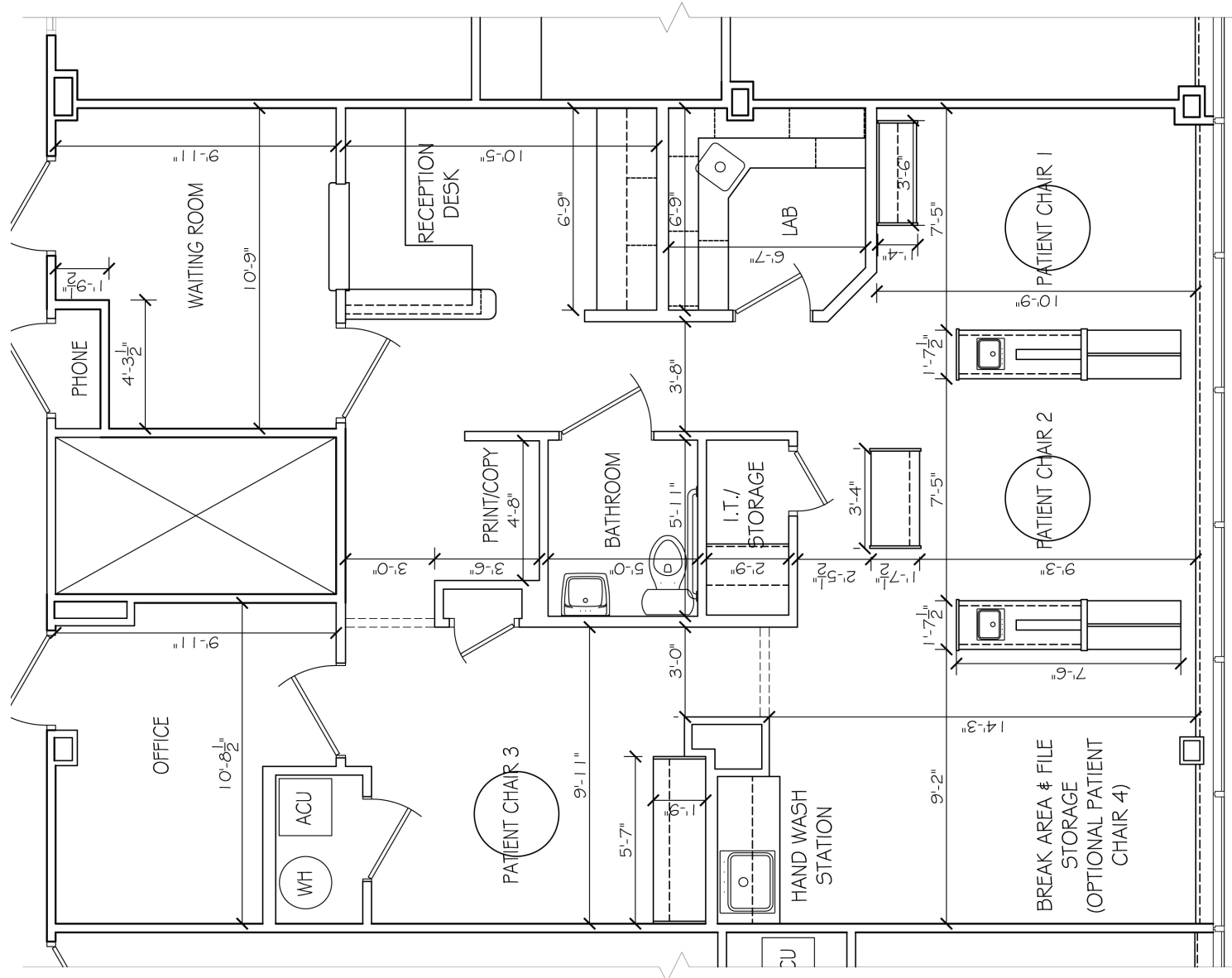


FOR LEASE

Howard County, MD

FLOOR PLAN

NORTH RIDGE PROFESSIONAL BUILDING | ELLICOTT CITY | MARYLAND 21043



FOR LEASE

Howard County, MD

LOCATION

NORTH RIDGE PROFESSIONAL BUILDING | 2850 NORTH RIDGE ROAD | ELLICOTT CITY, MARYLAND 21043

