

FOR LEASE

Baltimore County, MD

6 PARK CENTER COURT

OWINGS MILLS, MARYLAND, 21117

AVAILABLE

Suite 201: 1,418 sf

RENTAL RATE

\$17.50/sf, MG

TERM

3 - 5 years

PARKING RATIO

4.1 : 1,000 sf

HIGHLIGHTS

- ▶ Individually controlled heating and cooling within each suite
- ▶ Excellent Reisterstown Road visibility
- ▶ Well-designed flexible suite layout
- ▶ Easily accessible from I-695 and I-795
- ▶ Short drive to many local amenities including Foundry Row



Meghan Roy

410.494.4846

mroy@mackenziecommercial.com

Matt Mueller

410.494.6658

mmueller@mackenziecommercial.com

Henson Ford

410.494.6657

hford@mackenziecommercial.com

Joe Bradley

410.494.4862

jbradley@mackenziecommercial.com

Bill Whitty

410.494.4800

bwhitty@mackenziecommercial.com

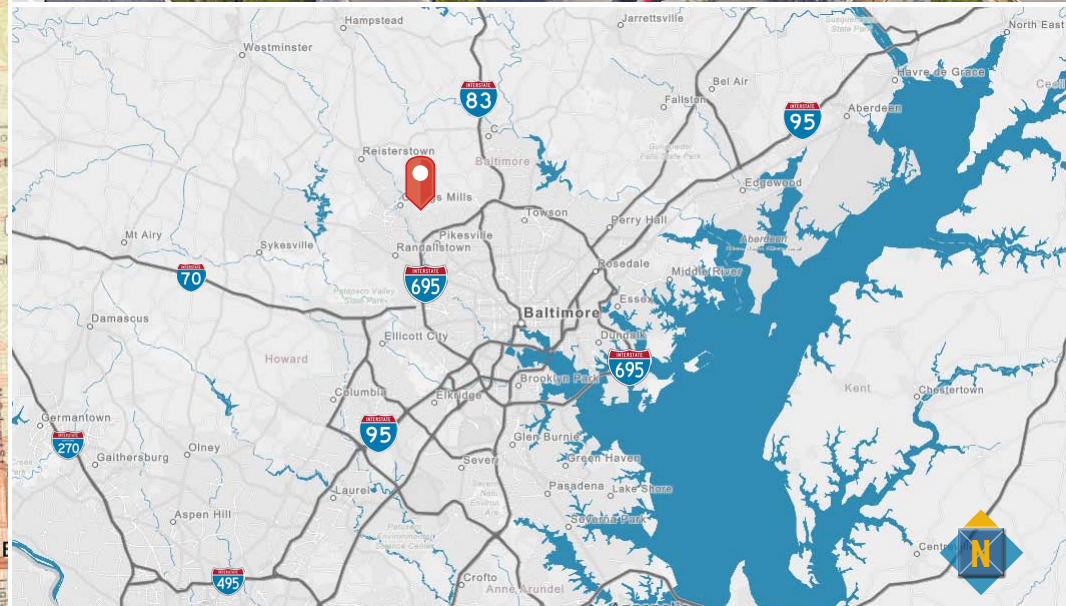
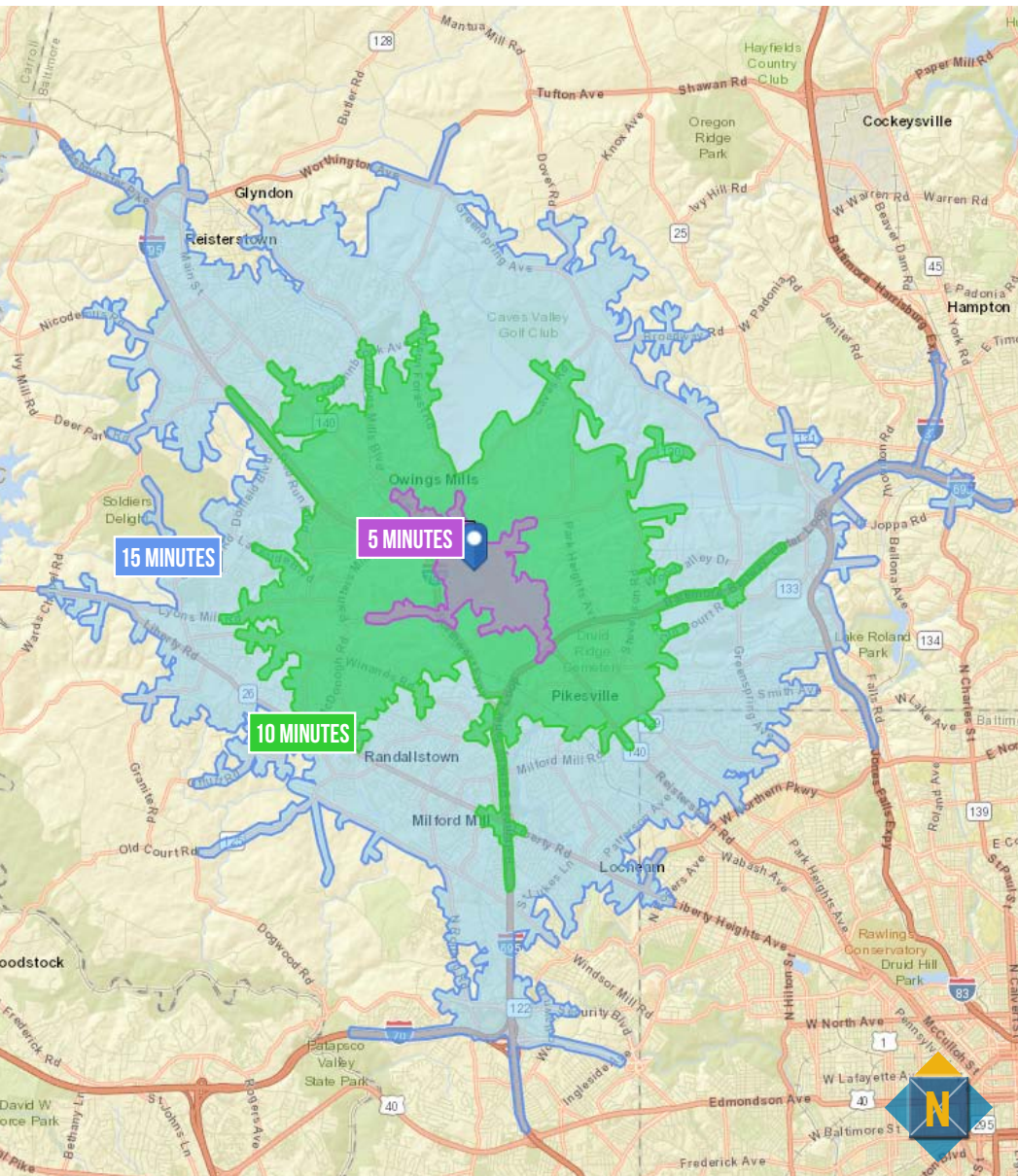
Mackenzie Commercial Real Estate Services, LLC • 410-821-8585 • 2328 W. Joppa Road, Suite 200 | Lutherville-Timonium, Maryland 21093 • www.MACKENZIECOMMERCIAL.com

FOR LEASE

Baltimore County, MD

DRIVETIME/LOCATION/BIRDSEYE

6 PARK CENTER COURT | OWINGS MILLS, MARYLAND, 21117



Meghan Roy

410.494.4846

mroy@mackenziecommercial.com

Matt Mueller

410.494.6658

mmueller@mackenziecommercial.com

Henson Ford

410.494.6657

hford@mackenziecommercial.com

Joe Bradley

410.494.4862

jbradley@mackenziecommercial.com

Bill Whitty

410.494.4800

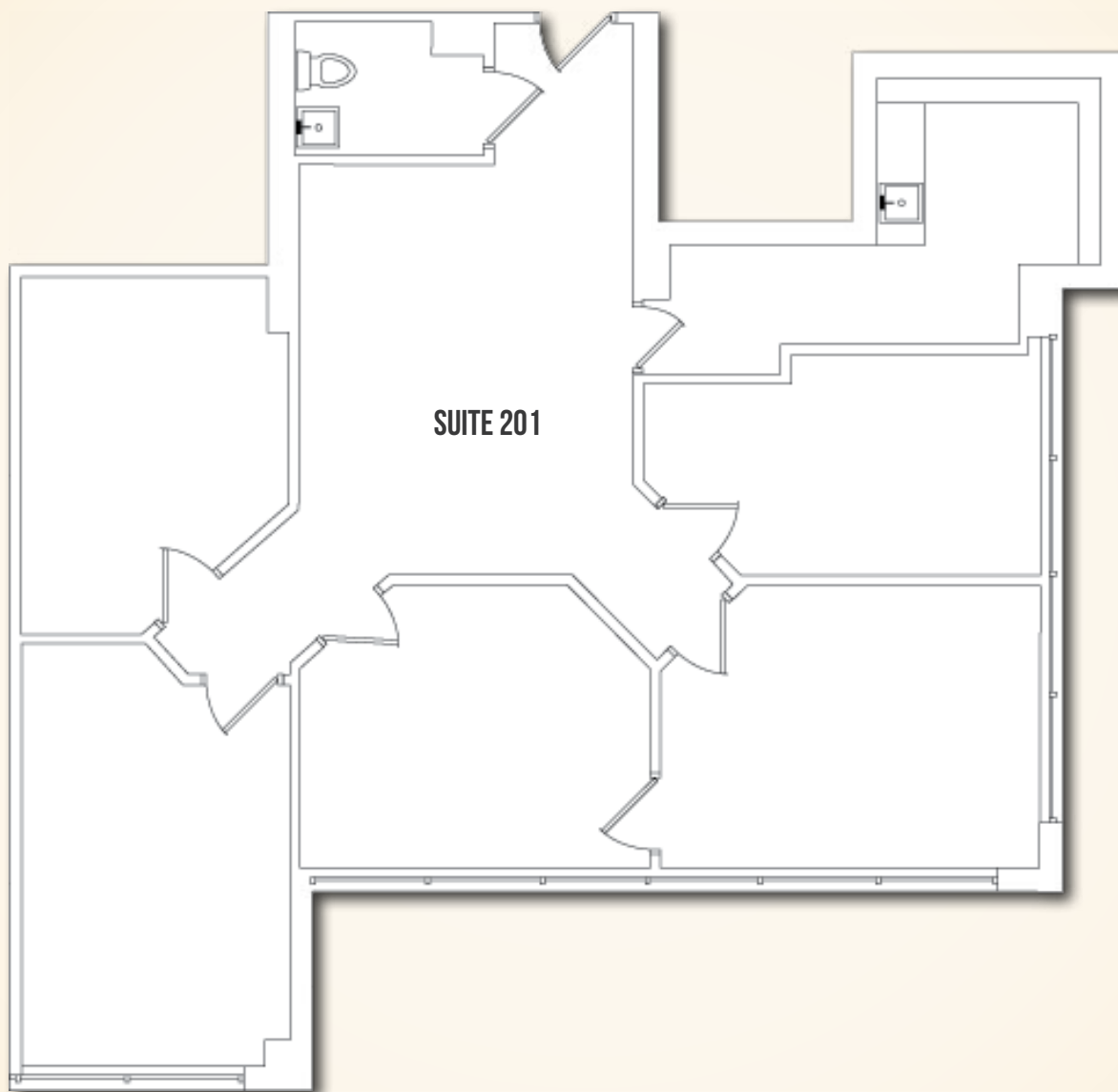
bwhitty@mackenziecommercial.com

FOR LEASE

Baltimore County, MD

FLOOR PLAN

6 PARK CENTER COURT | OWINGS MILLS, MARYLAND, 21117



Meghan Roy

☎ 410.494.4846

✉ mroy@mackenziecommercial.com

Matt Mueller

☎ 410.494.6658

✉ mmueller@mackenziecommercial.com

Henson Ford

☎ 410.494.6657

✉ hford@mackenziecommercial.com

Joe Bradley

☎ 410.494.4862

✉ jbradley@mackenziecommercial.com

Bill Whitty

☎ 410.494.4800

✉ bwhitty@mackenziecommercial.com