

SUBLEASE

Baltimore County, MD

2219 YORK ROAD

TIMONIUM, MARYLAND, 21093

AVAILABLE

Suite 300: 1,400 - 3,124 sf

RENTAL RATE

\$19.50/sf, Full Service

TERM

Through April 30, 2020

PARKING RATIO

6 : 1,000 sf

ZONING

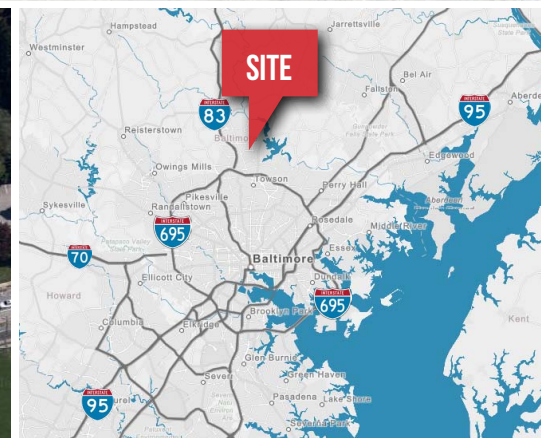
MR - Manufacturing Restricted

NEARBY AMENITIES

Dining, Retail, Banking, Personal Services

HIGHLIGHTS

- ▶ Fully built-out office available for sublease in a Class 'A' building
- ▶ Prominently located on York Road with close proximity to I-83 and I-695
- ▶ Within walking distance to several restaurants and amenities



DEMOS

	1 Mile	3 Miles	5 Miles
Population	7,380	65,823	126,964
No. of Households	2,985	27,356	50,604
Avg. Household Size	2.47	2.31	2.32
Median Age	44.4	43.6	41.5
Median HH Income	\$78,877	\$75,675	\$79,743
Avg. HH Income	\$93,517	\$103,514	\$112,602
Daytime Employees	14,296	54,858	128,418

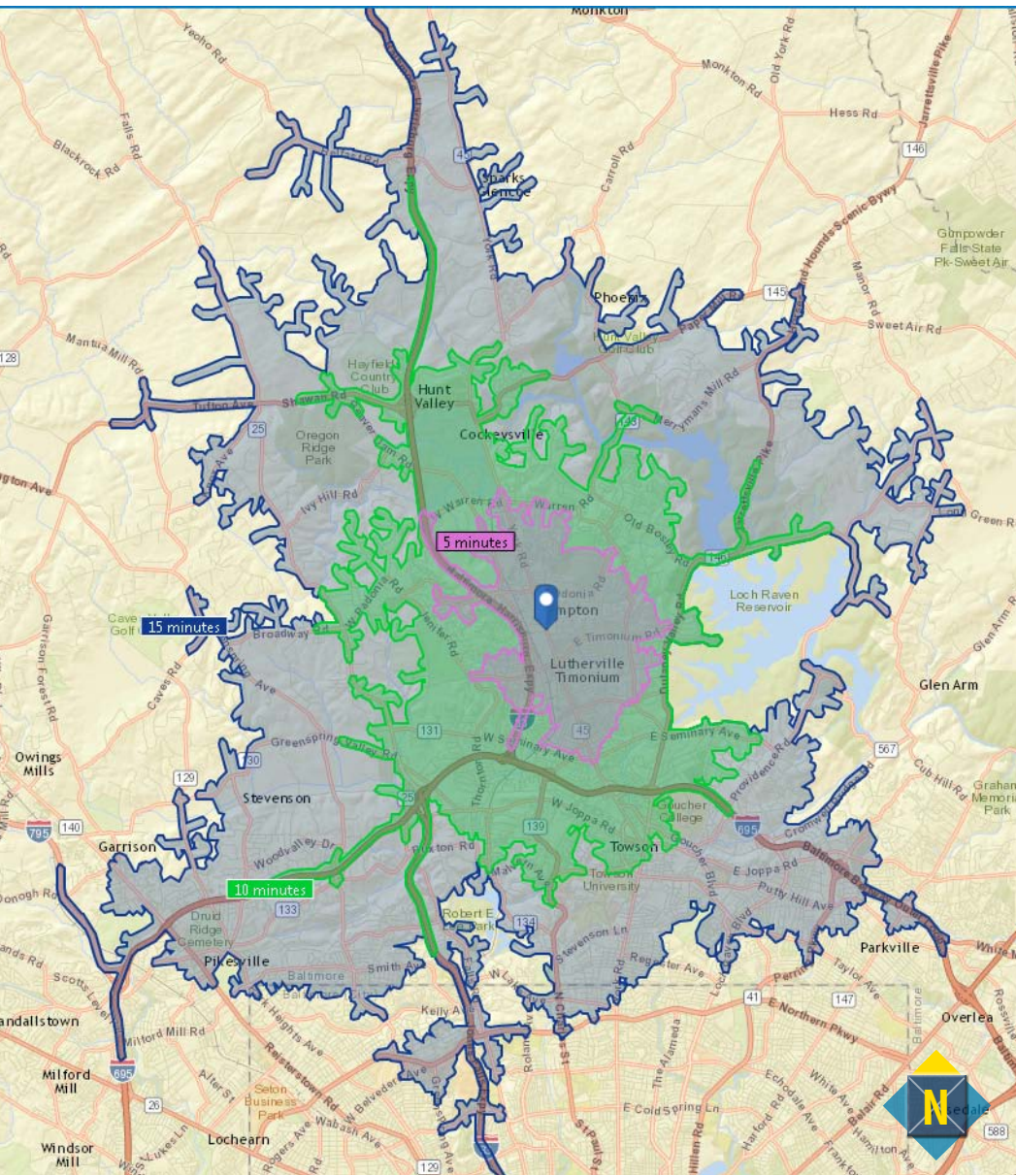


SUBLEASE

Baltimore County, MD

DRIVETIME / TRADE AREA

2219 YORK ROAD | TIMONIUM, MARYLAND 21093



- Timonium Square Shopping Center**
- Giant
 - Panera Bread
 - DOLLAR TREE
 - Starbucks
 - ZOË'S KITCHEN
 - Qdoba
 - STAPLES
 - SALLY BEAUTY SUPPLY
 - Pasta Mista
 - 2106
 - NALLEY PRESS

SUBLEASE

Baltimore County, MD

FLOOR PLAN

2219 YORK ROAD | TIMONIUM, MARYLAND 21093

