

SUBLEASE

 Anne Arundel County, MD

FORT MEADE CORPORATE CENTER

2288 BLUE WATER BOULEVARD | ODENTON, MARYLAND 21113

AVAILABLE

3,057 sf through 7/31/24

BUILDING SIZE

70,609

ZONING

O-NOD

RENTAL RATE

Negotiable

HIGHLIGHTS

- ▶ Convenient to Fort Meade, Annapolis, and Columbia
- ▶ Corner suite with lots of windows
- ▶ First floor conference facility available for tenants' use
- ▶ Food, banking, and daycare in the same shopping center
- ▶ Available through 7/31/24
- ▶ Well appointed mix of office, open space, conference room, and kitchenette
- ▶ Furniture available



SUBLEASE

Anne Arundel County, MD

INTERIOR PHOTOS

FORT MEADE CORPORATE CENTER | 2288 BLUE WATER BOULEVARD | ODENTON, MARYLAND 21113



Trish Farrell | Vice President

☎ 410.974.9003 ✉ tfarrell@mackenziecommercial.com

Mackenzie Commercial Real Estate Services, LLC • 410-974-9336 • 410 Severn Avenue | Annapolis, Maryland 21403 • www.MACKENZIECOMMERCIAL.com

Bethany Hobbs | Real Estate Advisor

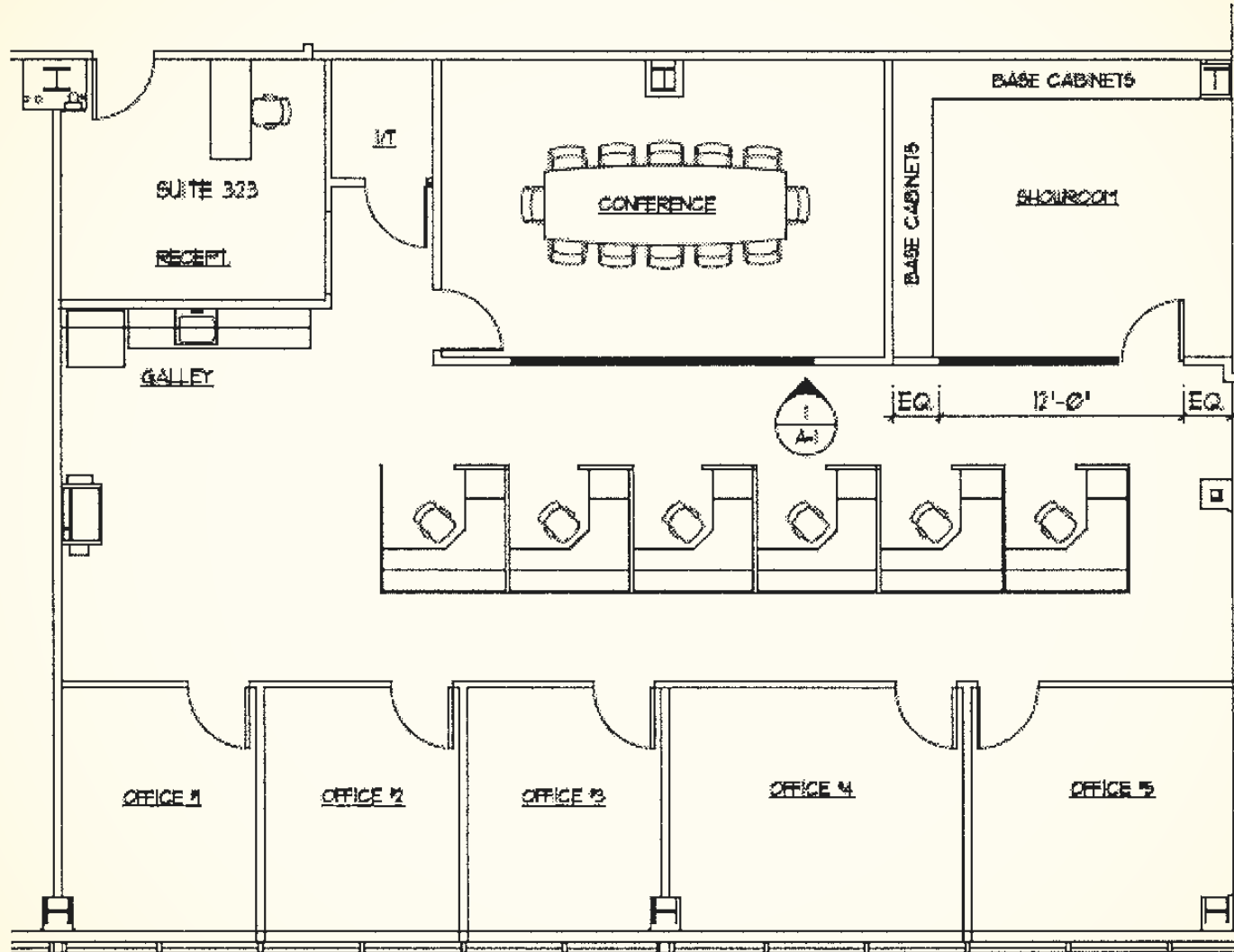
☎ 410.953.0359 ✉ bhobbs@mackenziecommercial.com

SUBLEASE

Anne Arundel County, MD

SUITE 323

FORT MEADE CORPORATE CENTER | 2288 BLUE WATER BOULEVARD | ODENTON, MARYLAND 21113



SUBLEASE

Anne Arundel County, MD

AERIAL

FORT MEADE CORPORATE CENTER | 2288 BLUE WATER BOULEVARD | ODENTON, MARYLAND 21113



SUBLEASE

Anne Arundel County, MD

TRADE AREA

FORT MEADE CORPORATE CENTER | 2288 BLUE WATER BOULEVARD | ODENTON, MARYLAND 21113

