

# SUBLEASE

 Anne Arundel County, MD

# FORT MEADE CORPORATE CENTER

2288 BLUE WATER BOULEVARD | ODENTON, MARYLAND 21113

## AVAILABLE

3,057 sf through 7/31/24

## BUILDING SIZE

70,609

## ZONING

O-NOD

## RENTAL RATE

Negotiable, plus free rent

## HIGHLIGHTS

- ▶ Convenient to Fort Meade, Annapolis, and Columbia
- ▶ Corner suite with lots of windows
- ▶ First floor conference facility available for tenants' use
- ▶ Food, banking, and daycare in the same shopping center
- ▶ Available through 7/31/24
- ▶ Well appointed mix of office, open space, conference room, and kitchenette
- ▶ Furniture available



# SUBLEASE

Anne Arundel County, MD

# INTERIOR PHOTOS

FORT MEADE CORPORATE CENTER | 2288 BLUE WATER BOULEVARD | ODENTON, MARYLAND 21113

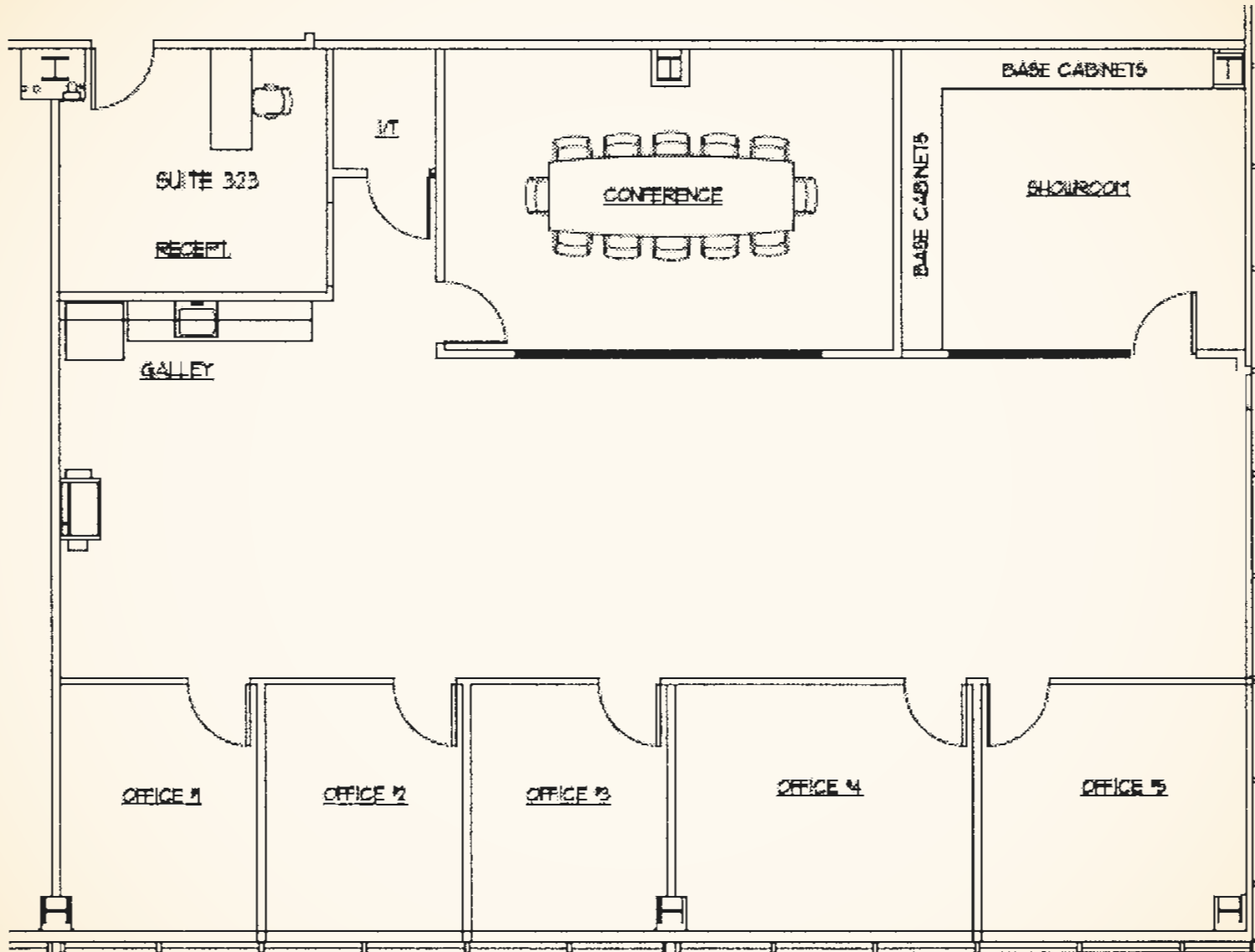


# SUBLEASE

Anne Arundel County, MD

# SUITE 323

FORT MEADE CORPORATE CENTER | 2288 BLUE WATER BOULEVARD | ODENTON, MARYLAND 21113



# SUBLEASE

Anne Arundel County, MD

# AERIAL

FORT MEADE CORPORATE CENTER | 2288 BLUE WATER BOULEVARD | ODENTON, MARYLAND 21113



# SUBLEASE

Anne Arundel County, MD

# TRADE AREA

FORT MEADE CORPORATE CENTER | 2288 BLUE WATER BOULEVARD | ODENTON, MARYLAND 21113

