

# FOR LEASE

Howard County, Maryland

# DORSEY PROFESSIONAL CENTER

6805 DOUGLAS LEGUM DR | ELKRIDGE, MD 21075

## AVAILABLE

6,029 sf on the first floor

## BUILDING SIZE

20,400 sf

## PARKING

4.9/1,000

## OCCUPANCY

January 1, 2018

## RENTAL RATE

\$20.50/sf NNN

## HIGHLIGHTS

- ▶ Class A building
- ▶ First floor suite featuring professional build-out, multiple perimeter offices, and open areas
- ▶ Convenient access to I-95, I-295, Rt. 1, and Rt. 100
- ▶ Walking distance to Dorsey Marc Station



**Karen Deeley**

☎ 410.494.4871

✉ [kdeeley@mackenziecommercial.com](mailto:kdeeley@mackenziecommercial.com)

**Adam Nachlas**

☎ 443.798.9343

✉ [anachlas@mackenziecommercial.com](mailto:anachlas@mackenziecommercial.com)

**Hayes Merkert, SIOR**

☎ 443.798.9344

✉ [hmerkert@mackenziecommercial.com](mailto:hmerkert@mackenziecommercial.com)

**Maggie Merkert**

☎ 443.573.3214

✉ [mmerkert@mackenziecommercial.com](mailto:mmerkert@mackenziecommercial.com)

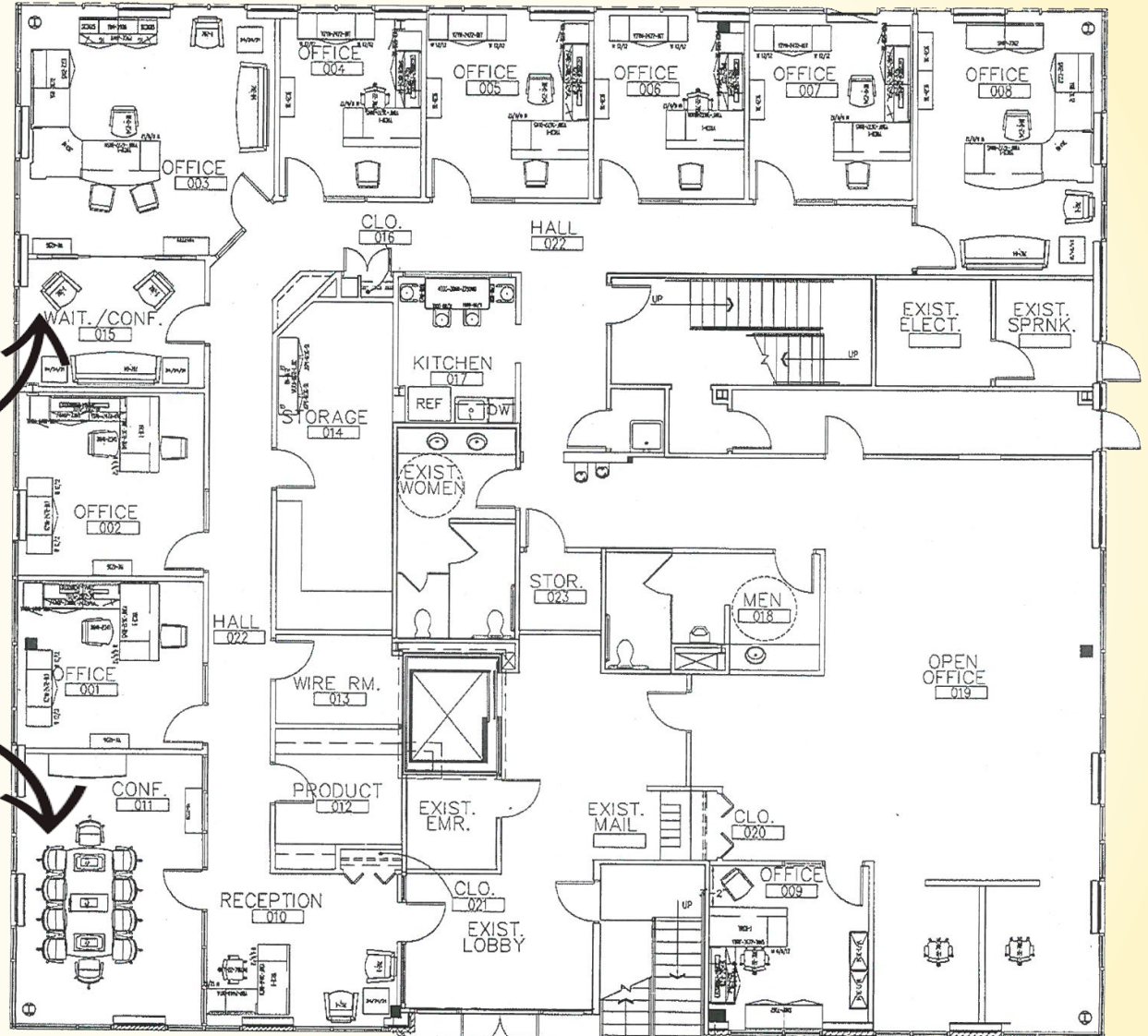
# FOR LEASE

Howard County, Maryland

# FLOOR PLAN: 6,029 SF

DORSEY PROFESSIONAL CENTER | 6805 DOUGLAS LEGUM DR | ELKRIDGE, MD 21075

## MOVE IN READY!



# FOR LEASE

Howard County, Maryland

# BIRDSEYE / TRADE AREA

DORSEY PROFESSIONAL CENTER | 6805 DOUGLAS LEGUM DR | ELK RIDGE, MD 21075

