

FOR SALE

 Baltimore County, MD

COMMERCIAL/INDUSTRIAL BUILDING

8917 PHILADELPHIA RD | BALTIMORE, MARYLAND 21237

AVAILABLE

9,476 sf ±
2,000 sf ± office

LOT SIZE

Approximately 1 acre ± on 3
parcels

ZONING

ML

CEILING HEIGHT

12-16 ±

HIGHLIGHTS

- ▶ Excellent visibility
- ▶ Heavy power
- ▶ Excellent access to major highways
- ▶ 2 dock positions
- ▶ 1 ramped drive-in



Michael Spedden

☎ 410.494.6644
✉ mspedden@mackenziecommercial.com

MacKenzie Commercial Real Estate Services, LLC • 443-573-3200 • 111 S. Calvert Street, Suite 2800 | Baltimore, Maryland 21202 • www.MACKENZIECOMMERCIAL.com

Daniel Hudak, SIOR

☎ 443.573.3205
✉ dhudak@mackenziecommercial.com

Andrew Meeder

☎ 410.494.4881
✉ ameeder@mackenziecommercial.com

FOR SALE

Baltimore County, MD

BIRDSEYE

8917 PHILADELPHIA RD | BALTIMORE, MARYLAND 21237



Michael Spedden

📞 410.494.6644

✉️ mspedden@mackenziecommercial.com

Daniel Hudak, SIOR

📞 443.573.3205

✉️ dhudak@mackenziecommercial.com

Andrew Meeder

📞 410.494.4881

✉️ ameeder@mackenziecommercial.com

Mackenzie Commercial Real Estate Services, LLC • 443-573-3200 • 111 S. Calvert Street, Suite 2800 | Baltimore, Maryland 21202 • www.MACKENZIECOMMERCIAL.com

FOR SALE

Baltimore County, MD

AERIAL

8917 PHILADELPHIA RD | BALTIMORE, MARYLAND 21237

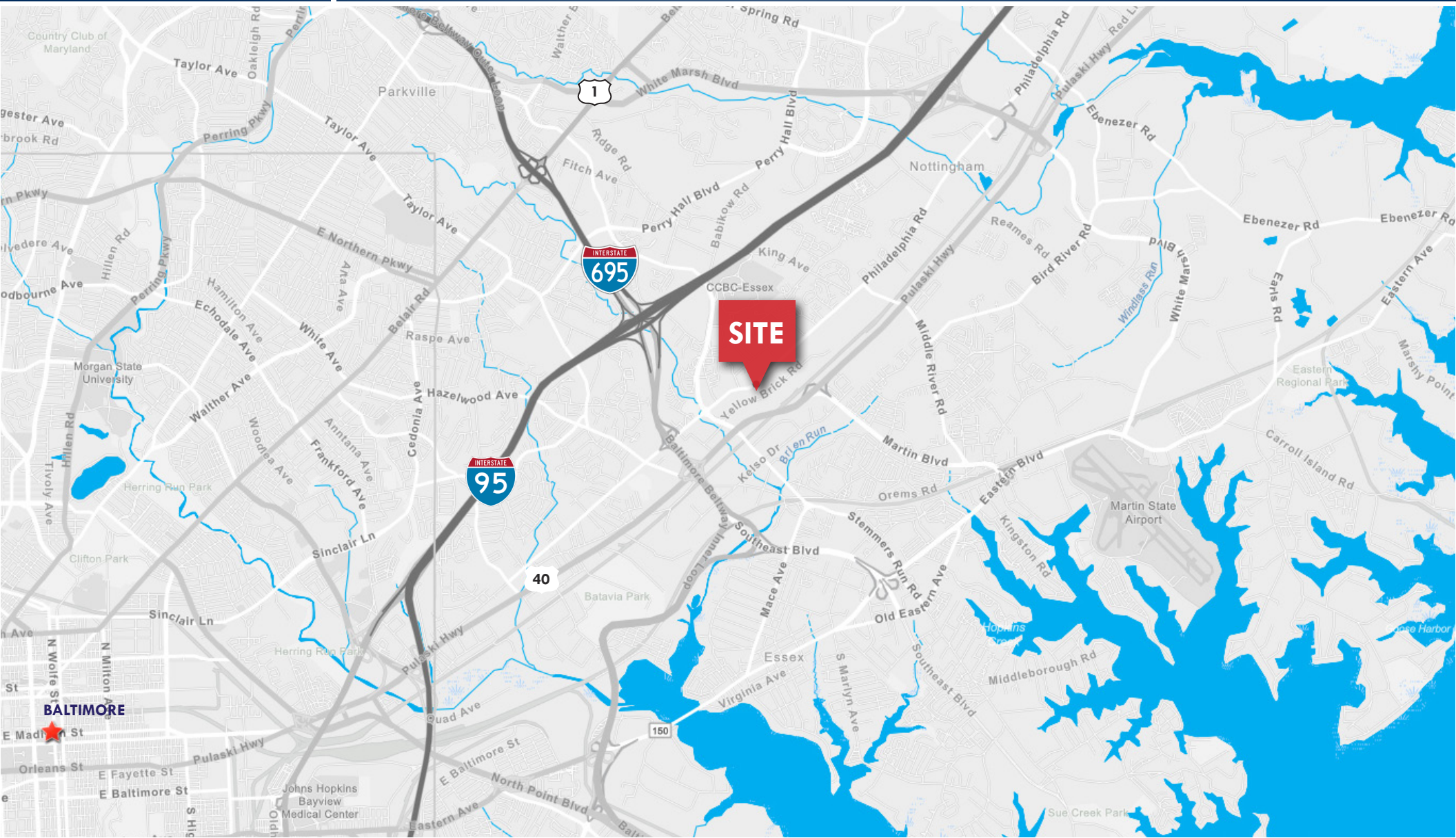


FOR SALE

Baltimore County, MD

LOCATION

8917 PHILADELPHIA RD | BALTIMORE, MARYLAND 21237



Michael Spedden
 ☎ 410.494.6644
 ✉ mspedden@mackenziecommercial.com

Daniel Hudak, SIOR
 ☎ 443.573.3205
 ✉ dhudak@mackenziecommercial.com

Andrew Meeder
 ☎ 410.494.4881
 ✉ ameeder@mackenziecommercial.com

Mackenzie Commercial Real Estate Services, LLC • 443-573-3200 • 111 S. Calvert Street, Suite 2800 | Baltimore, Maryland 21202 • www.MACKENZIECOMMERCIAL.com

No warranty or representation, expressed or implied, is made as to the accuracy of the information contained herein, and same is submitted subject to errors, omissions, change of price, rental or other conditions, withdrawal without notice, and to any specific listing conditions imposed by our principals.

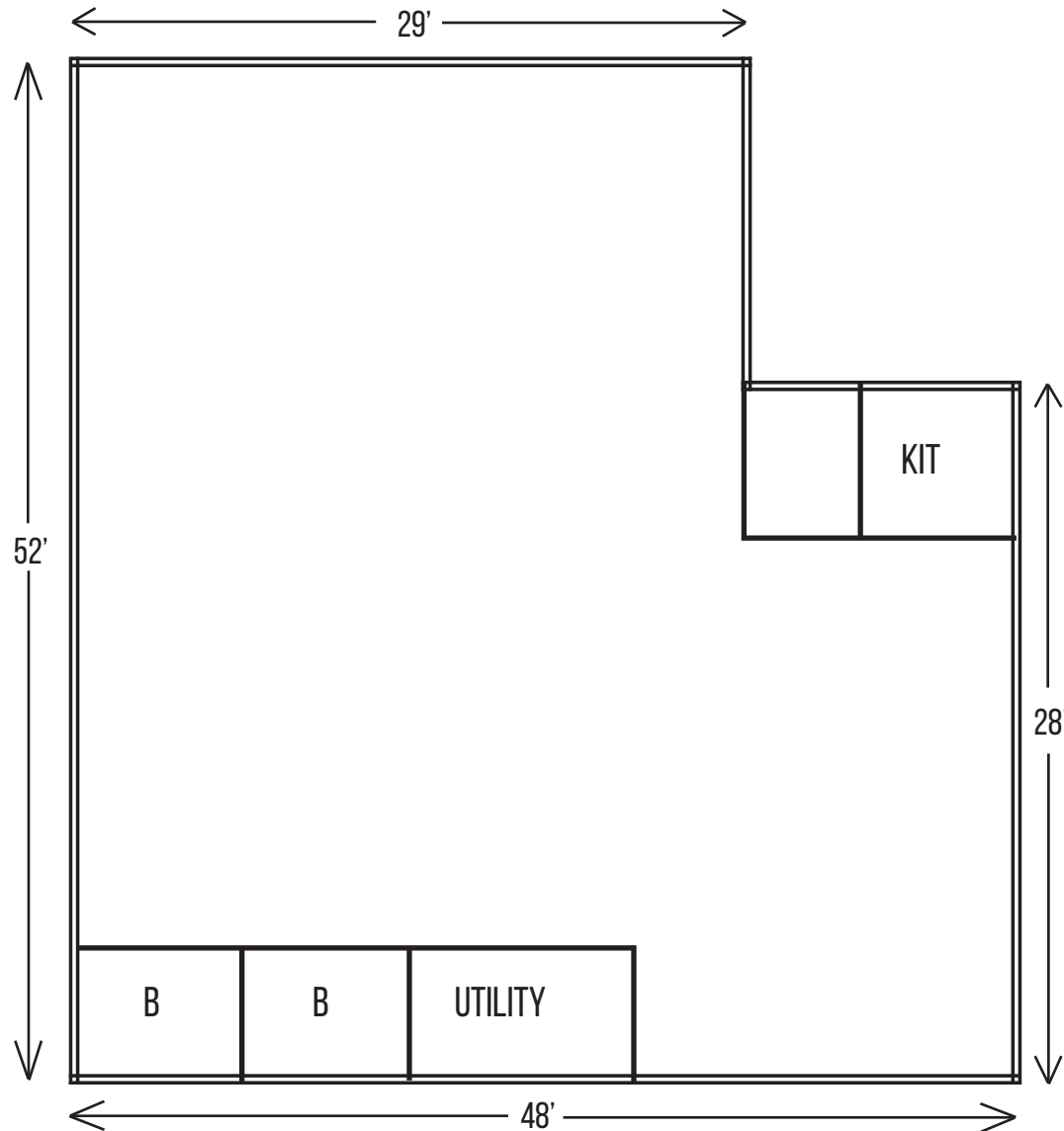
FOR SALE

Baltimore County, MD

FLOOR PLAN

8917 PHILADELPHIA RD | BALTIMORE, MARYLAND 21237

1ST FLOOR OFFICE/
SHOWROOM



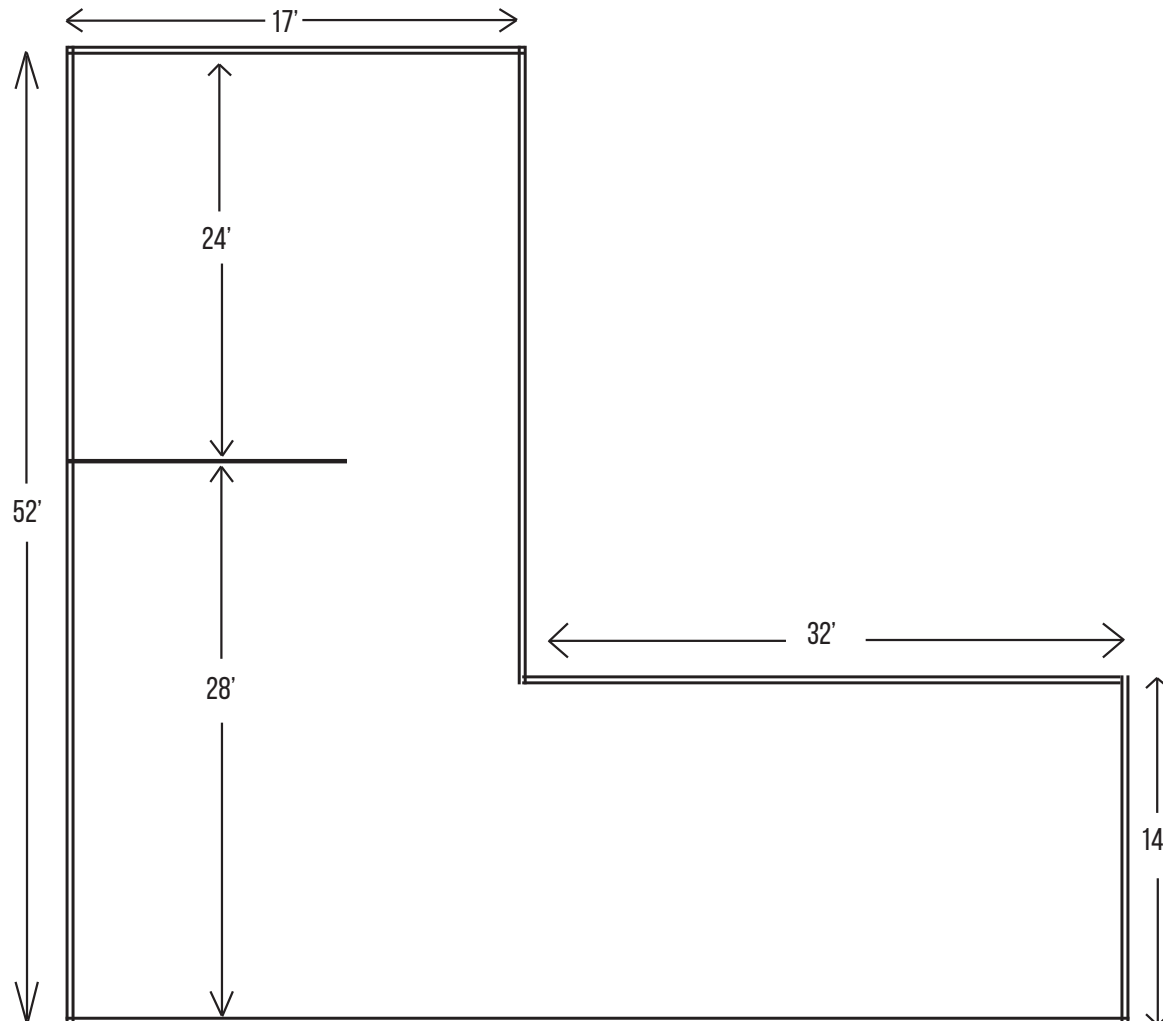
FOR SALE

Baltimore County, MD

FLOOR PLAN

8917 PHILADELPHIA RD | BALTIMORE, MARYLAND 21237

2ND FLOOR OFFICE



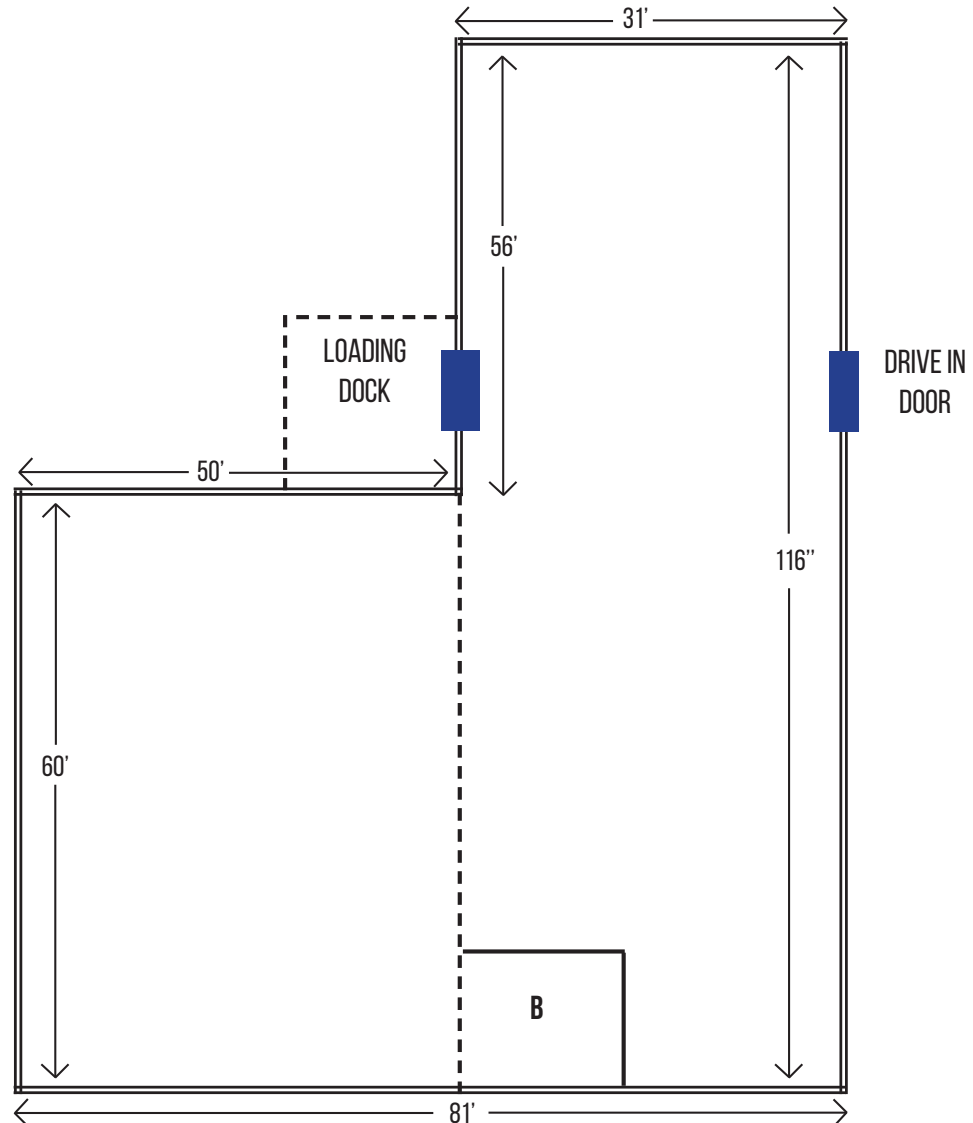
FOR SALE

Baltimore County, MD

FLOOR PLAN

8917 PHILADELPHIA RD | BALTIMORE, MARYLAND 21237

WAREHOUSE



FOR SALE

Baltimore County, MD

FLOOR PLAN

8917 PHILADELPHIA RD | BALTIMORE, MARYLAND 21237

MEZZANINE

