

# FOR LEASE

Baltimore County, MD

# 1001 CROMWELL BRIDGE ROAD

TOWSON, MARYLAND 21286

## AVAILABLE

Suite 212: 2,513 sf  
Suite 300: 5,022 sf  
Suite 308: 1,247 sf

## RENTAL RATE

\$17.50/sf, MG

## OCCUPANCY

Suites 212: Negotiable  
Suites 200 & 300: 60 days

## NEARBY AMENITIES

Dining, retail, banking, and personal services

## HIGHLIGHTS

- ▶ Convenient location with great access to I-695 and Downtown Towson
- ▶ Close proximity to Towson Town Center, Towson University, Goucher College, and Towson Square
- ▶ Tenants have 24 hour access to the building
- ▶ Building is elevator served



STREET VIEW



**Matt Mueller**

☎ 410.494.6658

✉ [mmueller@mackenziecommercial.com](mailto:mmueller@mackenziecommercial.com)

**Henson Ford**

☎ 410.494.6657

✉ [hford@mackenziecommercial.com](mailto:hford@mackenziecommercial.com)

**Bill Whitty**

☎ 410.494.4862

✉ [bwhitty@mackenziecommercial.com](mailto:bwhitty@mackenziecommercial.com)

**Joe Bradley**

☎ 410.494.4892

✉ [jbradley@mackenziecommercial.com](mailto:jbradley@mackenziecommercial.com)

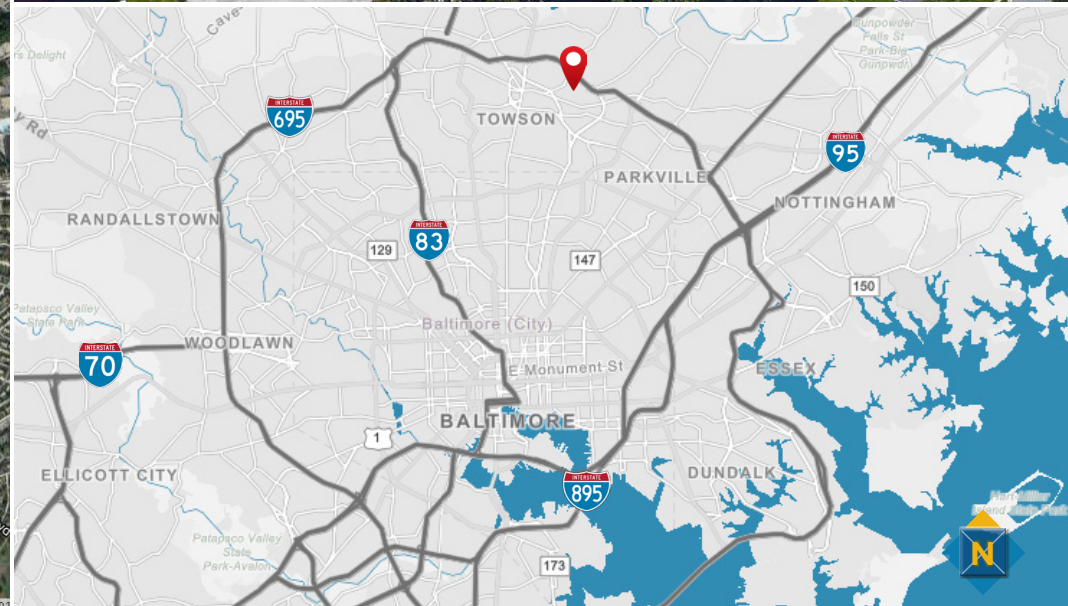
Mackenzie Commercial Real Estate Services, LLC • 410-821-8585 • 2328 W. Joppa Road, Suite 200 | Lutherville-Timonium, Maryland 21093 • [www.MACKENZIECOMMERCIAL.com](http://www.MACKENZIECOMMERCIAL.com)

# FOR LEASE

Baltimore County, MD

# LOCATION

1001 CROMWELL BRIDGE ROAD | TOWSON, MARYLAND 21286



# FOR LEASE

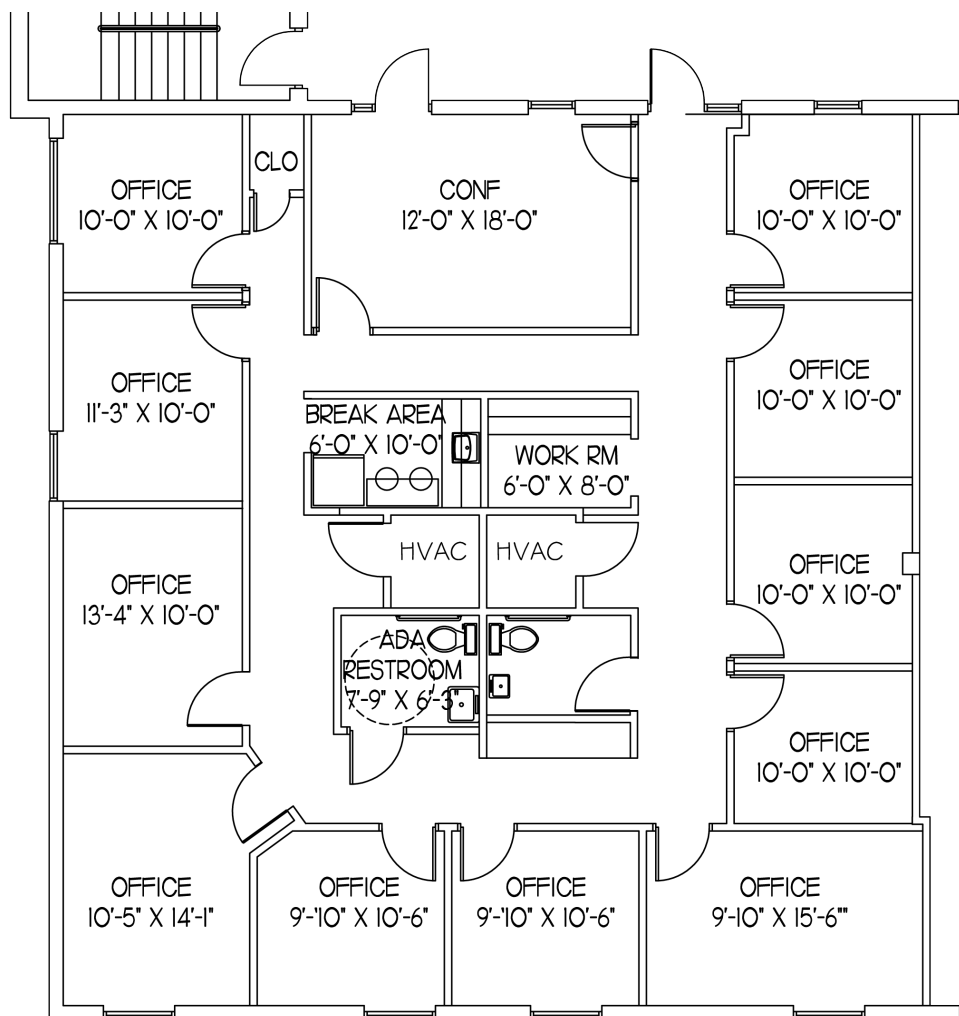
Baltimore County, MD

# FLOOR PLAN

1001 CROMWELL BRIDGE ROAD | TOWSON, MARYLAND 21286

## SUITE 212

2,513 sf



## SUITE 300

5,022 sf

