

FOR SALE

Harford County, Maryland

REDEVELOPMENT OPPORTUNITY

60 - 66 E. LEE STREET & 116 N. HICKORY AVENUE | BEL AIR, MARYLAND 21014

SITE SIZE

- A. 60 E. Lee St. - .34 acres
- B. 66 E. Lee St. - .19 acres
- C. 116 N. Hickory Ave. - .36 acres

BUILDING SIZE

- 60 E. Lee Street - 1,000± sf
- 66 E. Lee Street - 1,500± sf

ZONING

B-2 A (Commercial Business District)

SALE PRICE

\$670,000

HIGHLIGHTS

- ▶ Three parcels of land, improved with two existing office buildings, available for redevelopment opportunity
- ▶ Located in the heart of the Bel Air Business District near Main Street
- ▶ Walking distance to all Bel Air amenities



60 E. LEE STREET



66 E. LEE STREET



Tom Mottley
 ☎ 410.879.1900
 ✉ tmottley@mackenziecommercial.com
 MacKenzie Commercial Real Estate Services, LLC

Beetle Smith
 ☎ 410.879.1900
 ✉ bsmith@mackenziecommercial.com
 • 410-879-1900 • 3465 Box Hill Corporate Center Drive, Suite F | Abingdon, Maryland 21009 • www.MACKENZIECOMMERCIAL.com

Tom Fidler
 ☎ 410.494.4860
 ✉ tfidler@mackenziecommercial.com
 • 410-879-1900 • 3465 Box Hill Corporate Center Drive, Suite F | Abingdon, Maryland 21009 • www.MACKENZIECOMMERCIAL.com

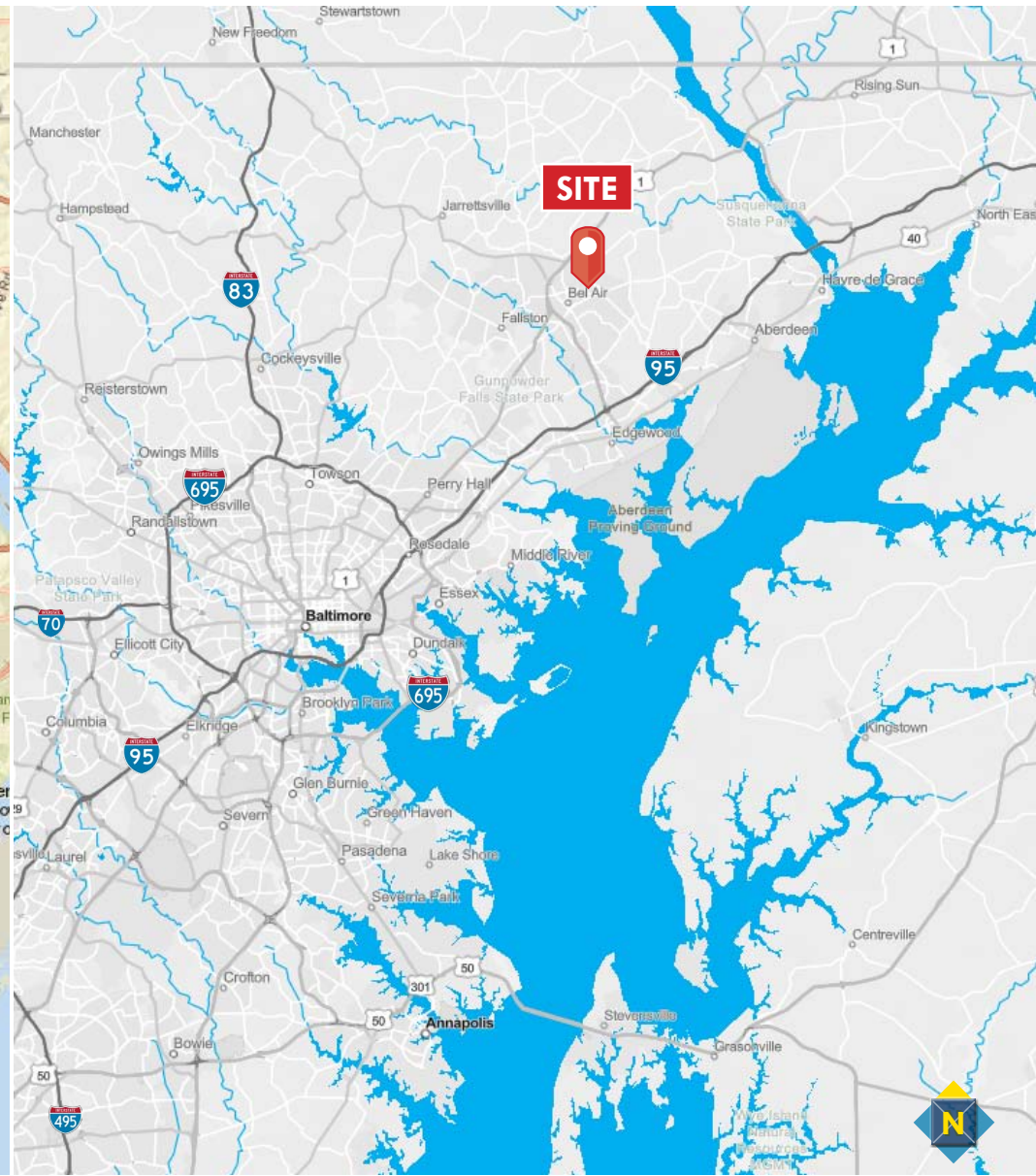
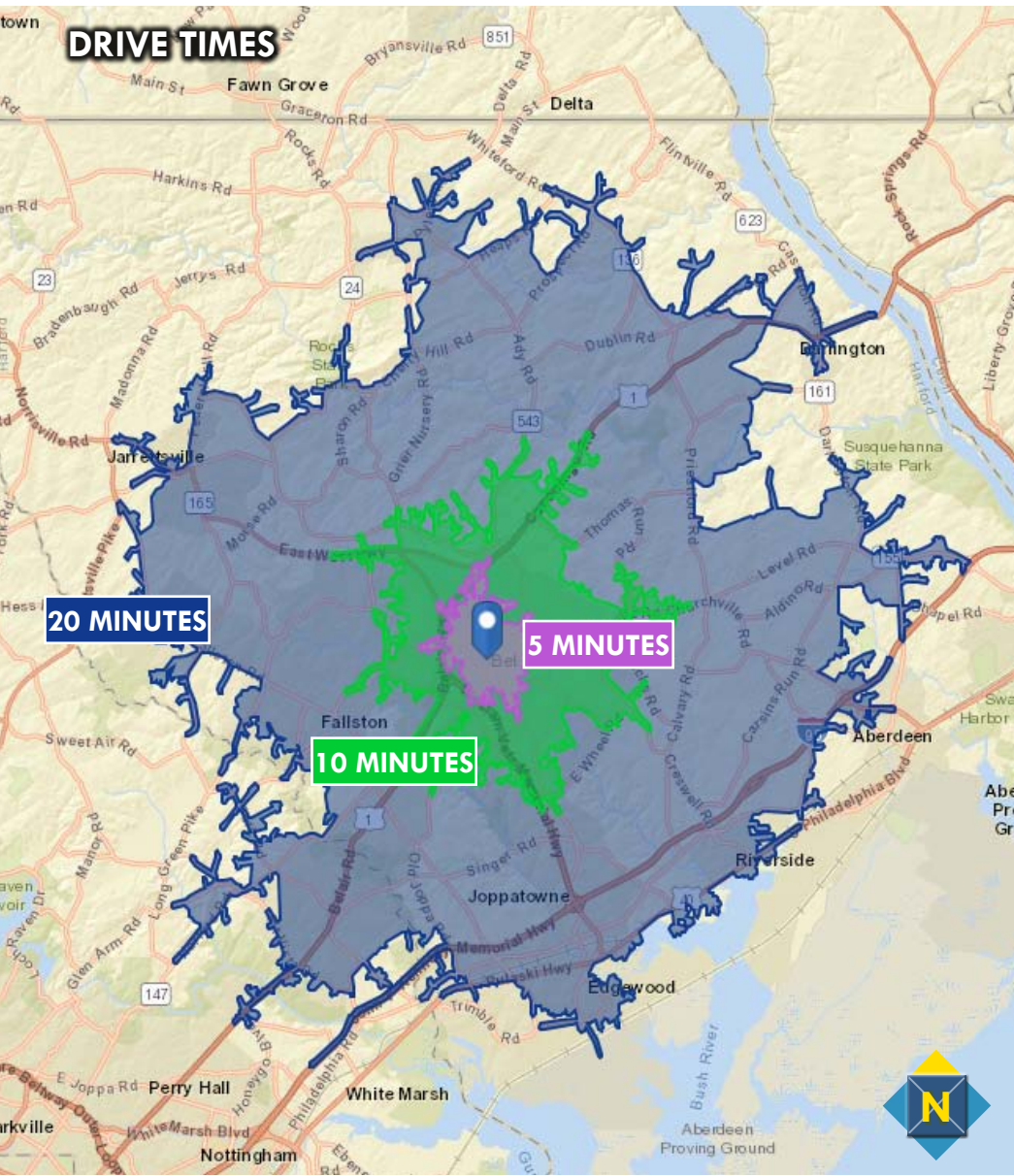
FOR SALE



Harford County, Maryland

LOCATION

60 - 66 E. LEE STREET & 116 N. HICKORY AVENUE | BEL AIR, MARYLAND 21014



MACKENZIE

COMMERCIAL REAL ESTATE SERVICES, LLC

Tom Mottley

410.879.1900

tmottley@mackenziecommercial.com

Mackenzie Commercial Real Estate Services, LLC

Beetle Smith

410.879.1900

bsmith@mackenziecommercial.com

3465 Box Hill Corporate Center Drive, Suite F | Abingdon, Maryland 21009

Tom Fidler

410.494.4860

tfidler@mackenziecommercial.com

www.MACKENZIECOMMERCIAL.com

