

# FOR LEASE

Baltimore County, MD

# 6 PARK CENTER COURT

OWINGS MILLS, MARYLAND, 21117

## AVAILABLE

Suite 107: 1,983 sf

## RENTAL RATE

\$19.50/sf, MG

## OCCUPANCY

60 days

## TERM

3 - 5 years

## PARKING RATIO

4.1 : 1,000 sf

## HIGHLIGHTS

- ▶ Individually controlled heating and cooling within each suite
- ▶ Excellent Reisterstown Road visibility
- ▶ Well-designed flexible suite layout
- ▶ Easily accessible from I-695 and I-795
- ▶ Short drive to many local amenities including Foundry Row



**Matt Mueller**

☎ 410.494.6658

✉ [mmueller@mackenziecommercial.com](mailto:mmueller@mackenziecommercial.com)

**Henson Ford**

☎ 410.494.6657

✉ [hford@mackenziecommercial.com](mailto:hford@mackenziecommercial.com)

**Bill Whitty**

☎ 410.494.4862

✉ [bwhitty@mackenziecommercial.com](mailto:bwhitty@mackenziecommercial.com)

**Joe Bradley**

☎ 410.494.4892

✉ [jbradley@mackenziecommercial.com](mailto:jbradley@mackenziecommercial.com)

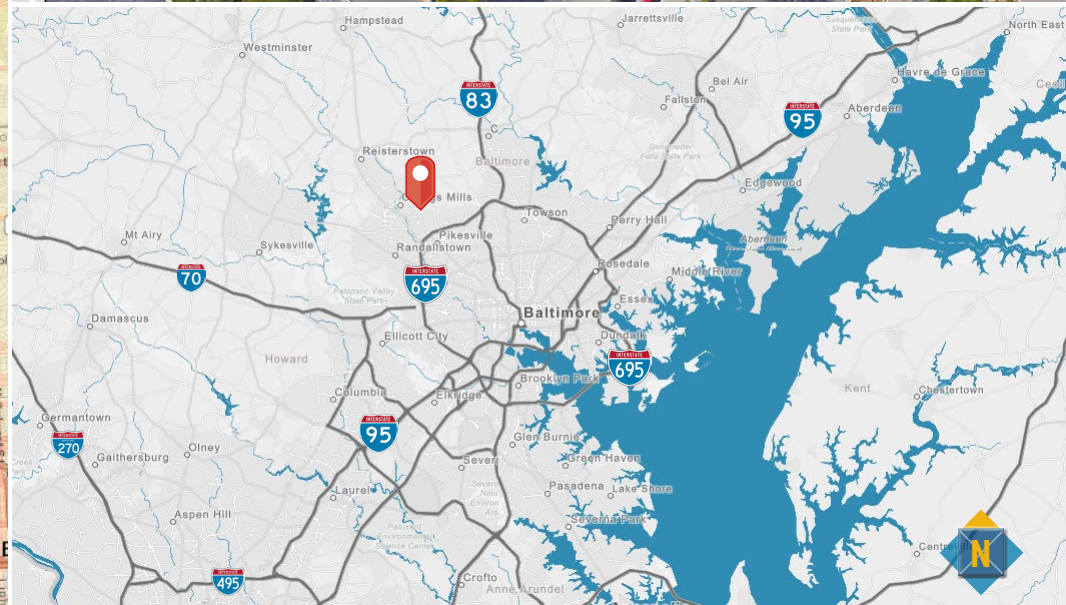
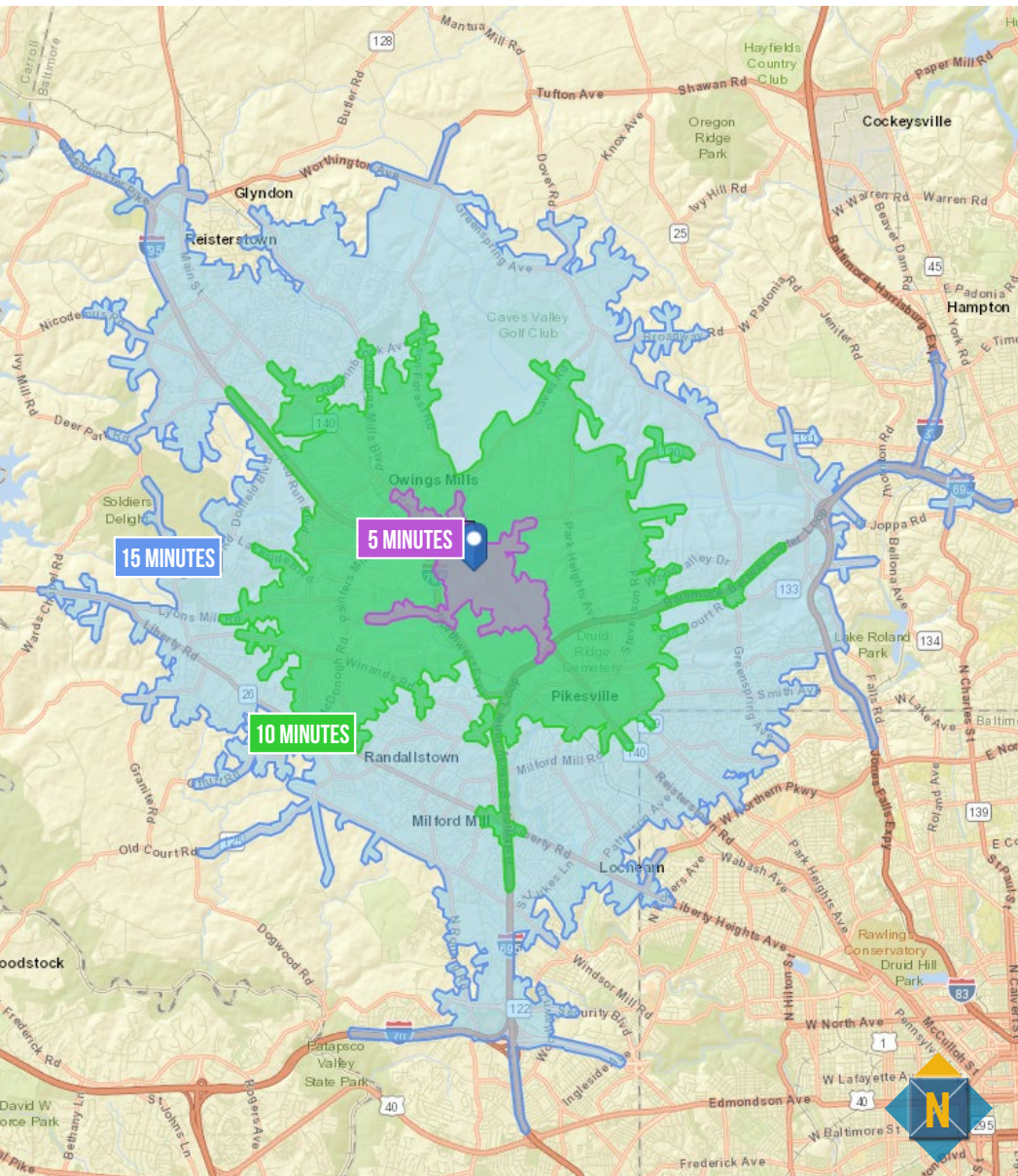
MacKenzie Commercial Real Estate Services, LLC • 410-821-8585 • 2328 W. Joppa Road, Suite 200 | Lutherville-Timonium, Maryland 21103 • [www.MACKENZIECOMMERCIAL.com](http://www.MACKENZIECOMMERCIAL.com)

# FOR LEASE

Baltimore County, MD

# DRIVETIME/LOCATION/BIRDSEYE

6 PARK CENTER COURT | OWINGS MILLS, MARYLAND, 21117



**Matt Mueller**

410.494.6658

mmueller@mackenziecommercial.com

**Henson Ford**

410.494.6657

hford@mackenziecommercial.com

**Bill Whitty**

410.494.4862

bwhitty@mackenziecommercial.com

**Joe Bradley**

410.494.4892

jbradley@mackenziecommercial.com

# FOR LEASE

Baltimore County, MD

## FLOOR PLAN: SUITE 107

6 PARK CENTER COURT | OWINGS MILLS, MARYLAND, 21117

