



THE O'DEA MEDICAL ARTS BUILDING

7505 OSLER DRIVE
TOWSON | MARYLAND



FOR LEASE

Baltimore County, MD

THE O'DEA MEDICAL ARTS BUILDING

7505 OSLER DRIVE | TOWSON, MARYLAND 21204

AVAILABLE

- Suites 214 - 216: 985 sf - 1,989 sf
- Suites 305 - 309: 1,181 sf - 4,462 sf
- Suite 405: 1,111 sf*
- Suites 408 - 410: 1,632 sf - 3,358 sf*
- Suite 409: 2,152 sf*
- Suite 501: 1,728 sf
- Suite 505: 985 sf
- Suite 507: 1,001 sf
- Suite 509: 2,206 sf

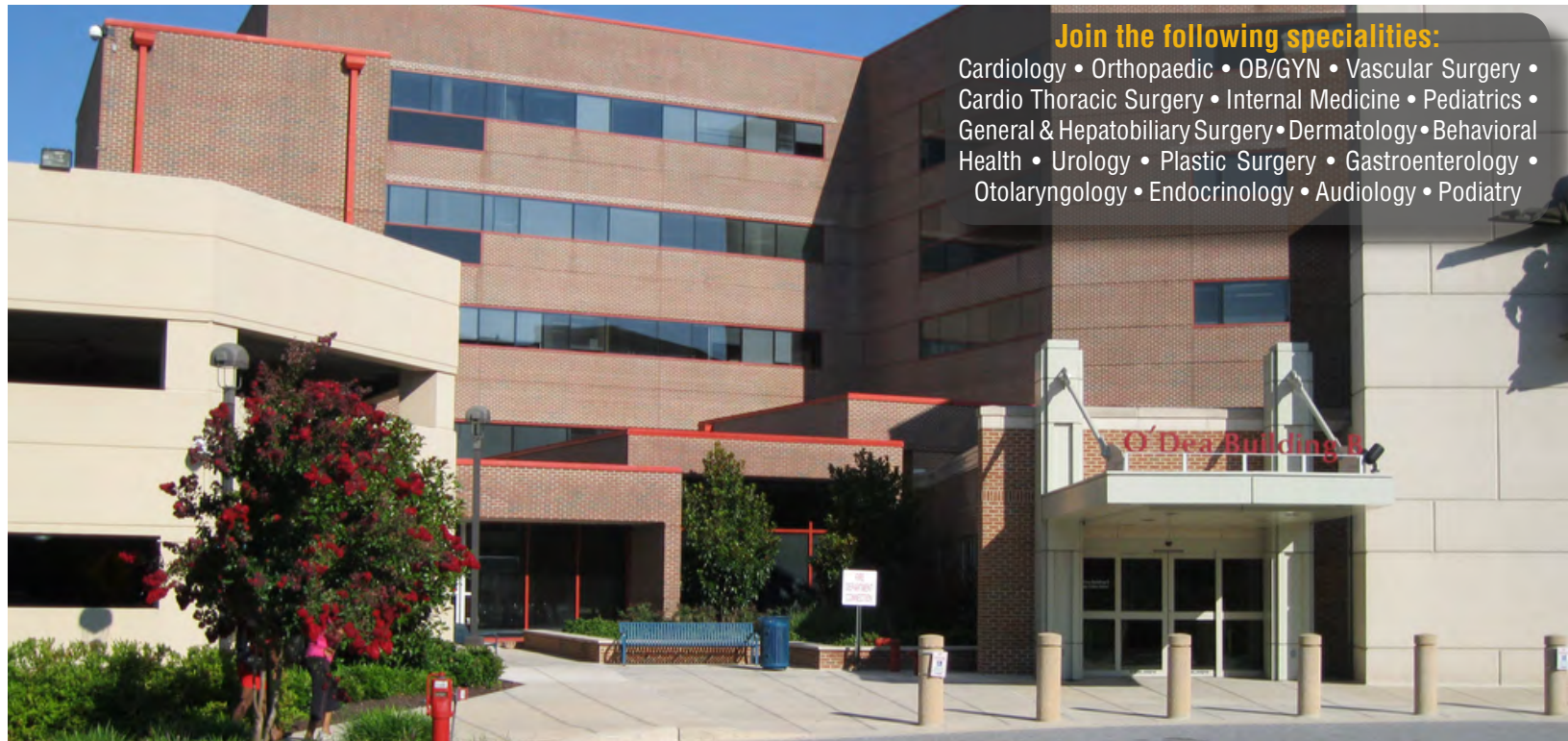
*contiguous up to 9,116 sf

RENTAL RATE

\$20.50/sf, FS

HIGHLIGHTS

- ▶ Class A medical office space available on the campus of University of Maryland St. Joseph Medical Center
- ▶ A variety of sizes to accommodate large and small practices
- ▶ Covered parking with direct access to the building
- ▶ Easy access to I-695 via N. Charles Street



Join the following specialities:

Cardiology • Orthopaedic • OB/GYN • Vascular Surgery •
 Cardio Thoracic Surgery • Internal Medicine • Pediatrics •
 General & Hepatobiliary Surgery • Dermatology • Behavioral
 Health • Urology • Plastic Surgery • Gastroenterology •
 Otolaryngology • Endocrinology • Audiology • Podiatry



Joe Bradley

☎ 410.494.4892

✉ jbradley@mackenziecommercial.com

Mackenzie Commercial Real Estate Services, LLC

Matt Mueller

☎ 410.494.6658

✉ mmueller@mackenziecommercial.com

• 410-821-8585 • 2328 W. Joppa Road, Suite 200 | Lutherville-Timonium, Maryland 21103 • www.MACKENZIECOMMERCIAL.com

Henson Ford

☎ 410.494.6657

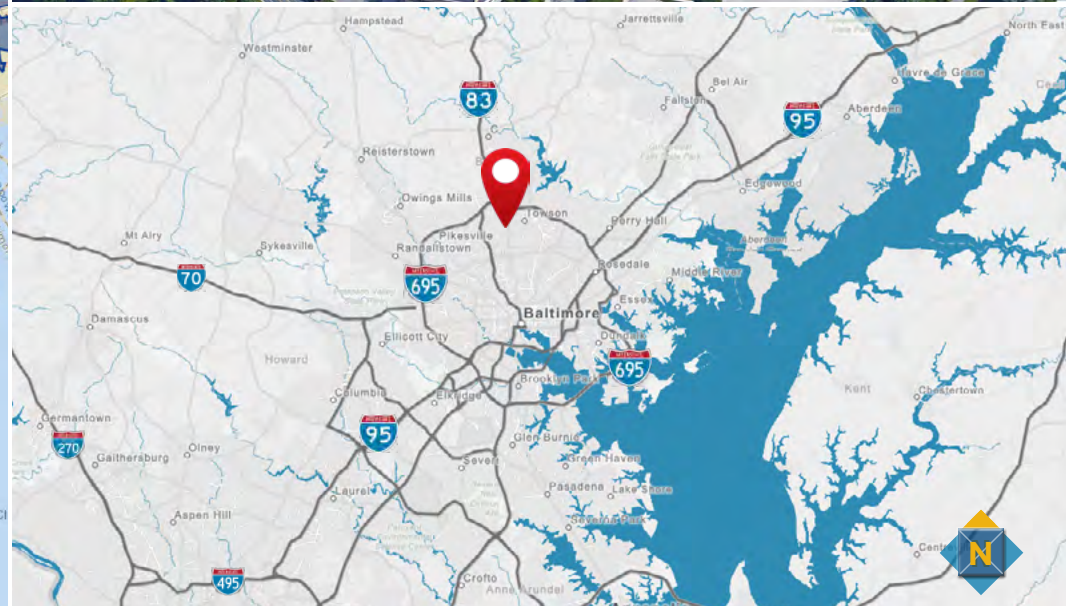
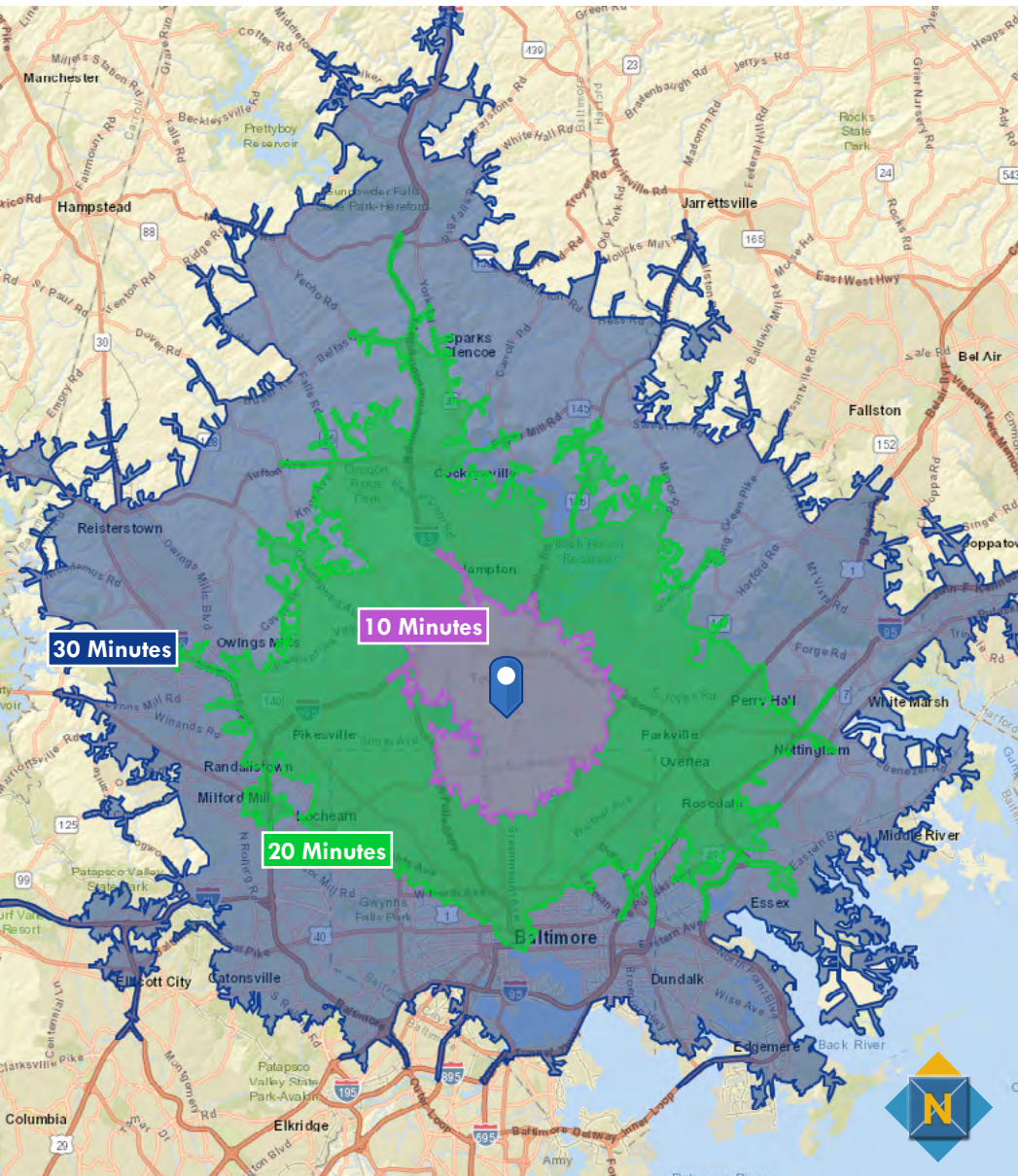
✉ hford@mackenziecommercial.com

FOR LEASE

Baltimore County, MD

LOCATION

THE O'DEA MEDICAL ARTS BUILDING | 7505 OSLER DRIVE | TOWSON, MARYLAND 21204



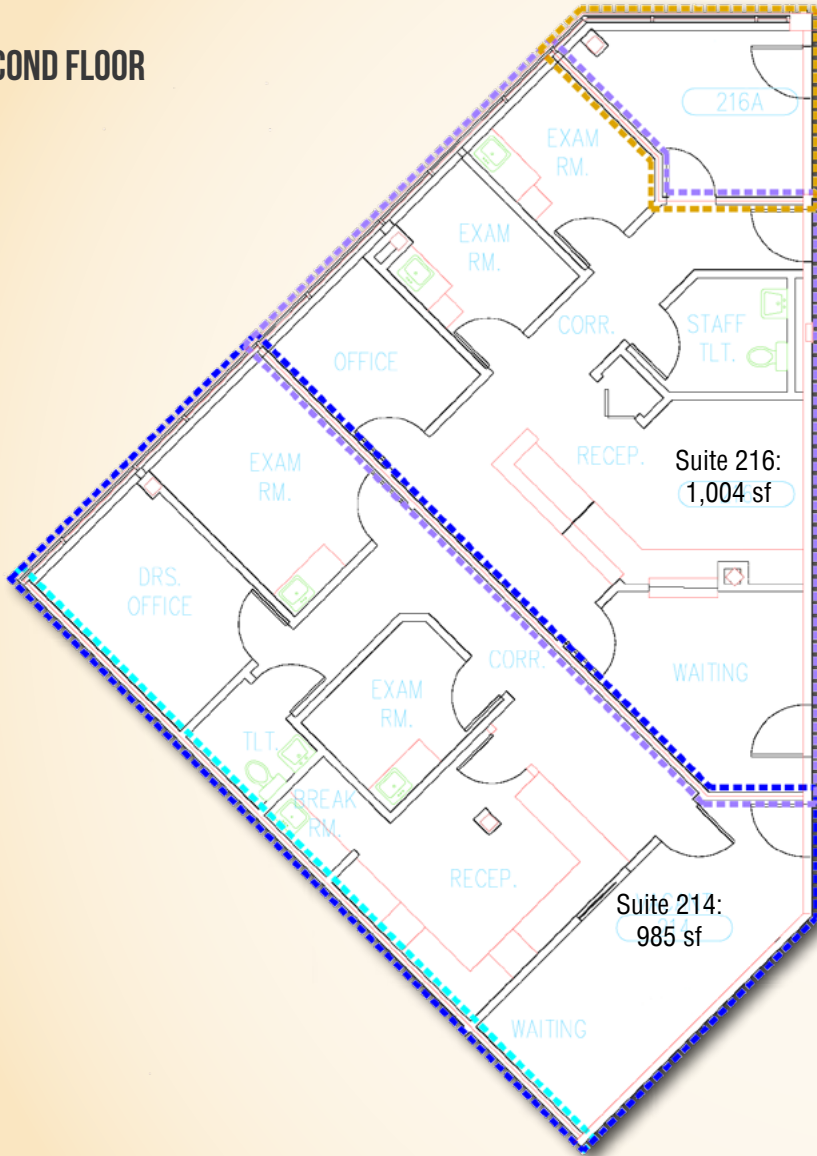
FOR LEASE

Baltimore County, MD

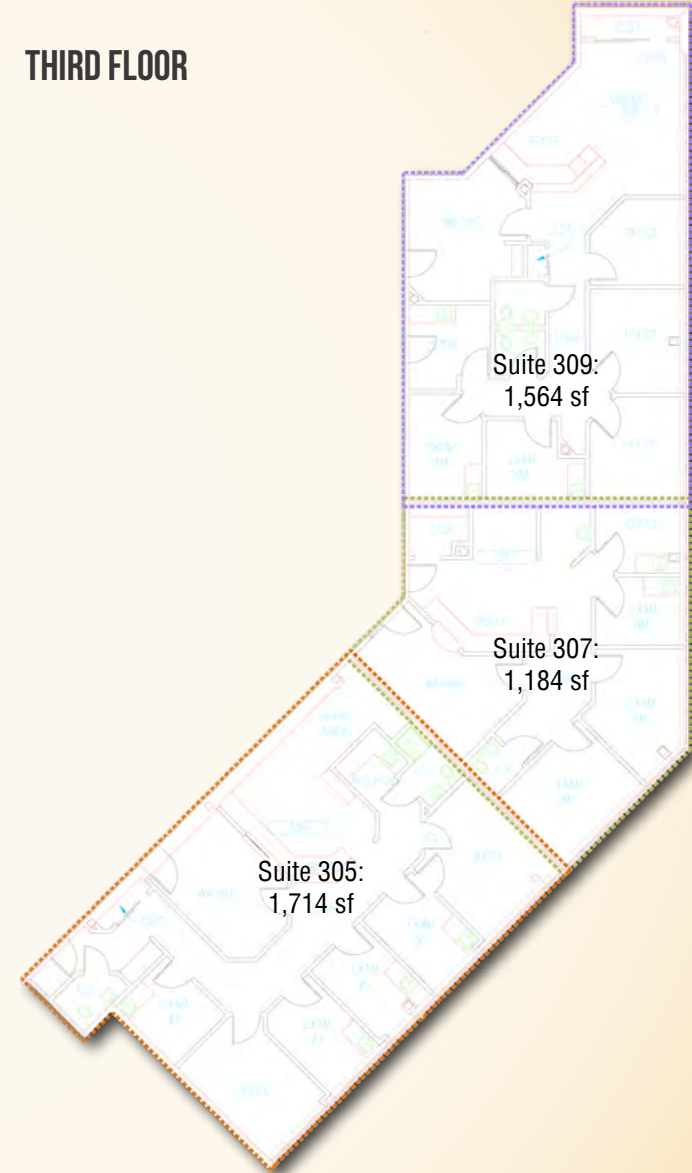
FLOOR PLAN

THE O'DEA MEDICAL ARTS BUILDING | 7505 OSLER DRIVE | TOWSON, MARYLAND 21204

SECOND FLOOR



THIRD FLOOR



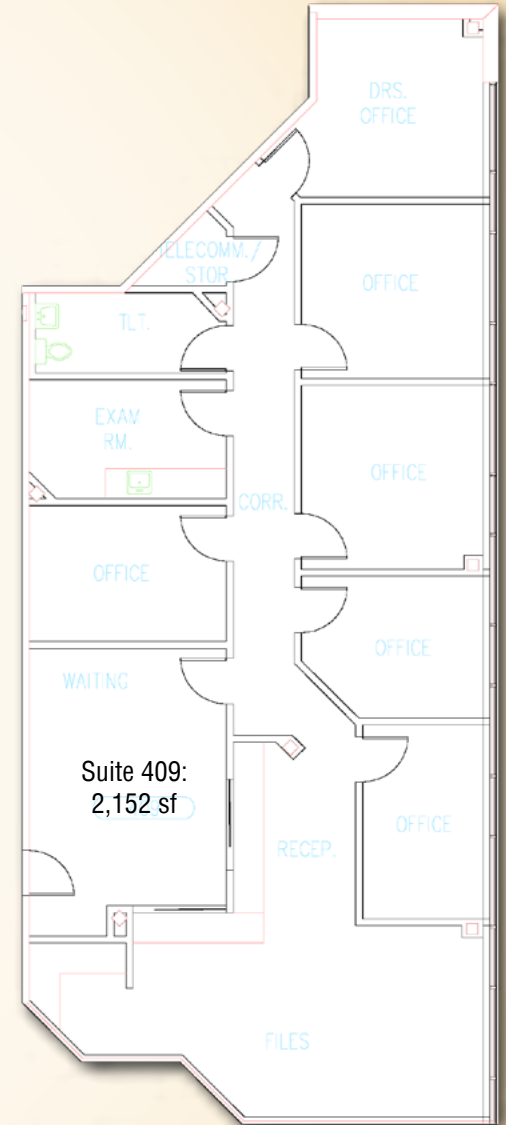
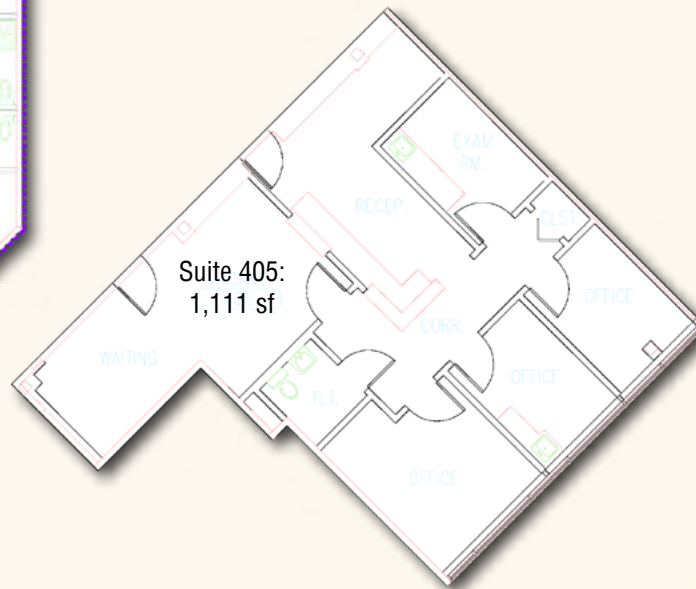
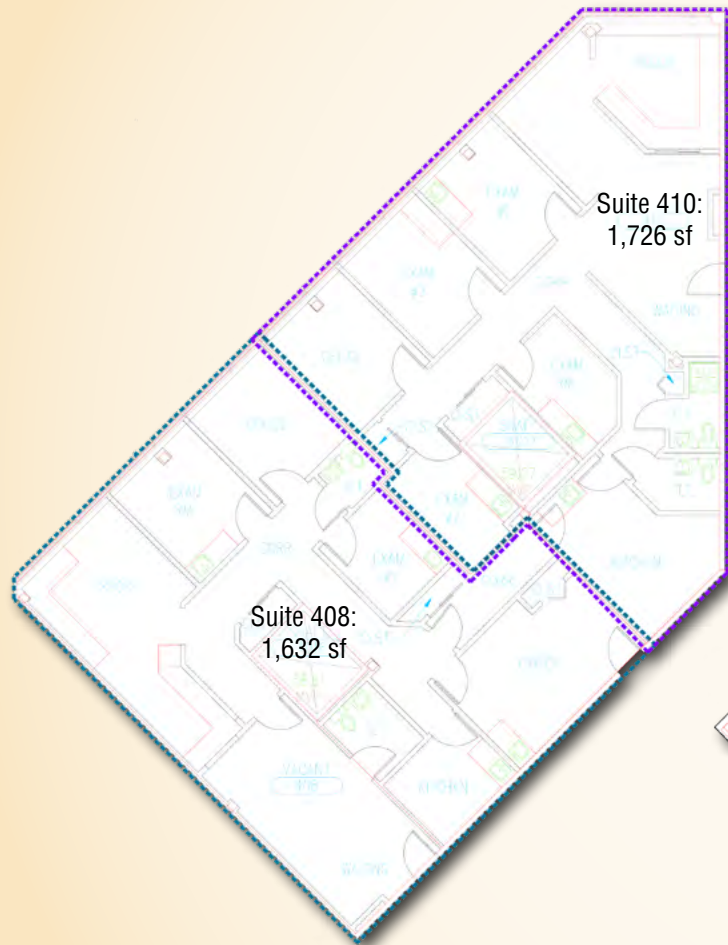
FOR LEASE

Baltimore County, MD

FLOOR PLAN

THE O'DEA MEDICAL ARTS BUILDING | 7505 OSLER DRIVE | TOWSON, MARYLAND 21204

FOURTH FLOOR



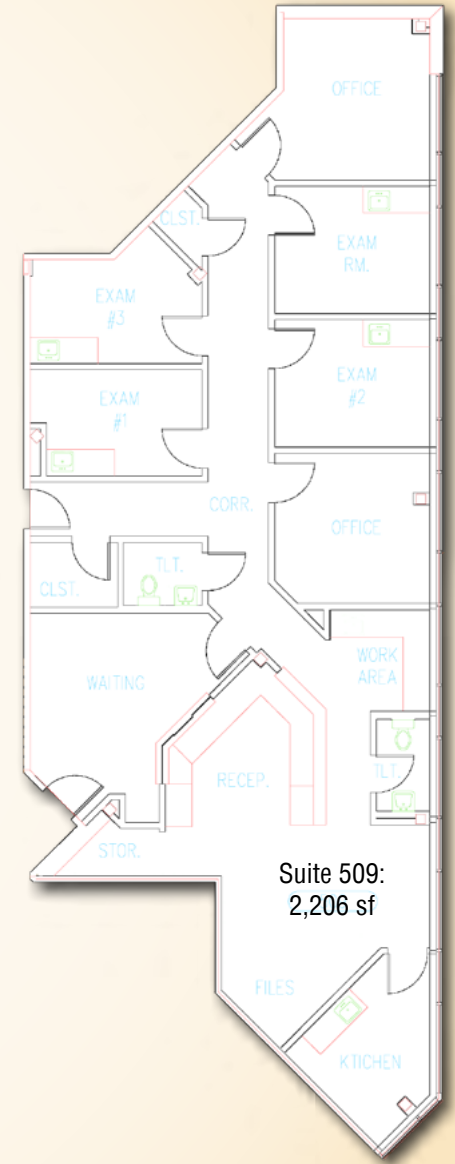
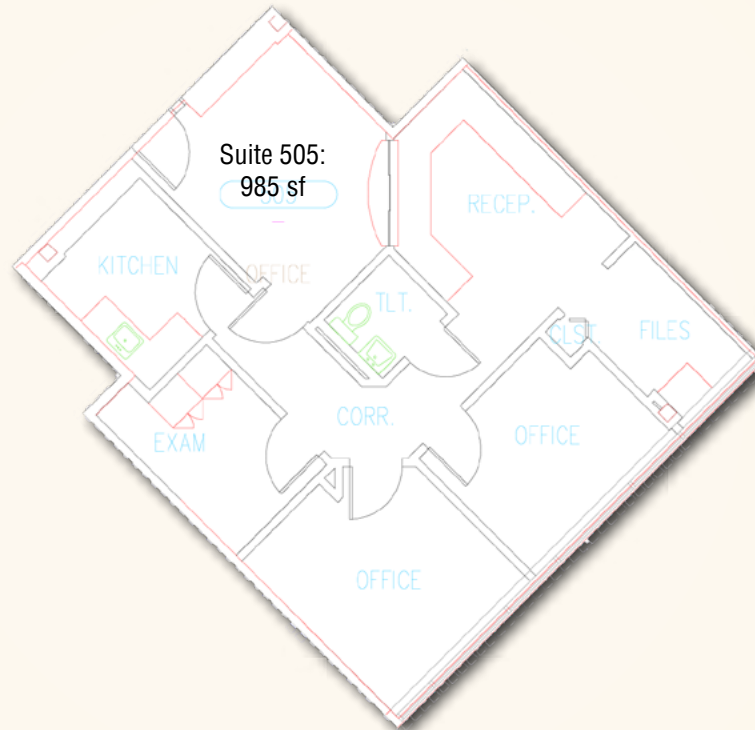
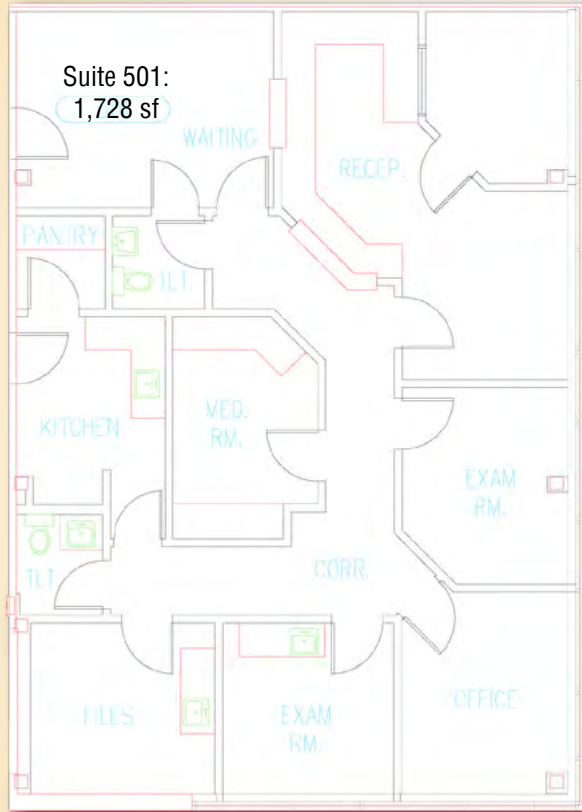
FOR LEASE

Baltimore County, MD

FLOOR PLAN

THE O'DEA MEDICAL ARTS BUILDING | 7505 OSLER DRIVE | TOWSON, MARYLAND 21204

FIFTH FLOOR



FOR LEASE

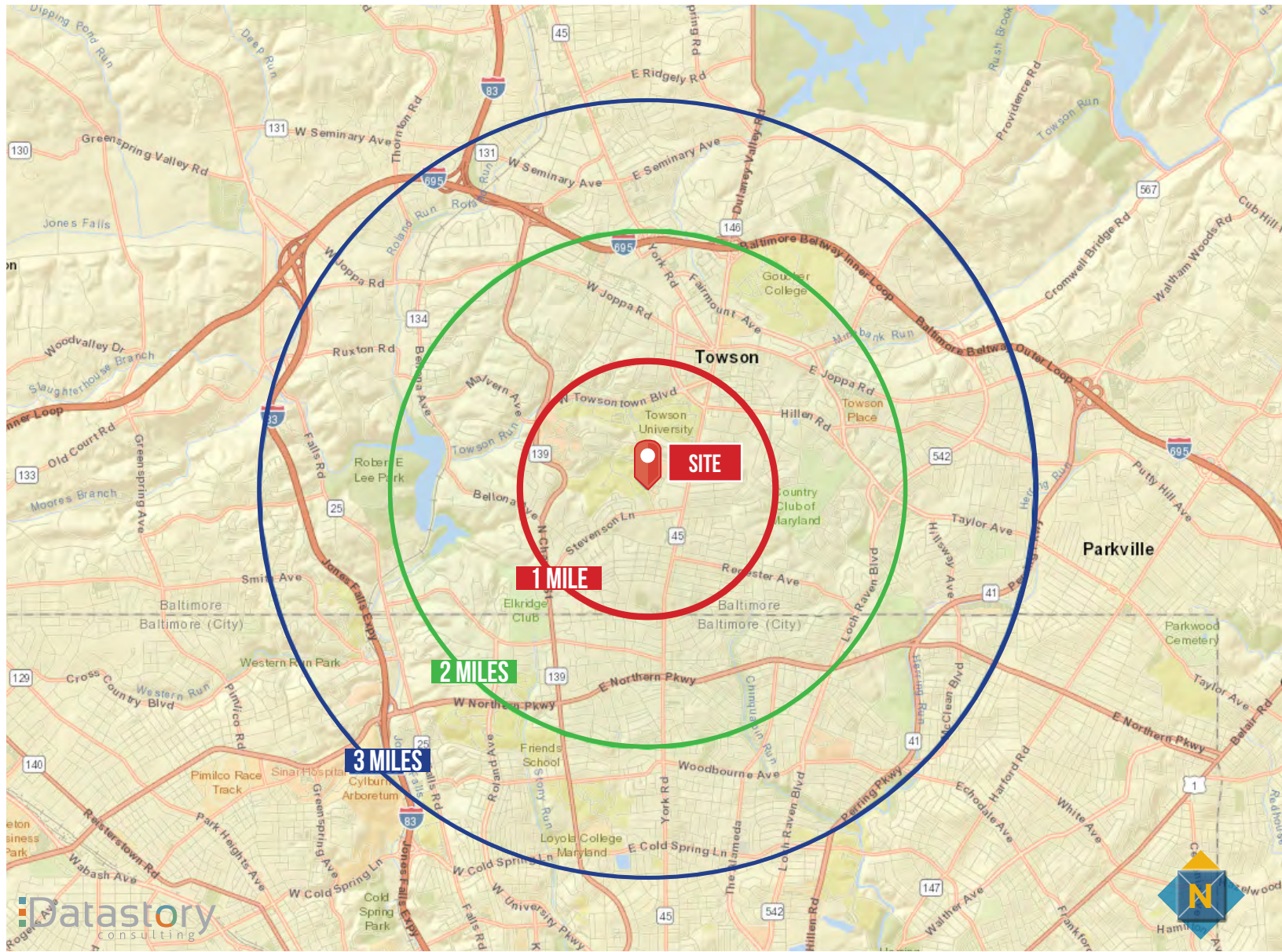
Baltimore County, MD

DEMOGRAPHICS

THE O'DEA MEDICAL ARTS BUILDING | 7505 OSLER DRIVE | TOWSON, MARYLAND 21204

MEDICAL EXPENDITURES

1 mile	2 miles	3 miles
Total Healthcare		
\$46,390,427	\$159,658,464	\$322,888,640
Physician Services		
\$17,010,969	\$57,643,301	\$15,190,367
Eyecare Services		
\$521,638	\$1,791,621	\$3,652,462
Lab Tests, X-Rays		
\$525,265	\$1,779,586	\$3,613,342
Dental Services		
\$2,255,644	\$10,980,712	\$22,031,327
Prescription Drugs		
\$3,353,959	\$12,106,516	\$24,594,452
Nonprescription Drugs		
\$1,108,559	\$3,821,785	\$7,673,748
Eyeglasses and Contact Lenses		
\$818,714	\$2,762,550	\$5,569,633
Median Age		
24.9	35.0	36.1



Datastory consulting