



VALLEY GATEWAY

10801 TONY DRIVE | LUTHERVILLE-TIMONIUM, MARYLAND 20193

FOR
LEASE



MACKENZIE

COMMERCIAL REAL ESTATE SERVICES, LLC

PROPERTY OVERVIEW

HIGHLIGHTS:

MacKenzie Commercial Real Estate Services is pleased to present the opportunity to lease office space at **10801 Tony Drive**, Lutherville-Timonium, Maryland. Located just off of Falls Road across from Green Spring Station in Baltimore County, and within walking distance of retail and John's Hopkins medical offices. Easy access to I-83, I-695 and less than 30 minutes from BWI airport.

AVAILABLE:

2,531 SF - 7,062 SF

RENTAL RATE

\$29.75 PSF, NNN

STORIES:

2 (ELEVATOR SERVED)

LOT SIZE:

2.01 ACRES ±

BUILDING SIZE:

12,000 SF ±

PARKING:

FREE SURFACE SPACE

ZONING:

RC 2 (AGRICULTURE) & O3 (OFFICE PARK)

TRAFFIC AADT:

20,602 AADT (FALLS RD)
12,061 AADT (GREENSPRING VALLEY RD)

BUILDING IMPROVEMENTS:

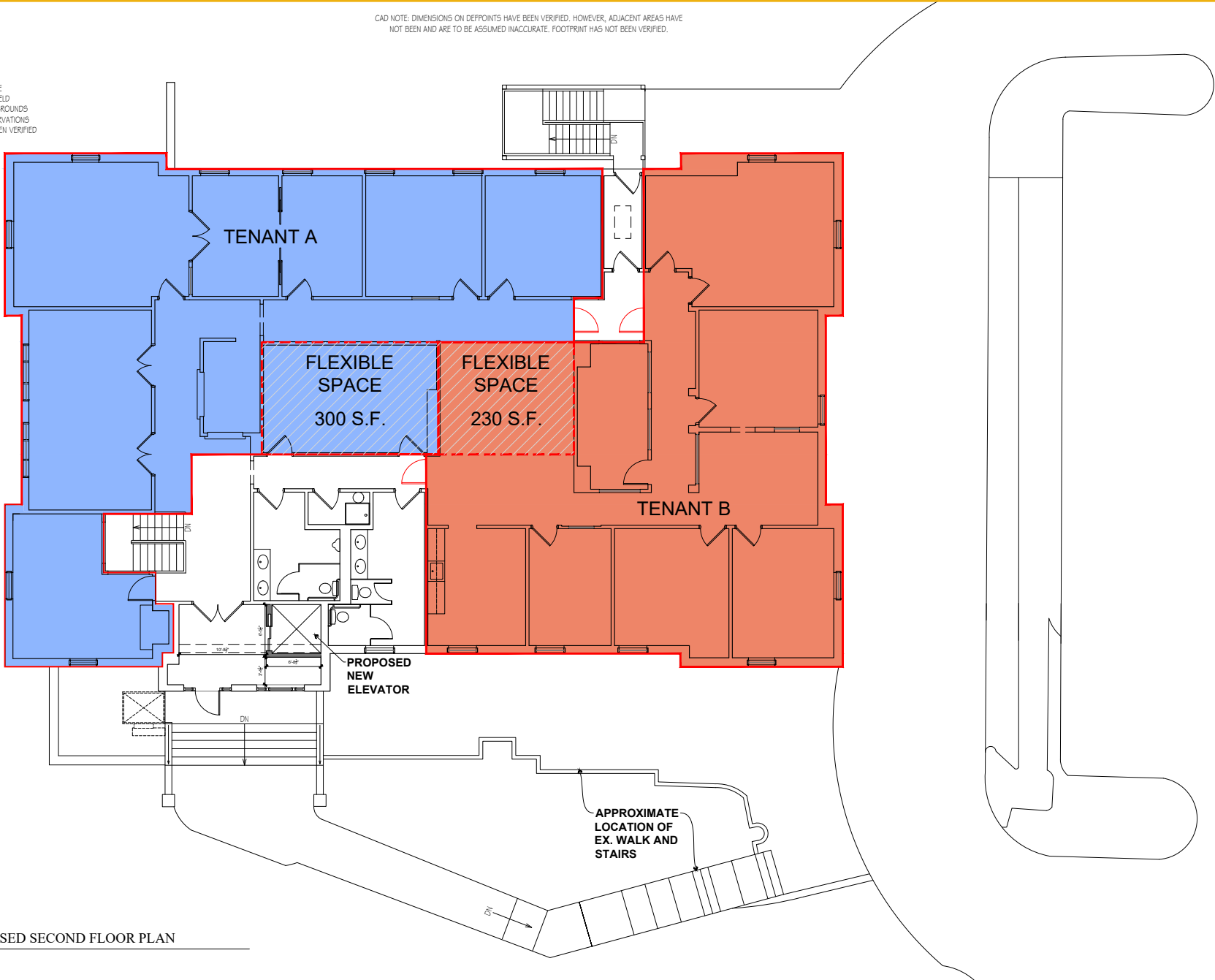
NEW ELEVATOR AND LOBBIES



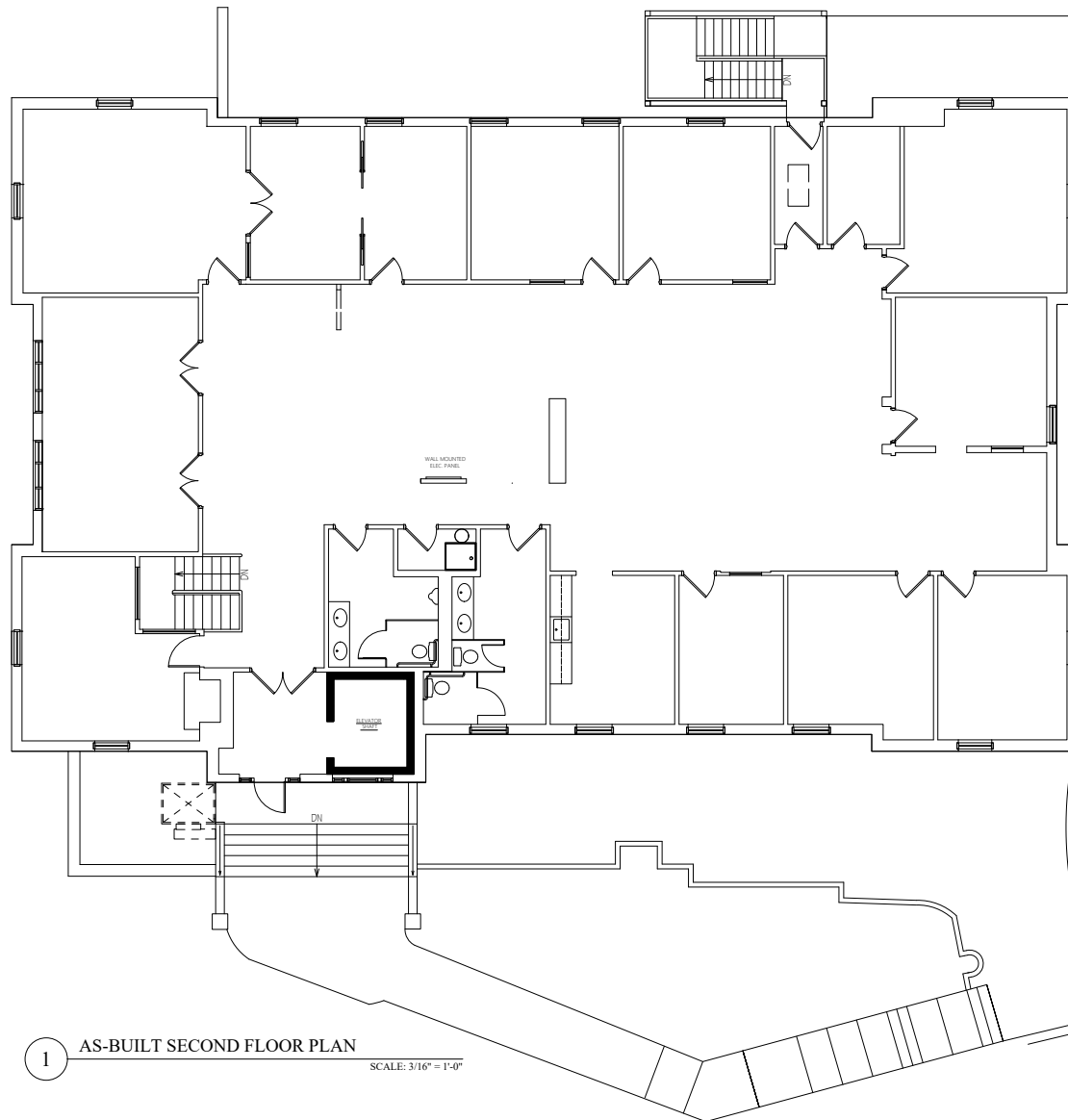
DIVISIBLE FLOOR PLAN

- GENERAL NOTES:
- ALL DIMENSIONS SHOWN +/-
 - VERIFY ALL WALL SIZES IN FIELD
 - VERIFY ALL STRUCTURE IN FIELD
 - WINDOW & DOOR SIZES NOMINAL
 - VERIFY STAIR SYSTEM IN THE FIELD
 - VERIFY DOOR & WINDOW JAMBS IN FIELD
 - SCOPE WAS DIRECTED TO BE A PARTIAL MEASURE
 - ANY DIMENSION NOT SHOWN TO BE VERIFIED IN FIELD
 - EXIST PDPS WERE CONVERTED TO USE AS BACKGROUNDS
 - ADJUSTMENTS TO EXIST PLANS BASED ON OBSERVATIONS
 - NOTE: THE BUILDING FOOTPRINT HAS NOT YET BEEN VERIFIED

CAD NOTE: DIMENSIONS ON DEPOINTS HAVE BEEN VERIFIED. HOWEVER, ADJACENT AREAS HAVE NOT BEEN AND ARE TO BE ASSUMED INACCURATE. FOOTPRINT HAS NOT BEEN VERIFIED.



AS-BUILT FLOOR PLAN



1

AS-BUILT SECOND FLOOR PLAN

SCALE: 3/16" = 1'-0"

LOCAL BIRDSEYE



JOHN'S HOPKINS
PAVILLION III

JOHN'S HOPKINS
PAVILLION I

JOHN'S HOPKINS
PAVILLION II

Greenspring Station
STONE MILL BAKERY
FRANCESCA'S BRIDAL
JOHN'S HOPKINS COMMUNITY PHYSICIANS
TARK'S GRILL

THE MARYLAND
PEDIATRIC GROUP

LabCorp
Laboratory Corporation of America

UNITED STATES
POSTAL SERVICE

CHASE

JOEY CHU
GREEN SPRING, MD

M&T Bank

FALLS ROAD 20,602 AADT

GREENSPRING
VALLEY ROAD
12,061 AADT

LOCAL BIRDSEYE



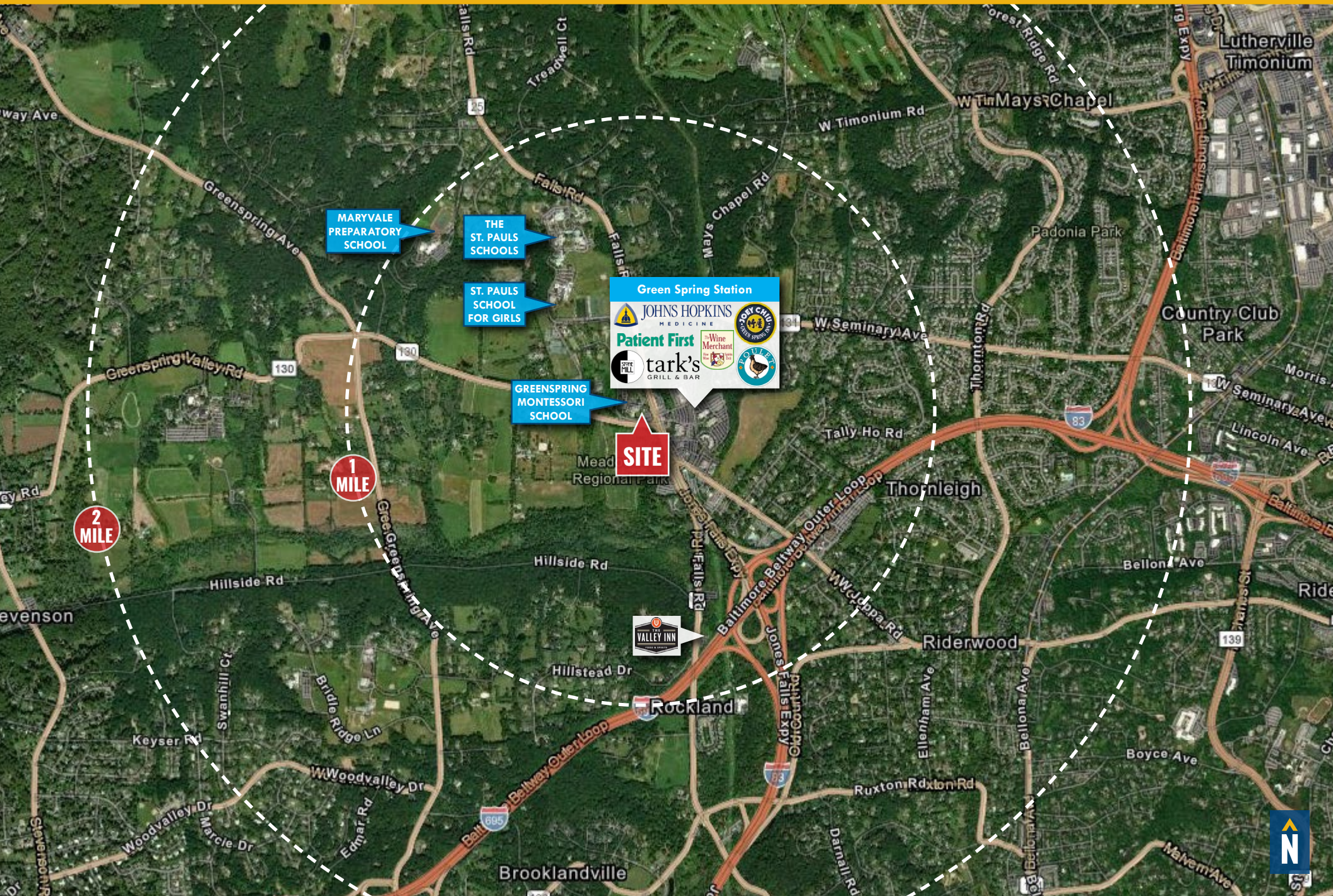
2ND FLOOR
DIRECT
ACCESS

FALLS ROAD 20,602 AADT

GREENSPRING VALLEY ROAD 12,061 AADT



LOCAL TRADE AREA



DEMOGRAPHICS

2023

RADIUS:

1 MILE

3 MILES

5 MILES

RESIDENTIAL POPULATION



934

22,858

95,532

DAYTIME POPULATION



3,811

56,425

239,215

AVERAGE HOUSEHOLD INCOME



\$243,016

\$186,806

\$149,713

NUMBER OF HOUSEHOLDS



634

19,853

77,179

MEDIAN AGE

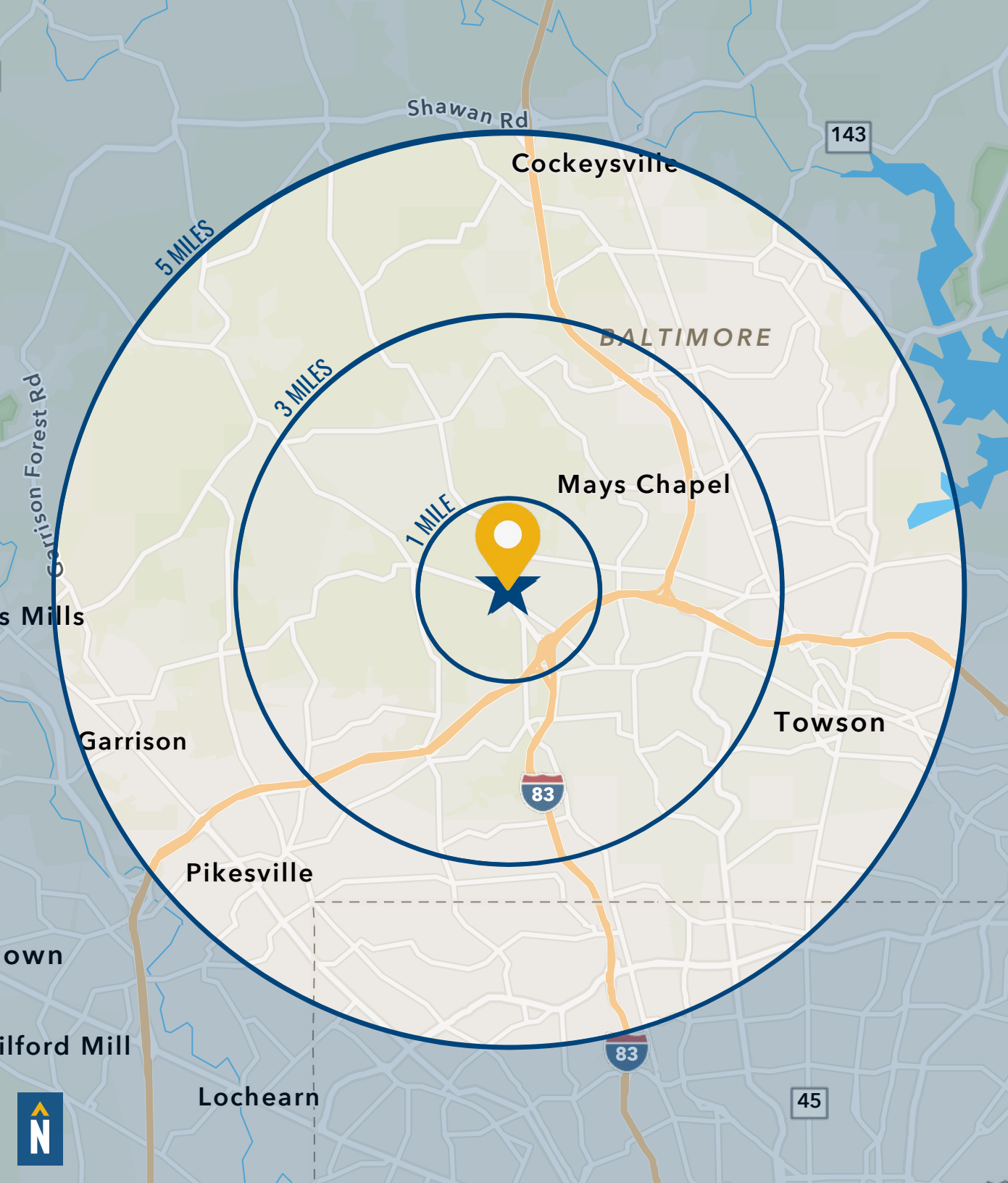


52.4

49.7

42.3

FULL DEMOS REPORT



FOR MORE INFO CONTACT:



MATT MUELLER

SENIOR VICE PRESIDENT & PRINCIPAL

410.494.6658

MMUELLER@mackenziecommercial.com



HENSON FORD

VICE PRESIDENT

410.494.6657

HFORD@mackenziecommercial.com



JOE BRADLEY

SENIOR VICE PRESIDENT & PRINCIPAL

410.494.4892

JBRADLEY@mackenziecommercial.com



MACKENZIE

COMMERCIAL REAL ESTATE SERVICES, LLC

410-821-8585

2328 W. Joppa Road, Suite 200
Lutherville, MD 21093

OFFICES IN:

ANNAPOLIS

BALTIMORE

BEL AIR

COLUMBIA

LUTHERVILLE

www.MACKENZIECOMMERCIAL.com



VISIT **PROPERTY PAGE** FOR MORE INFORMATION.

No warranty or representation, expressed or implied, is made as to the accuracy of the information contained herein, and same is submitted subject to errors, omissions, change of price, rental or other conditions, withdrawal without notice, and to any specific listing conditions imposed by our principals.