



# AIRPORT SQUARE

1099 WINTERSON ROAD | LINTHICUM HEIGHTS, MARYLAND 21090

FOR  
LEASE



**MACKENZIE**

COMMERCIAL REAL ESTATE SERVICES, LLC

# PROPERTY OVERVIEW

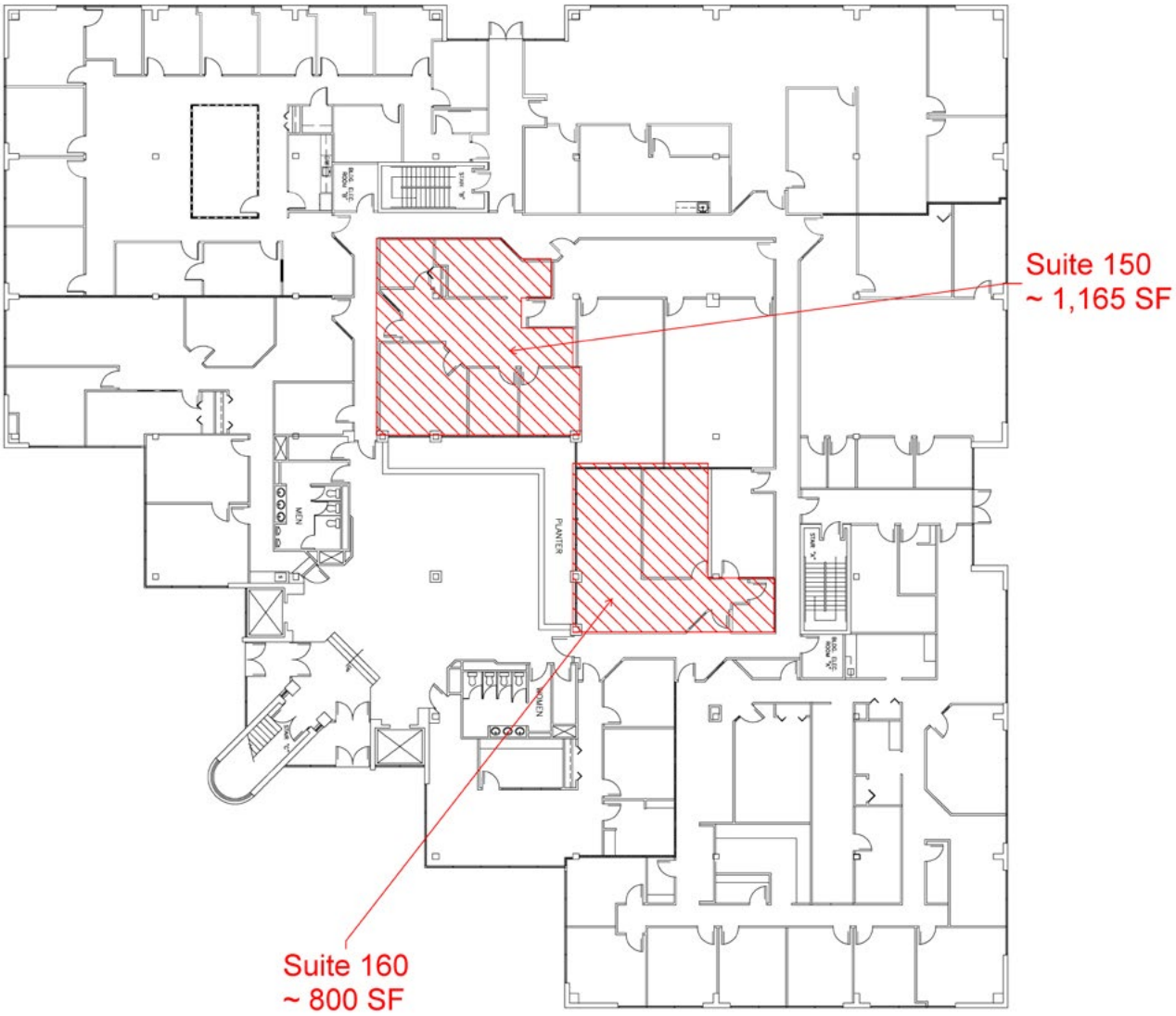
## HIGHLIGHTS:

- Great location just off of Rte 295 & 695 with easy access to Baltimore and Ft. Meade
- Newly renovated lobby and common areas
- 1,600 SF fitness center for tenant's use
- Plenty of parking- (250 spaces)
- Abundant close amenities

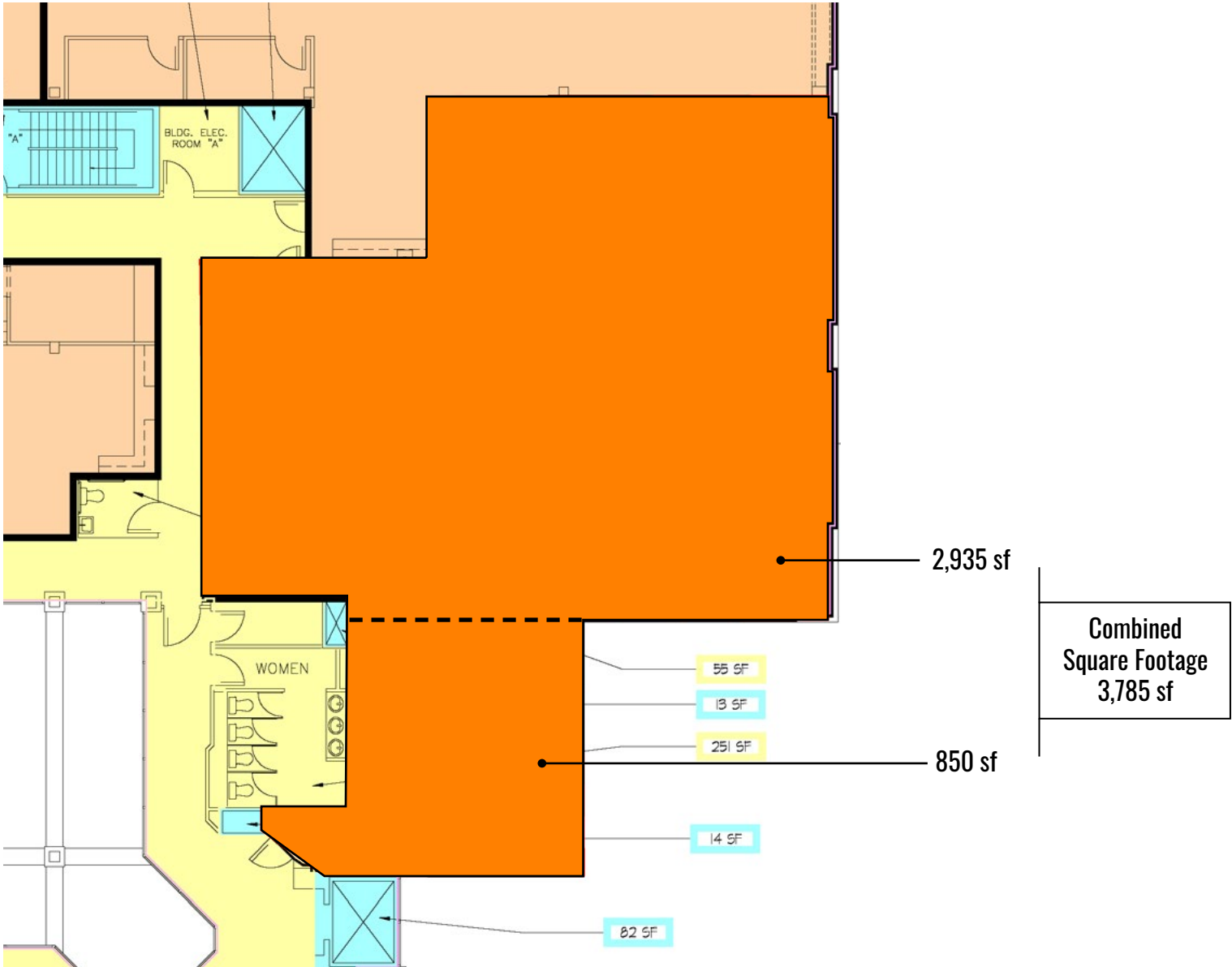
BUILDING SIZE:	72,535 SF ±
AVAILABLE:	SUITE 150: 1,165 SF SUITE 160: 800 SF SUITE 280: 3,785 SF ± (DIVISIBLE TO 850 & 2,935 SF)
YEAR BUILT:	1983
STORIES:	3
PARKING:	3.62/1,000 SF (250 SPACES)
ZONING:	W1 (INDUSTRIAL PARK)
RENTAL RATE:	\$17.95/SF, FS



# FLOOR PLAN: 1ST FLOOR



# FLOOR PLAN: SUITE 280



# LOCAL BIRDSEYE

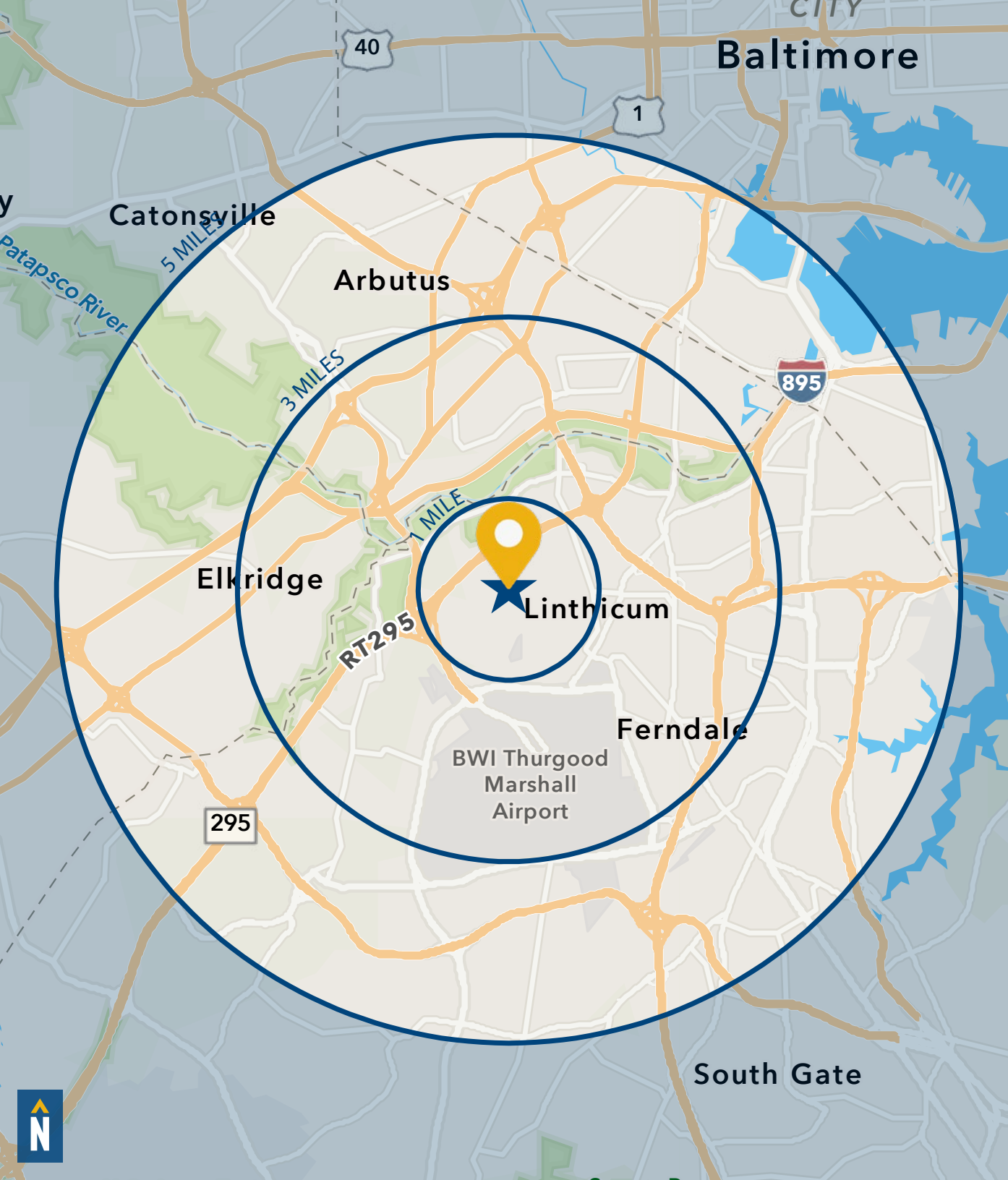


# LOCAL TRADE AREA



# INTERIOR PHOTOS





# DEMOGRAPHICS

2023

RADIUS: **1 MILE** **3 MILES** **5 MILES**

## RESIDENTIAL POPULATION



2,059	25,975	102,437
-------	--------	---------

## DAYTIME POPULATION



9,954	70,987	243,983
-------	--------	---------

## AVERAGE HOUSEHOLD INCOME



\$136,993	\$118,018	\$105,167
-----------	-----------	-----------

## NUMBER OF HOUSEHOLDS



1,997	20,258	75,661
-------	--------	--------

## MEDIAN AGE



46.6	39.5	38.1
------	------	------

[FULL DEMOS REPORT](#)





# FOR MORE INFO **CONTACT:**



## **DENNIS BOYLE**

*SENIOR VICE PRESIDENT*

**443.798.9339**

**DBOYLE@mackenziecommercial.com**



## **ADAM NACHLAS**

*SENIOR VICE PRESIDENT*

**443.798.9343**

**ANACHLAS@mackenziecommercial.com**



## **GRAHAM SEVY**

*REAL ESTATE ADVISOR*

**410.830.1399**

**GSEVY@mackenziecommercial.com**



# **MACKENZIE**

COMMERCIAL REAL ESTATE SERVICES, LLC

**410-872-0400**

10175 Little Patuxent Parkway, Suite 902

Columbia, MD 21044

OFFICES IN:

**ANNAPOLIS**

**BALTIMORE**

**BEL AIR**

**COLUMBIA**

**LUTHERVILLE**



VISIT **PROPERTY PAGE** FOR MORE INFORMATION.

**www.MACKENZIECOMMERCIAL.com**

*No warranty or representation, expressed or implied, is made as to the accuracy of the information contained herein, and same is submitted subject to errors, omissions, change of price, rental or other conditions, withdrawal without notice, and to any specific listing conditions imposed by our principals.*