

FOR LEASE

Baltimore County, MD

11125 PEPPER ROAD (OFFICE OR FLEX)

HUNT VALLEY, MARYLAND 21031

AVAILABLE

7,850 sf ±

RENTAL RATE

Negotiable

DOCK DOORS

1

CEILING HEIGHT

16' clear to bottom of joist

PARKING

Free, ample on site

HIGHLIGHTS

- ▶ Zoning ML-IM: Permits broad variety of uses including office; medical; tech and limited retail.
- ▶ Can accommodate office or flex uses
- ▶ Onsite Property Management
- ▶ Easy access to I-83
- ▶ Adjacent to light rail
- ▶ Close proximity to hotels, banking, restaurants and Hunt Valley Towne Centre



SPACE READY TO BUILD TO SUIT YOUR NEEDS



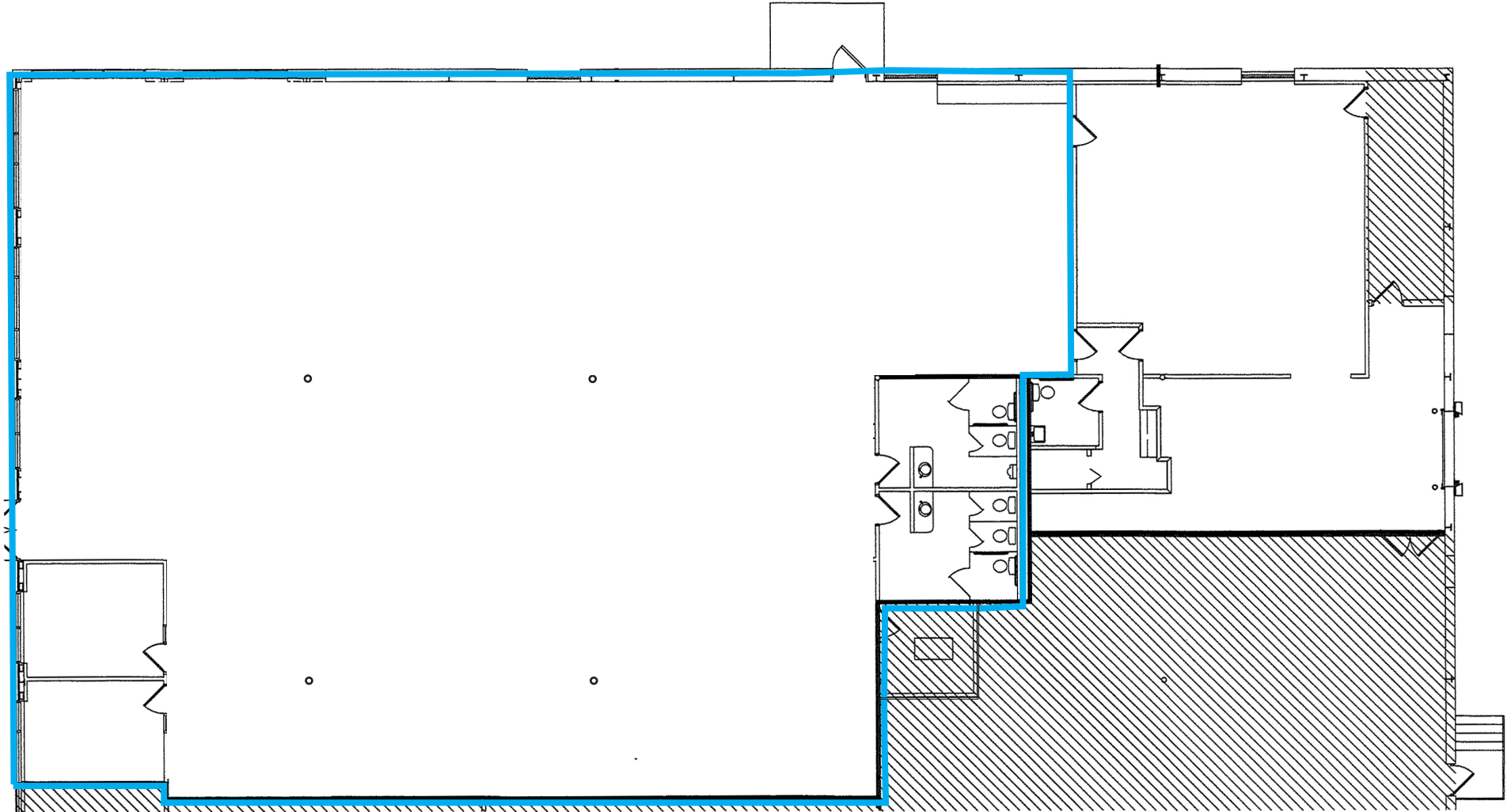
FOR LEASE



Baltimore County, MD

FLOOR PLAN

11125 PEPPER ROAD | HUNT VALLEY, MARYLAND 21031



Daniel A. Hudak | Senior Vice President/Principal
☎ 443.573.3205 ✉ dhudak@mackenziecommercial.com

Mackenzie Commercial Real Estate Services, LLC • 410-821-8585 • 2328 W. Joppa Road, Suite 200 | Lutherville-Timonium, Maryland 21093 • www.MACKENZIECOMMERCIAL.com

Frederick W. Hearn | Senior Vice President
☎ 410.494.4868 ✉ fhearn@mackenziecommercial.com