



# 112-116 HAYS STREET

BEL AIR, MARYLAND 21014

FOR  
LEASE



**MACKENZIE**

COMMERCIAL REAL ESTATE SERVICES, LLC

# PROPERTY OVERVIEW

## HIGHLIGHTS:

- Class A office located in the heart of downtown Bel Air, featuring two large suites
- Ample, free on-site parking
- Easily accessible via Route 924 and minutes from Route 1
- Nearby dining, retail, banking, and personal service amenities



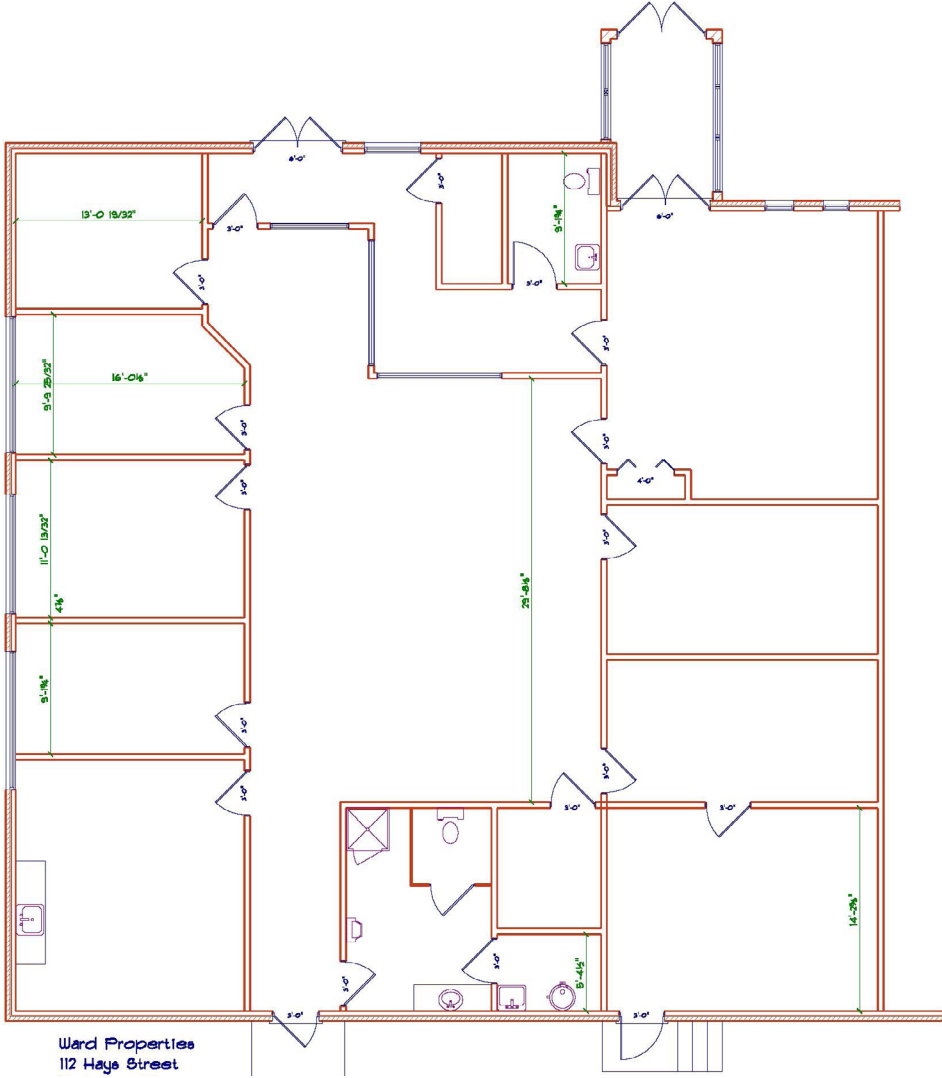
AVAILABLE:	3,754 SF ±
BUILDING SIZE:	8,409 SF ±
OCCUPANCY:	IMMEDIATE
PARKING:	4.37/1,000 SF
ZONING:	B2A
RENTAL RATE:	\$20.00/SF, NNN



GOOGLE STREET VIEW

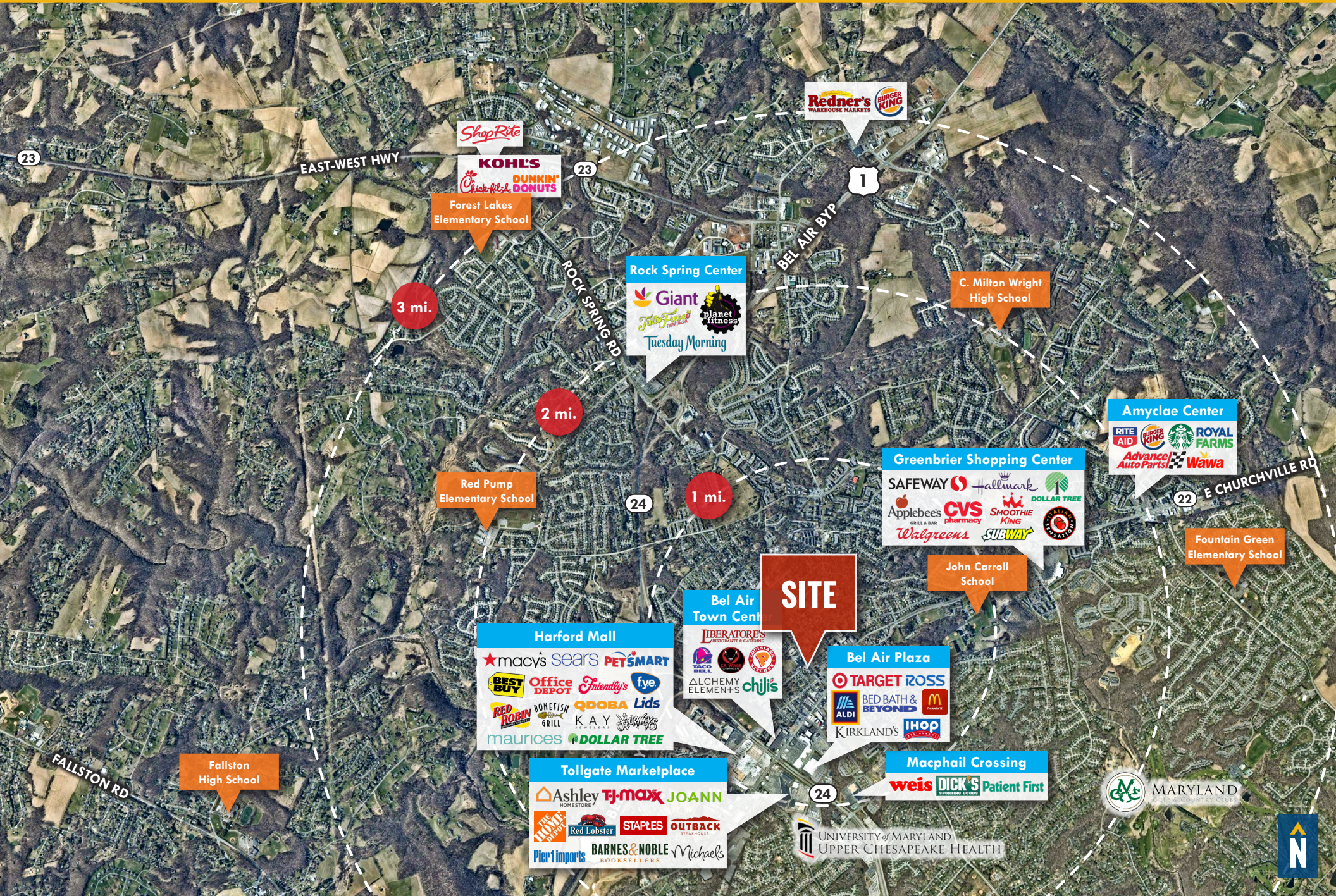


# FLOOR PLAN



**3,754 SF ±**  
AVAILABLE

# MARKET AERIAL



# DEMOGRAPHICS

2025

RADIUS:

1 MILE

3 MILES

5 MILES

## RESIDENTIAL POPULATION



9,349

71,464

115,472

## DAYTIME POPULATION



21,113

74,851

110,566

## AVERAGE HOUSEHOLD INCOME



\$103,537

\$143,134

\$144,104

## NUMBER OF HOUSEHOLDS



4,231

27,240

43,518

## MEDIAN AGE

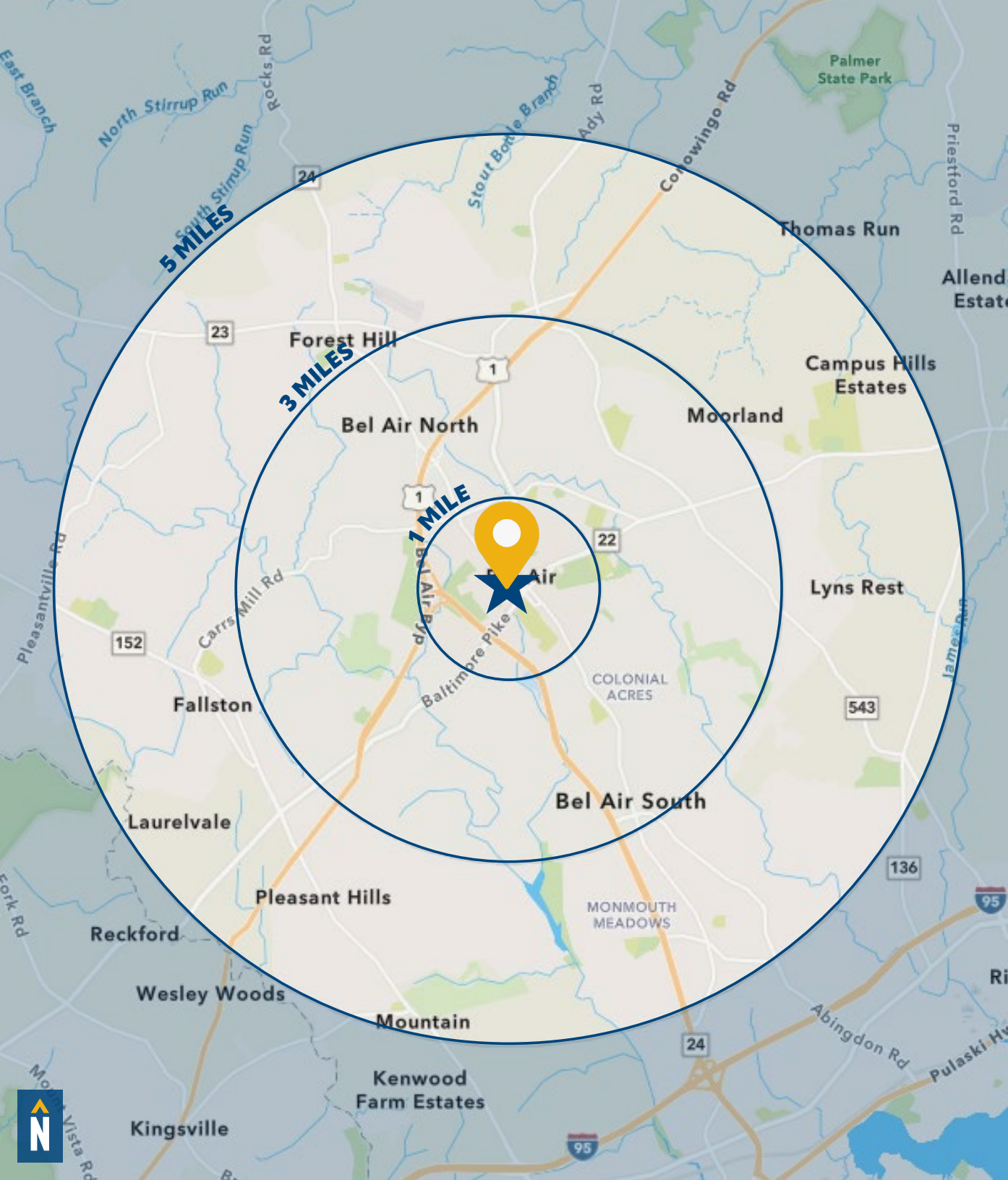


42.8

42.0

41.5

[FULL DEMOS REPORT](#)



# FOR MORE INFO **CONTACT:**



## **TOM MOTTLEY**

*SENIOR VICE PRESIDENT & PRINCIPAL*

**443.573.3217**

**TMOTTLEY@mackenziecommercial.com**



## **BEETLE SMITH**

*SENIOR VICE PRESIDENT*

**443.573.3219**

**BSMITH@mackenziecommercial.com**



## **JOHN MICHAEL**

*REAL ESTATE ADVISOR*

**443.573.3207**

**JMICHAEL@mackenziecommercial.com**



# **MACKENZIE**

COMMERCIAL REAL ESTATE SERVICES, LLC

**410-879-1900**

**3465 Box Hill Corporate Center Drive, Suite F  
Abingdon, MD 21009**

OFFICES IN: ANNAPOLIS, MD BALTIMORE, MD **BEL AIR, MD** COLUMBIA, MD LUTHERVILLE, MD CHARLOTTESVILLE, VA

**[www.MACKENZIECOMMERCIAL.com](http://www.MACKENZIECOMMERCIAL.com)**



VISIT **PROPERTY PAGE** FOR MORE INFORMATION.

*No warranty or representation, expressed or implied, is made as to the accuracy of the information contained herein, and same is submitted subject to errors, omissions, change of price, rental or other conditions, withdrawal without notice, and to any specific listing conditions imposed by our principals.*