

# FOR LEASE

Harford County, Maryland

# FLEX OFFICE SPACE AVAILABLE

WILLIAM PACA INDUSTRIAL PARK | 1309-1311 CONTINENTAL DRIVE | ABINGDON, MARYLAND 21009

## AVAILABLE

5,484 - 13,948 sf of flex office space

## OCCUPANCY

Immediate

## TERM

3 - 5 Years

## PARKING RATIO

4 : 1,000 sf

## RENTAL RATE

Warehouse: \$11.00 sf NNN

Office: \$14.00 sf NNN

## AVAILABLE SUITES

1309 Suite A	8,727 sf
1309 Suite K	9,634 sf
1309 Suite M	6,485 sf
1309 Suite N	7,885 sf
1311 Suite A	12,888 sf (office)
1311 Suite G	5,484 sf (office)

## HIGHLIGHTS

- ▶ Suite signage opportunity with Rt. 7 visibility
- ▶ Wonderful window line
- ▶ Efficient layouts with offices, conference room, and open areas
- ▶ Signalized intersection for easy "in and out"
- ▶ Office and warehouse potential
- ▶ Excellent value!

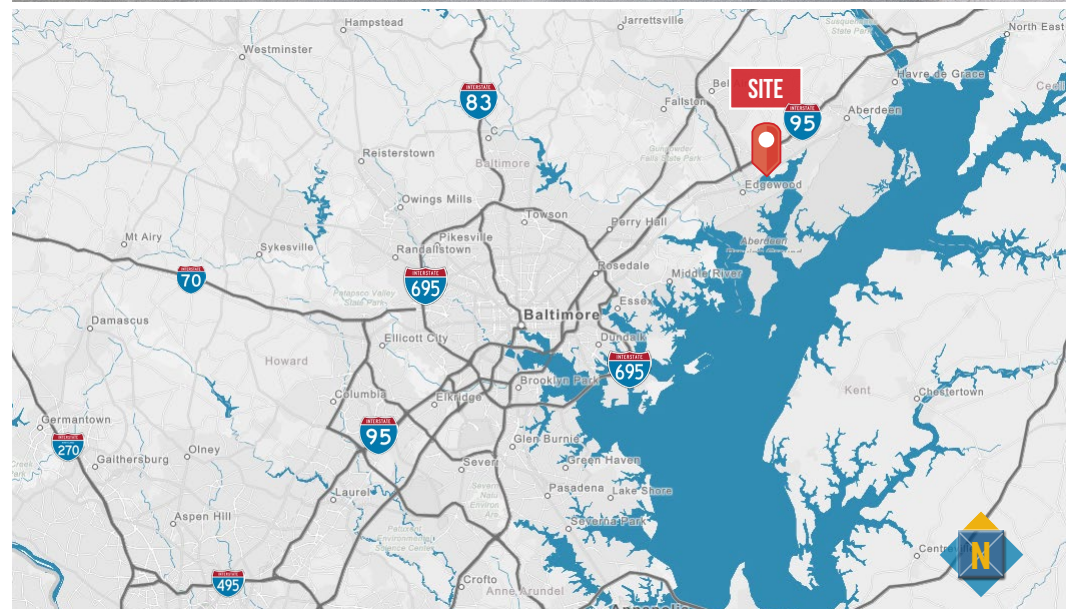
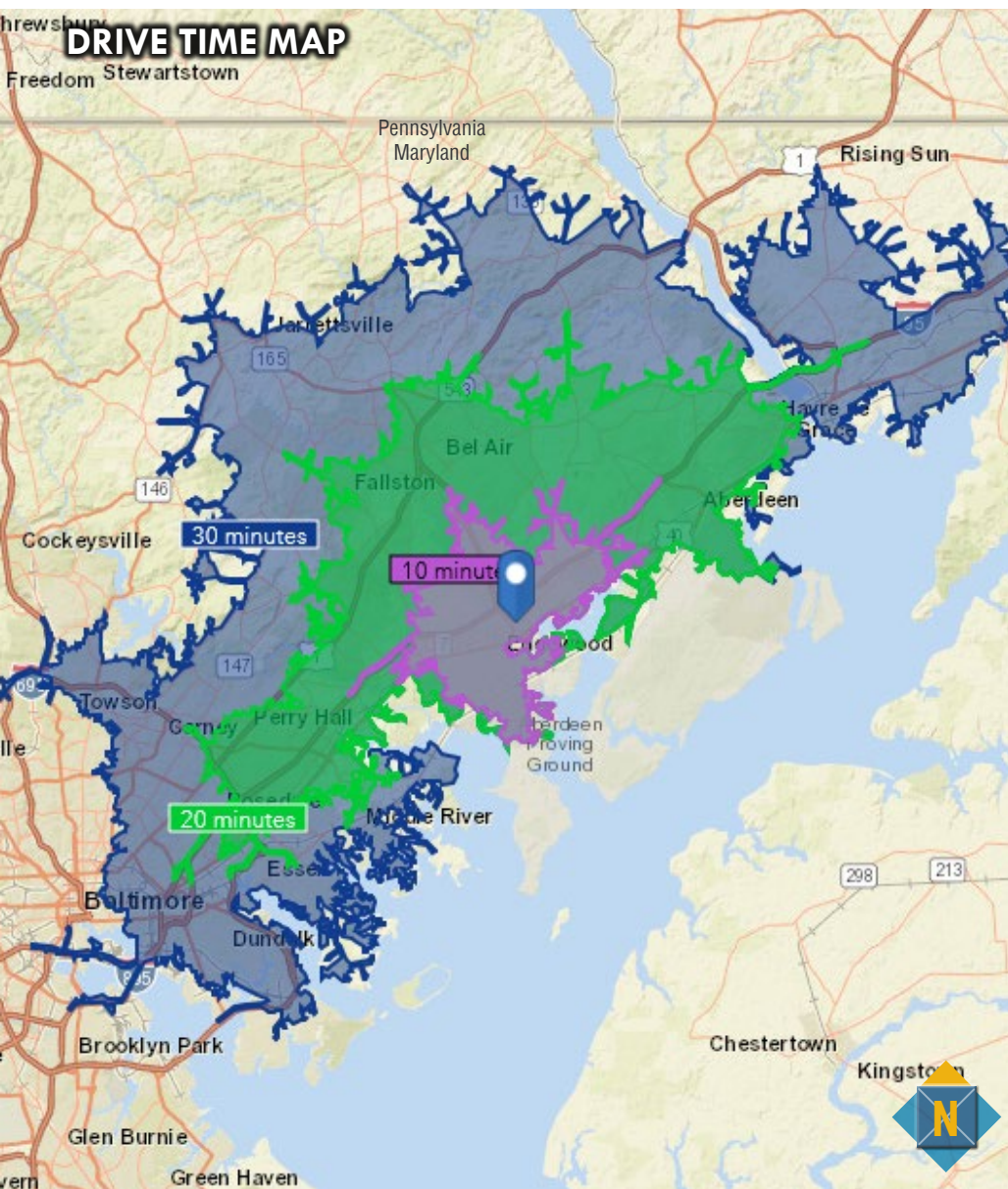


# FOR LEASE

Harford County, Maryland

# LOCATION/DRIVE TIME/STREET VIEW

WILLIAM PACA INDUSTRIAL PARK | 1309-1311 CONTINENTAL DRIVE | ABINGDON, MARYLAND 21009

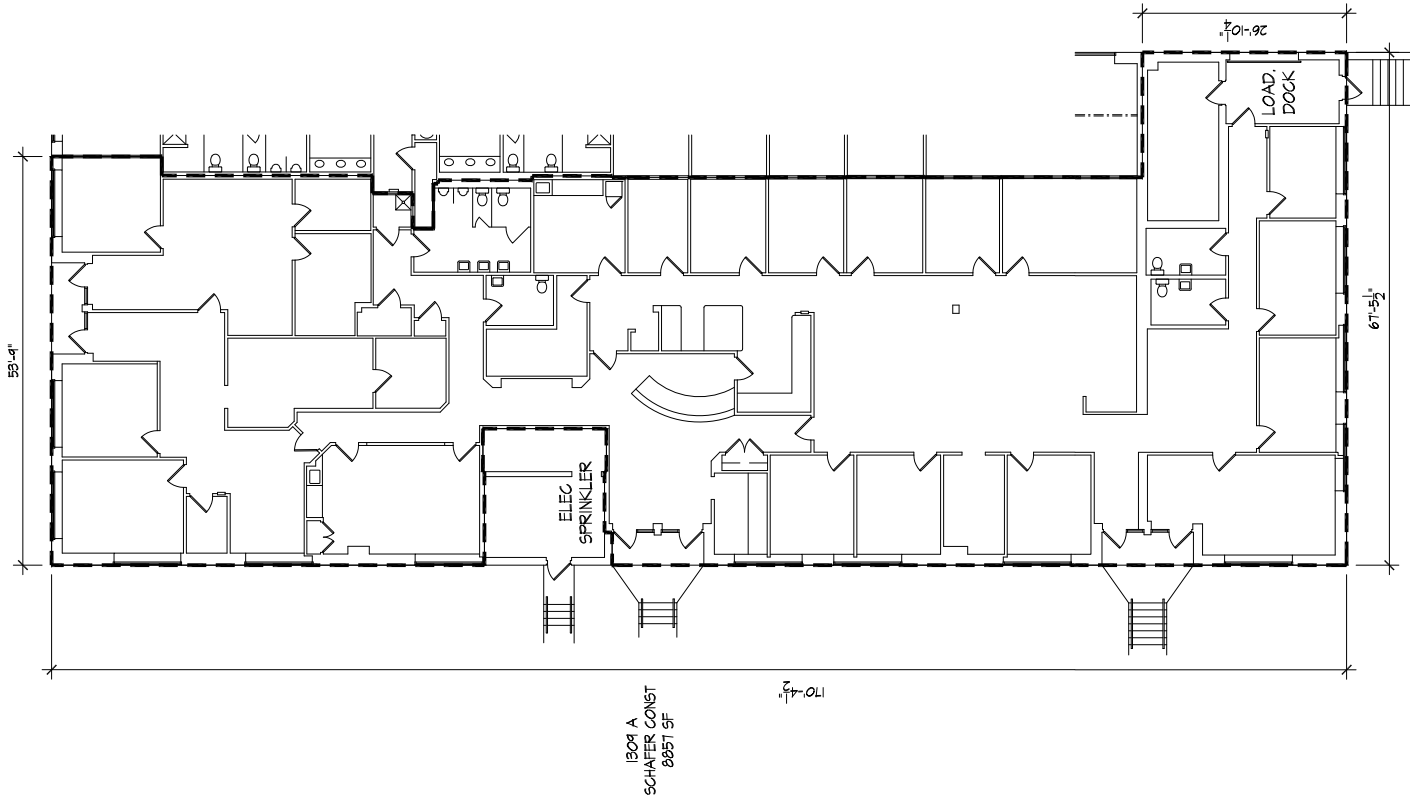


# FOR LEASE

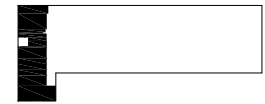
Harford County, Maryland

## FLOOR PLAN: 1309 - SUITE A

WILLIAM PACA INDUSTRIAL PARK | 1309-1311 CONTINENTAL DRIVE | ABINGDON, MARYLAND 21009



KEY MAP



1309 A  
PACA

ABINGDON, MD

DATE: 9.15.13  
DRAWING:  
13024  
SCALE:  
1" = 20'  
SHT SIZE:  
8,5 x 11

1309A

410 . 466 . 1034  
Architectural  
Building  
Surveys



Trisun  
Financial  
Group

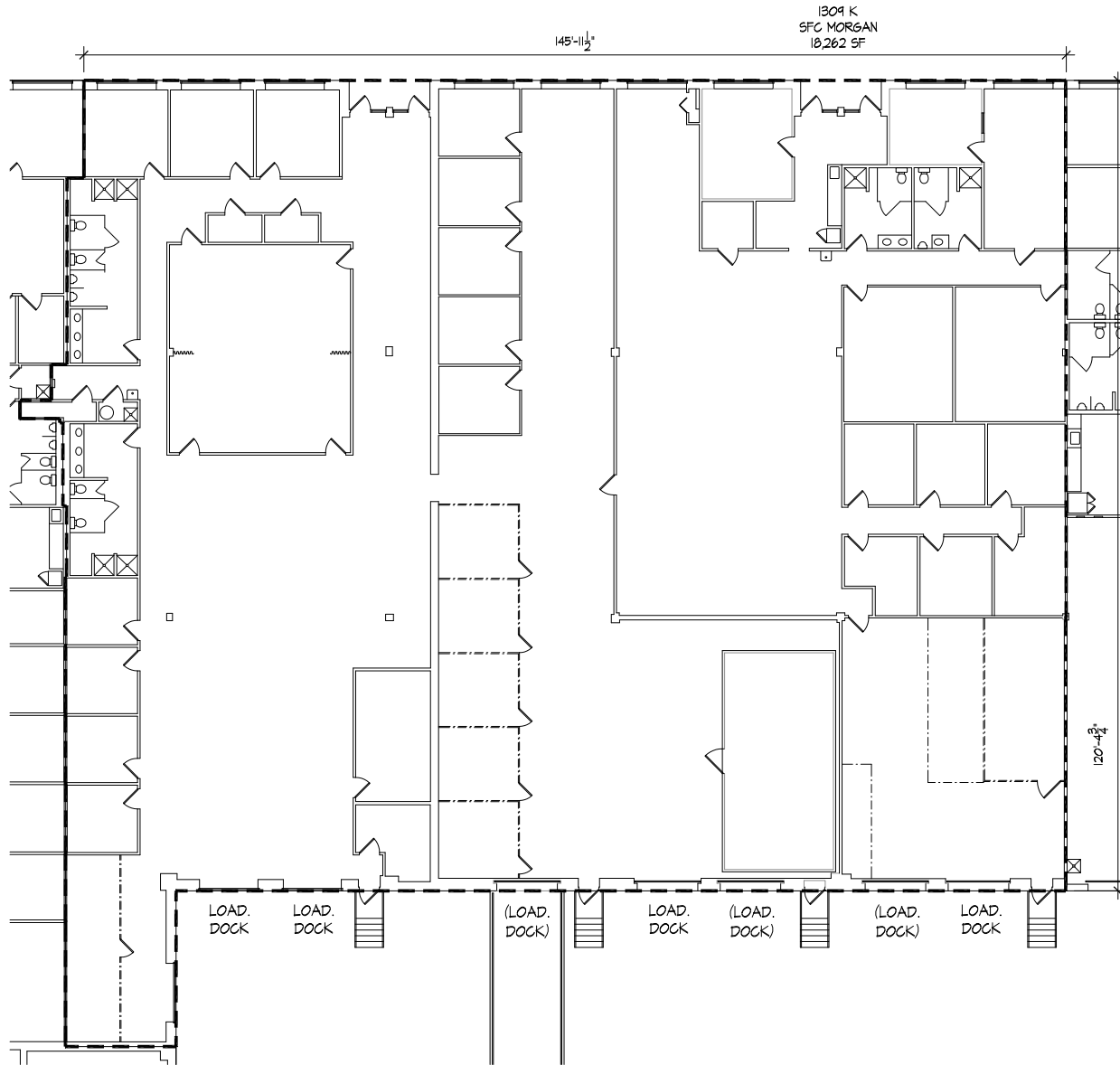
410 . 653 . 5550

# FOR LEASE

Harford County, Maryland

# FLOOR PLAN: 1309 - SUITE K

WILLIAM PACA INDUSTRIAL PARK | 1309-1311 CONTINENTAL DRIVE | ABINGDON, MARYLAND 21009



KEY MAP

0 10' 20'

**1309 K**  
**PACA**  
ABINGDON, MD

DATE: 9.15.13  
DRAWING: 13024  
SCALE: 1" = 20'  
SHT SIZE: 8.5 x 11

**1309K**

**Architectural Building Surveys**  
410.466.1034

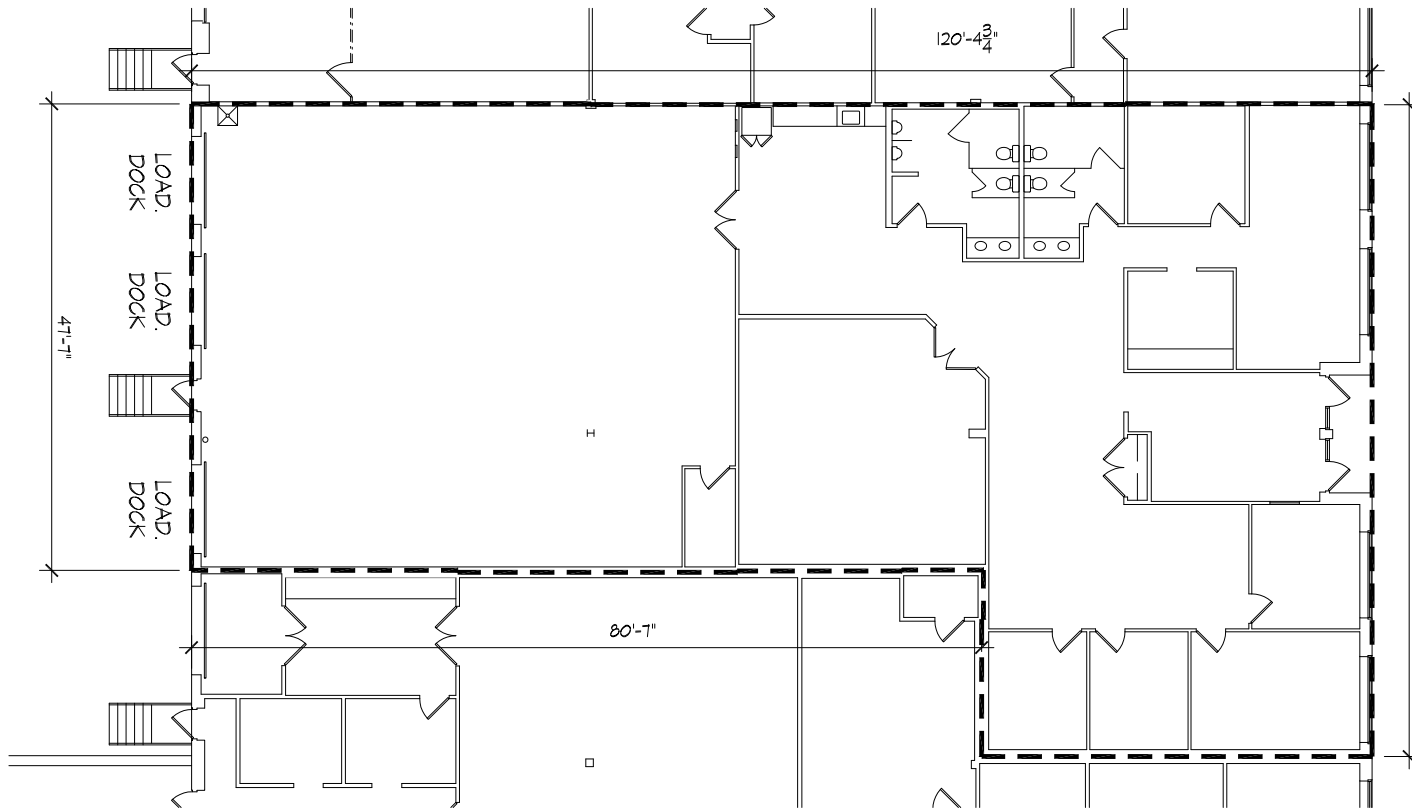
**Trisun Financial Group**  
410.653.5550

# FOR LEASE

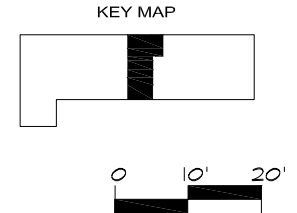
Harford County, Maryland

## FLOOR PLAN: 1309 - SUITE M

WILLIAM PACA INDUSTRIAL PARK | 1309-1311 CONTINENTAL DRIVE | ABINGDON, MARYLAND 21009



1309 M  
VETERAN CORPUS  
6405 SF



1309 M  
PACA  
ABINGDON, MD

DATE: 9.15.13  
DRAWING: 13024  
SCALE: 1" = 20'  
SHT SIZE: 8.5 x 11

1309M

410.466.1034  
Architectural  
Building  
Surveys

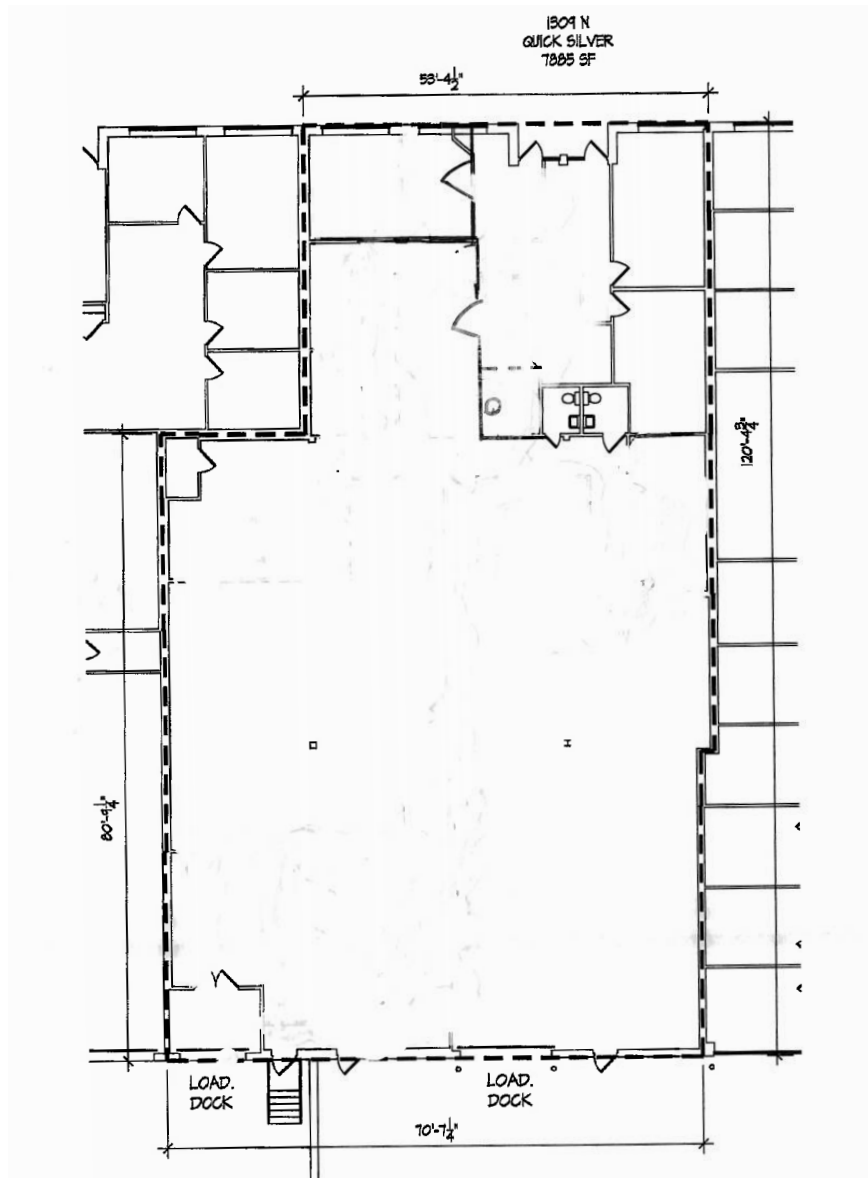
Trisun  
Financial  
Group  
410.653.5550

# FOR LEASE

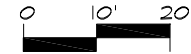
Harford County, Maryland

## FLOOR PLAN: 1309 - SUITE N

WILLIAM PACA INDUSTRIAL PARK | 1309-1311 CONTINENTAL DRIVE | ABINGDON, MARYLAND 21009



KEY MAP



1309 N  
PACA

ABINGDON, MD

DATE: 9.15.13  
DRAWING:  
13024  
SCALE:  
1" = 20'  
SHT SIZE:  
8.5 x 11

1309N

410.466.1034  
Architectural  
Building  
Surveys

Trisun  
Financial  
Group

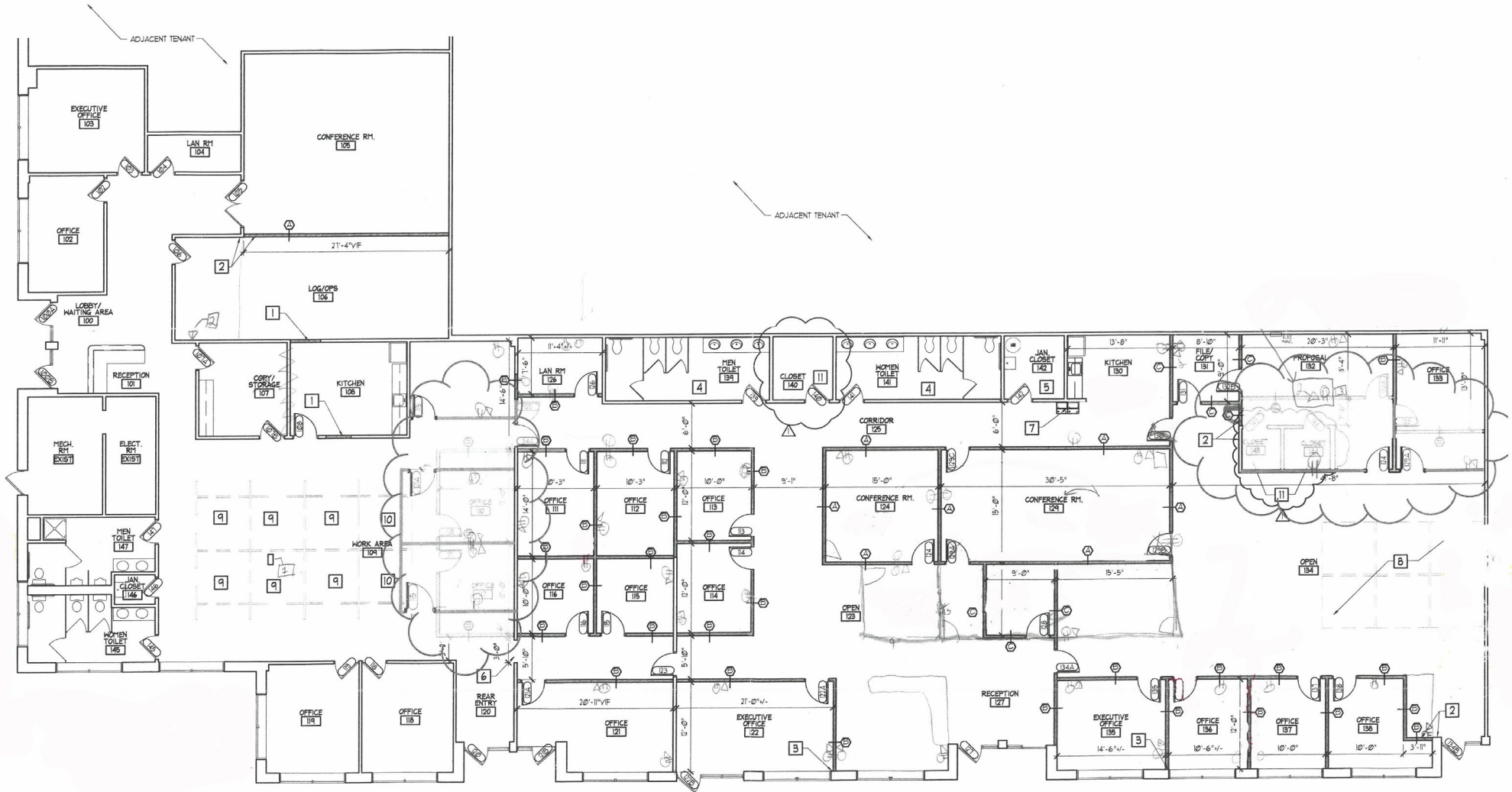
410.653.5550

# FOR LEASE

Harford County, Maryland

# FLOOR PLAN: 1311 - SUITE A

WILLIAM PACA INDUSTRIAL PARK | 1309-1311 CONTINENTAL DRIVE | ABINGDON, MARYLAND 21009



# FOR LEASE



Harford County, Maryland

## FLOOR PLAN: 1311 - SUITE G

WILLIAM PACA INDUSTRIAL PARK | 1309-1311 CONTINENTAL DRIVE | ABINGDON, MARYLAND 21009





# FOR LEASE

Harford County, Maryland

# TRADE AREA

WILLIAM PACA INDUSTRIAL PARK | 1309-1311 CONTINENTAL DRIVE | ABINGDON, MARYLAND 21009

