



# CREIGHTON CENTER

1400 FRONT AVENUE | LUTHERVILLE, MARYLAND, 21093

FOR  
LEASE



**MACKENZIE**

COMMERCIAL REAL ESTATE SERVICES, LLC

# PROPERTY OVERVIEW

## HIGHLIGHTS:

- Campus-like setting
- Operable windows
- Convenient to I-695 and I-83
- High speed internet access
- Abundant free surface parking
- Nearby Amenities include: Dining, Retail, Banking, Personal Services

### AVAILABLE:

SUITE 200: 4,184 SF  
SUITE 302: 900 - 3,347 SF  
STORAGE IN SUITE 1S: 500 SF

### TERM:

NEGOTIABLE

### RENTAL RATE:

\$22.50/SF, FULL SERVICE  
STORAGE: \$10.00/SF



**BROKER**

**BONUS\* \$2/SF**

\* Bonus in addition to standard full market commission on a 5-10 year lease.

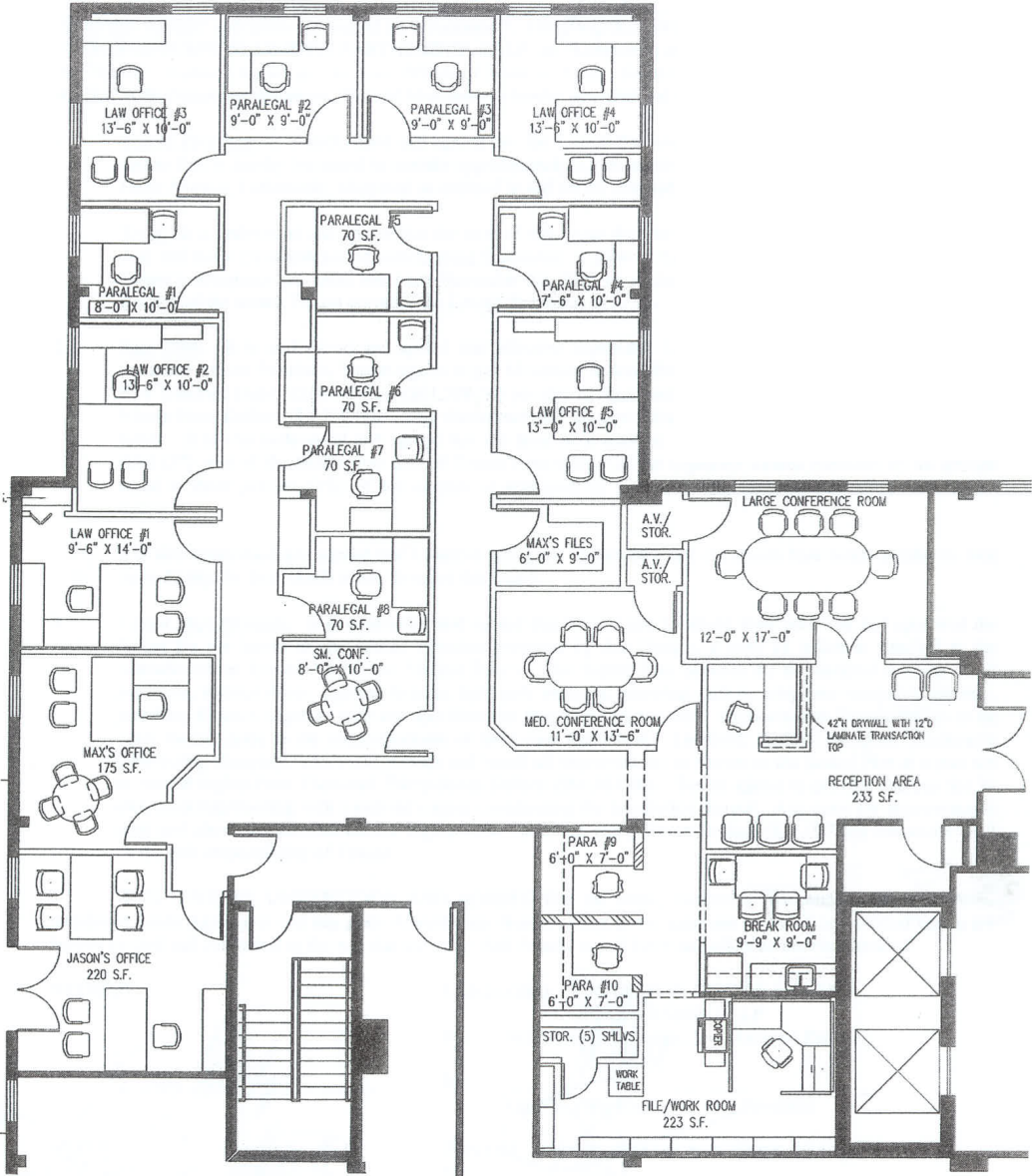
**NOW THROUGH 3/31/2024**

**\$50 FOR QUALIFIED SHOWINGS**

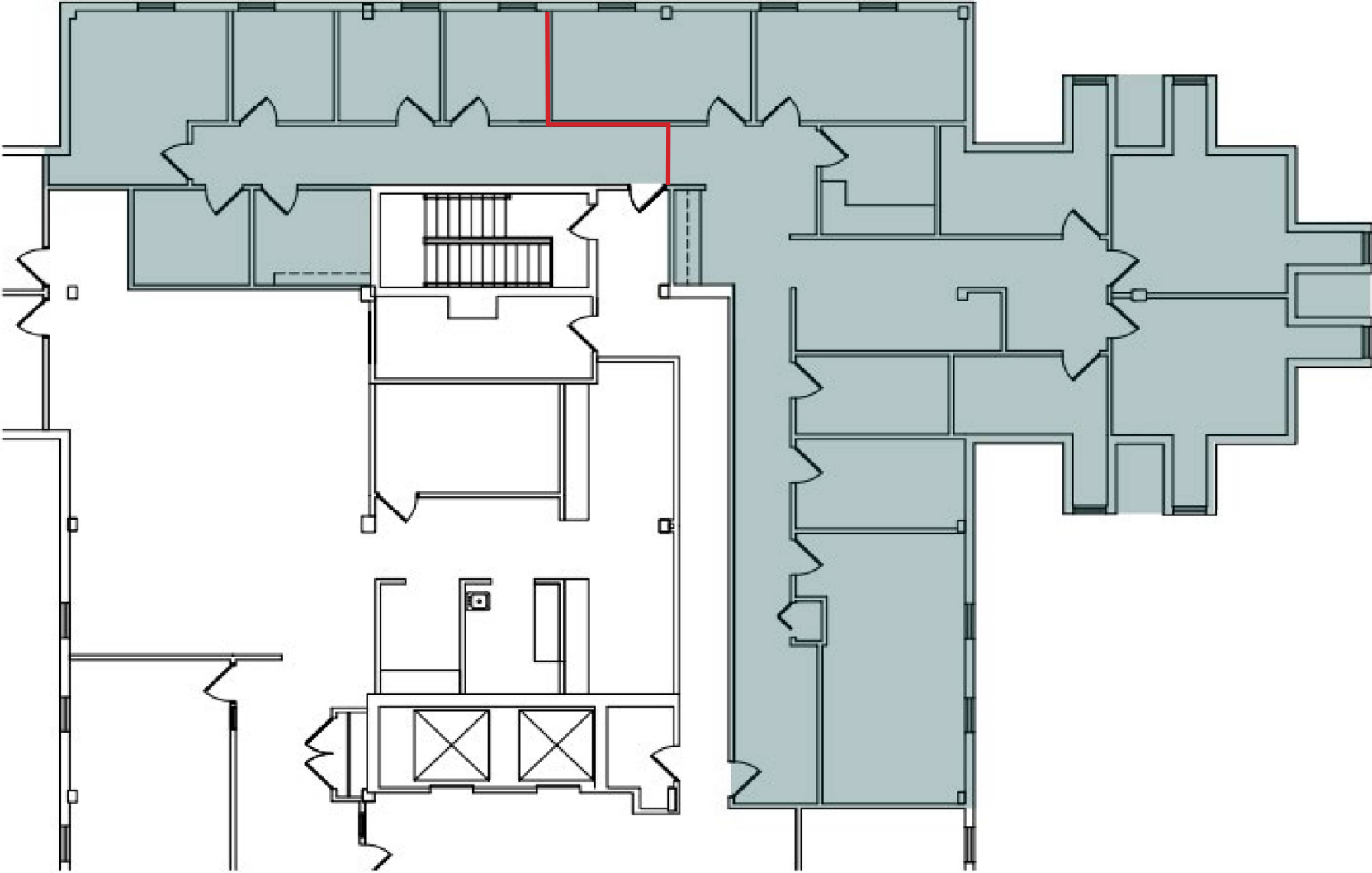


GOOGLE STREET VIEW

# FLOOR PLAN - 2ND FLOOR



# FLOOR PLAN - SUITE 302



# LOCAL BIRDSEYE



# FOR MORE INFO **CONTACT:**



## **MATT MUELLER**

*SENIOR VICE PRESIDENT & PRINCIPAL*

**410.494.6658**

**MMUELLER@mackenziecommercial.com**



## **JOE BRADLEY**

*SENIOR VICE PRESIDENT & PRINCIPAL*

**410.494.4892**

**JBRADLEY@mackenziecommercial.com**



## **HENSON FORD**

*VICE PRESIDENT*

**410.494.6657**

**HFORD@mackenziecommercial.com**



VISIT **PROPERTY PAGE** FOR MORE INFORMATION.



# **MACKENZIE**

COMMERCIAL REAL ESTATE SERVICES, LLC

**410-821-8585**  
2328 W. Joppa Road, Suite 200  
Lutherville, MD 21093

OFFICES IN: **ANNAPOLIS** **BALTIMORE** **BEL AIR** **COLUMBIA** **LUTHERVILLE**

[www.MACKENZIECOMMERCIAL.com](http://www.MACKENZIECOMMERCIAL.com)

*No warranty or representation, expressed or implied, is made as to the accuracy of the information contained herein, and same is submitted subject to errors, omissions, change of price, rental or other conditions, withdrawal without notice, and to any specific listing conditions imposed by our principals.*