



151 AIRPORT DRIVE

WESTMINSTER, MARYLAND 21157

FOR
LEASE



MACKENZIE

COMMERCIAL REAL ESTATE SERVICES, LLC

PROPERTY OVERVIEW

HIGHLIGHTS:

- Flexible loading with Dock and Drive-Ins – Including 2,000 SF Drive-Thru w 16' x 24' Doors
- Excess parking/land
- LED Lighting
- Heavy Power
- Existing Racking
- Gas Heat
- Full drive circulation around property

BUILDING SIZE:

83,351 SF ±
(6,800 SF ± OFFICE)

LOT SIZE:

5.90 ACRES ±

CLEAR HEIGHT:

24' - 40'

COLUMNS:

40' X 40'

DOCKS:

(3) 10' X 10' W/ PIT LEVELERS
DOCK PLATFORM W/ 3 POSITIONS

DRIVE-INS:

(2) 16' X 24' DOORS
(1) 16' X 16' DOOR
COVERED DRIVE-THROUGH

ZONING:

IR

RENTAL RATE:

\$8.95/ SF NNN



GOOGLE STREET VIEW



AERIAL



-  DRIVE-IN
-  DOCK



[illegible]

ADDITIONAL PHOTOS



LOCAL BIRDSEYE



 **CARROLL COUNTY**
REGIONAL AIRPORT
MARYLAND

 **WFX**
KELLER AUTOMOTIVE

SITE

*Subsurface
Technologies
Inc.*

 **LAI International**

 **Capital
Electric**

 **ADVACO**

AIRPORT DR

 **R.E. MICHEL
COMPANY**

 **MILBY
COMPANY**

 **GLAMOUR
MOVING & STORAGE**

 **ELI**
Electronic Laboratories Inc.

 **PRO
BINS**

 **SERVPRO**

 **APPLE PLUMBING
HEATING & AC**

 **Clean Sweep
ENTERPRISES, INC.**

 **KNORR-BREMSE**

 **CALDERA
MANUFACTURING GROUP**

 **HEXAGON
PURUS**

 **R CONVERSIONS**

WallyBags

 **WES Pharma Inc**

 **STROUSE**

MAGNA WAY

 **Jmco
SUBWAY**

 **TRI-COUNTY
ROOFING
& SHEET METAL**

 **Atlantic Tractor**



TRADE AREA

DRIVING DISTANCE TO:

97 0.2 MILES
1 MIN. DRIVE

140 1.3 MILES
3 MIN. DRIVE

**INTERSTATE
795** 14.0 MILES
20 MIN. DRIVE

BWI
BALTIMORE-WASHINGTON
INTERNATIONAL
AIRPORT
38.7 MILES
45 MIN. DRIVE

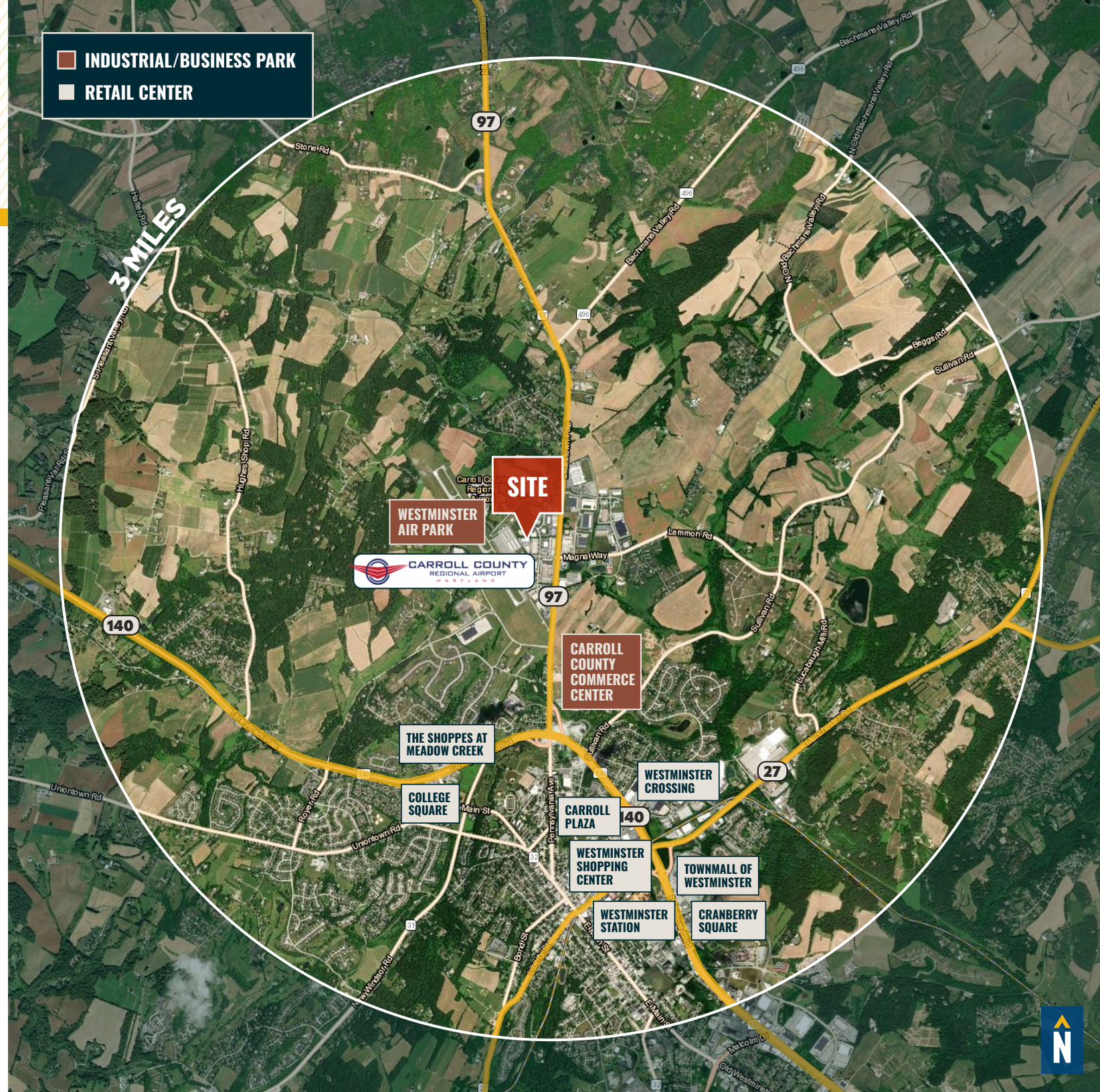
PORT OF BALTIMORE
1706
Helen Delich Bentley
39.6 MILES
50 MIN. DRIVE
(FAIRFIELD
MARINE TERMINAL)

BALTIMORE, MD 38.1 MILES
45 MIN.

WASHINGTON, DC 67.6 MILES
1 HR. 30 MIN.

PHILADELPHIA, PA 132.0 MILES
2 HRS. 15 MIN.

RICHMOND, VA 163.0 MILES
3 HRS. 0 MIN.



FOR MORE INFO **CONTACT:**



KETCH SECOR

SENIOR VICE PRESIDENT

410.409.0990

KSECOR@mackenziecommercial.com



DENNIS BOYLE, SIOR

SENIOR VICE PRESIDENT

443.798.9339

DBOYLE@mackenziecommercial.com



GRAHAM SEVY

REAL ESTATE ADVISOR

410.830.1399

GSEVY@mackenziecommercial.com



VISIT **PROPERTY PAGE** FOR MORE INFORMATION.



MACKENZIE

COMMERCIAL REAL ESTATE SERVICES, LLC

443-573-3200

**111 S. Calvert Street
Baltimore, MD 21202**

OFFICES IN: ANNAPOLIS, MD **BALTIMORE, MD** BEL AIR, MD COLUMBIA, MD LUTHERVILLE, MD CHARLOTTESVILLE, VA

www.MACKENZIECOMMERCIAL.com

No warranty or representation, expressed or implied, is made as to the accuracy of the information contained herein, and same is submitted subject to errors, omissions, change of price, rental or other conditions, withdrawal without notice, and to any specific listing conditions imposed by our principals.