

FOR SALE



Harford County, Maryland

INDUSTRIAL LAND SITE

1514 EDGEWOOD ROAD | EDGEWOOD, MARYLAND 21040

BUILDING SIZE

2,032 ± SF

LOT SIZE

0.48 ± Acres

ZONING

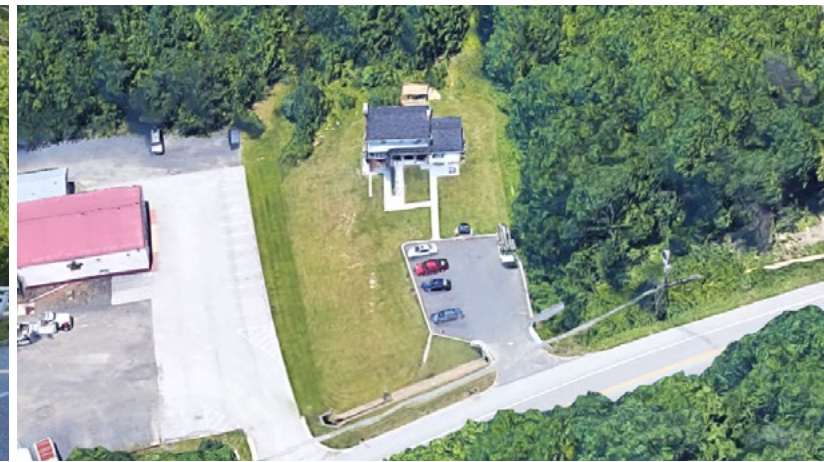
GI (General Industrial)

SALE PRICE

\$400,000

HIGHLIGHTS

- ▶ Excellent access to I-95
- ▶ 2,032 sf residential structure that could be converted to office space
- ▶ Paved Parking Lot
- ▶ Utilities on-site



STREET VIEW



MACKENZIE

COMMERCIAL REAL ESTATE SERVICES, LLC

Patrick Smith, SIOR | Vice President

☎ 410.494.4866 ✉ psmith@mackenziecommercial.com

Mackenzie Commercial Real Estate Services, LLC • 410-821-8585 • 2328 W. Joppa Road, Suite 200 | Lutherville-Timonium, Maryland 21093 • www.MACKENZIECOMMERCIAL.com

Chris Boland | Senior Real Estate Advisor

☎ 410.494.6644 ✉ cboland@mackenziecommercial.com

FOR SALE

Harford County, Maryland

TRADE AREA

1514 EDGEWOOD ROAD | EDGEWOOD, MARYLAND 21040





PATRICK SMITH, SIOR

VICE PRESIDENT

MACKENZIE COMMERCIAL REAL ESTATE SERVICES, LLC

410.494.4866

PSMITH@MACKENZIECOMMERCIAL.COM



CHRIS BOLAND

SENIOR REAL ESTATE ADVISOR

MACKENZIE COMMERCIAL REAL ESTATE SERVICES, LLC

410.494.6644

CBOLAND@MACKENZIECOMMERCIAL.COM

MacKenzie Commercial Real Estate Services, LLC • 410-821-8585 • 2328 W. Joppa Road, Suite 200 | Lutherville, Maryland 21093 • www.MACKENZIECOMMERCIAL.com

No warranty or representation, expressed or implied, is made as to the accuracy of the information contained herein, and same is submitted subject to errors, omissions, change of price, rental or other conditions, withdrawal without notice, and to any specific listing conditions imposed by our principals.