



2ND FLOOR OFFICE SPACE

1615 ROBIN CIRCLE | FOREST HILL, MARYLAND 21050

FOR
LEASE



MACKENZIE

COMMERCIAL REAL ESTATE SERVICES, LLC

PROPERTY OVERVIEW

HIGHLIGHTS:

- 2,500 SF ± 2nd floor walk-up office space
- Easy access to Routes 1, 23 and 24
- Ample surface parking
- Short drive to Downtown Bel Air
- Nearby amenities include Wawa, Walgreens, 7-Eleven, Wendy's, Waffle House, Giant Food, Planet Fitness, Chipotle, Royal Farms, McDonald's, Chick-fil-A, ShopRite, Redner's, The Hickory Lodge

AVAILABLE:

SUITE A-2: 2,500 SF ± (2ND FLOOR)

BUILDING SIZE:

39,367 SF ±

YEAR BUILT:

1973 (RENOVATED 1985)

PARKING:

50 SURFACE SPACES (1.20/1,000 SF)

ZONING:

G1 (GENERAL INDUSTRIAL DISTRICT)

RENTAL RATE:

\$2,000/MO., MODIFIED GROSS



GOOGLE STREET VIEW



AERIAL

ROBIN CIR

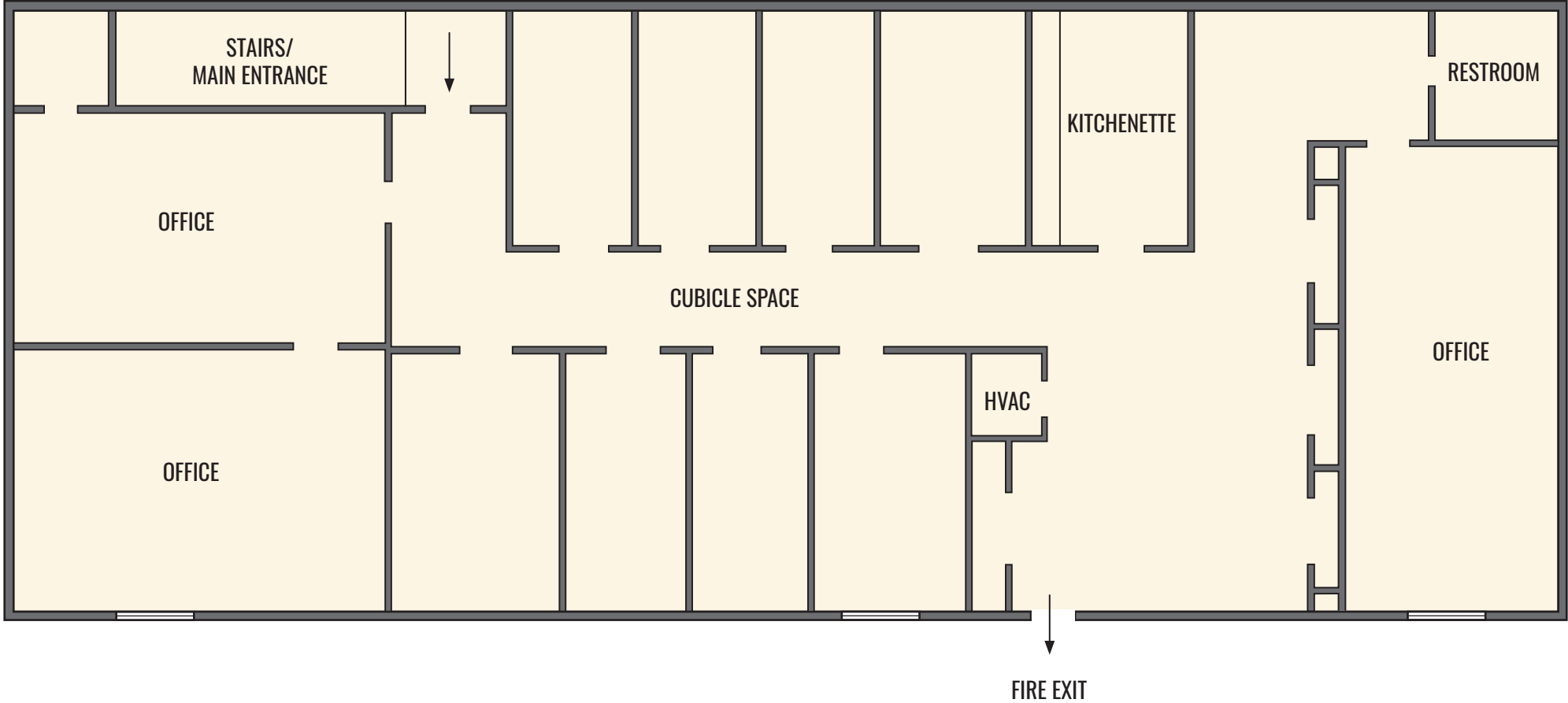
MELROSE LN

<p>2,500 SF ± SUITE A-2</p>				
--	---	--	---	---



FLOOR PLAN: SUITE A-2

2,500 SF



LOCAL MARKET AERIAL



FOR MORE INFO CONTACT:



MIKE RUOCCO

SENIOR VICE PRESIDENT & PRINCIPAL

410.494.4868

MRUOCCO@mackenziecommercial.com



PATRICK J. SMITH

REAL ESTATE ADVISOR

847.346.2701

PJSMITH@mackenziecommercial.com



MACKENZIE

COMMERCIAL REAL ESTATE SERVICES, LLC

410-821-8585

2328 W. Joppa Road, Suite 200
Lutherville, MD 21093

OFFICES IN:

ANNAPOLIS

BALTIMORE

BEL AIR

COLUMBIA

LUTHERVILLE

www.MACKENZIECOMMERCIAL.com



VISIT **PROPERTY PAGE** FOR MORE INFORMATION

No warranty or representation, expressed or implied, is made as to the accuracy of the information contained herein, and same is submitted subject to errors, omissions, change of price, rental or other conditions, withdrawal without notice, and to any specific listing conditions imposed by our principals.