

FOR SALE

Harford County, Maryland

1701 EMMORTON ROAD

BEL AIR, MARYLAND 21015

LOT SIZE

0.60 AC

ZONING

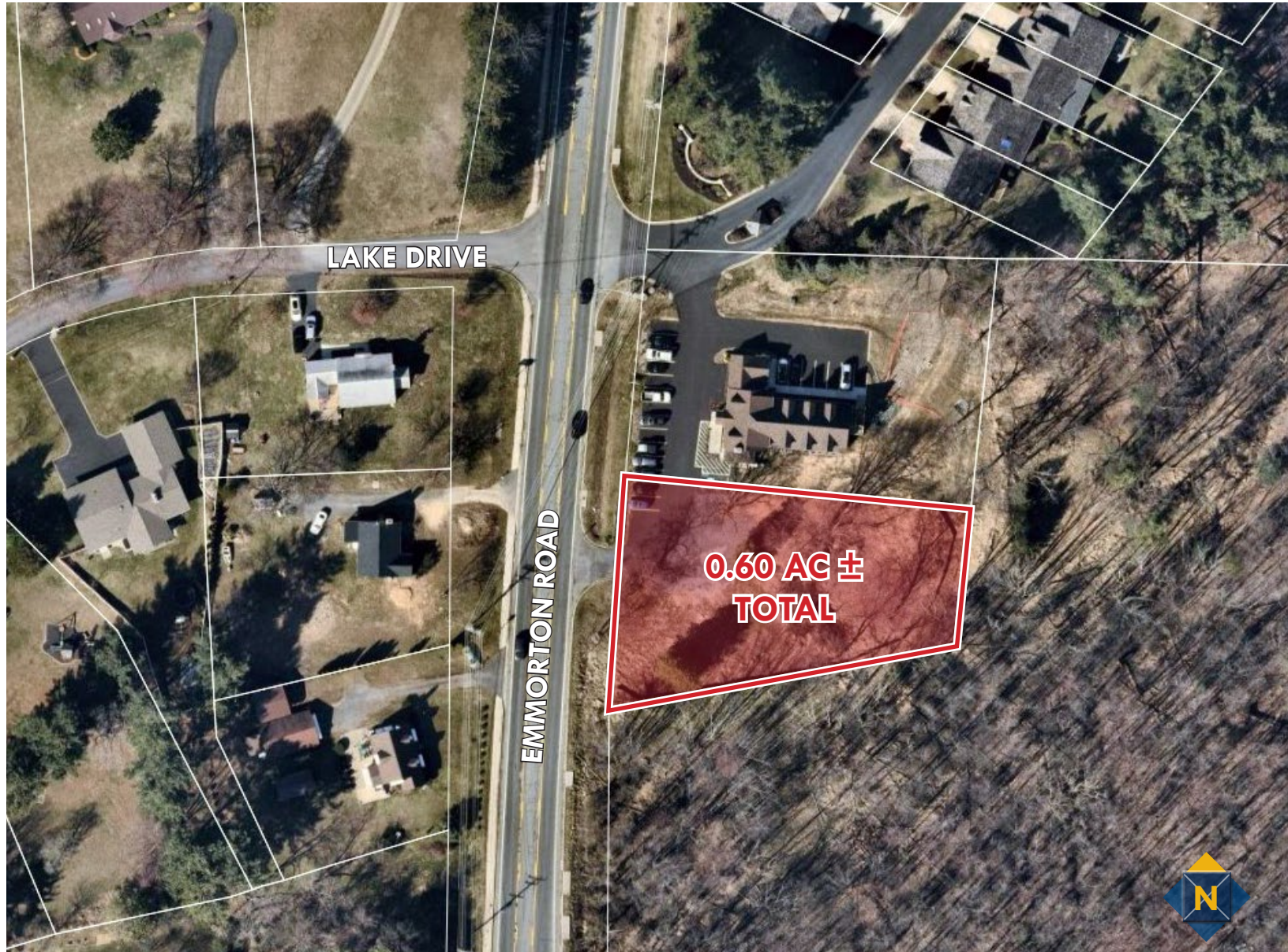
RO (Residential Office)

SALE PRICE

\$295,000

HIGHLIGHTS

- ▶ Located near signalized intersection of Route 924 and Patterson Mill Road
- ▶ RO zoning with medical special exception approval
- ▶ Nearby amenities include restaurants, banking, and retail
- ▶ Located in the heart of the Harford County office market



Tom Mottley | Senior Vice President

☎ 443.573.3217 ✉ tmottley@mackenziecommercial.com

MacKenzie Commercial Real Estate Services, LLC • 410-879-1900 • 3465 Box Hill Corporate Center Drive, Suite F | Abingdon, Maryland 21009 • www.MACKENZIECOMMERCIAL.com

Beetle Smith | Senior Vice President

☎ 443.573.3219 ✉ bsmith@mackenziecommercial.com

FOR SALE

Harford County, Maryland

SURROUNDING AMENITIES

1701 EMMORTON ROAD | BEL AIR, MARYLAND 21015

