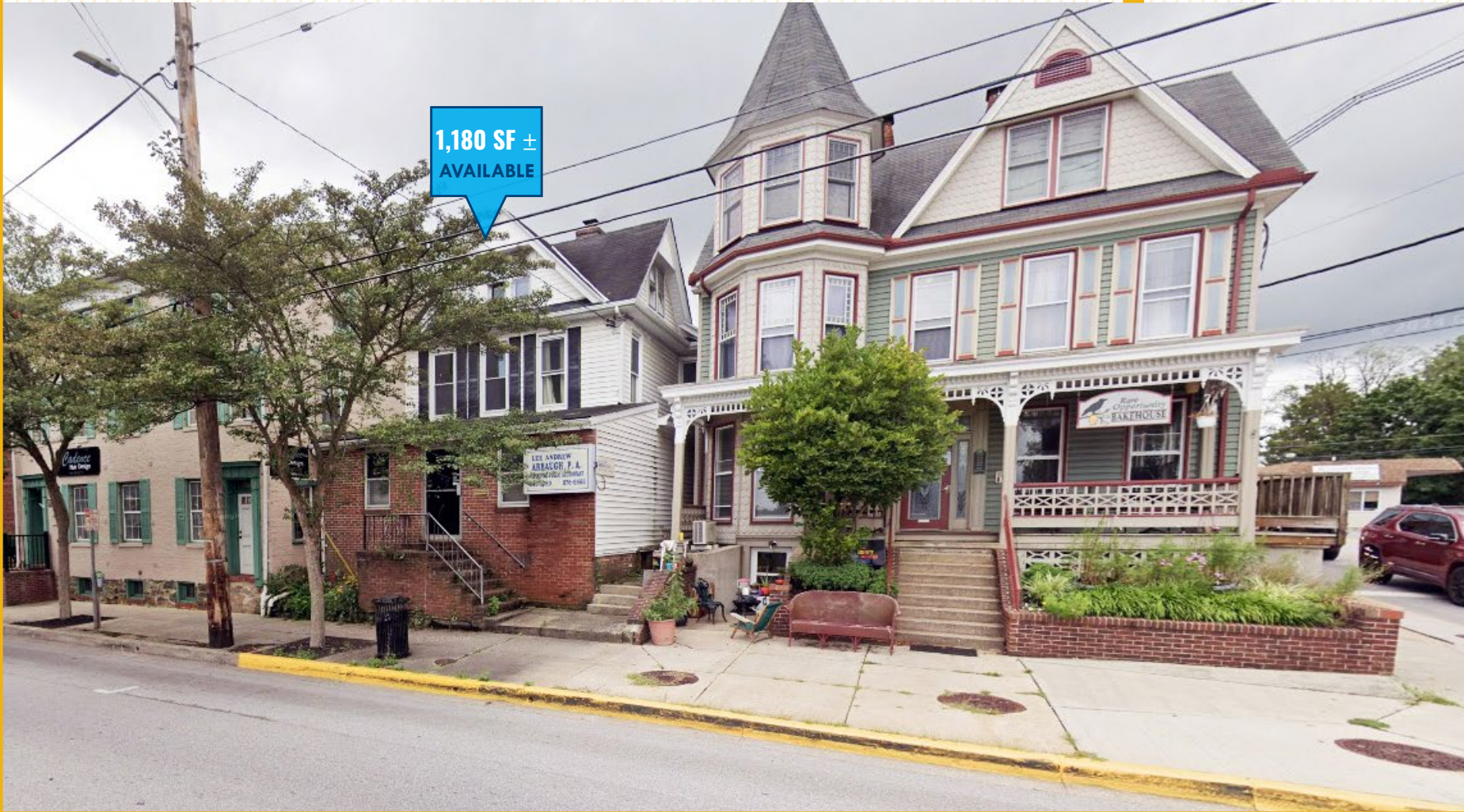




MAIN LEVEL OFFICE/RETAIL

174 EAST MAIN STREET | WESTMINSTER, MARYLAND 21157

FOR
LEASE



MACKENZIE

COMMERCIAL REAL ESTATE SERVICES, LLC

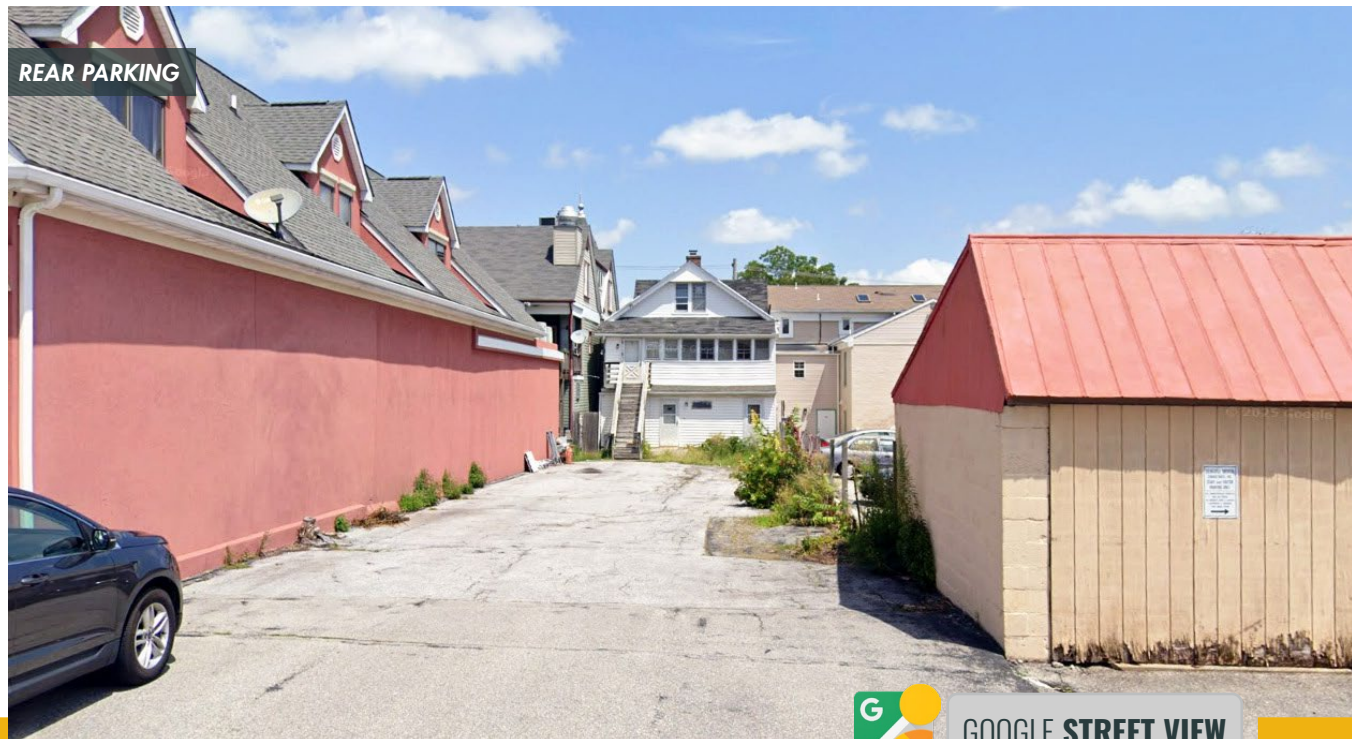
PROPERTY OVERVIEW

HIGHLIGHTS:

- 1,180 SF office/retail available
- Main level office with additional storage in unfinished lower level
- Private parking area in the rear
- Property is in the process of being completely renovated, tenant can choose layout and finishes



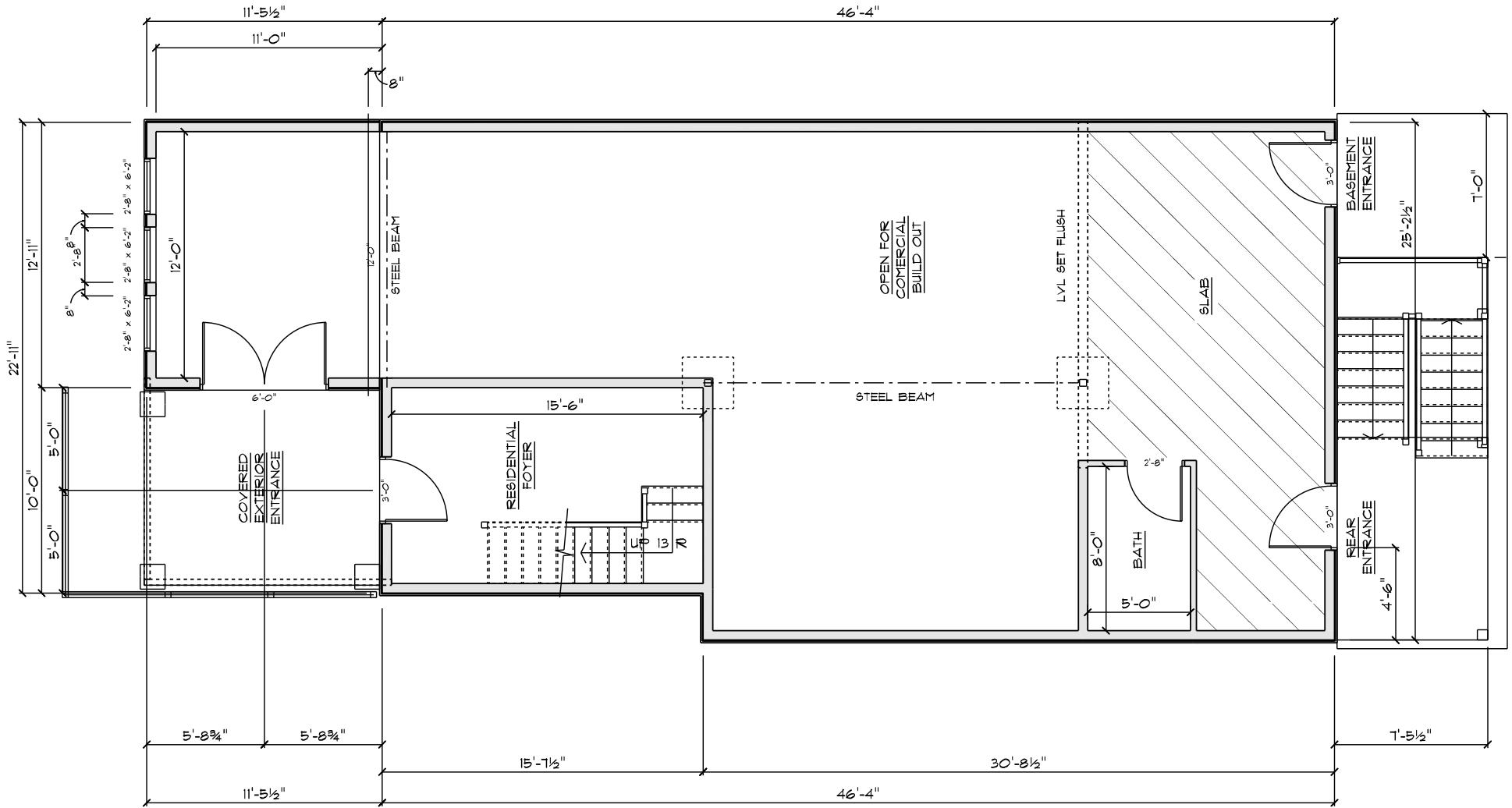
AVAILABLE:	1,180 SF ±
BUILDING SIZE:	2,524 SF ±
PARKING:	PRIVATE - REAR
TRAFFIC COUNT:	9,360 (E MAIN ST)
RENTAL RATE:	NEGOTIABLE



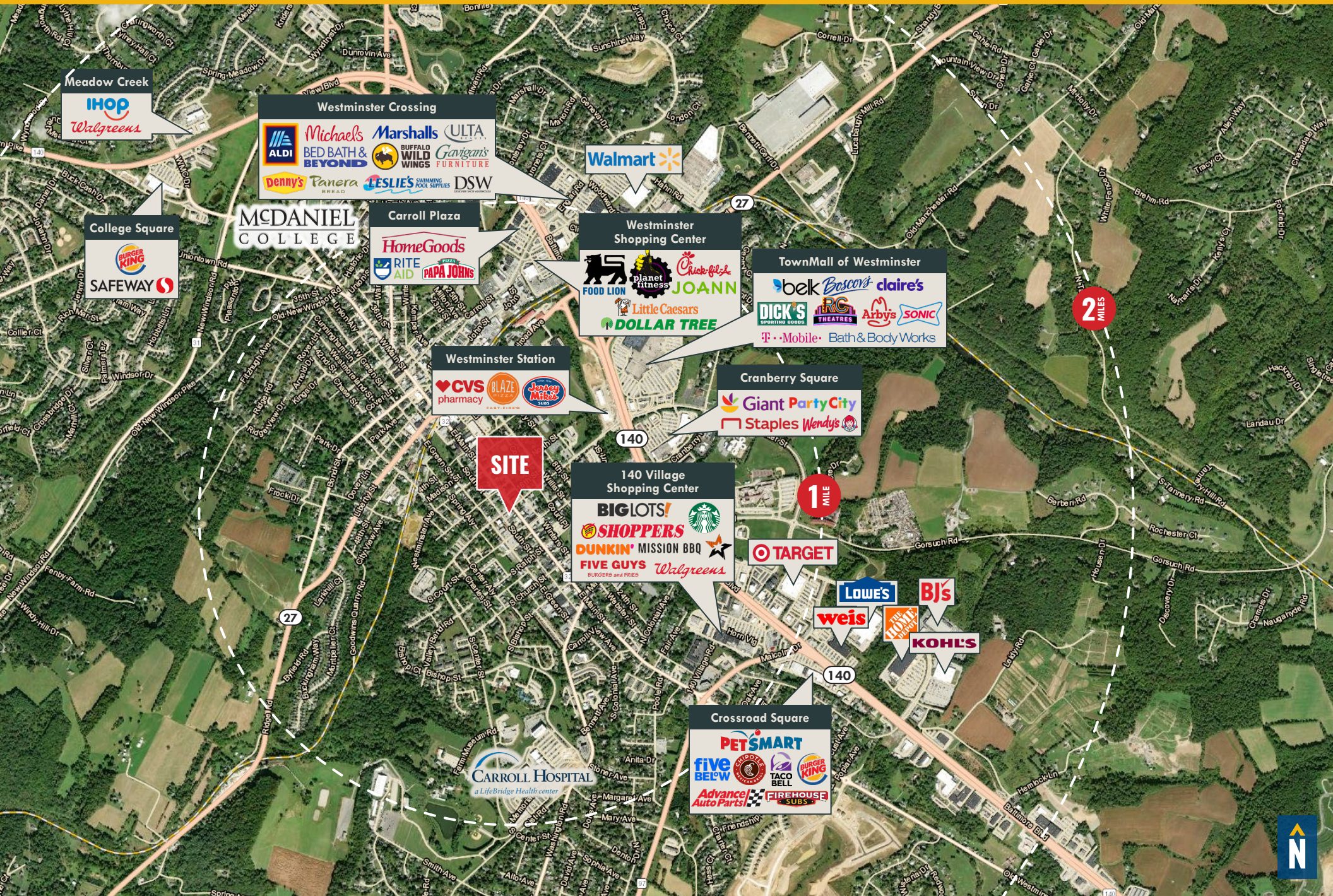
GOOGLE STREET VIEW



FLOOR PLAN



LOCAL TRADE AREA



DEMOGRAPHICS

2025

RADIUS:

1 MILE

3 MILES

5 MILES

RESIDENTIAL POPULATION



9,463

36,496

47,972

DAYTIME POPULATION



18,704

43,990

51,148

AVERAGE HOUSEHOLD INCOME



\$83,587

\$117,118

\$126,282

NUMBER OF HOUSEHOLDS



4,113

13,725

17,977

MEDIAN AGE

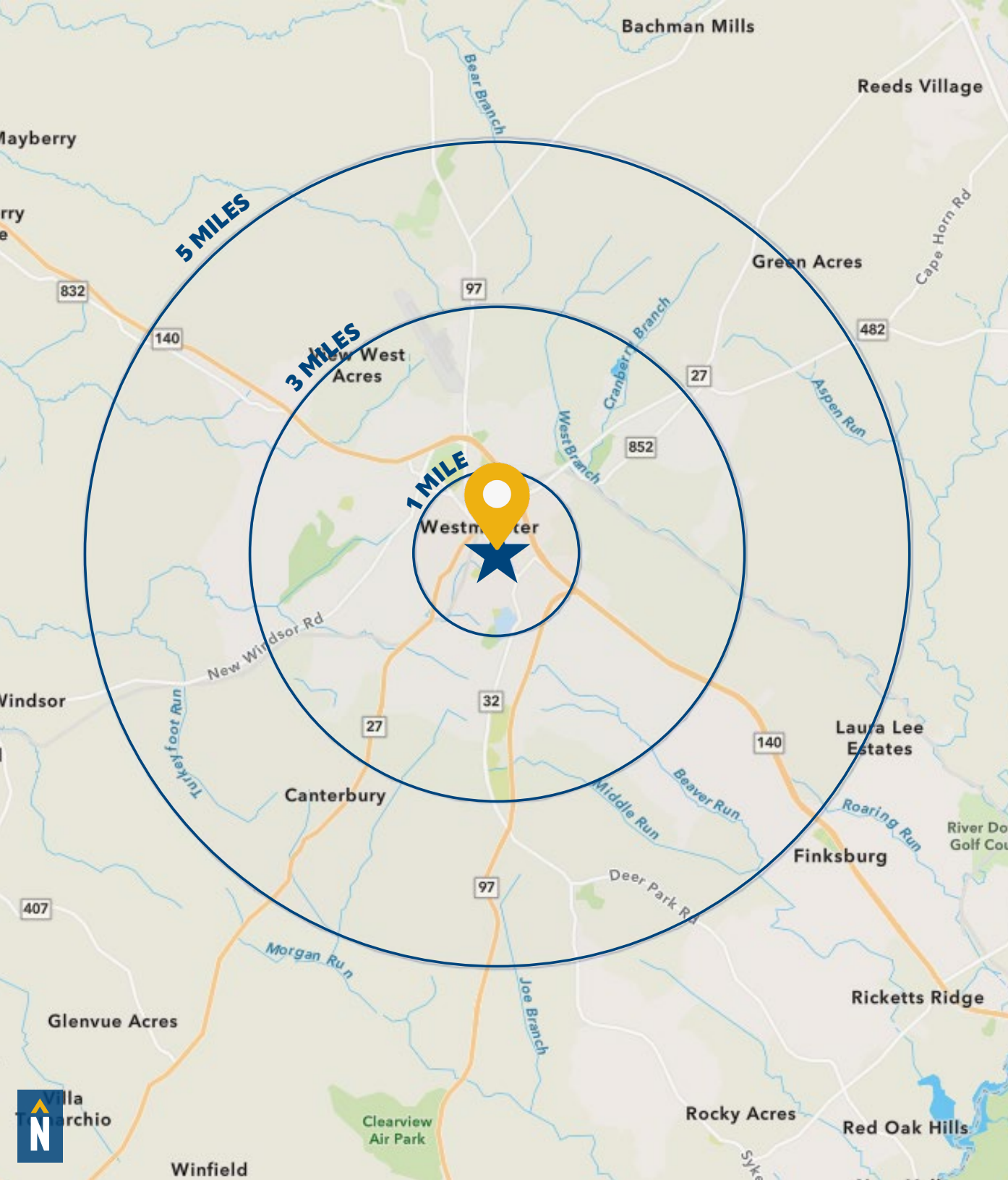


38.9

40.0

41.3

[FULL DEMOS REPORT](#)



FOR MORE INFO **CONTACT:**



DENNIS BOYLE, SIOR

SENIOR VICE PRESIDENT

443.798.9339

DBOYLE@mackenziecommercial.com



MACKENZIE

COMMERCIAL REAL ESTATE SERVICES, LLC

410-872-0400

10175 Little Patuxent Parkway, Suite 902
Columbia, MD 21044

OFFICES IN: ANNAPOLIS, MD BALTIMORE, MD BEL AIR, MD **COLUMBIA, MD** LUTHERVILLE, MD CHARLOTTESVILLE, VA

www.MACKENZIECOMMERCIAL.com



VISIT **PROPERTY PAGE** FOR MORE INFORMATION

No warranty or representation, expressed or implied, is made as to the accuracy of the information contained herein, and same is submitted subject to errors, omissions, change of price, rental or other conditions, withdrawal without notice, and to any specific listing conditions imposed by our principals.