



WEST WOODS BUSINESS PARK

180 ADMIRAL COCHRANE DR | ANNAPOLIS, MARYLAND 21401

FOR
SUBLEASE



MACKENZIE

COMMERCIAL REAL ESTATE SERVICES, LLC

PROPERTY OVERVIEW

HIGHLIGHTS:

- Fully Furnished Trophy Class A Office Space Available for sublease featuring glass finishes and an impressive window line
- Convenient Access to Riva and Solomon's Island Roads and Route 197
- Extensive parking includes both covered and surface parking options.
- On-site amenities include Peppercorn Gourmet and a fitness center with locker rooms.
- Close proximity to Annapolis Towne Center, Festival at Riva, Annapolis Harbour Centre, and the Westfield Annapolis Mall.

BUILDING SIZE:

125,728 SF ±

AVAILABLE:

SUITE 520: 9,529 SF
SUBLEASE TERM RUNS THROUGH
4/30/2027

STORIES:

5

PARKING:

300 SURFACE (4.5/1,000 SF)

ZONING:

W-1

RENTAL RATE:

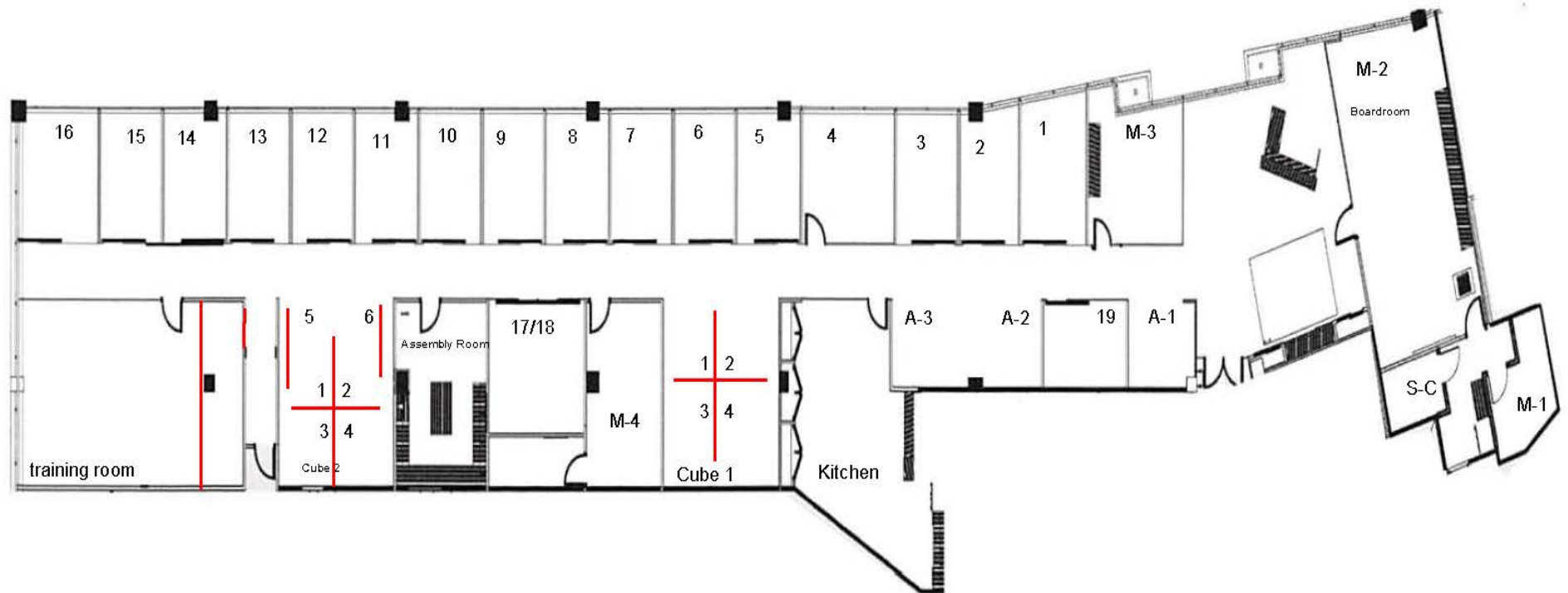
NEGOTIABLE



LOCAL BIRDSEYE



FLOOR PLAN



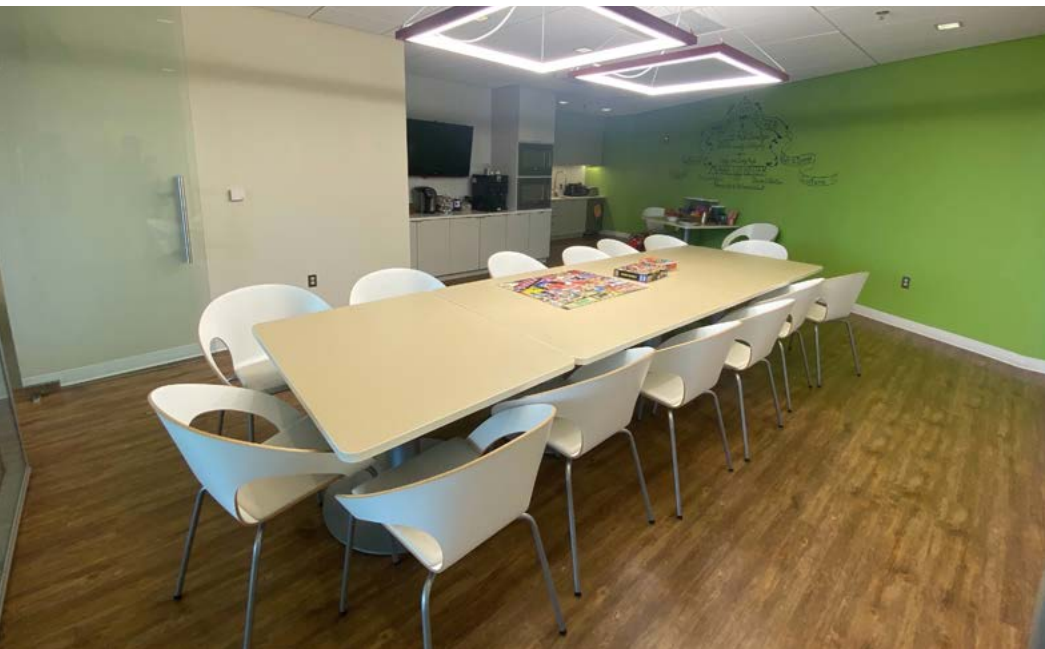
MODERN COMMON AREAS

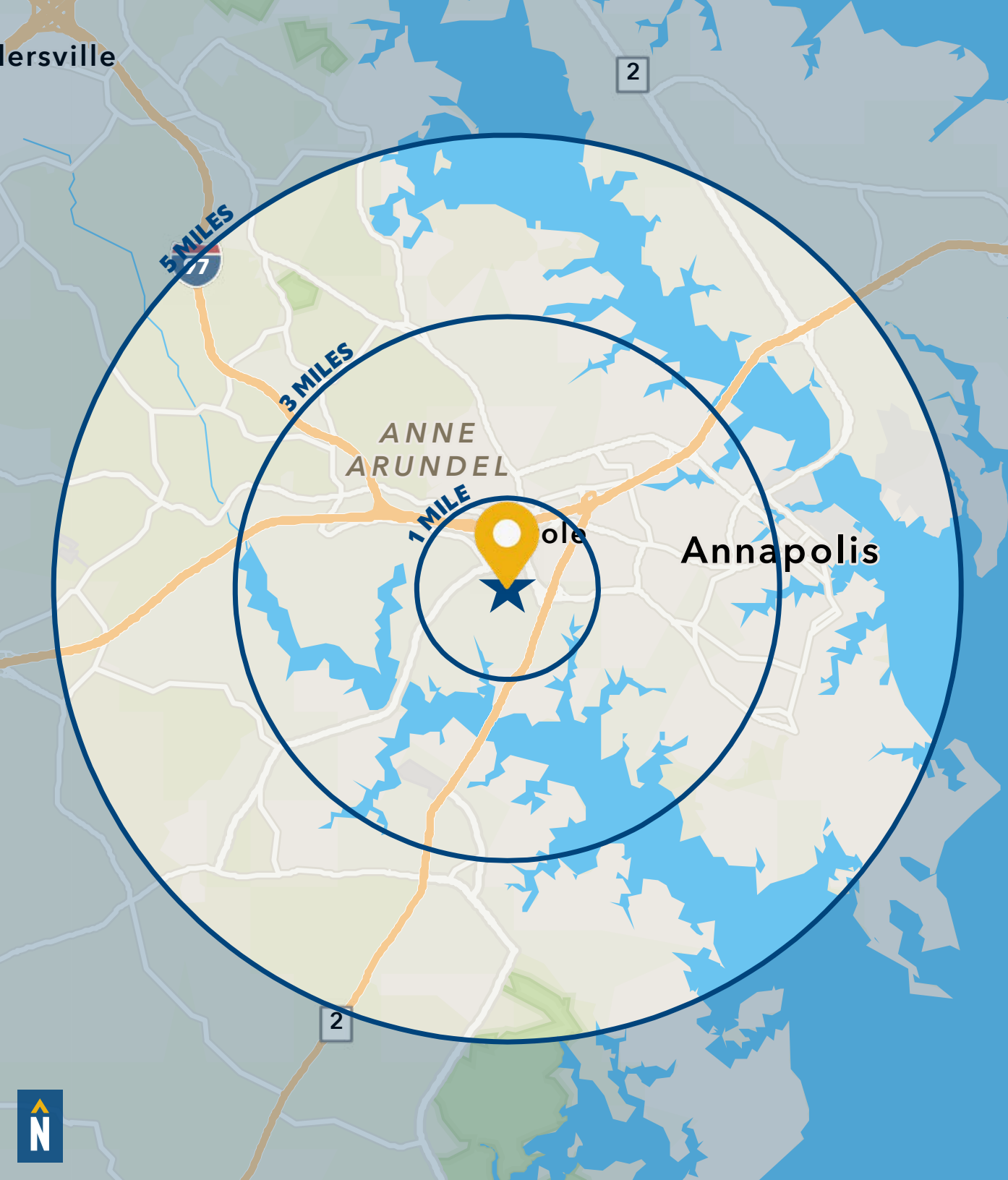


INTERIOR PHOTOS



INTERIOR PHOTOS





DEMOGRAPHICS

2023

RADIUS:

1 MILE

3 MILES

5 MILES

RESIDENTIAL POPULATION



2,769

27,148

47,937

DAYTIME POPULATION



29,116

95,867

146,620

AVERAGE HOUSEHOLD INCOME



\$196,469

\$157,236

\$172,099

NUMBER OF HOUSEHOLDS



3,019

23,980

41,014

MEDIAN AGE



55.1

43.4

44.2

FULL DEMOS REPORT



FOR MORE INFO **CONTACT:**



TRISH FARRELL

SENIOR VICE PRESIDENT & PRINCIPAL

410.974.9003

TFARRELL@mackenziecommercial.com



ETHAN BINNIX

REAL ESTATE ADVISOR

443.798.9342

EBINNIX@mackenziecommercial.com



VISIT **PROPERTY PAGE** FOR MORE INFORMATION.



MACKENZIE

COMMERCIAL REAL ESTATE SERVICES, LLC

410-974-9336

410 Severn Avenue

Annapolis, MD 21403

OFFICES IN: **ANNAPOLIS, MD** BALTIMORE, MD BEL AIR, MD COLUMBIA, MD LUTHERVILLE, MD CHARLOTTESVILLE, VA

www.MACKENZIECOMMERCIAL.com

No warranty or representation, expressed or implied, is made as to the accuracy of the information contained herein, and same is submitted subject to errors, omissions, change of price, rental or other conditions, withdrawal without notice, and to any specific listing conditions imposed by our principals.