

# FOR LEASE

Harford County, Maryland

# 1800 W. GROVE AVENUE

FALLSTON, MARYLAND 21047

## AVAILABLE

2,700 sf fenced lot located on 0.9 AC

## LOT SIZE

30' x 90'

## ZONING

B3 (General Business District)

## TRAFFIC COUNT

30,382 AADT (Belair Road)

## RENTAL RATE

\$800/month

## HIGHLIGHTS

- ▶ 30' x 90' lot for lease on a 0.9 AC parcel
- ▶ Excellent location off of Belair Road

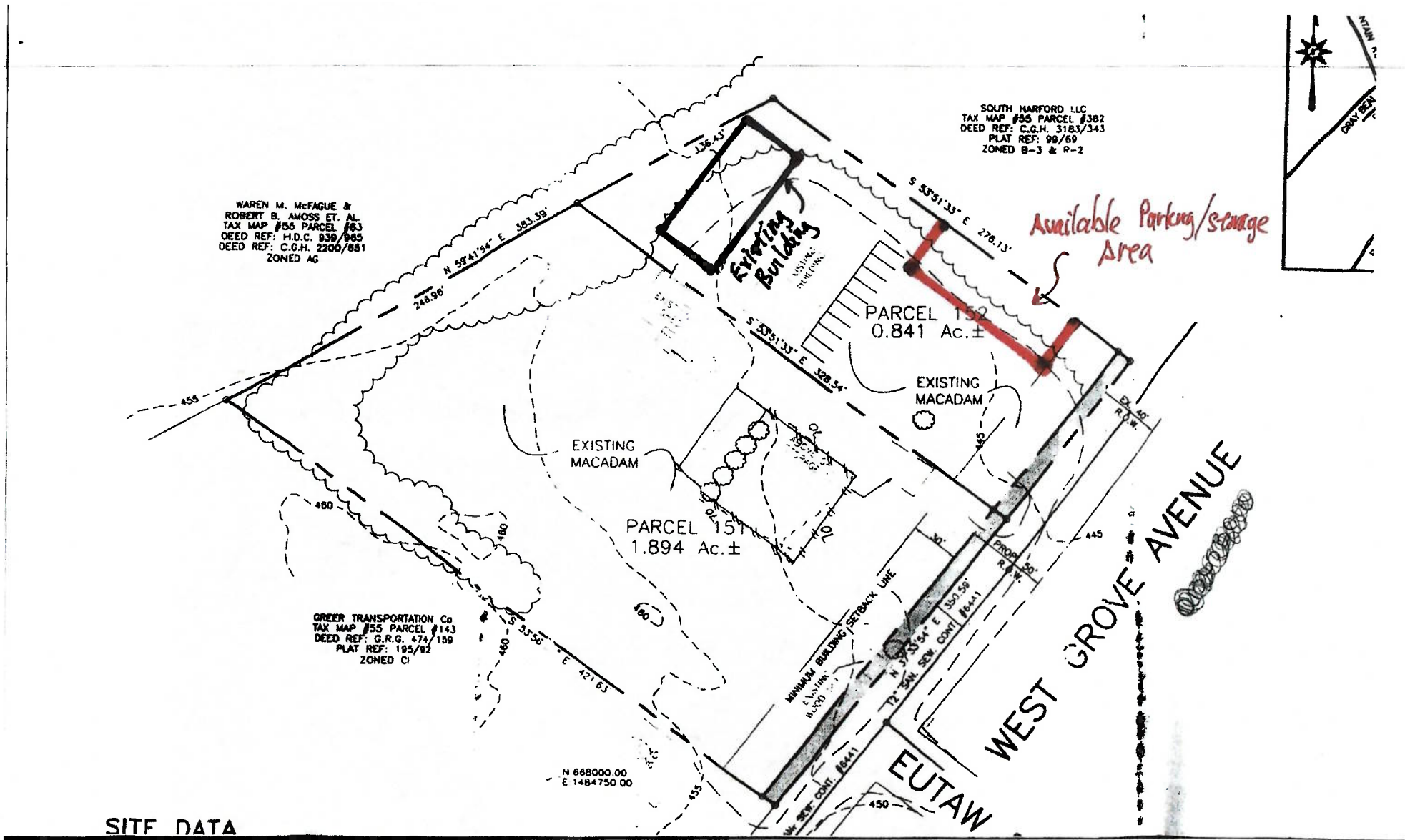


# FOR LEASE

Harford County, Maryland

# SITE PLAN

1800 W. GROVE AVENUE | FALLSTON, MARYLAND 21047



SITE DATA