



McHENRY ROW OFFICE SUITE

1801 PORTER STREET | BALTIMORE, MARYLAND 21230

FOR
SUBLEASE



MACKENZIE

COMMERCIAL REAL ESTATE SERVICES, LLC

PROPERTY OVERVIEW

HIGHLIGHTS:

- 4,826 SF ± 2nd floor office suite with Class A+ finishes and abundant windows/natural light
- Walkable to the many nearby amenities of McHenry Row and Locust Point
- Free covered parking
- Adjacent to Courtyard Marriott
- Easy access to I-95
- Short drive to Downtown Baltimore

AVAILABLE:

4,826 SF ± (2ND FLOOR)

PARKING:

FREE & COVERED

TERM:

NEGOTIABLE

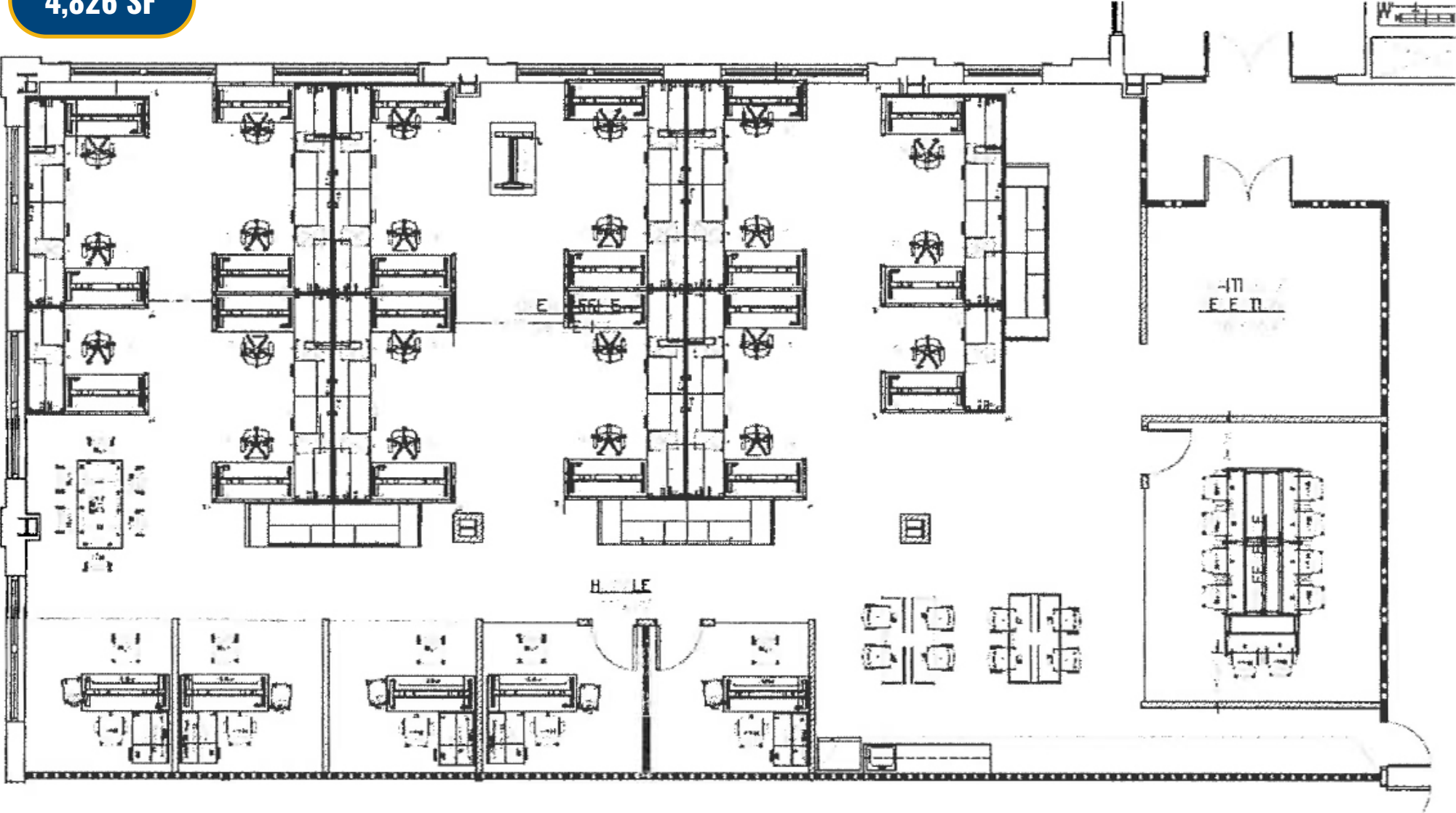


GOOGLE STREET VIEW

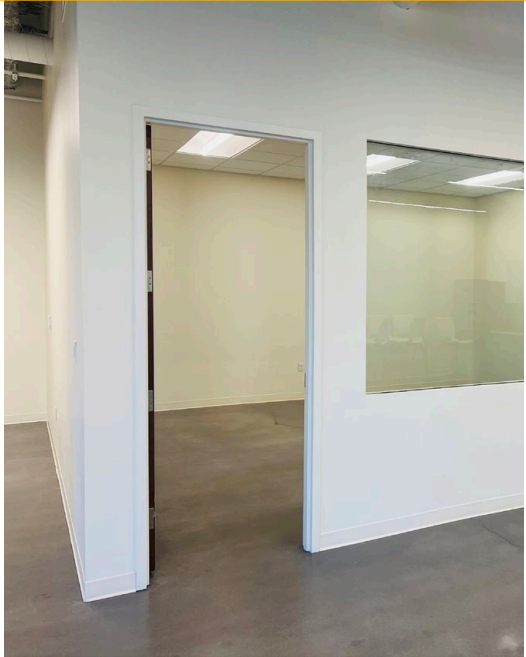


FLOOR PLAN

4,826 SF



INTERIOR PHOTOS



LOCAL BIRDSEYE



BALTIMORE

Giant

DOLLAR TREE

GNC

five BELOW

Le Pizzeria

McDonald's

merritt clubs

Starbucks

TRIBE

Anthem House

Yes Chef!

JJ

F&B

SAMOS

DUNKIN'

PNC

M&T Bank

Harris Teeter
Neighborhood Food & Pharmacy

COURTYARD
BY MARRIOTT

SITE

INTERSTATE
95



FOR MORE INFO **CONTACT:**



MATTHEW CURRAN, SIOR

SENIOR VICE PRESIDENT & PRINCIPAL

443.573.3203

MCURRAN@mackenziecommercial.com



MARK DEERING

SENIOR VICE PRESIDENT & PRINCIPAL

443.573.3201

MDEERING@mackenziecommercial.com



MACKENZIE

COMMERCIAL REAL ESTATE SERVICES, LLC

443-573-3200

111 S. Calvert Street
Baltimore, MD 21202

OFFICES IN:

ANNAPOLIS

BALTIMORE

BEL AIR

COLUMBIA

LUTHERVILLE

www.MACKENZIECOMMERCIAL.com



VISIT **PROPERTY PAGE** FOR MORE INFORMATION.

No warranty or representation, expressed or implied, is made as to the accuracy of the information contained herein, and same is submitted subject to errors, omissions, change of price, rental or other conditions, withdrawal without notice, and to any specific listing conditions imposed by our principals.