



STEVENSON STATION

1925 OLD VALLEY ROAD | STEVENSON, MARYLAND 21153

FOR
LEASE



MACKENZIE

COMMERCIAL REAL ESTATE SERVICES, LLC

PROPERTY OVERVIEW

HIGHLIGHTS:

- Free and ample surface parking
- Retail Shopping Center within walking distance
- Great access to I-695
- Beautiful scenic/rural views from private offices
- Potential storage space available
- In close proximity to multiple private schools

AVAILABLE:

EXECUTIVE SUITE AVAILABLE:
SUITE 1
2ND FLOOR: 2,507 SF

BUILDING SIZE:

19,278 SF

ZONING:

BL (BUSINESS LOCAL)

RENTAL RATE:

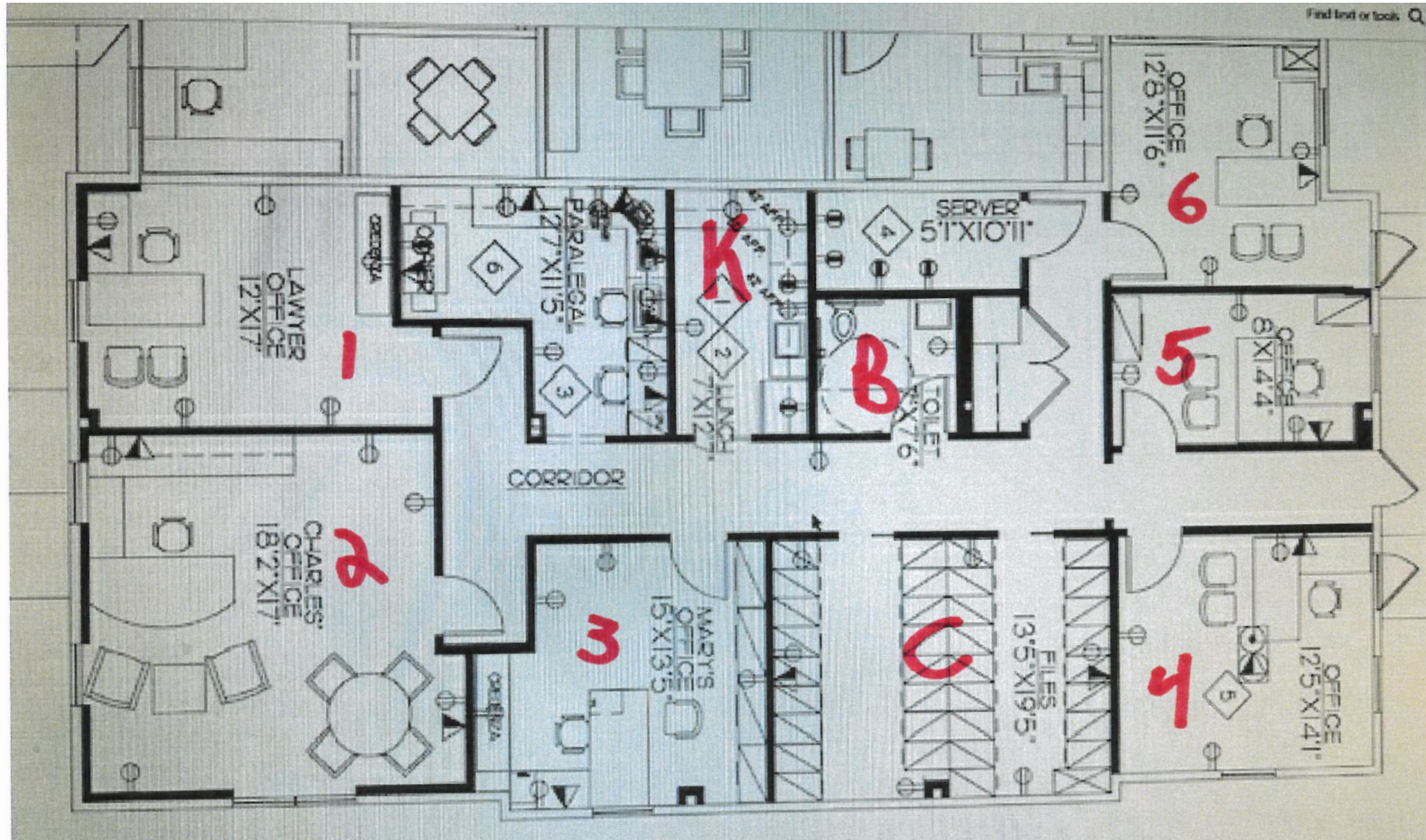
NEGOTIABLE



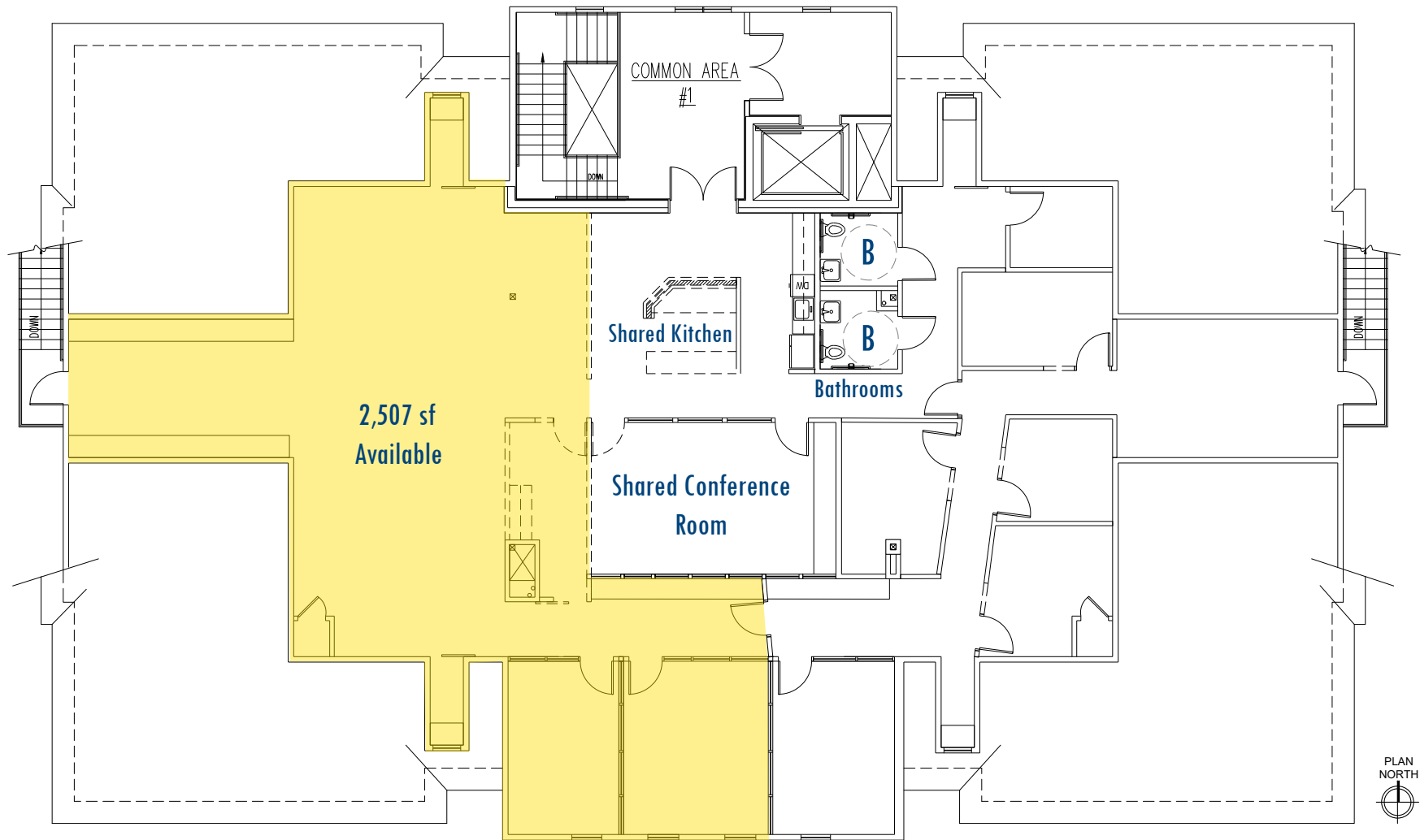
GOOGLE STREET VIEW



FLOOR PLAN: **EXECUTIVE SUITES**



FLOOR PLAN: 2ND FLOOR



LOCAL AERIAL



Jones Falls

Stevenson Village Shopping Center
CHESSIE'S FOOD WORKS
SHINE NAIL BOUTIQUE
SALON O
PAPERS PLUS STATIONARY
THE FRENCH PARADOX WINES
HILLSIDE NEEDLE ARTS
STEVENSON GAMES

THE VELVET CHOCOLATIER
JULIYA'S CUSTOM TAILORING & ALTERATIONS

SITE

Old Valley Rd

Cottage Ln

Hillside Rd

Stevenson Rd

RATCLIFFE ARCHITECTS
STONE HOUSE BUILDERS



DEMOGRAPHICS

2023

RADIUS:

1 MILE

3 MILES

5 MILES

RESIDENTIAL POPULATION



1,875

43,480

208,665

DAYTIME POPULATION



1,769

48,982

213,515

AVERAGE HOUSEHOLD INCOME



\$279,482

\$159,396

\$131,196

NUMBER OF HOUSEHOLDS



741

18,049

84,769

MEDIAN AGE

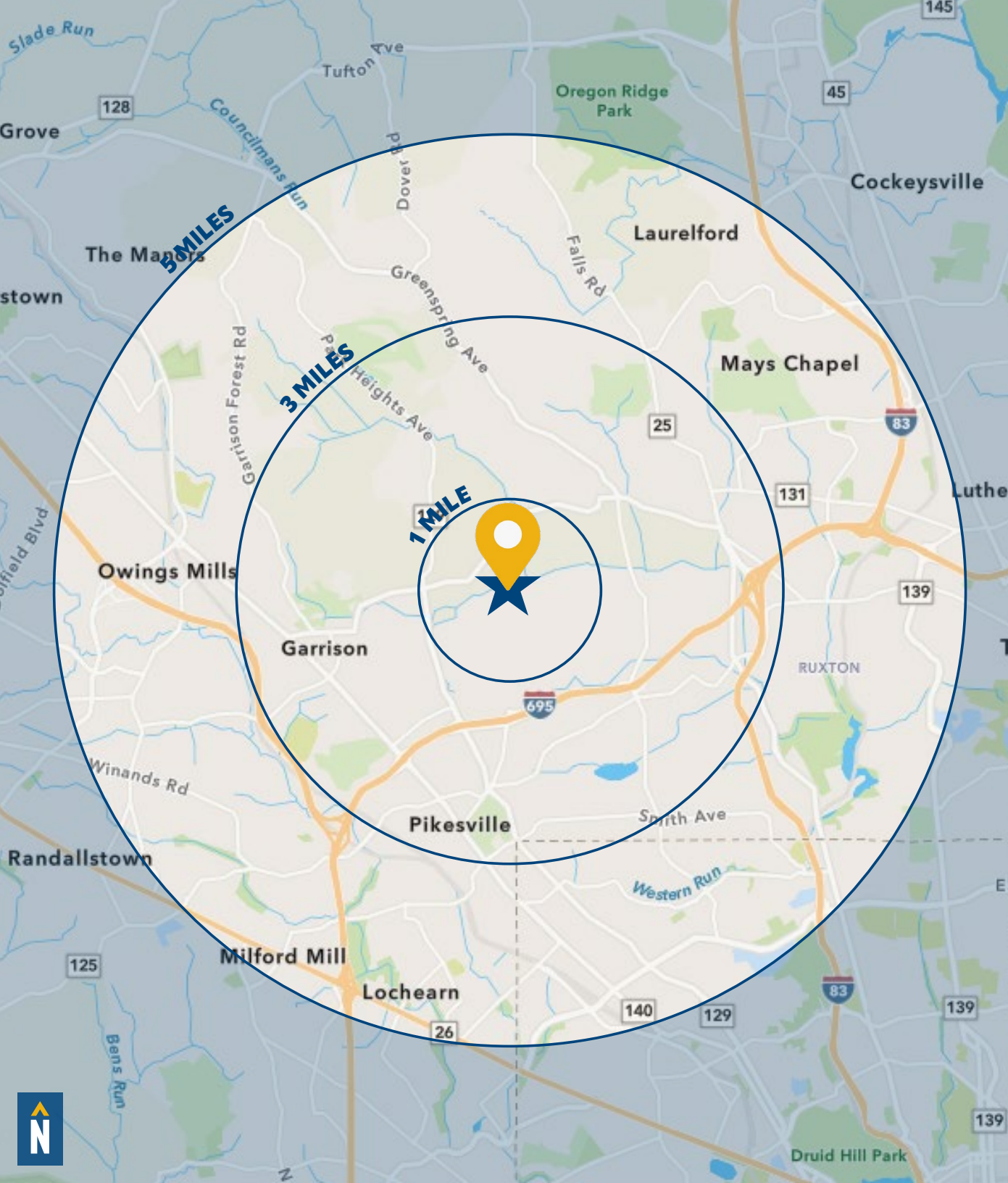


55.2

47.2

42.3

FULL DEMOS REPORT



FOR MORE INFO **CONTACT:**

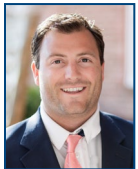


JOE BRADLEY

SENIOR VICE PRESIDENT & PRINCIPAL

410.494.4892

JBRADLEY@mackenziecommercial.com



DYLAN BOZEL

REAL ESTATE ADVISOR

410.494.4896

DBOZEL@mackenziecommercial.com



MACKENZIE

COMMERCIAL REAL ESTATE SERVICES, LLC

410-821-8585

**2328 W. Joppa Road, Suite 200
Lutherville, MD 21093**

OFFICES IN: ANNAPOLIS, MD BALTIMORE, MD BEL AIR, MD COLUMBIA, MD **LUTHERVILLE, MD** CHARLOTTESVILLE, VA

www.MACKENZIECOMMERCIAL.com



VISIT **PROPERTY PAGE** FOR MORE INFORMATION.

No warranty or representation, expressed or implied, is made as to the accuracy of the information contained herein, and same is submitted subject to errors, omissions, change of price, rental or other conditions, withdrawal without notice, and to any specific listing conditions imposed by our principals.