

FOR LEASE

Harford County, Maryland

2309 BELAIR ROAD

FALLSTON, MARYLAND 21047

AVAILABLE

Suite 310: 225 sf (\$650/Month)

BUILDING SIZE

14,000 sf

ZONING

B3 (General Business District)

HIGHLIGHTS

- ▶ Well located on Belair Road, just north of Route 152
- ▶ Close proximity to nearby shops, restaurants, and banking
- ▶ Accessible to I-95 and downtown Bel Air
- ▶ Ample free surface parking

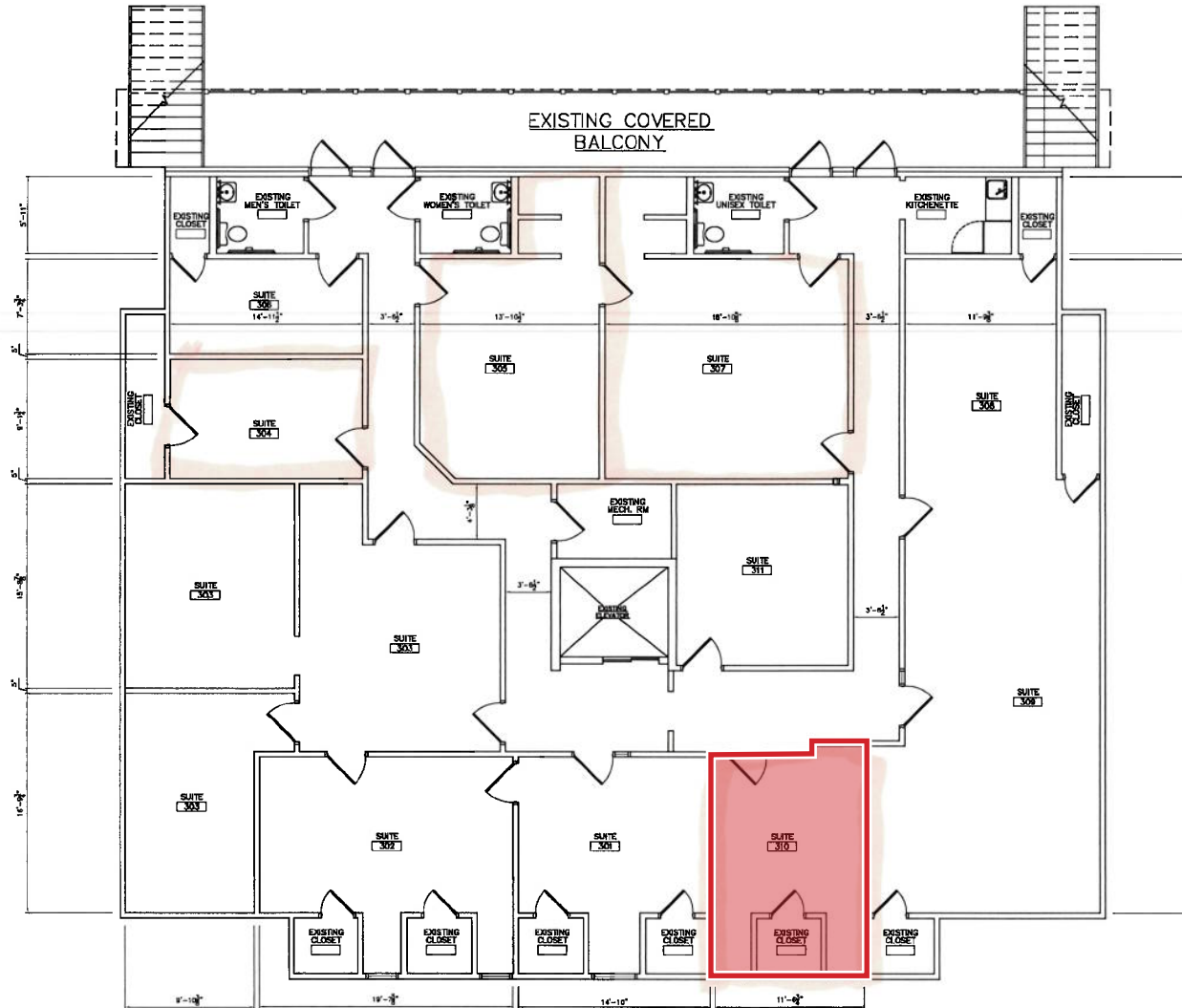


FOR LEASE

Harford County, Maryland

THIRD FLOOR PLAN

2309 BELAIR ROAD | FALLSTON, MARYLAND 21047



FOR LEASE

Harford County, Maryland

SURROUNDING AMENITIES

2309 BELAIR ROAD | FALLSTON, MARYLAND 21047

