



2400 YORK ROAD

TIMONIUM, MARYLAND 21093

FOR
LEASE



MACKENZIE
COMMERCIAL REAL ESTATE SERVICES, LLC

PROPERTY OVERVIEW

HIGHLIGHTS:

- Centrally located on York Road between Padonia and Timonium Road
- Walking Amenties nearby (Restaurants, Gyms, Gas Stations, Coffee Shops)
- Free Parking
- Private Entrance with Elevator



BUILDING SIZE:

18,000 SF \pm

AVAILABLE:

SUITE 2: 9,000 SF \pm

YEAR BUILT:

1980

STORIES:

2

ZONING:

SE (SERVICE EMPLOYMENT)

RENTAL RATE:

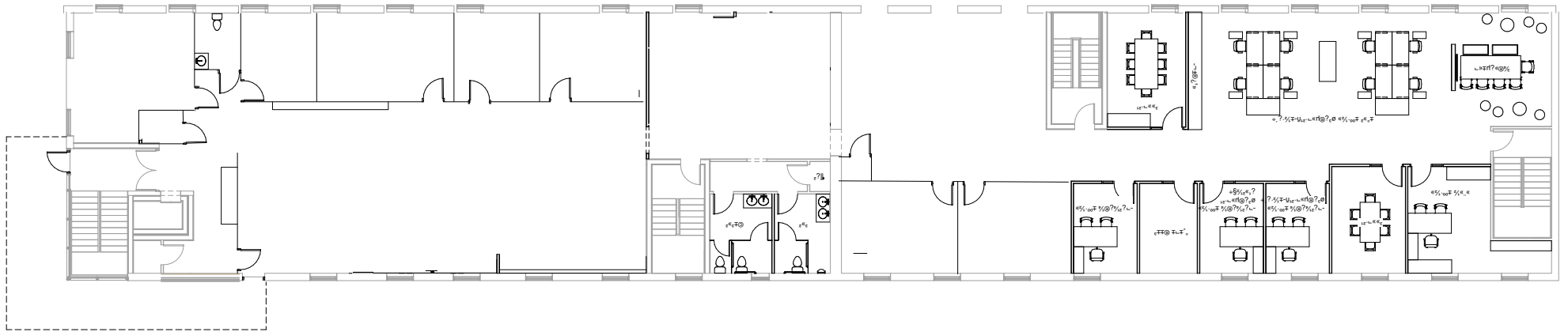
NEGOTIABLE



GOOGLE STREET VIEW



FLOOR PLAN



MARKET AERIAL



Sam's Club
Lowe's Home Improvement

Wendy's
Umi Sake
Sakai Sushi &
Steak Buffet

Padonia Village

LIDL	SECU Credit Union
Bank of America	Edo Sushi
Pho Tan My	Taco Bravo
CuVino	Marathon
Uber Bagels	Charm City Smiles
Padonia Liquors	Lightbridge

Chili's Grill and Bar
Holiday Inn
M&T Bank

PADONIA RD

Brick Bodies
Mother's North Grille

SITE

Duckpin

An Poitin Stil

Hightopps
Backstage Grille

The Tile Shop
La-Z-Boy
eggspectation



45

Bowlero

MARYLAND STATE FAIR GROUNDS

Timonium Square

Panera Bread	Zoes Kitchen
Giant Food	Honey Baked Ham Company
Cava	Staples
Dollar Tree	Exxon
QDOBA	First National Bank
FirstWatch	



DEMOGRAPHICS

2024

RADIUS:

1 MILE

3 MILES

5 MILES

RESIDENTIAL POPULATION



9,680

60,264

118,915

DAYTIME POPULATION



15,505

79,433

171,733

AVERAGE HOUSEHOLD INCOME



\$131,364

\$153,646

\$159,967

NUMBER OF HOUSEHOLDS



3,880

24,852

47,090

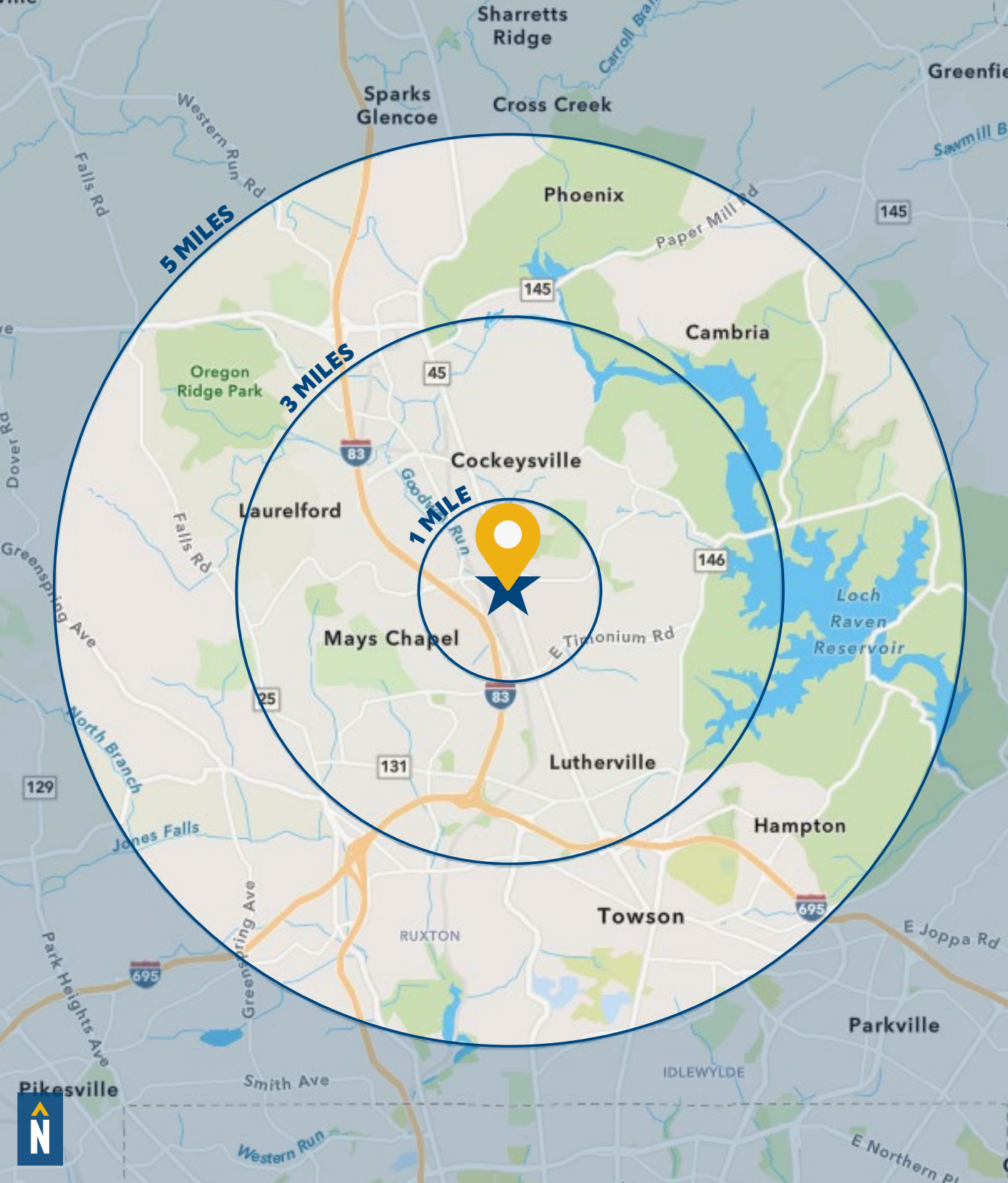
MEDIAN AGE



36.1

42.3

40.5



FOR MORE INFO **CONTACT:**



DYLAN BOZEL

SENIOR REAL ESTATE ADVISOR

410.494.4896

DBOZEL@mackenziecommercial.com



VISIT **PROPERTY PAGE** FOR MORE INFORMATION.



MACKENZIE

COMMERCIAL REAL ESTATE SERVICES, LLC

410-821-8585

**2328 W. Joppa Road, Suite 200
Lutherville, MD 21093**

OFFICES IN: ANNAPOLIS, MD BALTIMORE, MD BEL AIR, MD COLUMBIA, MD **LUTHERVILLE, MD** CHARLOTTESVILLE, VA

www.MACKENZIECOMMERCIAL.com

No warranty or representation, expressed or implied, is made as to the accuracy of the information contained herein, and same is submitted subject to errors, omissions, change of price, rental or other conditions, withdrawal without notice, and to any specific listing conditions imposed by our principals.