



BEL AIR SQUARE

260 GATEWAY DRIVE | BEL AIR, MARYLAND 21014

FOR
LEASE

**BEL
AIR**
SQUARE



MACKENZIE

COMMERCIAL REAL ESTATE SERVICES, LLC

PROPERTY OVERVIEW

HIGHLIGHTS:

- Flexible floor plans with separate entrances
- Abundant, free, on-site parking available
- Private entrances, individual thermostats, wall to wall carpeting, powder rooms, mini blinds, ambient lighting, and “instant” hot water
- Dining, retail, banking, and personal service amenities nearby

AVAILABLE:

17-18 B: 1,152 SF ±
11-12 C: 1,152 SF ±

PARKING:

FREE, ON-SITE

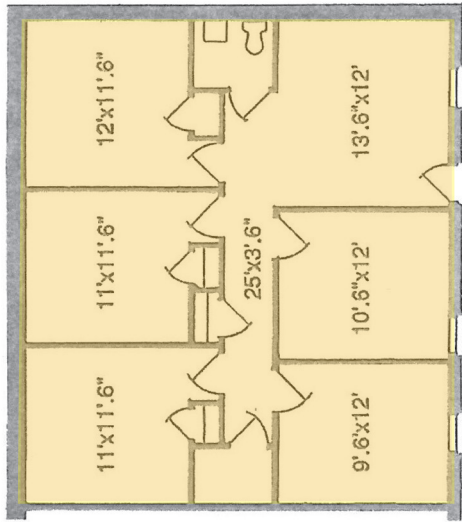
RENTAL RATE:

	SINGLE	DOUBLE
LEVEL A:	\$890/MO	\$1,650/MO
LEVEL B:	\$1,020/MO	\$2,100/MO
LEVEL C:	\$920/MO	\$1,690/MO

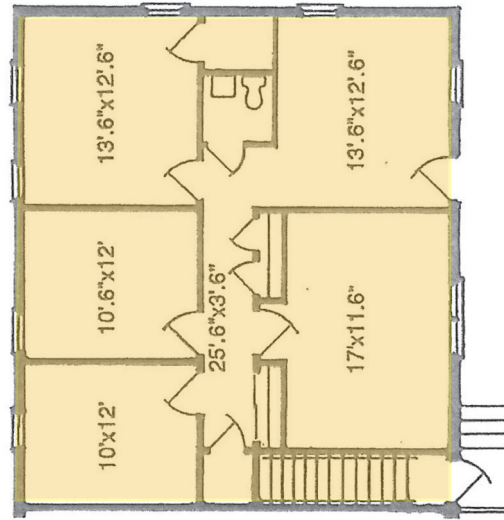


GOOGLE STREET VIEW

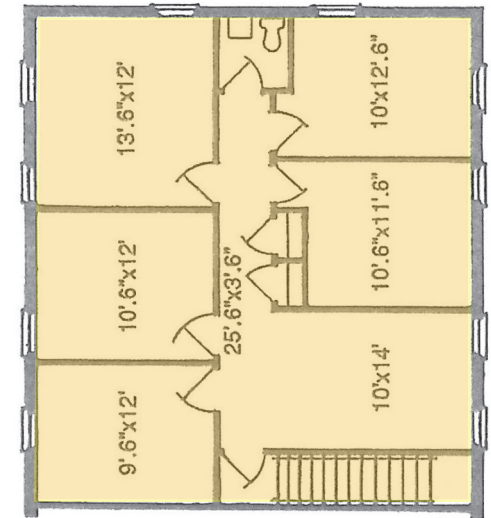
FLOOR PLANS



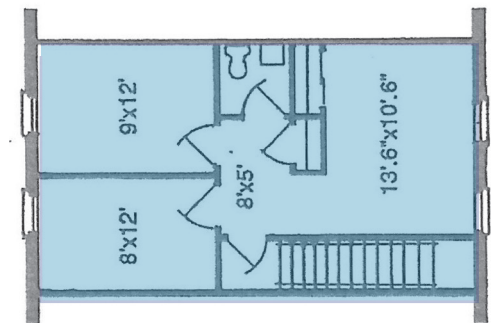
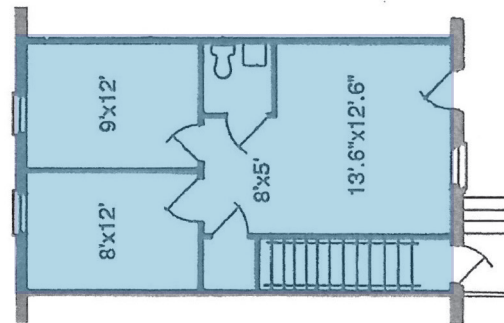
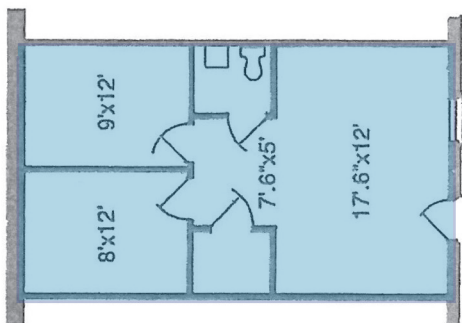
Lower Level - A



Middle Level - B



Upper Level - C

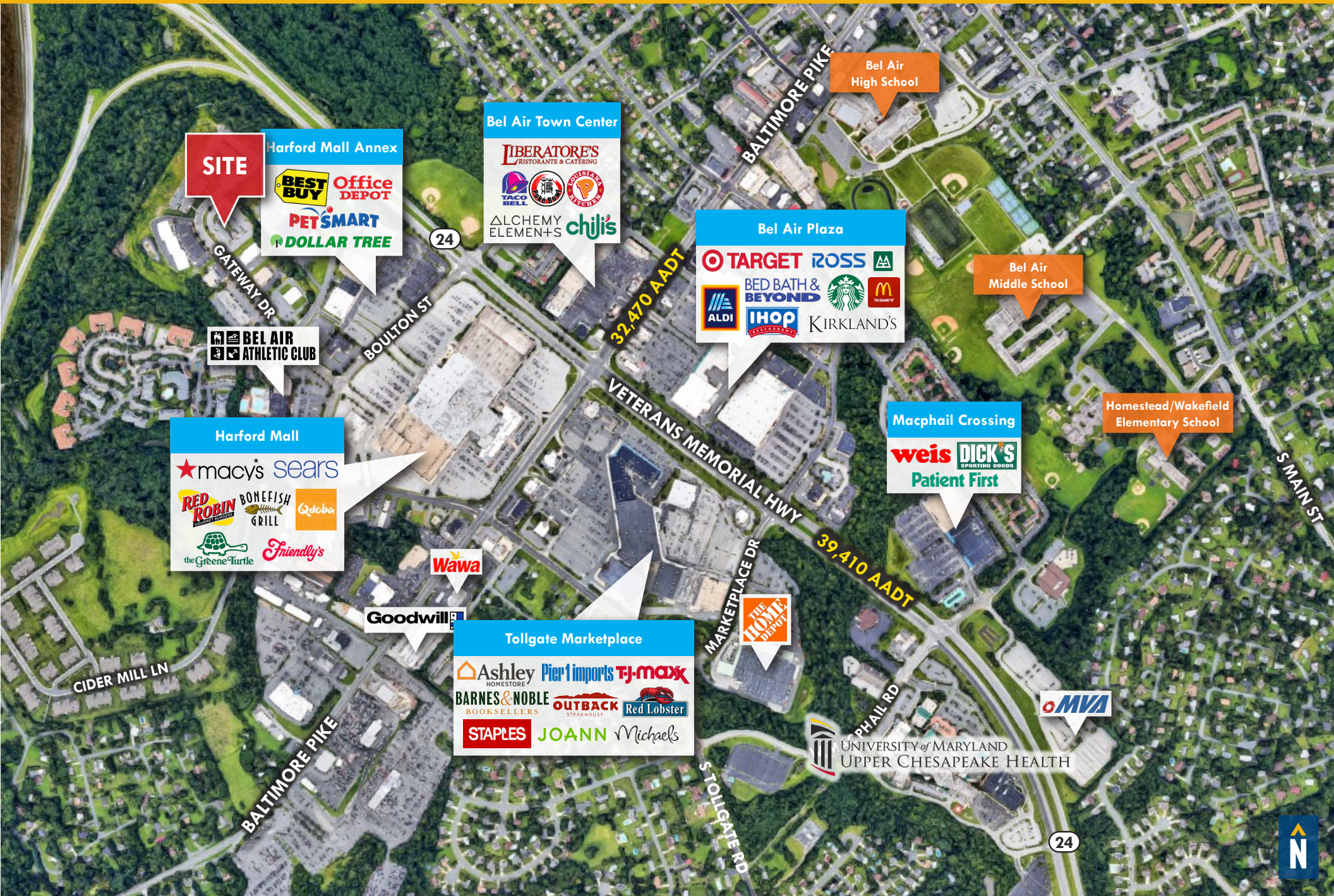


 Typical Double Layout*

 Typical Single Layout*

*All measurements are approximate

LOCAL BIRDSEYE



DEMOGRAPHICS

2024

RADIUS:

1 MILE

2 MILES

3 MILES

RESIDENTIAL POPULATION



5,904

63,978

116,388

DAYTIME POPULATION



17,257

67,738

108,083

AVERAGE HOUSEHOLD INCOME



\$112,739

\$144,325

\$151,404

NUMBER OF HOUSEHOLDS



2,719

24,861

43,943

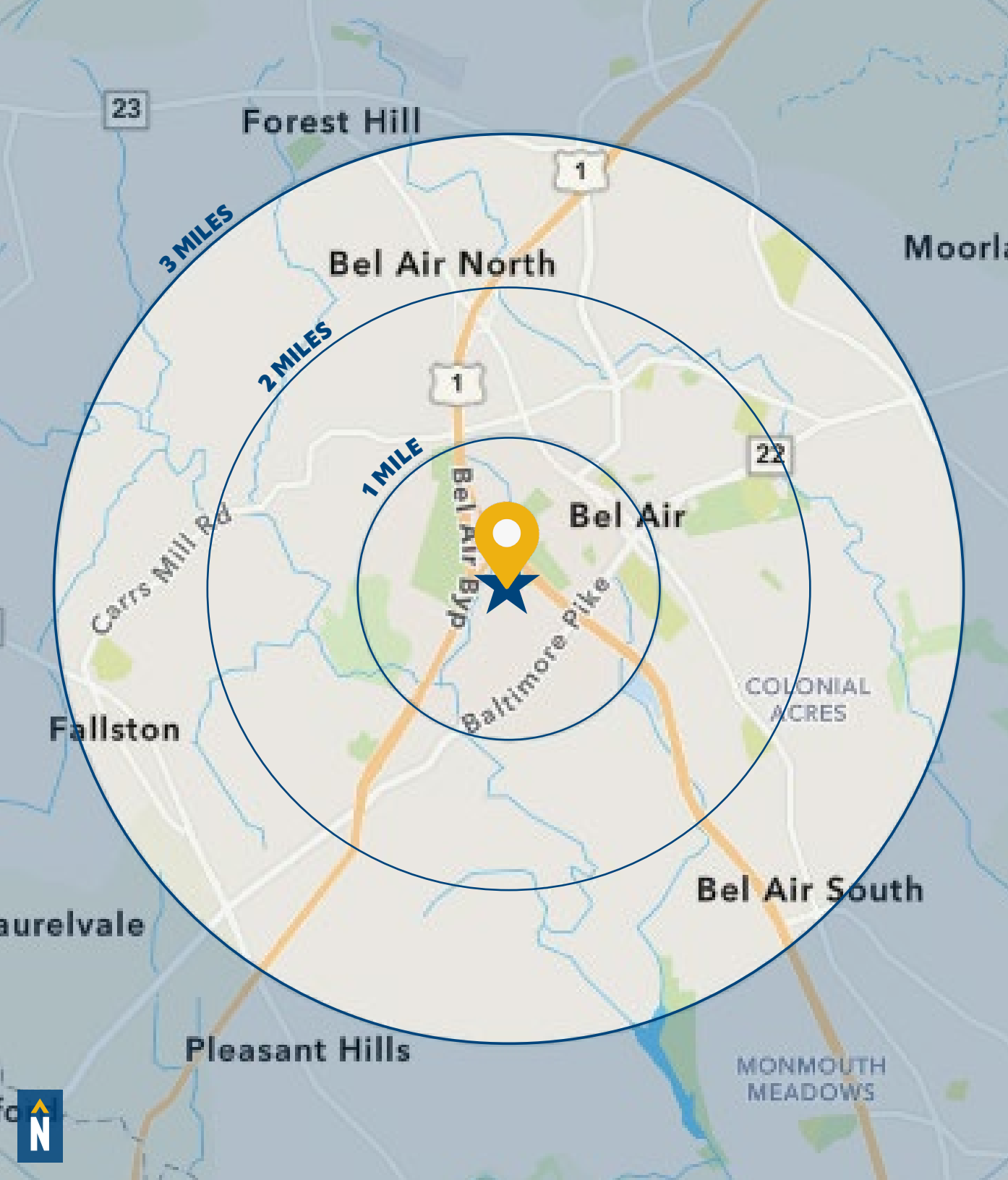
MEDIAN AGE



46.4

42.1

41.5



FOR MORE INFO **CONTACT:**



BEETLE SMITH
SENIOR VICE PRESIDENT

443.573.3219

BSMITH@mackenziecommercial.com



VISIT **PROPERTY PAGE** FOR MORE INFORMATION.



MACKENZIE
COMMERCIAL REAL ESTATE SERVICES, LLC

410-879-1900

**3465 Box Hill Corporate Center Drive, Suite F
Abingdon, MD 21009**

OFFICES IN: ANNAPOLIS, MD BALTIMORE, MD **BEL AIR, MD** COLUMBIA, MD LUTHERVILLE, MD CHARLOTTESVILLE, VA

www.MACKENZIECOMMERCIAL.com

No warranty or representation, expressed or implied, is made as to the accuracy of the information contained herein, and same is submitted subject to errors, omissions, change of price, rental or other conditions, withdrawal without notice, and to any specific listing conditions imposed by our principals.