


FOR SALE

 Baltimore County, MD

INDUSTRIAL LAND

314 EARLS ROAD

MIDDLE RIVER, MARYLAND 21220



 **MACKENZIE**
COMMERCIAL REAL ESTATE SERVICES, LLC

Andrew Meeder, SIOR

☎ 410.494.4881

✉ ameeder@mackenziecommercial.com

Matthew Curran, SIOR

☎ 443.573.3203

✉ mcurran@mackenziecommercial.com

Daniel Hudak, SIOR

☎ 443.573.3205

✉ dhudak@mackenziecommercial.com

MacKenzie Commercial Real Estate Services, LLC • 443-573-3200 • 111 S. Calvert Street, Suite 2800 | Baltimore, Maryland 21202 • www.MACKENZIECOMMERCIAL.com

FOR SALE

Baltimore County, MD

HEAVY INDUSTRIAL-ZONED LAND

314 EARLS ROAD | MIDDLE RIVER, MARYLAND 21220

LOT SIZE

8.69 Acres ±

ZONING

MH IM (Manufacturing, Heavy)
[Industrial, Major District]

TOPOGRAPHY

Flat

HIGHLIGHTS

- ▶ Currently owned and operated as a nursery
- ▶ Four existing buildings on-site:
 - » Bldg. 'A': 2,200 sf ± (house)
 - » Bldg. 'B': 600 sf ± (2-car garage)
 - » Bldg. 'C': 1,450 sf ± (service office/warehouse)
 - » Bldg. 'D': 1,200 sf ± (service warehouse)
- ▶ Well and septic
- ▶ Public water and sewer potentially coming soon
- ▶ Natural gas to portion of property
- ▶ Easy access to Routes 43 (White Marsh Blvd) & 40 (Pulaski Hwy)



STREET VIEW

Andrew Meeder, SIOR

☎ 410.494.4881

✉ ameeder@mackenziecommercial.com

Matthew Curran, SIOR

☎ 443.573.3203

✉ mcurran@mackenziecommercial.com

Daniel Hudak, SIOR

☎ 443.573.3205

✉ dhudak@mackenziecommercial.com

MACKENZIE
COMMERCIAL REAL ESTATE SERVICES, LLC

MacKenzie Commercial Real Estate Services, LLC • 443-573-3200 • 111 S. Calvert Street, Suite 2800 | Baltimore, Maryland 21202 • www.MACKENZIECOMMERCIAL.com

FOR SALE

Baltimore County, MD

AERIAL

314 EARLS ROAD | MIDDLE RIVER, MARYLAND 21220



 **MACKENZIE**
COMMERCIAL REAL ESTATE SERVICES, LLC

Andrew Meeder, SIOR

☎ 410.494.4881

✉ ameeder@mackenziecommercial.com

Matthew Curran, SIOR

☎ 443.573.3203

✉ mcurran@mackenziecommercial.com

Daniel Hudak, SIOR

☎ 443.573.3205

✉ dhudak@mackenziecommercial.com

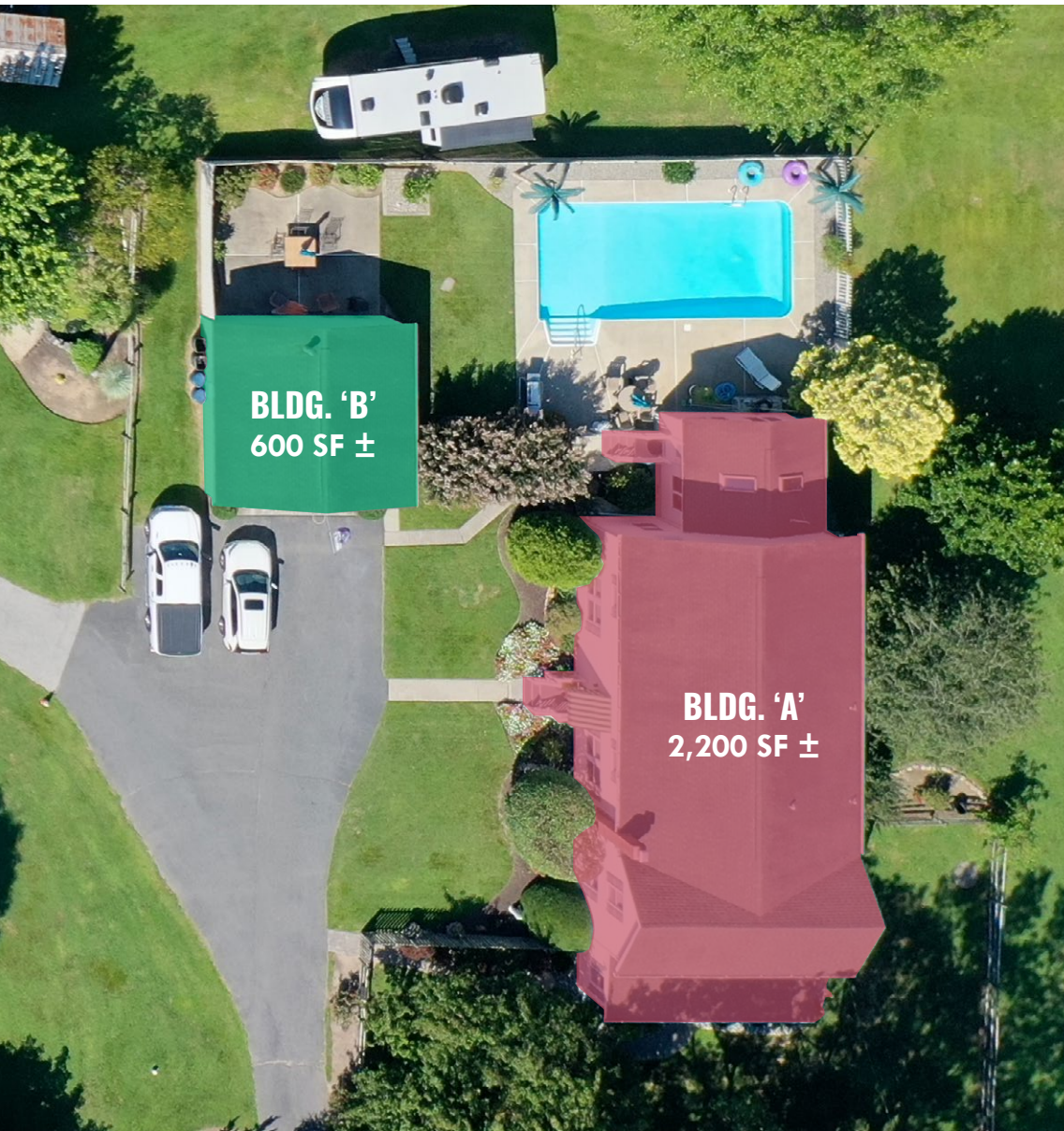
MacKenzie Commercial Real Estate Services, LLC • 443-573-3200 • 111 S. Calvert Street, Suite 2800 | Baltimore, Maryland 21202 • www.MACKENZIECOMMERCIAL.com

FOR SALE

Baltimore County, MD

BUILDINGS 'A' & 'B': HOUSE / 2-CAR GARAGE

314 EARLS ROAD | MIDDLE RIVER, MARYLAND 21220



 **MACKENZIE**
COMMERCIAL REAL ESTATE SERVICES, LLC

Andrew Meeder, SIOR

☎ 410.494.4881

✉ ameeder@mackenziecommercial.com

Matthew Curran, SIOR

☎ 443.573.3203

✉ mcurran@mackenziecommercial.com

Daniel Hudak, SIOR

☎ 443.573.3205

✉ dhudak@mackenziecommercial.com

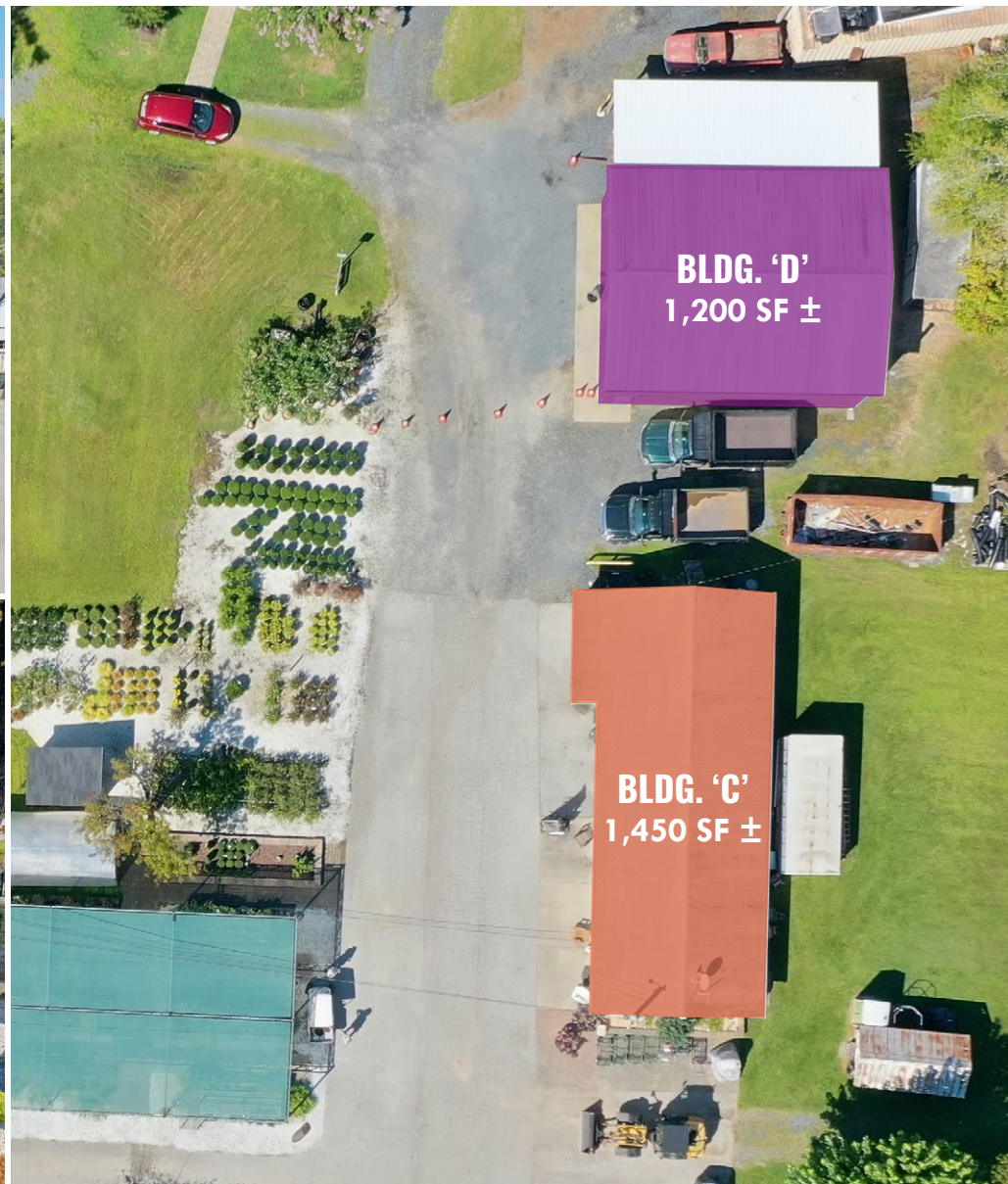
MacKenzie Commercial Real Estate Services, LLC • 443-573-3200 • 111 S. Calvert Street, Suite 2800 | Baltimore, Maryland 21202 • www.MACKENZIECOMMERCIAL.com

FOR SALE

Baltimore County, MD

BUILDINGS 'C' & 'D': OFFICE / WAREHOUSE

314 EARLS ROAD | MIDDLE RIVER, MARYLAND 21220



FOR SALE



Baltimore County, MD

INDUSTRIAL TRADE AREA

314 EARLS ROAD | MIDDLE RIVER, MARYLAND 21220

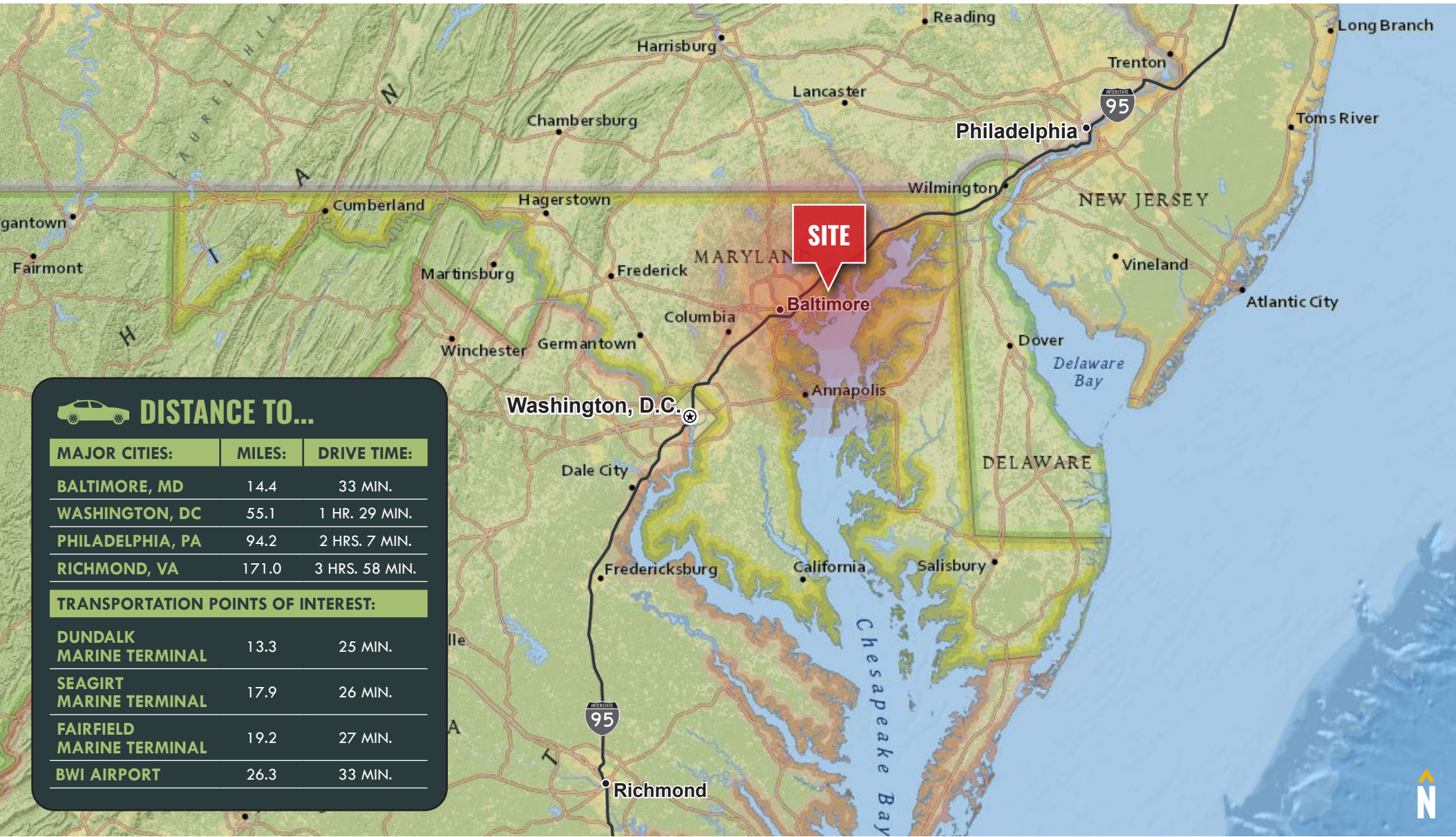


FOR SALE

Baltimore County, MD

LOCATION

314 EARLS ROAD | MIDDLE RIVER, MARYLAND 21220



DISTANCE TO...

MAJOR CITIES:	MILES:	DRIVE TIME:
BALTIMORE, MD	14.4	33 MIN.
WASHINGTON, DC	55.1	1 HR. 29 MIN.
PHILADELPHIA, PA	94.2	2 HRS. 7 MIN.
RICHMOND, VA	171.0	3 HRS. 58 MIN.
TRANSPORTATION POINTS OF INTEREST:		
DUNDALK MARINE TERMINAL	13.3	25 MIN.
SEAGIRT MARINE TERMINAL	17.9	26 MIN.
FAIRFIELD MARINE TERMINAL	19.2	27 MIN.
BWI AIRPORT	26.3	33 MIN.



ANDREW MEEDER, SIOR

SENIOR VICE PRESIDENT & PRINCIPAL

MACKENZIE COMMERCIAL REAL ESTATE SERVICES, LLC

410.494.4881

AMEEDER@MACKENZIECOMMERCIAL.COM

MATTHEW CURRAN, SIOR

VICE PRESIDENT

MACKENZIE COMMERCIAL REAL ESTATE SERVICES, LLC

443.573.3203

MCURRAN@MACKENZIECOMMERCIAL.COM

DANIEL HUDAK, SIOR

SENIOR VICE PRESIDENT & PRINCIPAL

MACKENZIE COMMERCIAL REAL ESTATE SERVICES, LLC

443.573.3205

DHUDAK@MACKENZIECOMMERCIAL.COM

MacKenzie Commercial Real Estate Services, LLC • 410-821-8585 • 111 S. Calvert Street | Baltimore, Maryland 21202 • www.MACKENZIECOMMERCIAL.COM

No warranty or representation, expressed or implied, is made as to the accuracy of the information contained herein, and same is submitted subject to errors, omissions, change of price, rental or other conditions, withdrawal without notice, and to any specific listing conditions imposed by our principals.