



SERVICE WAREHOUSE

405 LABURNUM ROAD | EDGEWOOD, MARYLAND 21040

FOR
SALE



MACKENZIE

COMMERCIAL REAL ESTATE SERVICES, LLC

PROPERTY OVERVIEW

HIGHLIGHTS:

- 3,035 SF \pm service warehouse on .285 acres \pm
- Entirely conditioned warehouse
- Three (3) oversized drive-in doors
- Recent renovations
- Office space
- Full building generator
- Ideal for a variety of uses
- Close proximity to Route 40 and I-95, providing easy access to the entire Mid-Atlantic region

BUILDING SIZE:	3,035 SF \pm
----------------	----------------

LOT SIZE:	.285 ACRES \pm
-----------	------------------

CLEAR HEIGHT:	16' \pm
---------------	-----------

DRIVE-INS:	3 (12' x 12')
------------	---------------

POWER:	SINGLE PHASE 200 AMPS
--------	-----------------------

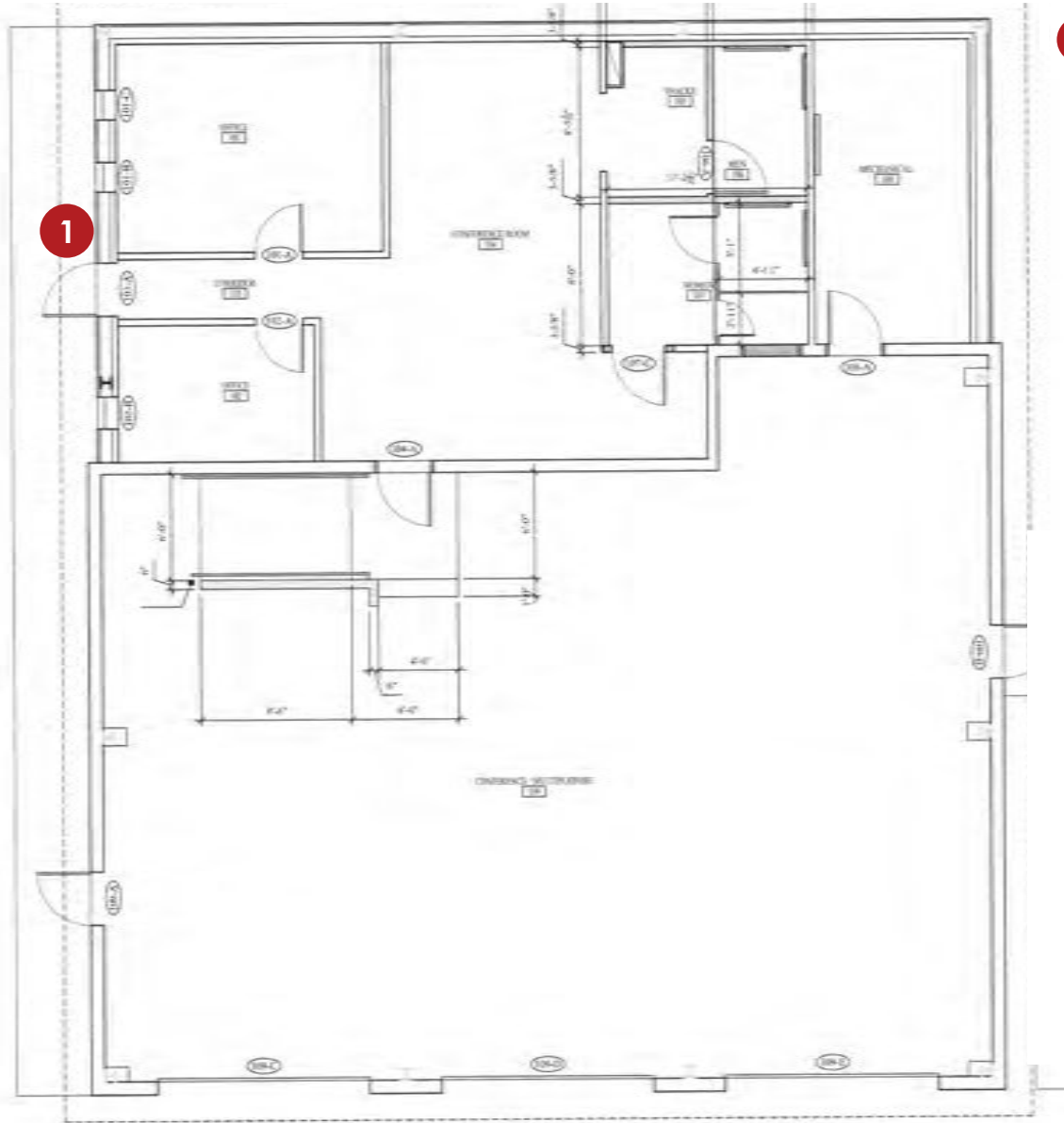
ZONING:	B1 (NEIGHBORHOOD BUSINESS DIST.)
---------	----------------------------------

SALE PRICE:	NEGOTIABLE
-------------	------------



GOOGLE STREET VIEW

FLOOR PLAN



TRADE AREA

DRIVING DISTANCE TO:

24 2.4 MILES
4 MIN. DRIVE

40 2.7 MILES
5 MIN. DRIVE

95 4.4 MILES
7 MIN. DRIVE

PORT OF BALTIMORE
1706
Helen Delich Bentley
26.5 MILES
30 MIN. DRIVE
(SEAGIRT MARINE TERMINAL)

BWI
BALTIMORE/WASHINGTON
INTERNATIONAL
THURGOOD MARSHALL
AIRPORT
36.6 MILES
36 MIN. DRIVE

BALTIMORE, MD 25.9 MILES
35 MIN.

WASHINGTON, DC 64.5 MILES
1 HR. 20 MIN.

PHILADELPHIA, PA 84.0 MILES
1 HR. 20 MIN.

RICHMOND, VA 174.0 MILES
3 HRS. 0 MIN.



FOR MORE INFO CONTACT:

**ANDREW MEEDER, SIOR**

SENIOR VICE PRESIDENT & PRINCIPAL

410.494.4881

AMEEDER@mackenziecommercial.com

**MATTHEW CURRAN, SIOR**

SENIOR VICE PRESIDENT & PRINCIPAL

443.573.3203

MCURRAN@mackenziecommercial.com

**ALTON CURRY**

REAL ESTATE ADVISOR

443.841.9780

ACURRY@mackenziecommercial.com



VISIT **PROPERTY PAGE** FOR MORE INFORMATION.



MACKENZIE

COMMERCIAL REAL ESTATE SERVICES, LLC

443-573-3200

111 S. Calvert Street
Baltimore, MD 21202

OFFICES IN: ANNAPOLIS, MD **BALTIMORE, MD** BEL AIR, MD COLUMBIA, MD LUTHERVILLE, MD CHARLOTTESVILLE, VA

www.MACKENZIECOMMERCIAL.com

No warranty or representation, expressed or implied, is made as to the accuracy of the information contained herein, and same is submitted subject to errors, omissions, change of price, rental or other conditions, withdrawal without notice, and to any specific listing conditions imposed by our principals.

INTERIOR PHOTOS

