



WATER'S EDGE CORPORATE CAMPUS

4692, 4694 & 4696 MILLENNIUM DR | BELCAMP, MD 21017

FOR
LEASE



4696
MILLENNIUM
DRIVE

4694
MILLENNIUM
DRIVE

4692
MILLENNIUM
DRIVE

BUSH RIVER



MACKENZIE
COMMERCIAL REAL ESTATE SERVICES, LLC

PROPERTY OVERVIEW

HIGHLIGHTS:

- Class A office space with scenic waterfront views of Bush River
- Close proximity to Aberdeen Proving Ground
- Easy commute via I-95 to Wilmington DE, Philadelphia PA, Baltimore MD, and Washington DC
- Parking ratio: 4/1,000sf
- Ideal for Government Contractors, Medical, Law, Accounting, or other professional services.

BUILDING:

4692 MILLENNIUM DR

AVAILABLE:

2ND FLOOR: 5,486 SF
3RD FLOOR: 3,796 - 6,534 SF
4TH FLOOR: 9,172 SF

BUILDING SIZE:

79,687 SF

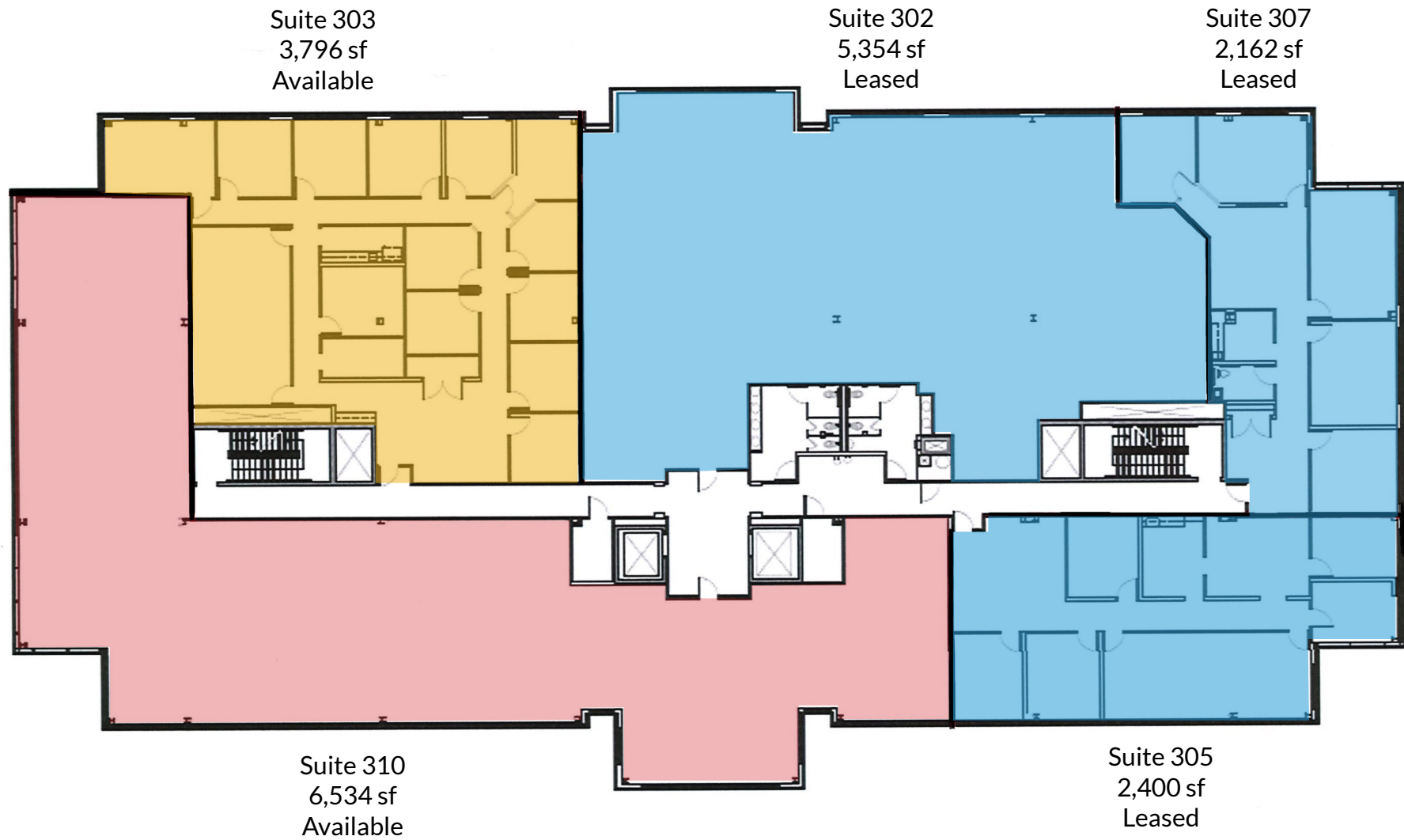
RENTAL RATE:

\$24.00/SF, FULL SERVICE



FLOOR PLAN: 4692

3rd Floor



PROPERTY OVERVIEW

HIGHLIGHTS:

- Class A office space with scenic waterfront views of Bush River
- Close proximity to Aberdeen Proving Ground
- Easy commute via I-95 to Wilmington DE, Philadelphia PA, Baltimore MD, and Washington DC
- Parking ratio: 4/1,000sf
- Ideal for Government Contractors, Medical, Law, Accounting, or other professional services.

BUILDING:

4694 MILLENNIUM DR

AVAILABLE:

LL FLOOR: 1,393 - 8,450 SF
1ST FLOOR: 1,388 - 2,556 SF
2ND FLOOR: 1,996 - 3,351 SF
3RD FLOOR: 5,638 - 14,806 SF
5TH FLOOR: 3,172 SF
SUITE LOSS: 1,953 SF

BUILDING SIZE:

100,379 SF

RENTAL RATE:

\$24.00/SF, FULL SERVICE

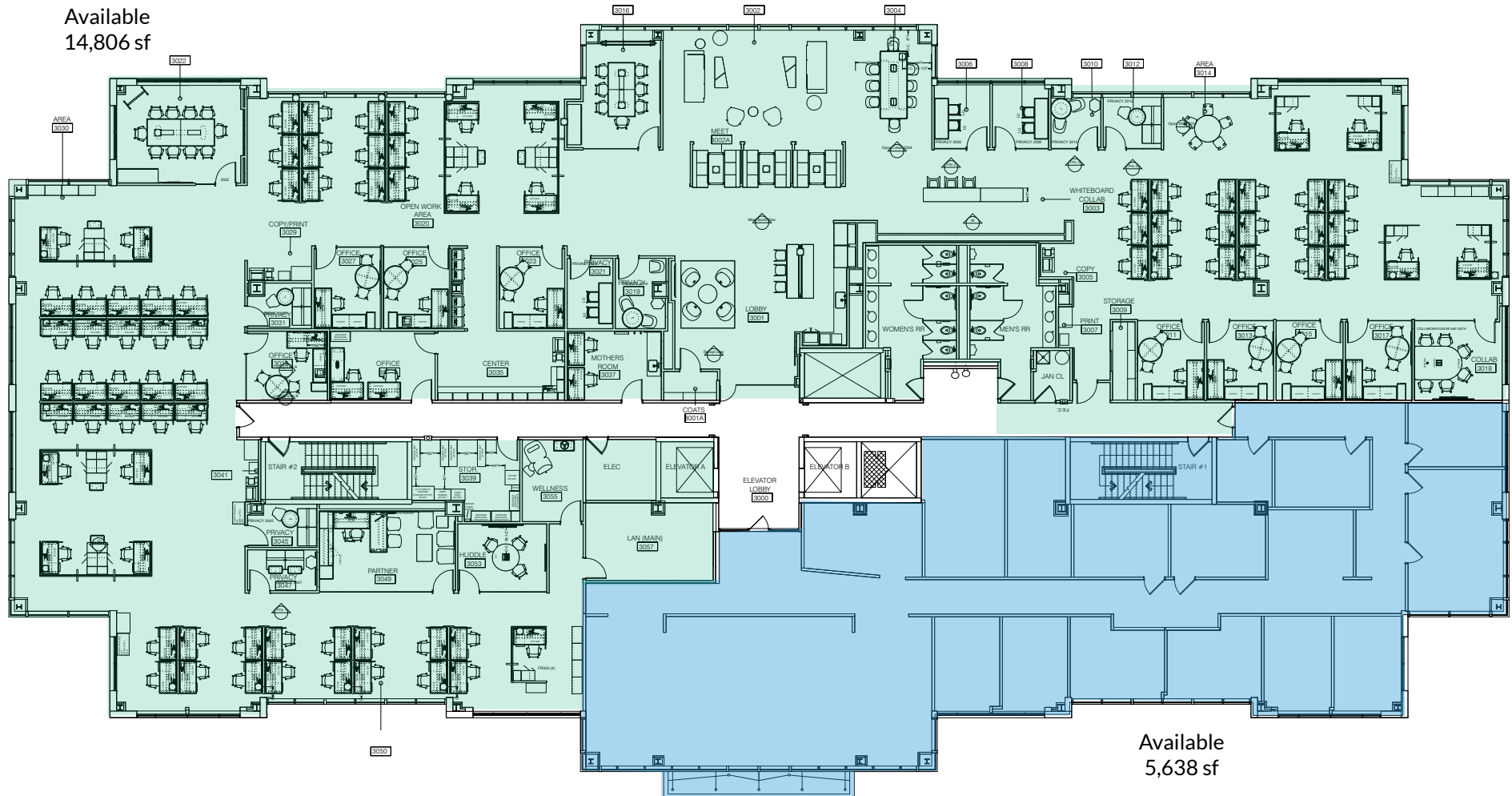


FLOOR PLAN: 4694

1st Floor



3rd Floor



FLOOR PLAN: 4694

5th Floor



PROPERTY OVERVIEW

HIGHLIGHTS:

- Class A office space with scenic waterfront views of Bush River
- Close proximity to Aberdeen Proving Ground
- Easy commute via I-95 to Wilmington DE, Philadelphia PA, Baltimore MD, and Washington DC
- Parking ratio: 4/1,000sf
- Ideal for Government Contractors, Medical, Law, Accounting, or other professional services.

BUILDING:

4696 MILLENNIUM DR

AVAILABLE:

1ST FLOOR: 1,482 - 4,700 SF
2ND FLOOR: 13,636 SF
3RD FLOOR: 5,254 - 7,215 SF
4TH FLOOR: 14,008 SF
5TH FLOOR: 17,549 SF
SUITE CORE: 1,494 SF

BUILDING SIZE:

123,000 SF

RENTAL RATE:

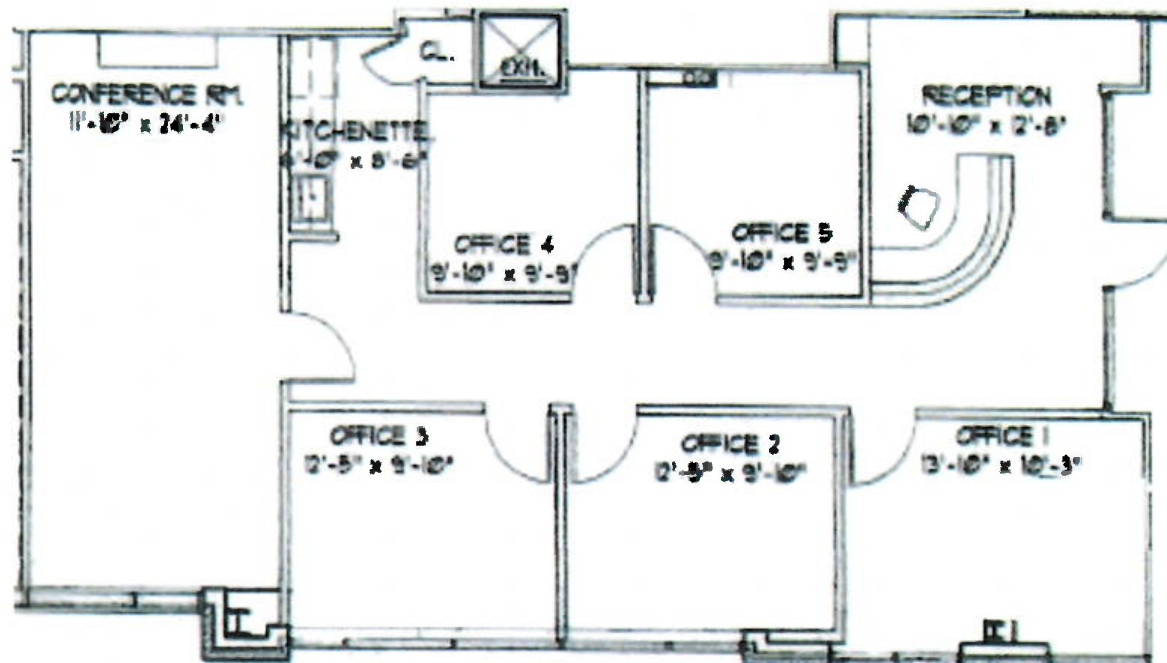
\$24.00/SF, FULL SERVICE



GOOGLE STREET VIEW

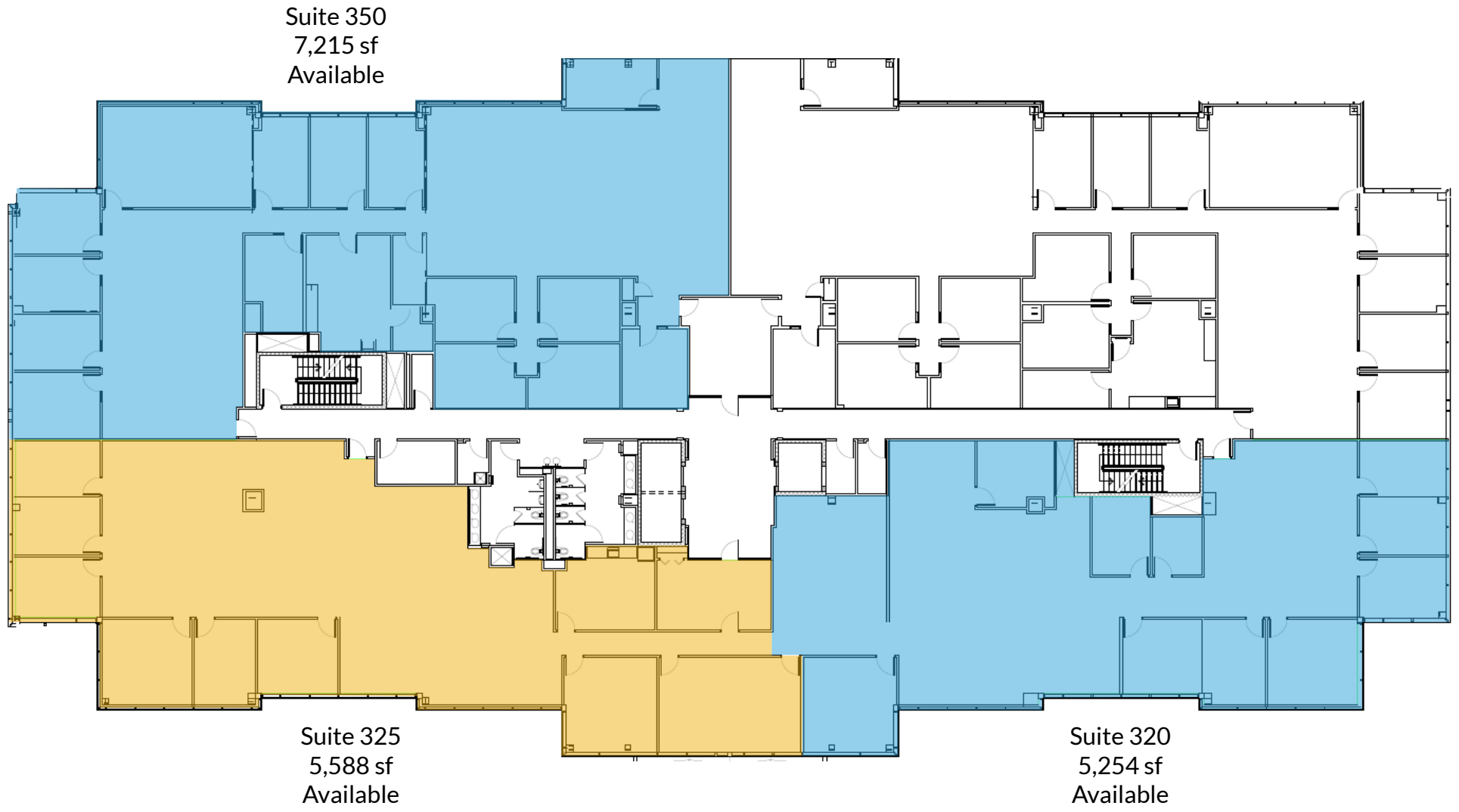
FLOOR PLAN: 4696

Suite 110 - 1,482 SF



FLOOR PLAN: 4696

3rd Floor



FLOOR PLAN: 4696

5th Floor



Suite 550
11,584 sf
Available

DEMOGRAPHICS

2023

RADIUS:

1 MILE

3 MILES

5 MILES

RESIDENTIAL POPULATION



5,084

24,440

76,292

DAYTIME POPULATION



4,564

19,783

66,080

AVERAGE HOUSEHOLD INCOME



\$103,915

\$121,710

\$114,627

NUMBER OF HOUSEHOLDS



1,984

9,280

29,282

MEDIAN AGE

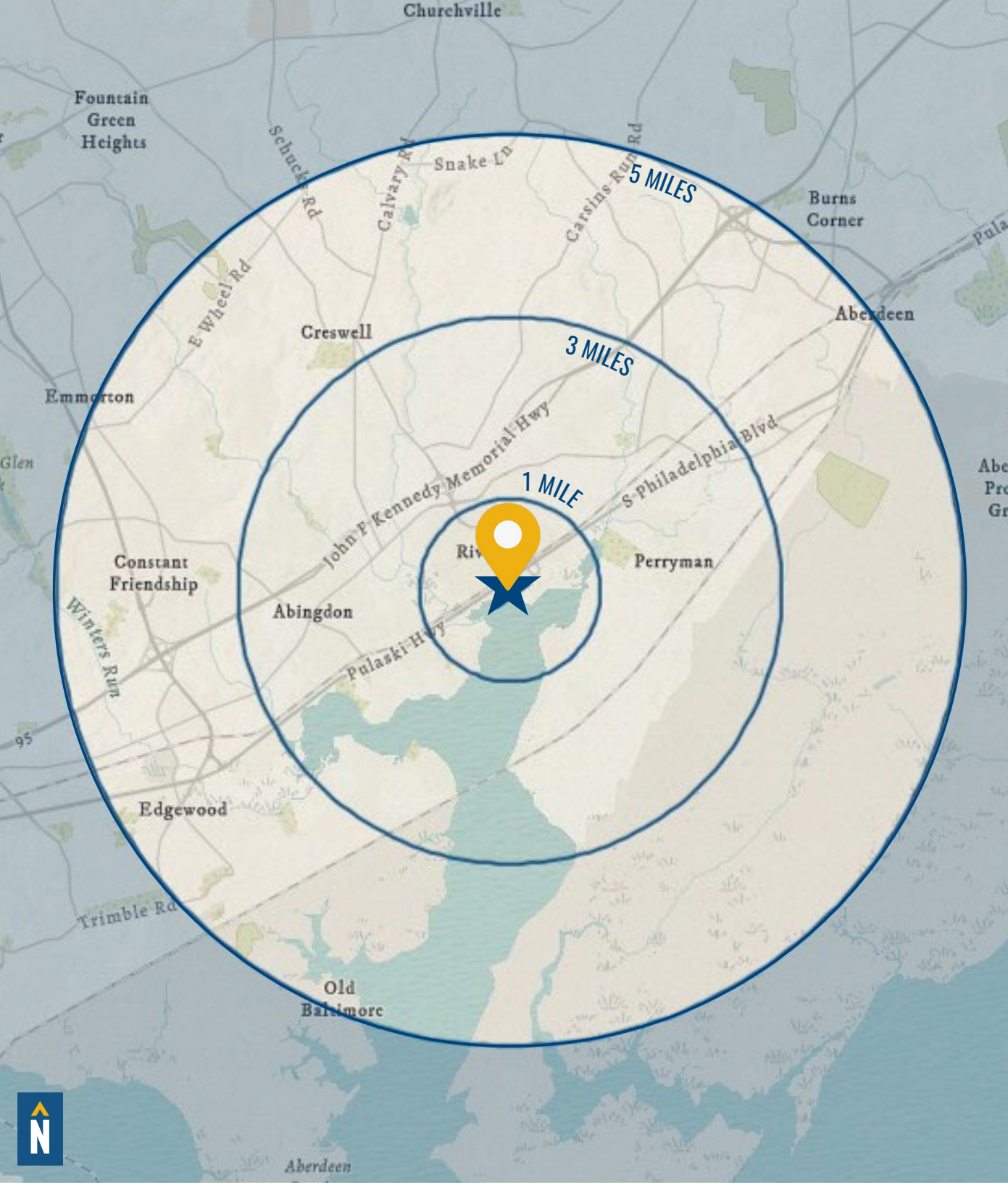


37.4

37.7

37.8

FULL DEMOS REPORT



FOR MORE INFO **CONTACT:**



JOE BRADLEY

SENIOR VICE PRESIDENT & PRINCIPAL

410.494.4892

JBRADLEY@mackenziecommercial.com



TOM MOTTLEY

SENIOR VICE PRESIDENT & PRINCIPAL

443.573.3217

TMOTTLEY@mackenziecommercial.com



BEETLE SMITH

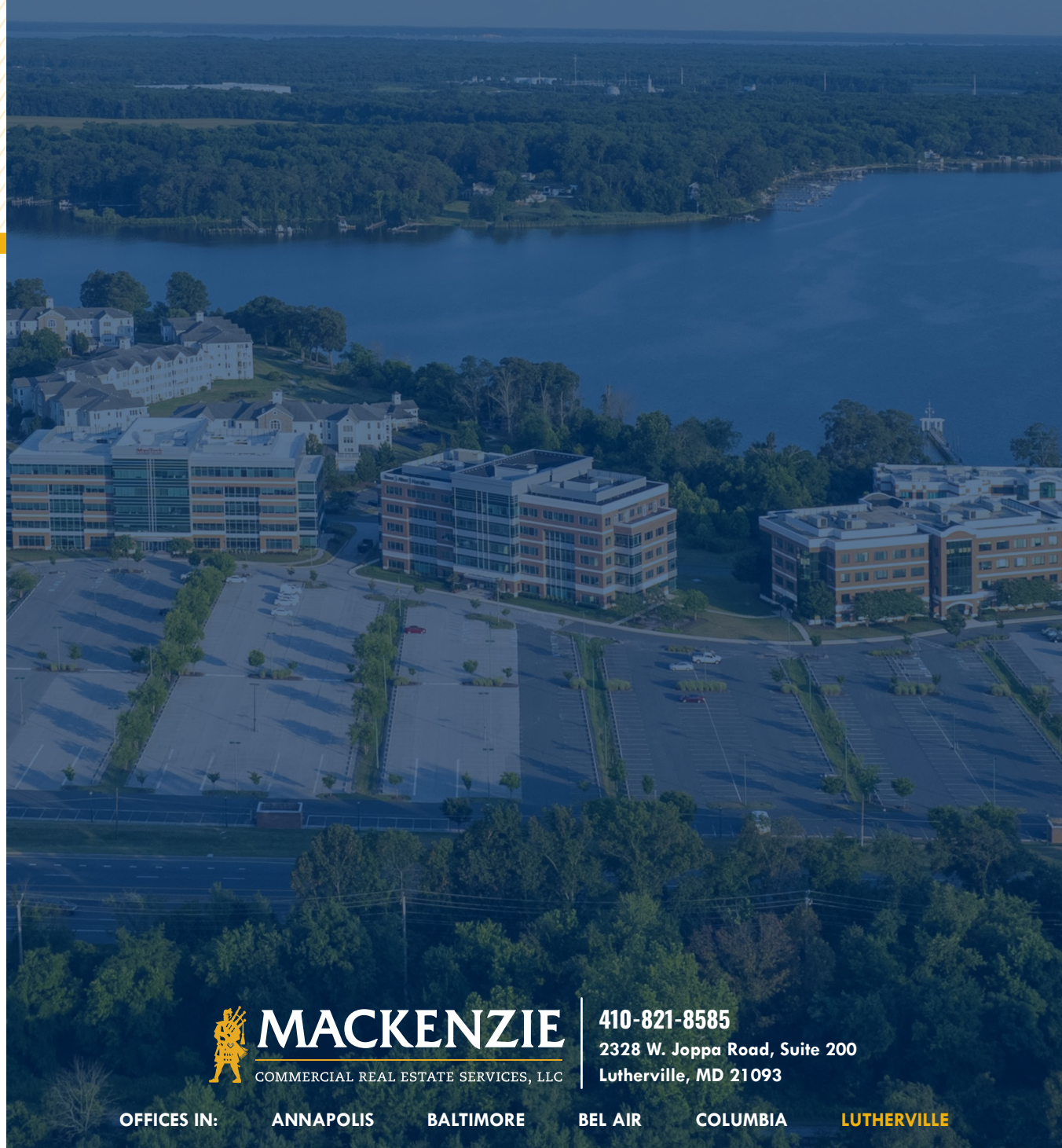
SENIOR VICE PRESIDENT

443.573.3219

BSMITH@mackenziecommercial.com



VISIT **PROPERTY PAGE** FOR MORE INFORMATION.



MACKENZIE

COMMERCIAL REAL ESTATE SERVICES, LLC

410-821-8585

**2328 W. Joppa Road, Suite 200
Lutherville, MD 21093**

OFFICES IN:

ANNAPOLIS

BALTIMORE

BEL AIR

COLUMBIA

LUTHERVILLE

www.MACKENZIECOMMERCIAL.com

No warranty or representation, expressed or implied, is made as to the accuracy of the information contained herein, and same is submitted subject to errors, omissions, change of price, rental or other conditions, withdrawal without notice, and to any specific listing conditions imposed by our principals.