

SALE/LEASE

Harford County, Maryland

4692 MILLENNIUM DRIVE

BELCAMP, MD 21017

AVAILABLE FOR LEASE

927 sf - 3,140 sf on the first floor

CONDO SIZE

18,897 sf on the first floor

BUILDING SIZE

79,687 sf

RENTAL RATE

\$24.00/sf, Full Service

SALE PRICE

\$3,500,000

PARKING RATIO

4.00/1,000 SF

HIGHLIGHTS

- ▶ Located at Water's Edge Corporate Campus
- ▶ Class A Office Condo with scenic waterfront views of the Bush River
- ▶ Easy access to I-95
- ▶ Close proximity to Aberdeen Proving Ground



Beetle Smith | Senior Vice President

☎ 443.573.3219 ✉ bsmith@mackenziecommercial.com

MacKenzie Commercial Real Estate Services, LLC • 410-879-1900 • 3465 Box Hill Corporate Center Drive, Suite F | Abingdon, Maryland 21009 • www.MACKENZIECOMMERCIAL.com

Tom Mottley | Senior Vice President

☎ 443.573.3217 ✉ tmottley@mackenziecommercial.com

SALE/LEASE

Harford County, Maryland

LOCATION

4692 MILLENNIUM DRIVE | BELCAMP, MD 21017

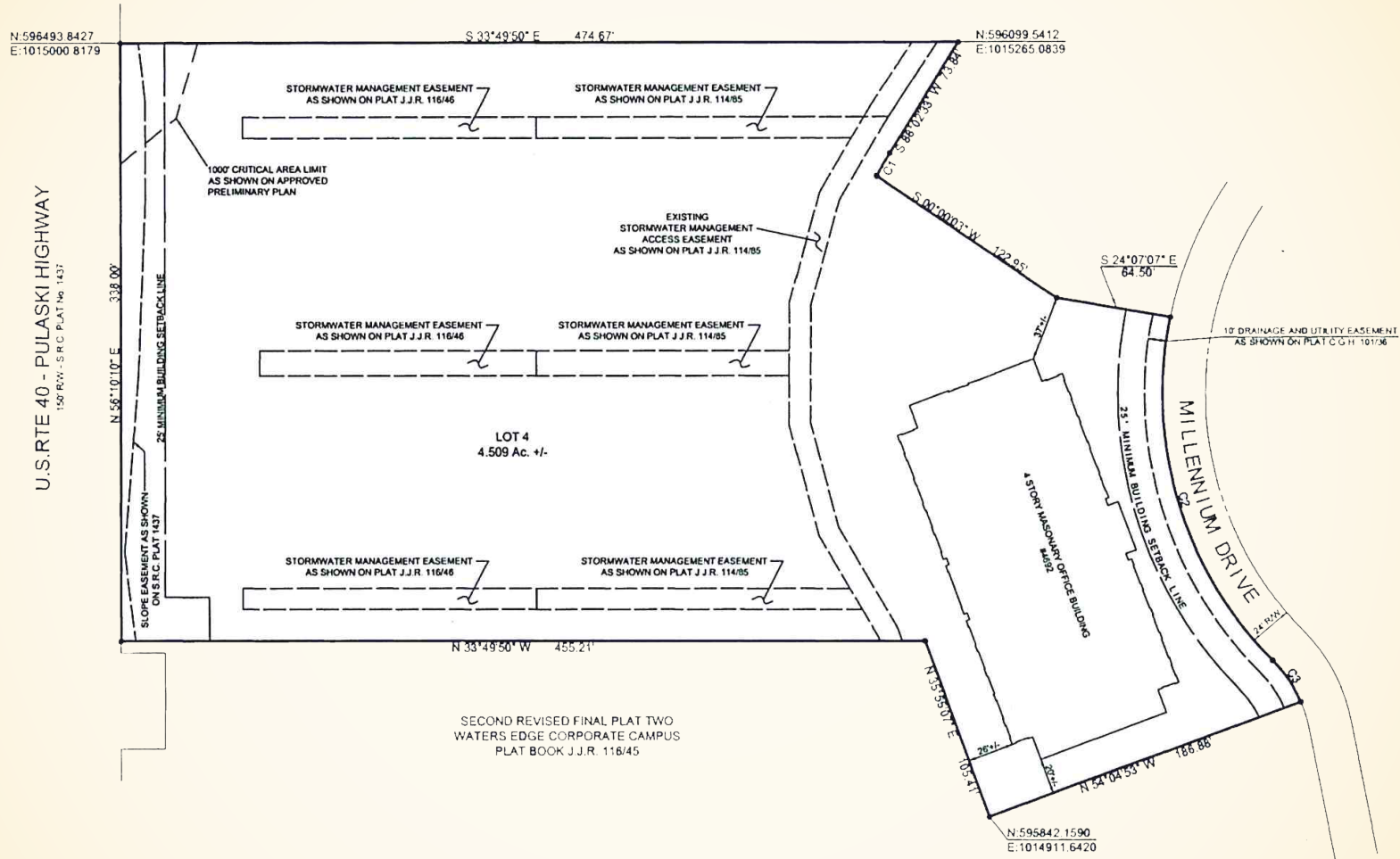


SALE/LEASE

Harford County, Maryland

SITE PLAN

4692 MILLENNIUM DRIVE | BELCAMP, MD 21017



SALE/LEASE

Harford County, Maryland

FIRST FLOOR PLAN

4692 MILLENNIUM DRIVE | BELCAMP, MD 21017

