

# FOR LEASE

Baltimore City, Maryland

# HARBOR COURT

575 S. CHARLES STREET | BALTIMORE, MARYLAND 21201

THE  
RMR  
GROUP

## PARKING

Free Parking - 1:1,000

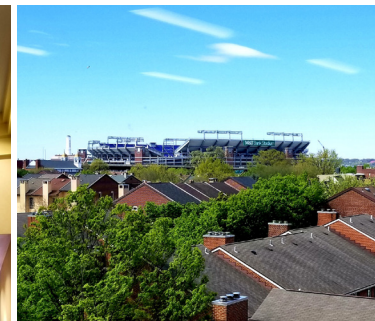
## HIGHLIGHTS

- ▶ Recently renovated lobby and common areas.
- ▶ Inner Harbor location with easy access to I-95 and I-295.
- ▶ Part of a high-end, mixed-use project including the luxury Royal Sonesta Hotel and condominium tower.
- ▶ On-site garage parking.
- ▶ On the Charm City Circulator Purple Route with bike racks available.
- ▶ Office views include Inner Harbor and Ravens Stadium skyline.
- ▶ Access to on-site exercise facility, conference and hotel rooms and coffee shop at the Royal Sonesta.



ELEVATOR LOBBIES, BATHROOMS, AND COMMON AREAS RECENTLY UPDATED!

NEW BROKER INCENTIVE!  
\$50 GIFT CARD &  
ADDITIONAL 1% LEASING  
COMMISSION INCENTIVE  
PER TOUR



**MACKENZIE**  
COMMERCIAL REAL ESTATE SERVICES, LLC

Terri Harrington | Senior Vice President

☎ 443.573.3213 ✉ tharrington@mackenziecommercial.com

MacKenzie Commercial Real Estate Services, LLC • 443-573-3200 • 111 S. Calvert Street, Suite 2800 | Baltimore, Maryland 21202 • www.MACKENZIECOMMERCIAL.com



# FOR LEASE

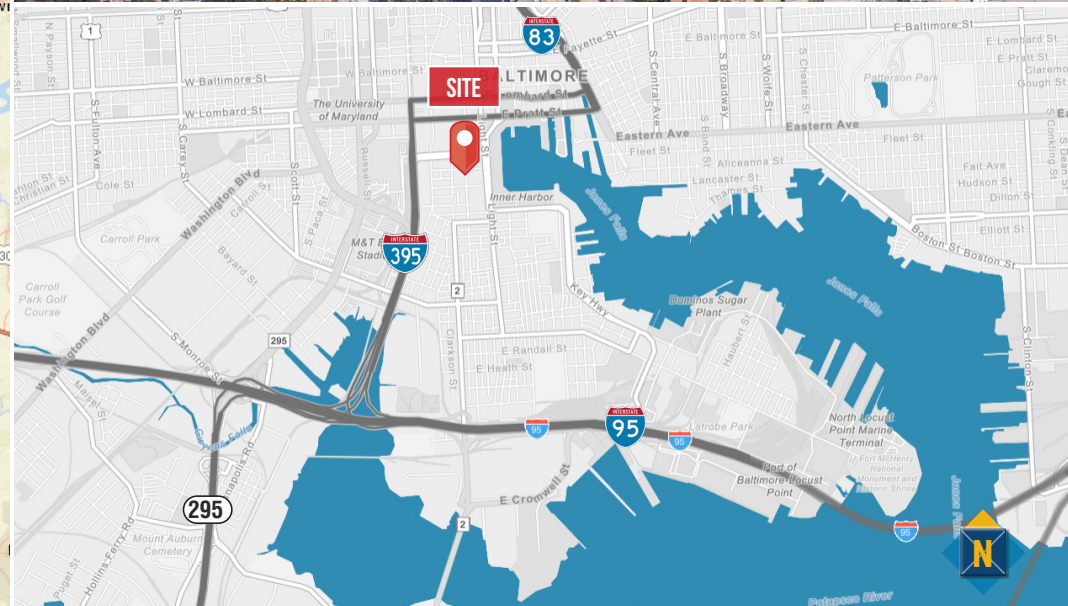
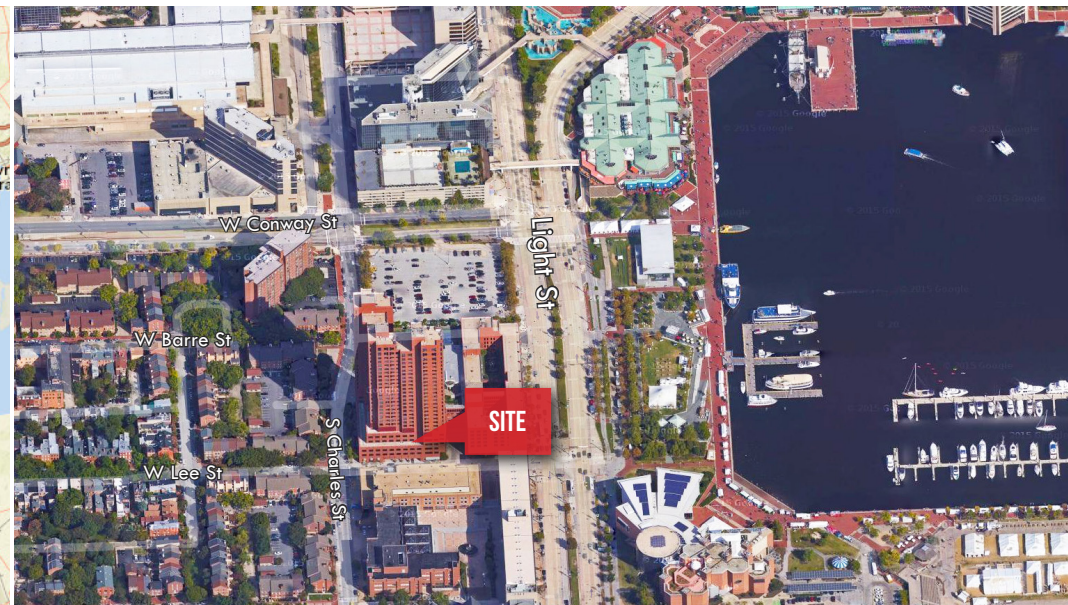
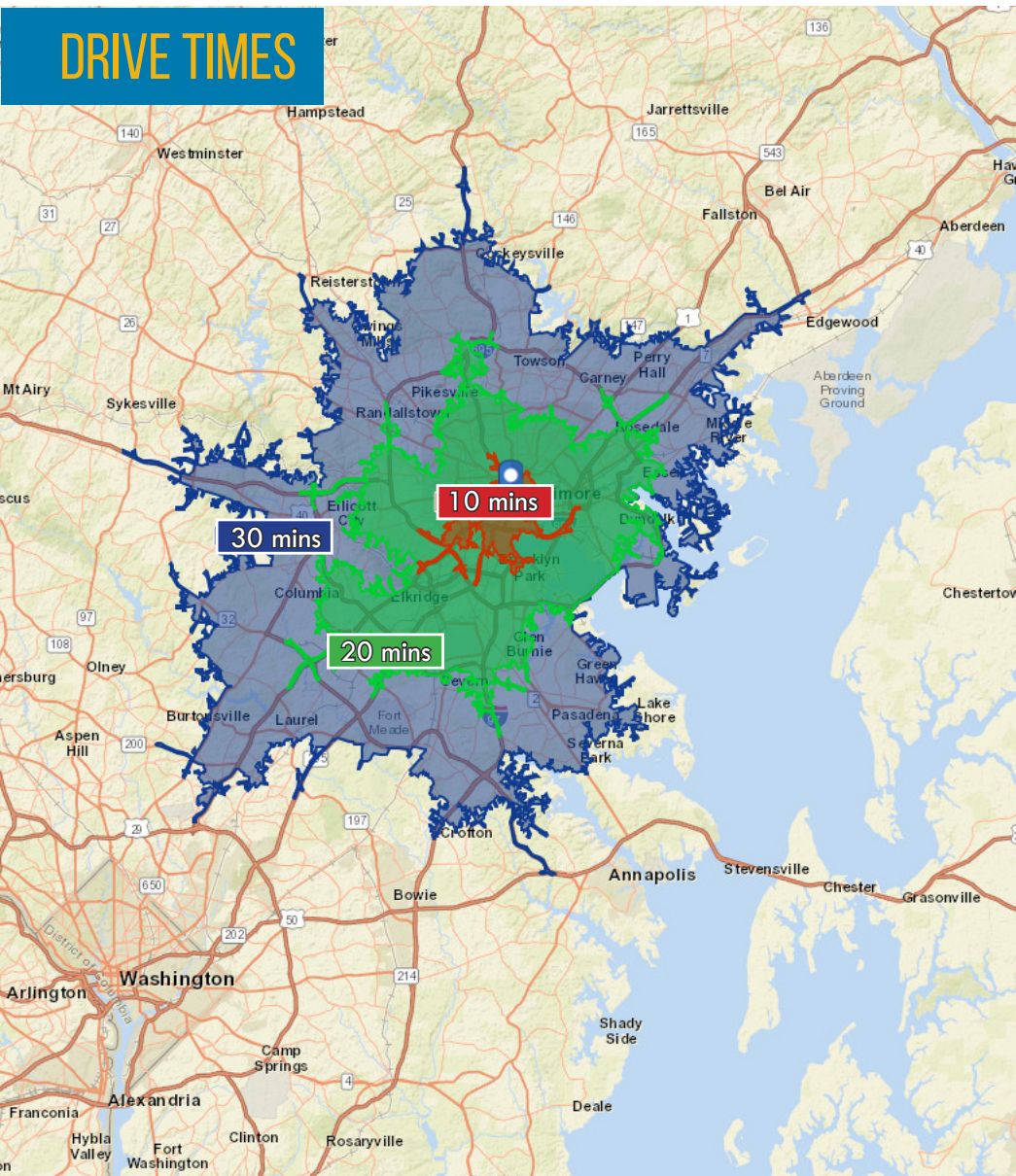
Baltimore City, Maryland

# LOCATION

HARBOR COURT | 575 S CHARLES STREET | BALTIMORE, MARYLAND 21201

THE  
RMR  
GROUP

## DRIVE TIMES





# FOR LEASE

Baltimore City, Maryland

# FLOOR PLANS

HARBOR COURT | 575 S CHARLES STREET | BALTIMORE, MARYLAND 21201

THE  
RMR  
GROUP

## SUITE SIZE

130 1,016 sf

140 2,816 sf

150 1,390 sf

203 1,685 sf\*

208 2,042 sf\*

305 3,398 sf

310\*\* 2,291 sf\*\*

315 3,876 sf

400 2,240 sf

402B 746 sf

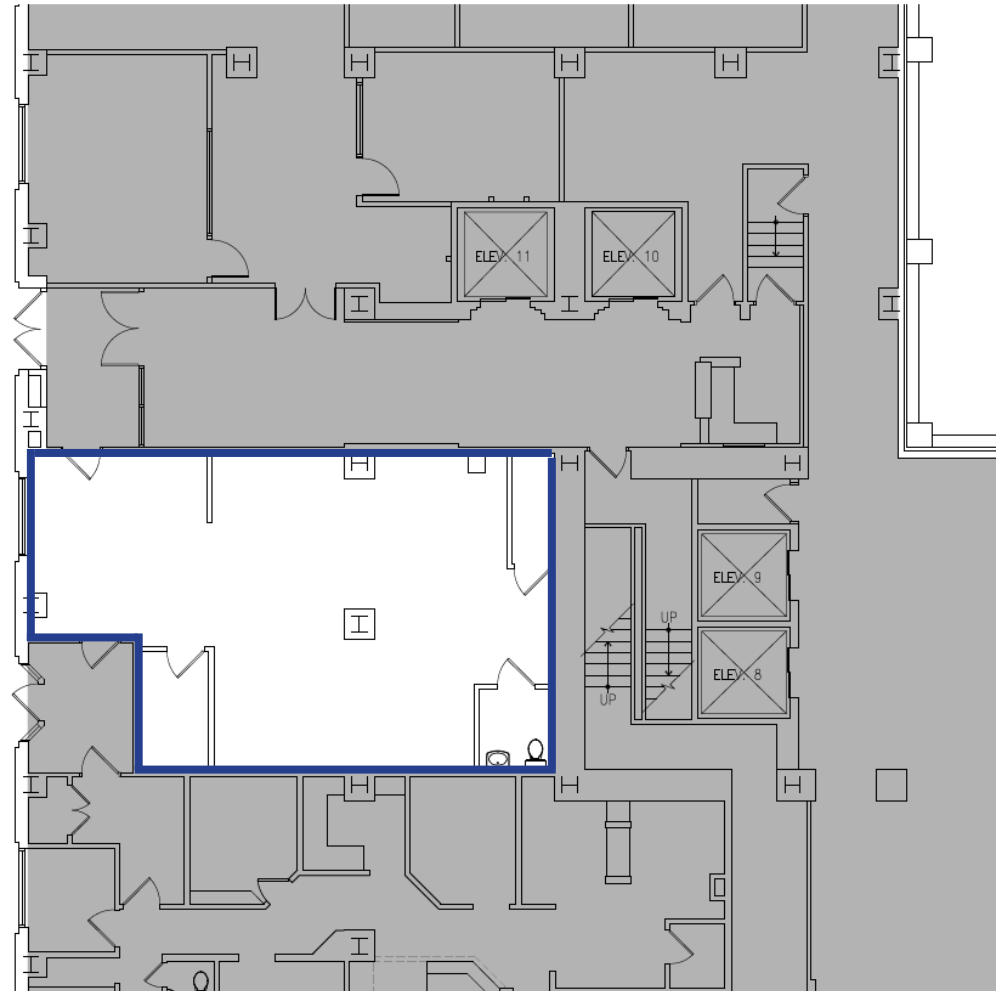
408 1,830 sf

501 3,474 sf

\*2nd floor suites can be combined to total 3,727 sf

\*\* Suite 310 - Available 12/1/2020

## SUITE 130 1,016 SF



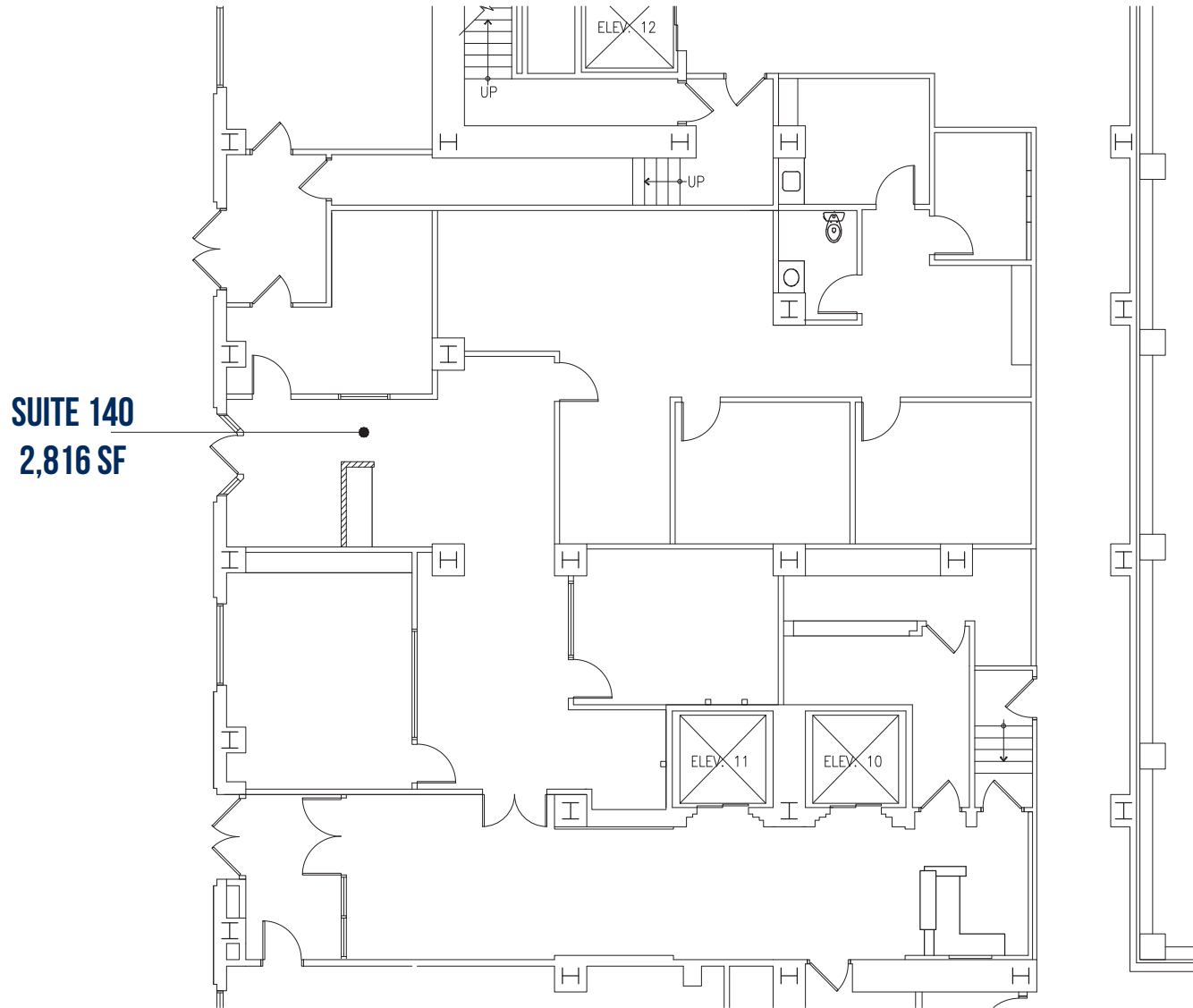
# FOR LEASE

Baltimore City, Maryland

## FLOOR PLANS

HARBOR COURT | 575 S CHARLES STREET | BALTIMORE, MARYLAND 21201

THE  
RMR  
GROUP



# FOR LEASE

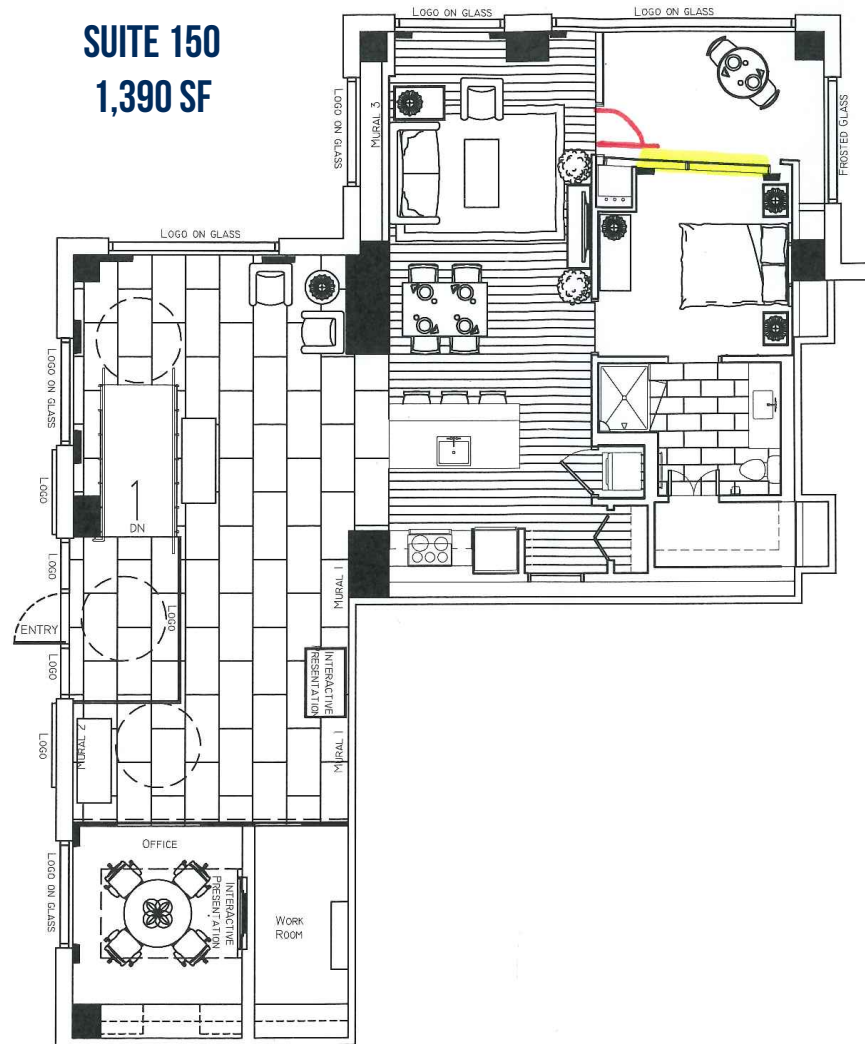
Baltimore City, Maryland

## FLOOR PLANS

HARBOR COURT | 575 S CHARLES STREET | BALTIMORE, MARYLAND 21201

THE  
RMR  
GROUP

**SUITE 150**  
**1,390 SF**



# FOR LEASE

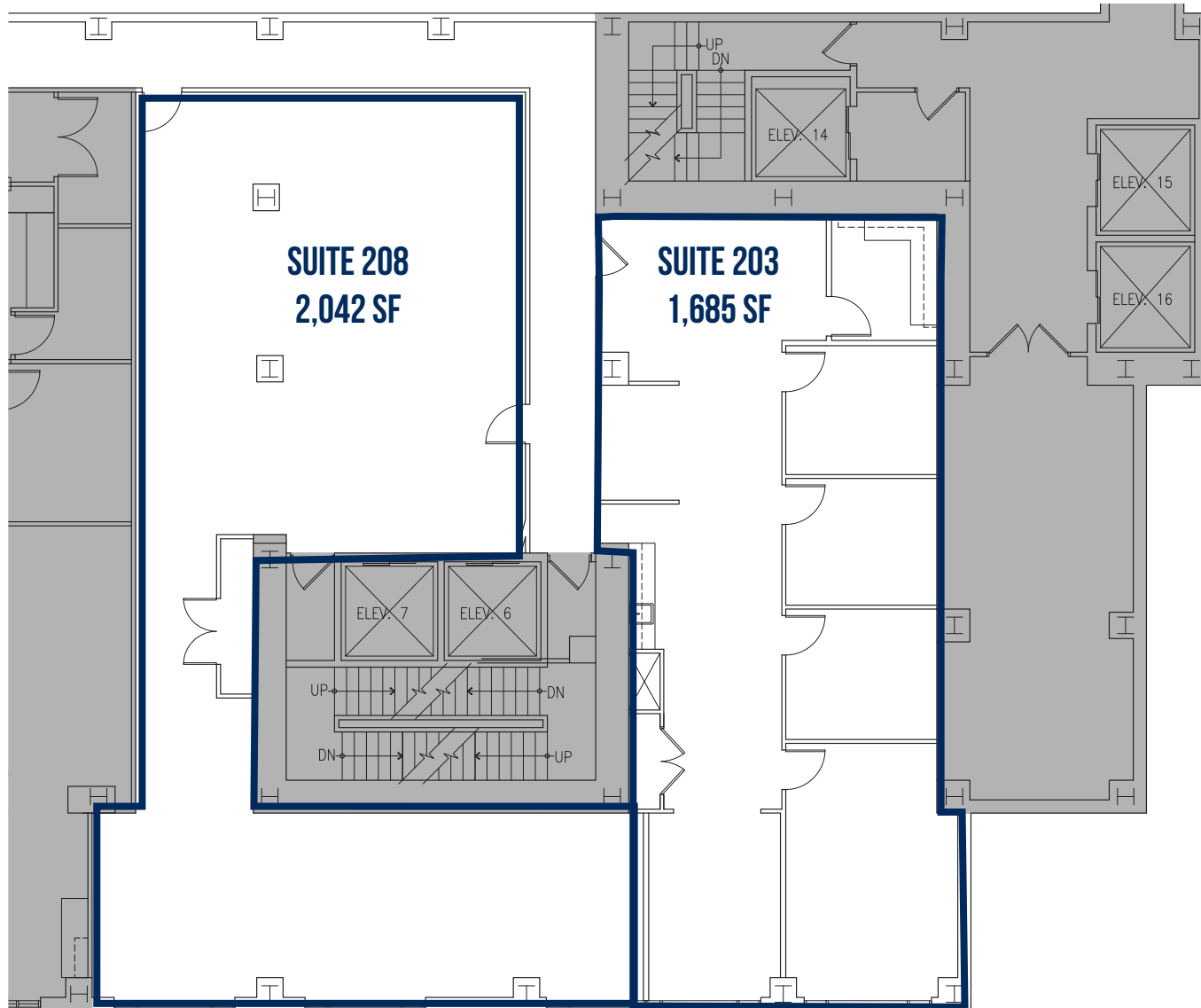
Baltimore City, Maryland

## FLOOR PLANS

HARBOR COURT | 575 S CHARLES STREET | BALTIMORE, MARYLAND 21201

THE  
RMR  
GROUP

SUITES CAN BE COMBINED TO  
A TOTAL OF  
3,727 SF



# FOR LEASE

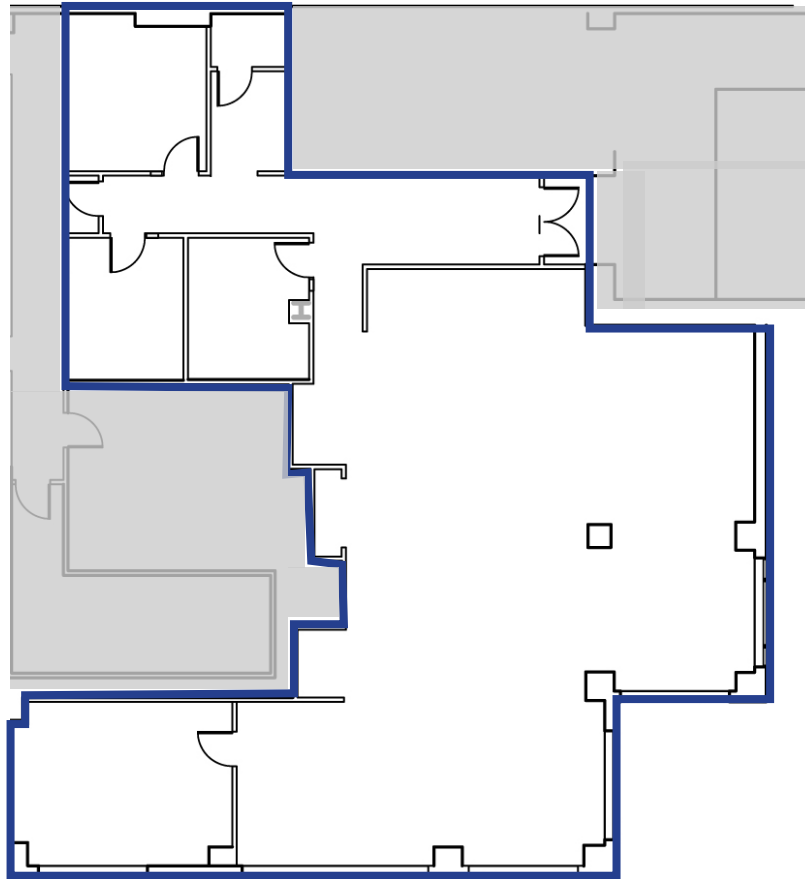
Baltimore City, Maryland

## FLOOR PLANS

HARBOR COURT | 575 S CHARLES STREET | BALTIMORE, MARYLAND 21201

THE  
RMR  
GROUP

SUITE 305  
3,398 SF



# FOR LEASE

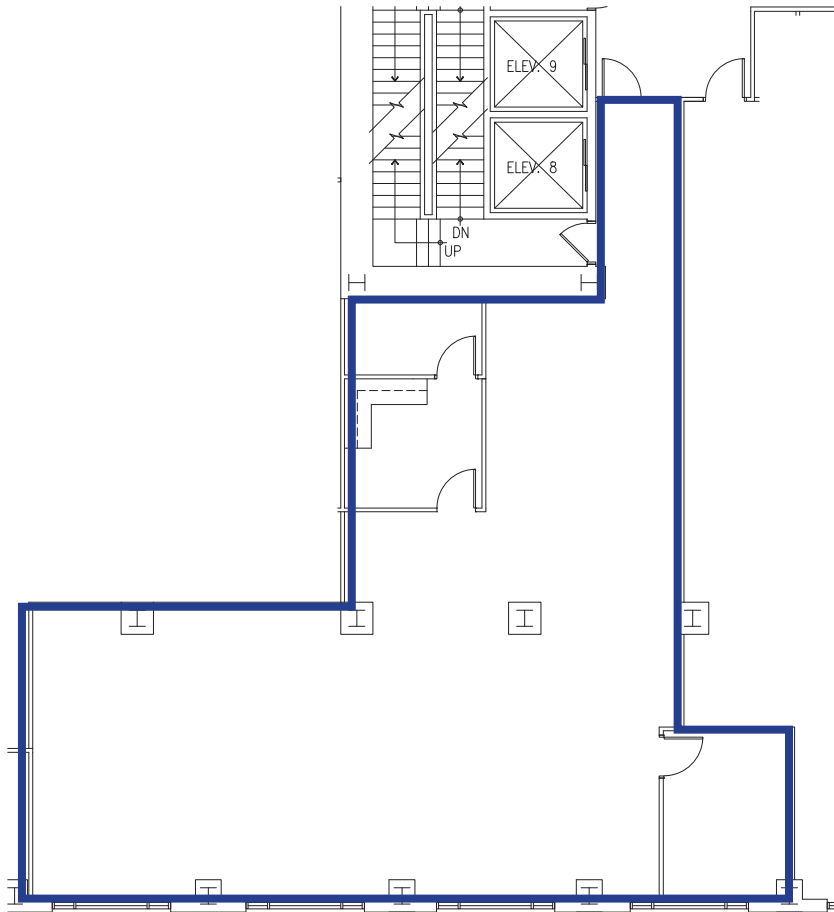
Baltimore City, Maryland

# FLOOR PLANS

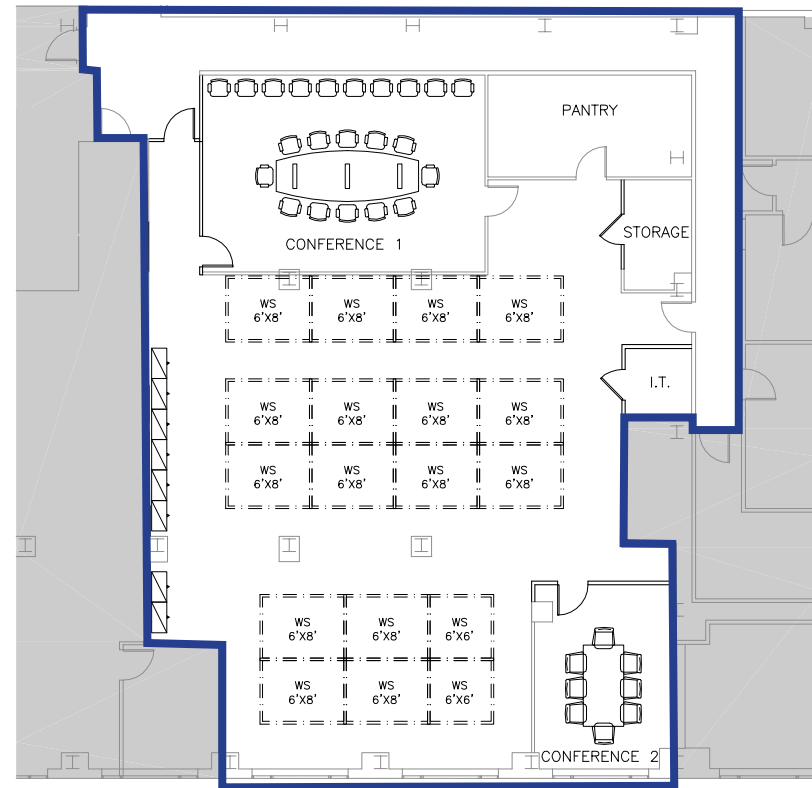
HARBOR COURT | 575 S CHARLES STREET | BALTIMORE, MARYLAND 21201

THE  
RMR  
GROUP

SUITE 310 - AVAILABLE 12/1/2020  
2,291 SF



SUITE 315  
3,876 SF





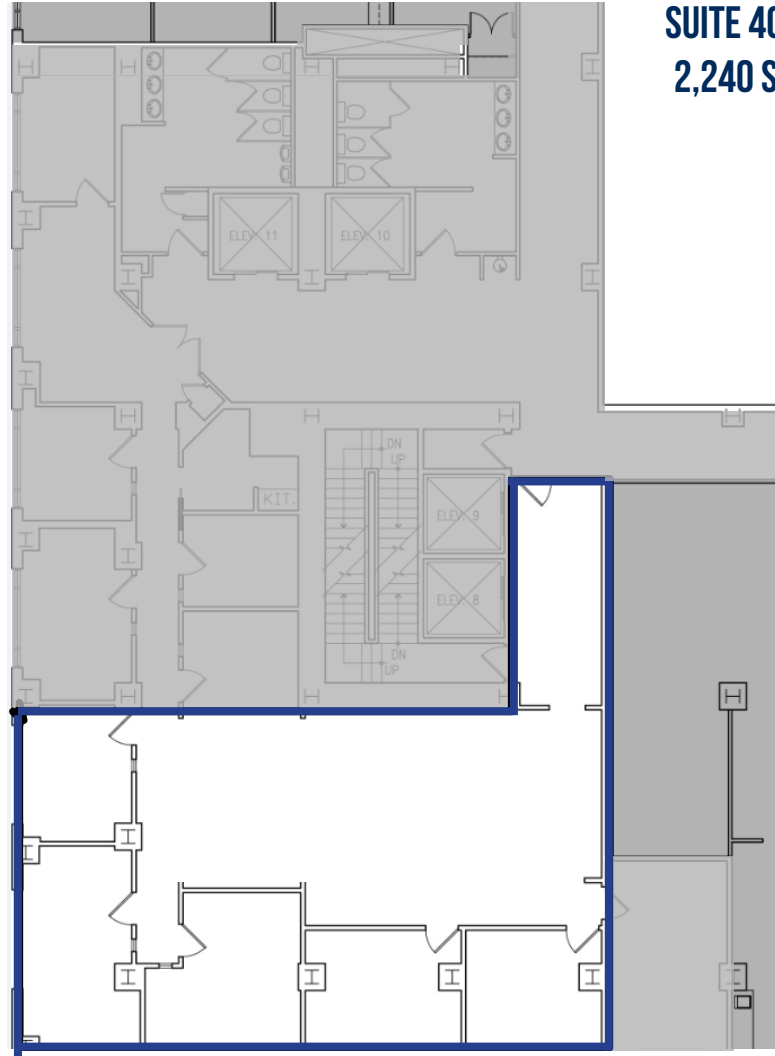
# FOR LEASE

Baltimore City, Maryland

## FLOOR PLANS

HARBOR COURT | 575 S CHARLES STREET | BALTIMORE, MARYLAND 21201

THE  
RMR  
GROUP



SUITE 400  
2,240 SF

# FOR LEASE

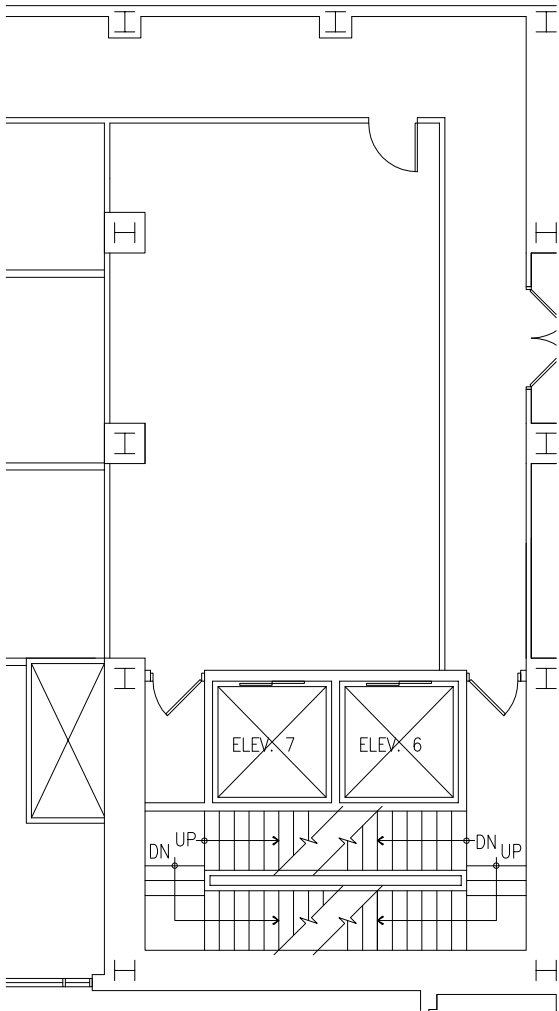
Baltimore City, Maryland

## FLOOR PLANS

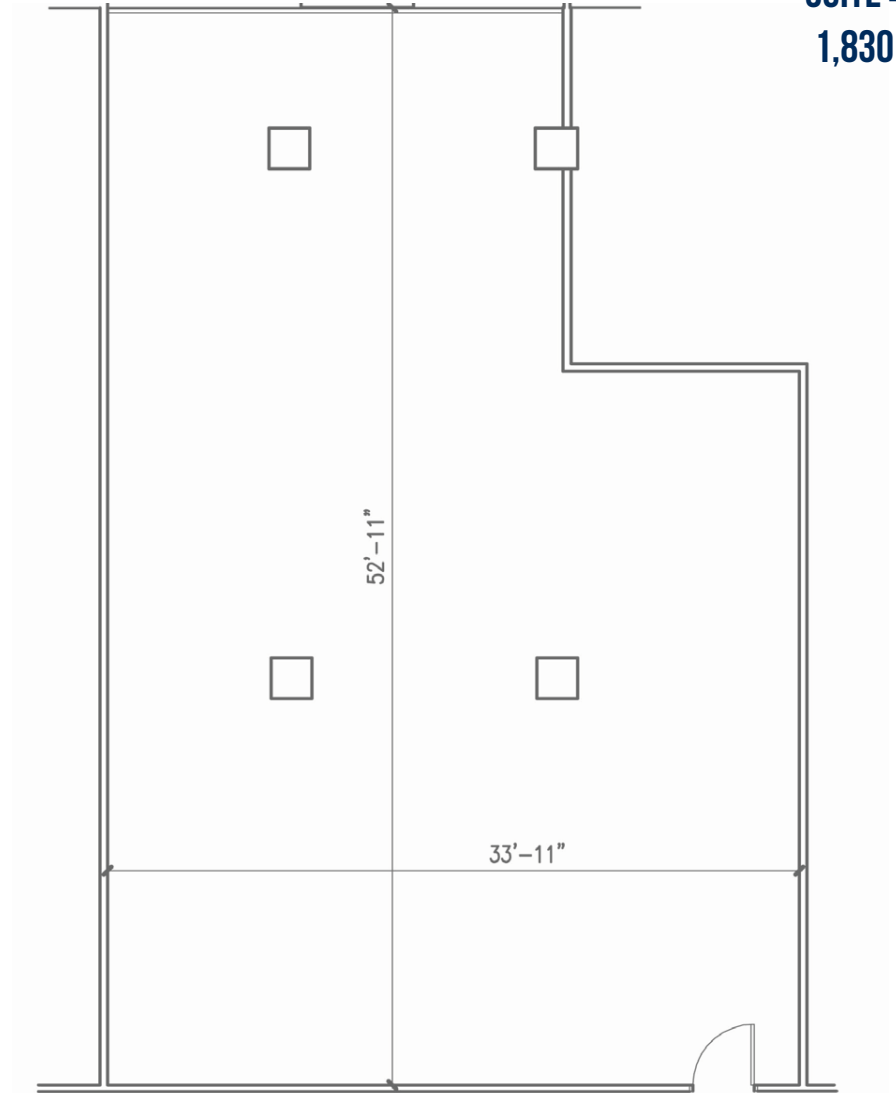
HARBOR COURT | 575 S CHARLES STREET | BALTIMORE, MARYLAND 21201

THE  
RMR  
GROUP

**SUITE 402B**  
**746 SF**



**SUITE 408**  
**1,830 SF**



# FOR LEASE

Baltimore City, Maryland

## FLOOR PLANS

HARBOR COURT | 575 S CHARLES STREET | BALTIMORE, MARYLAND 21201

THE  
RMR  
GROUP

SUITE 501  
3,474 SF

