

# FOR LEASE

Baltimore City, Maryland

# HARBOR COURT

575 S. CHARLES STREET | BALTIMORE, MARYLAND 21201

THE  
RMR  
GROUP

## PARKING

Free Parking - 1:1,000

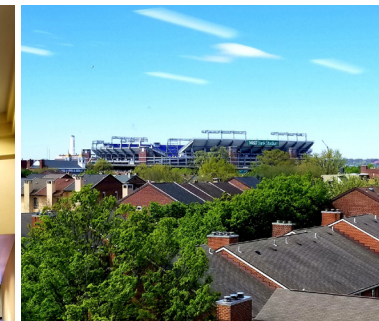
## HIGHLIGHTS

- ▶ Recently renovated lobby and common areas.
- ▶ Inner Harbor location with easy access to I-95 and I-295.
- ▶ Part of a high-end, mixed-use project including the luxury Royal Sonesta Hotel and condominium tower.
- ▶ On-site garage parking.
- ▶ On the Charm City Circulator Purple Route with bike racks available.
- ▶ Office views include Inner Harbor and Ravens Stadium skyline.
- ▶ Access to on-site exercise facility, conference and hotel rooms and coffee shop at the Royal Sonesta.



**ELEVATOR LOBBIES, BATHROOMS, AND COMMON AREAS RECENTLY UPDATED!**

**NEW BROKER INCENTIVE!  
\$50 GIFT CARD &  
ADDITIONAL 1% LEASING  
COMMISSION INCENTIVE  
PER TOUR**





# FOR LEASE

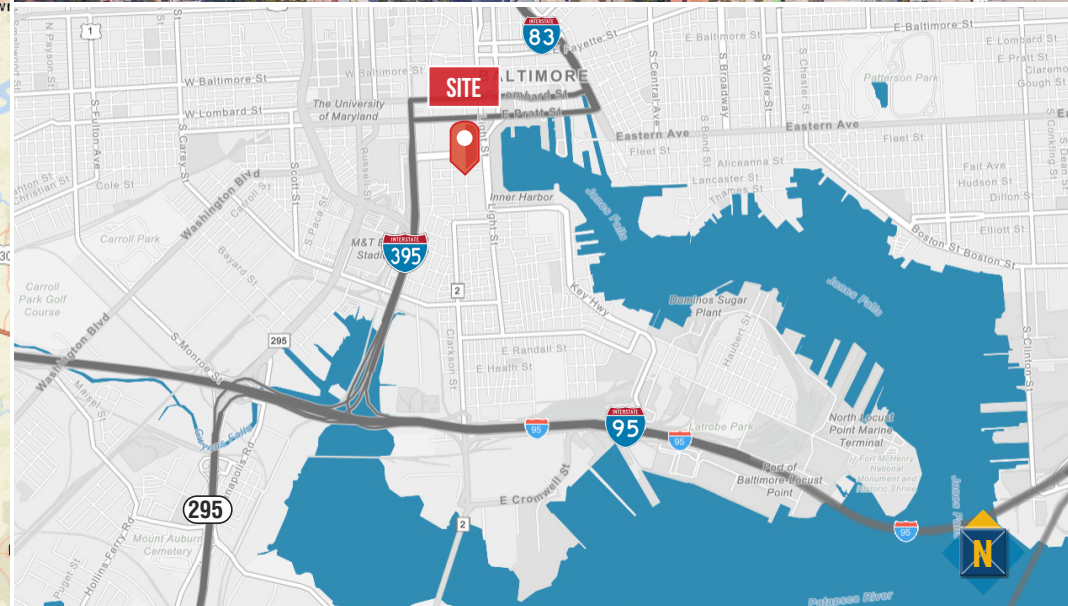
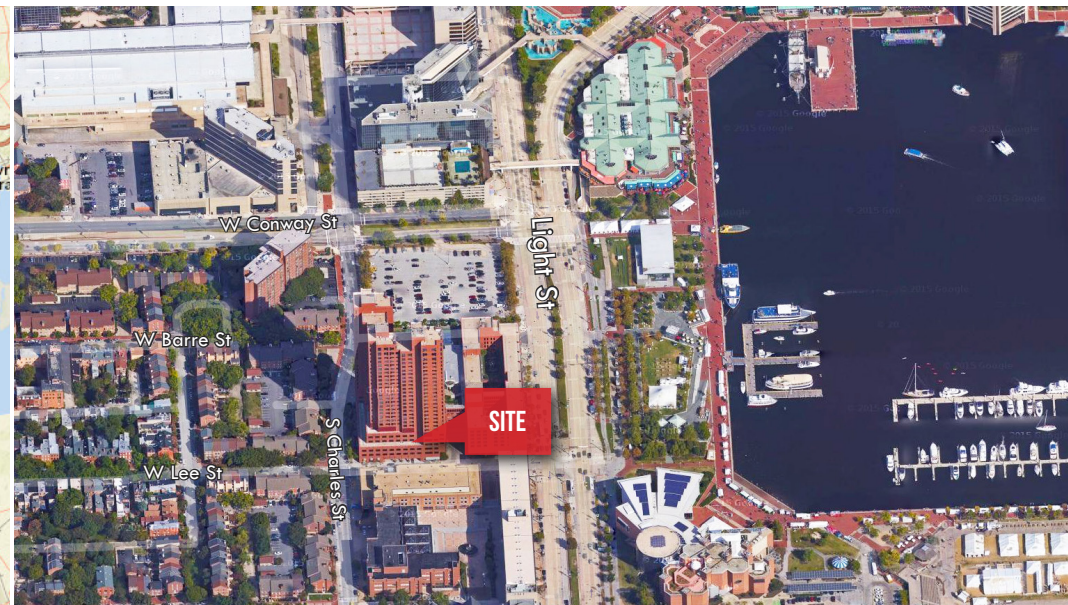
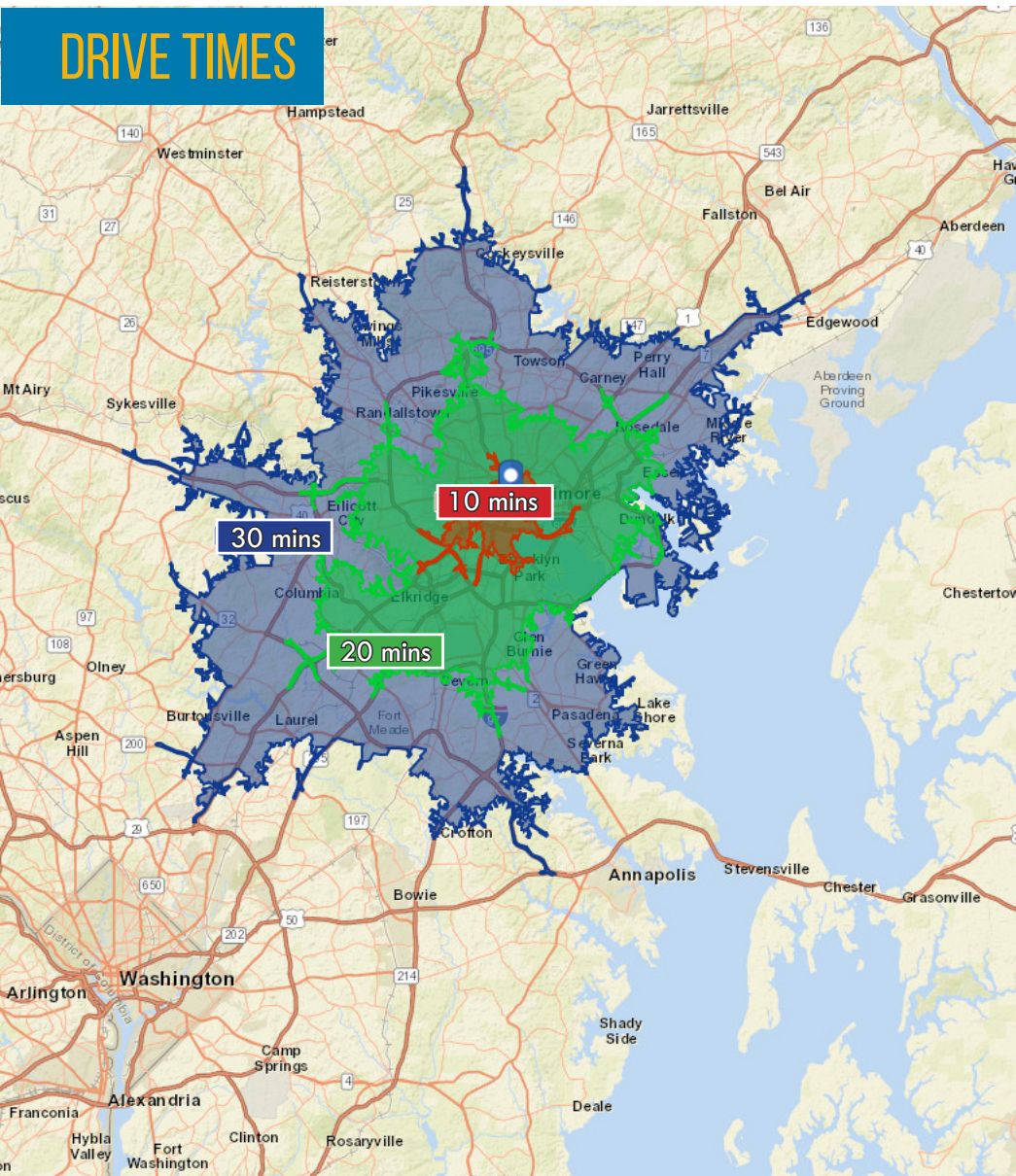
Baltimore City, Maryland

# LOCATION

HARBOR COURT | 575 S CHARLES STREET | BALTIMORE, MARYLAND 21201

THE  
RMR  
GROUP

## DRIVE TIMES





# FOR LEASE

Baltimore City, Maryland

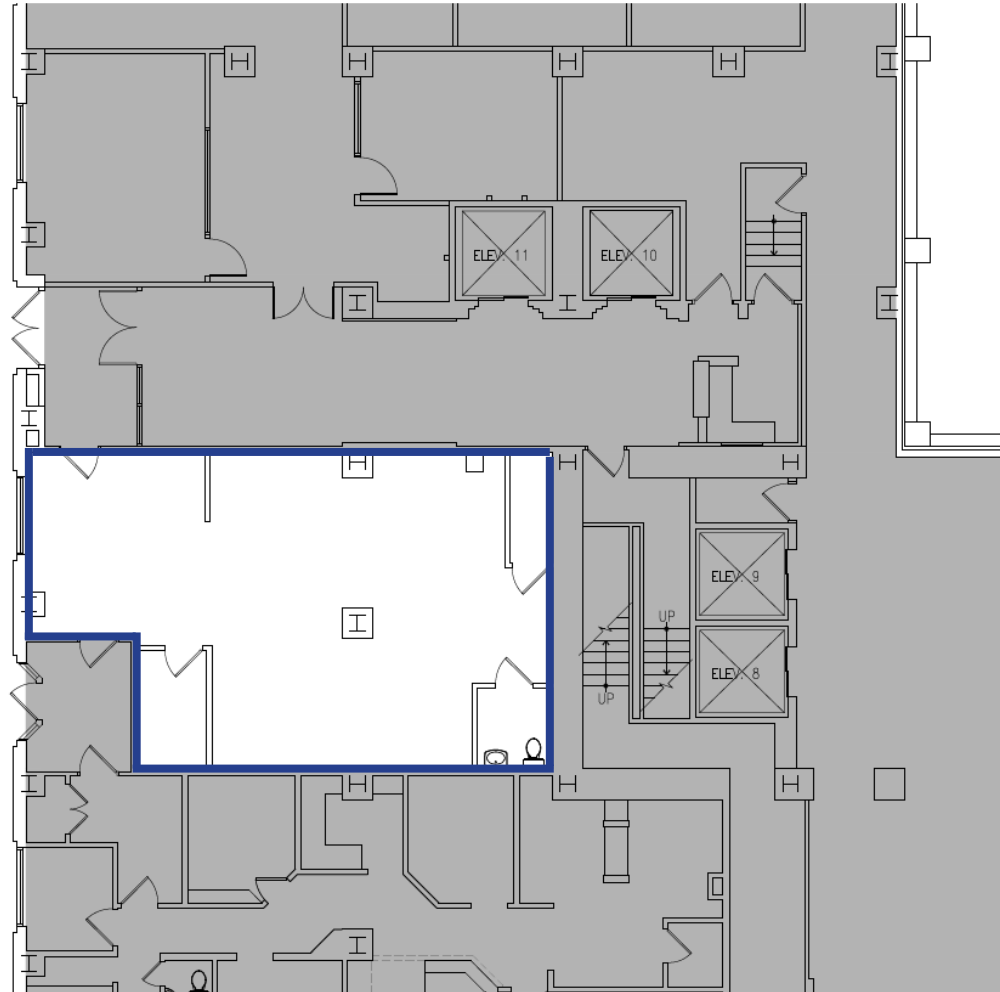
# FLOOR PLANS

HARBOR COURT | 575 S CHARLES STREET | BALTIMORE, MARYLAND 21201

THE  
RMR  
GROUP

SUITE	SIZE
130	1,016 sf
150	1,390 sf
203	1,685 sf*
208	2,042 sf*
302	620 sf
305	3,398 sf
310**	2,291 sf**
315	2,876 sf
400	2,240 sf
402	2,963 sf
402B	746 sf
408	1,830 sf
502	2,299 sf
504	577 sf
506	1,775 sf

## SUITE 130 1,016 SF



\*2nd floor suites can be combined to total 3,727 sf

\*\* Suite 310 - Available 12/1/2020



Terri Harrington | Senior Vice President  
☎ 443.573.3213 ✉ tharrington@mackenziecommercial.com

Austin Harrington | Real Estate Advisor  
☎ 443.573.3204 ✉ aharrington@mackenziecommercial.com

MacKenzie Commercial Real Estate Services, LLC • 443-573-3200 • 111 S. Calvert Street, Suite 2800 | Baltimore, Maryland 21202 • www.MACKENZIECOMMERCIAL.com

# FOR LEASE

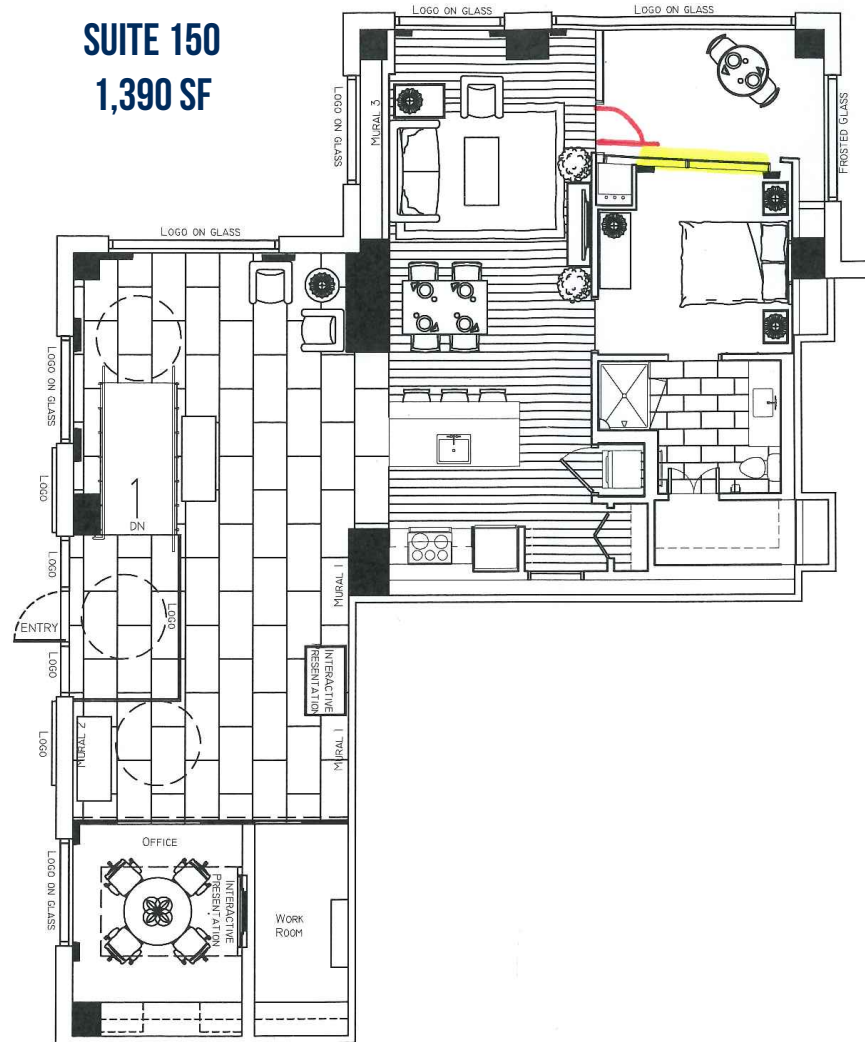
Baltimore City, Maryland

## FLOOR PLANS

HARBOR COURT | 575 S CHARLES STREET | BALTIMORE, MARYLAND 21201

THE  
RMR  
GROUP

**SUITE 150**  
**1,390 SF**



# FOR LEASE

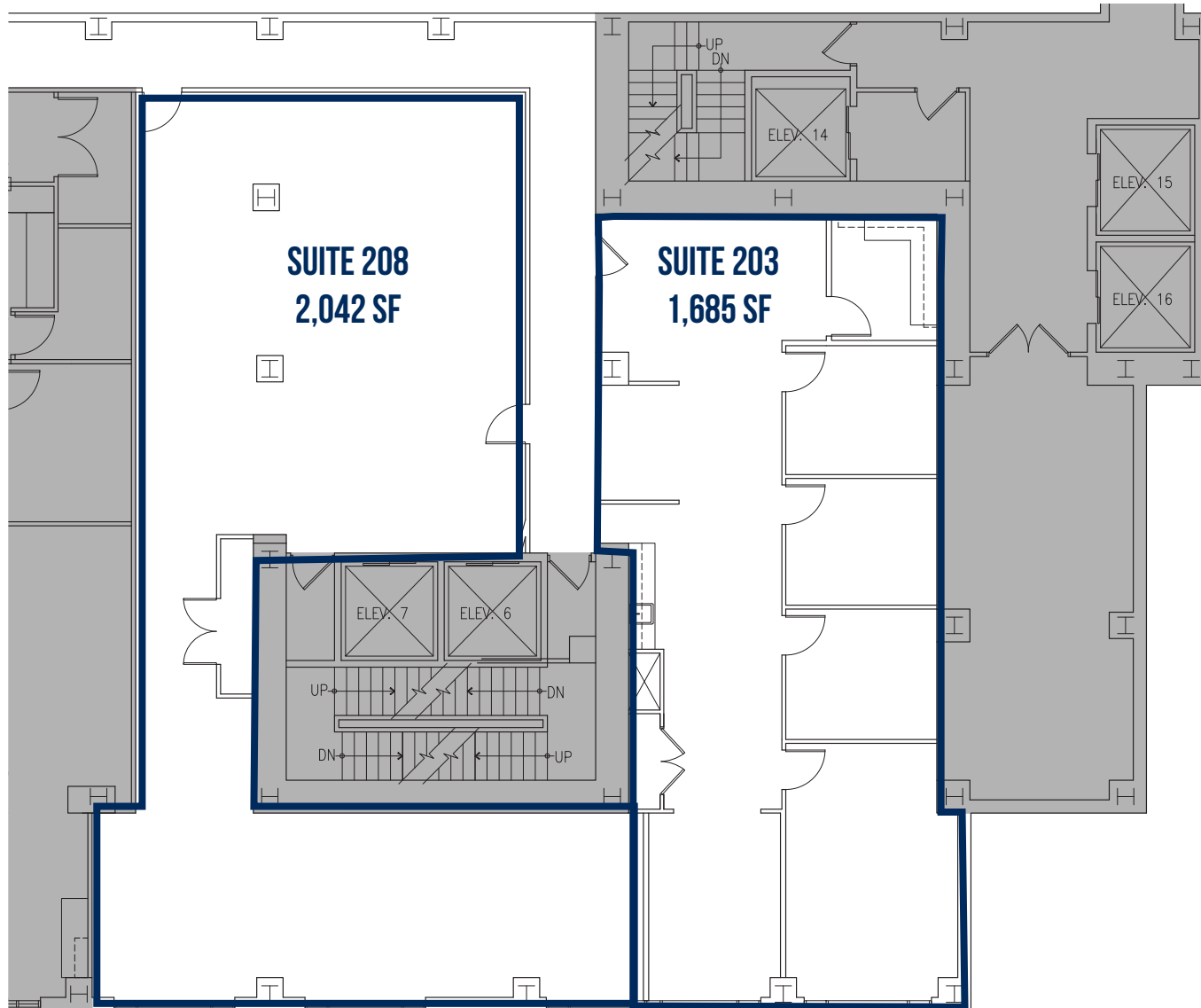
Baltimore City, Maryland

## FLOOR PLANS

HARBOR COURT | 575 S CHARLES STREET | BALTIMORE, MARYLAND 21201

THE  
RMR  
GROUP

SUITES CAN BE COMBINED TO  
A TOTAL OF  
3,727 SF



# FOR LEASE

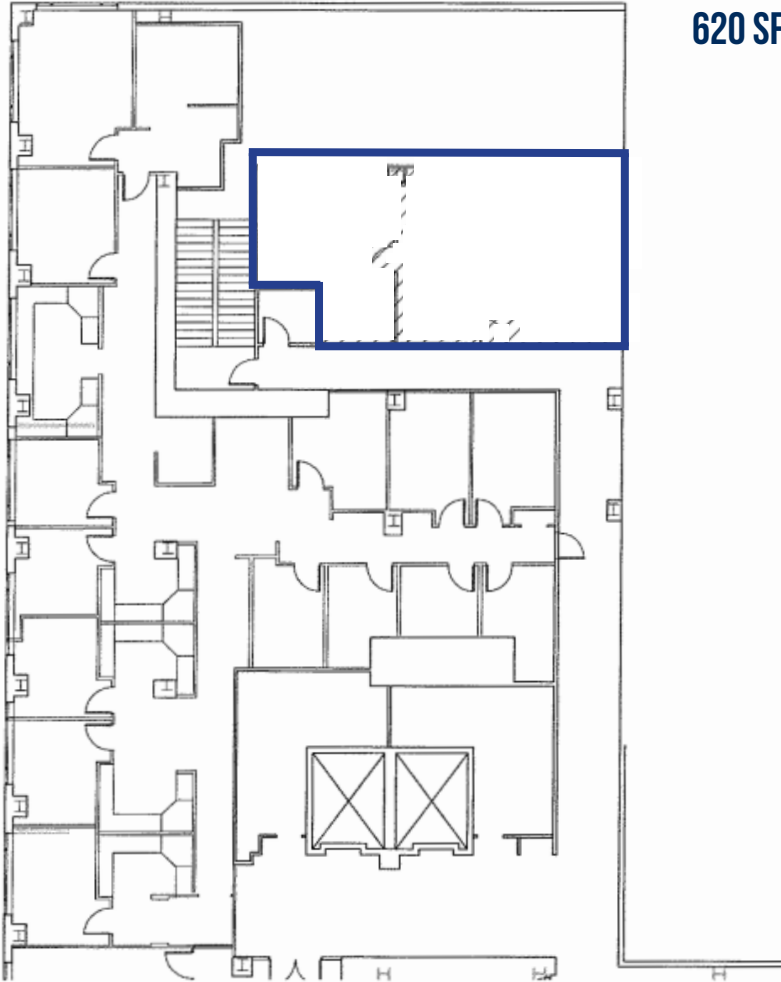
Baltimore City, Maryland

## FLOOR PLANS

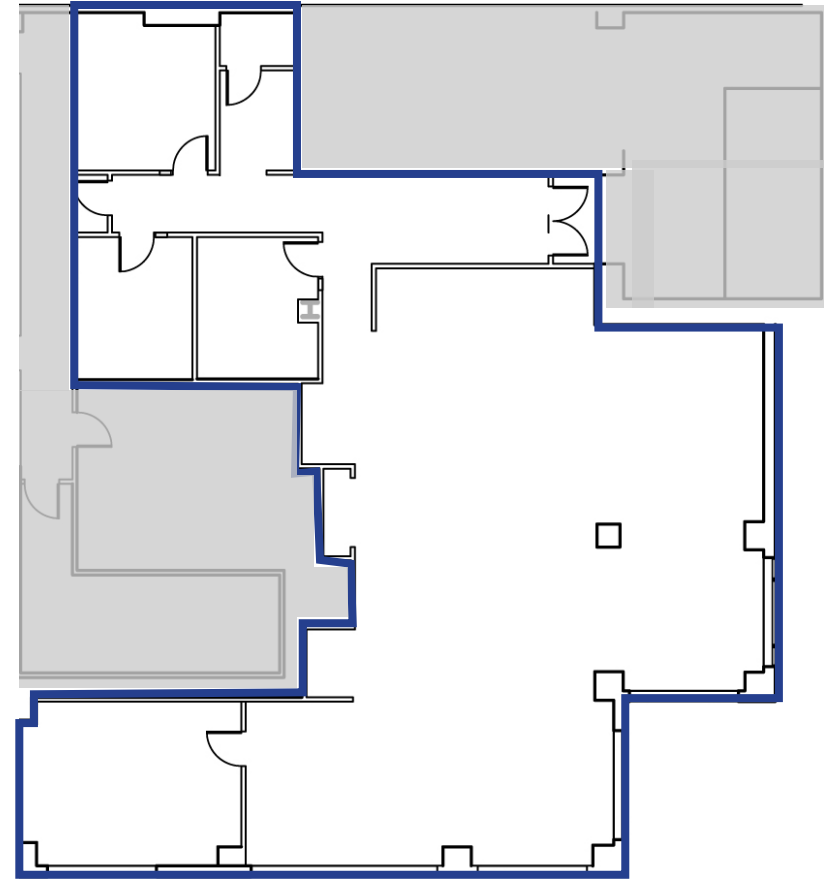
HARBOR COURT | 575 S CHARLES STREET | BALTIMORE, MARYLAND 21201

THE  
RMR  
GROUP

SUITE 302  
620 SF



SUITE 305  
3,398 SF



# FOR LEASE

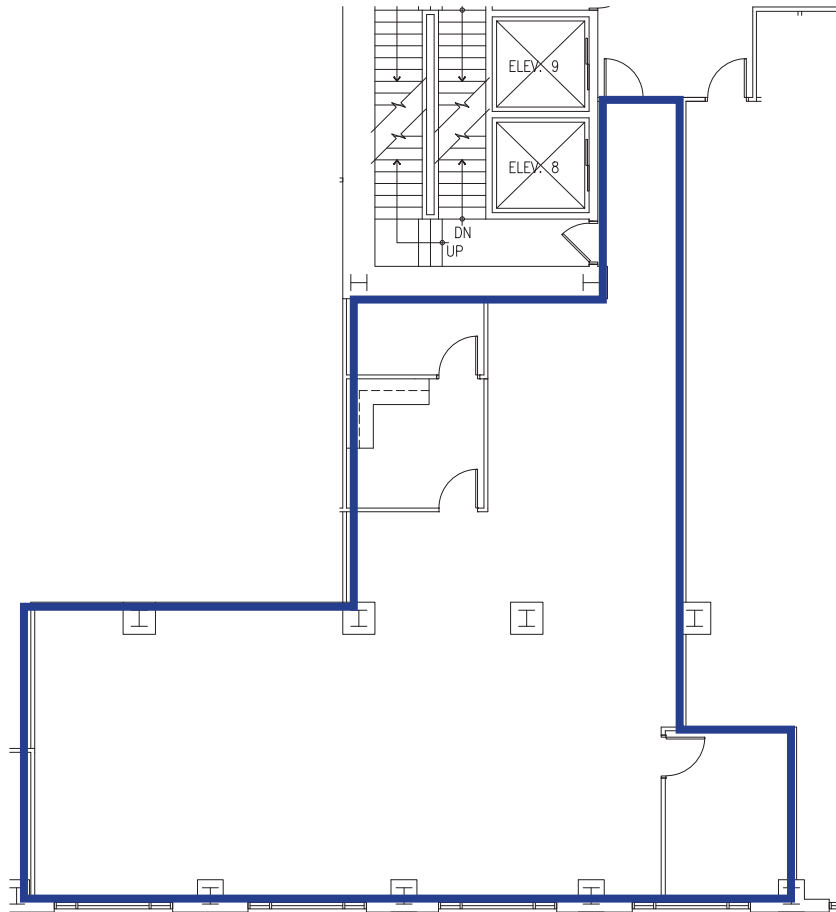
Baltimore City, Maryland

# FLOOR PLANS

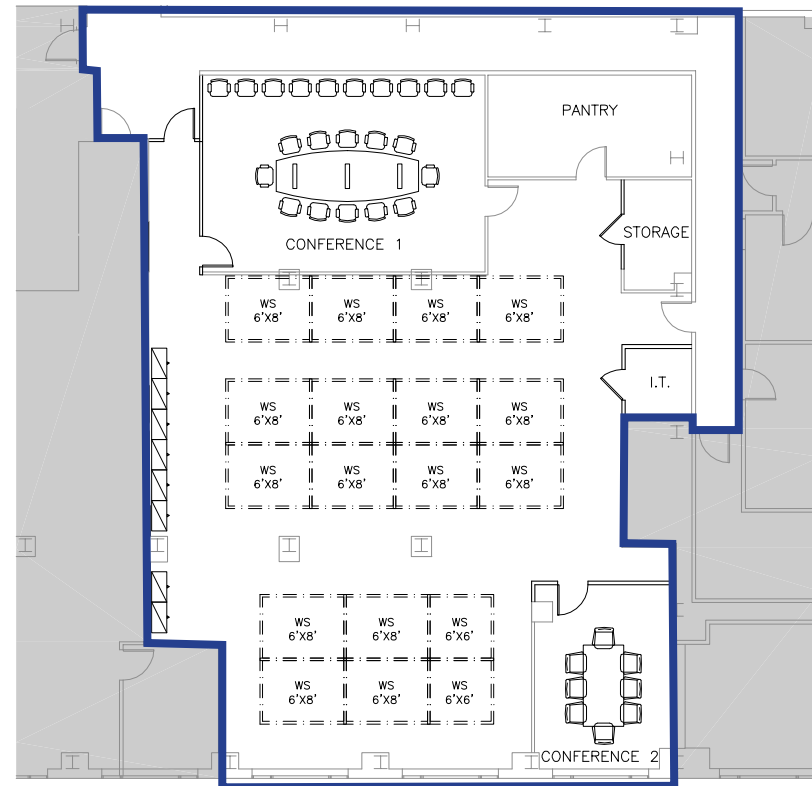
HARBOR COURT | 575 S CHARLES STREET | BALTIMORE, MARYLAND 21201

THE  
RMR  
GROUP

SUITE 310 - AVAILABLE 12/1/2020  
2,291 SF



SUITE 315  
3,876 SF



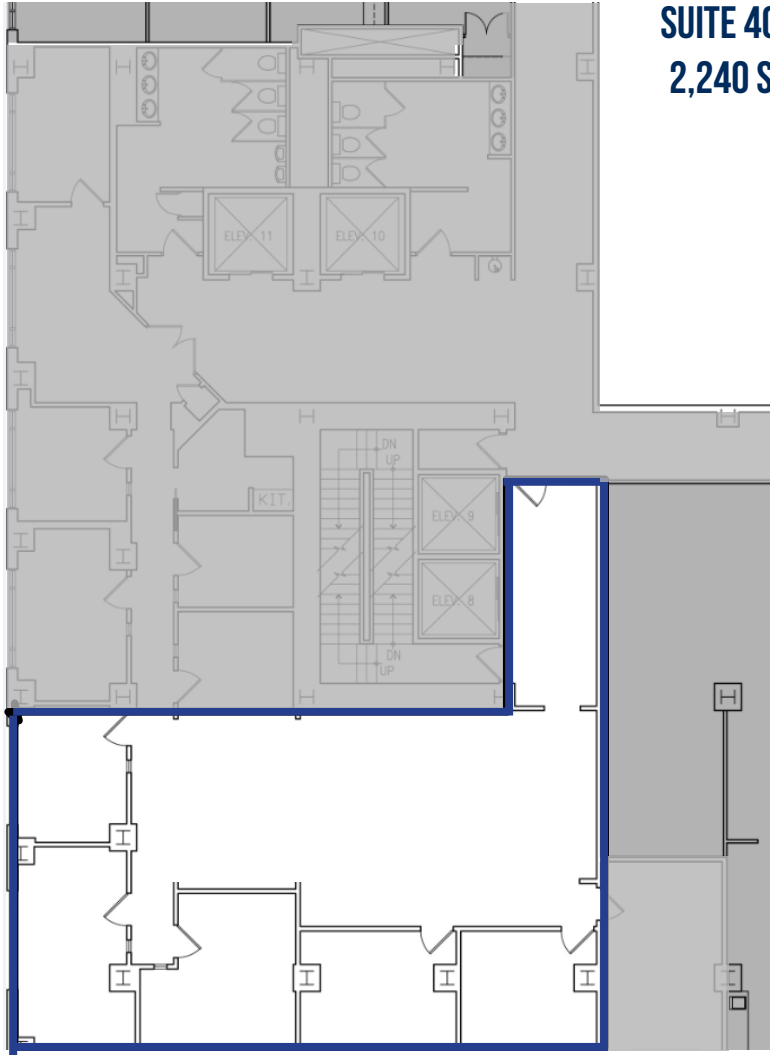
# FOR LEASE

Baltimore City, Maryland

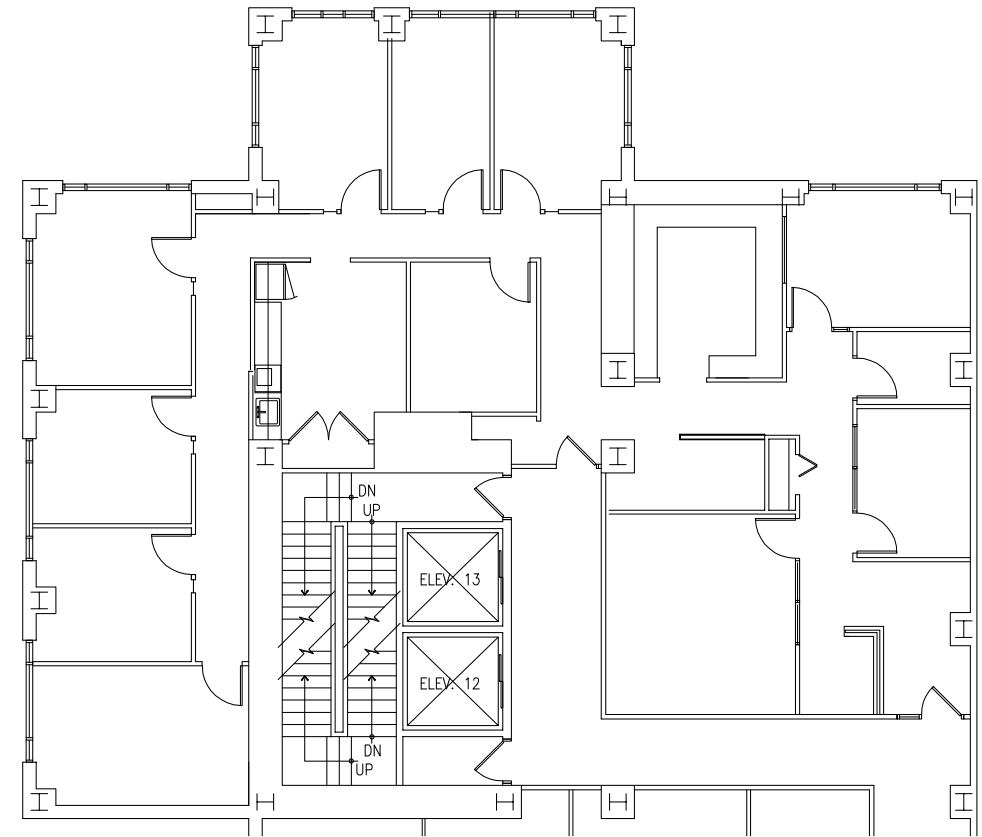
# FLOOR PLANS

HARBOR COURT | 575 S CHARLES STREET | BALTIMORE, MARYLAND 21201

THE  
RMR  
GROUP



**SUITE 400**  
**2,240 SF**



**SUITE 402**  
**2,963 SF**



# FOR LEASE

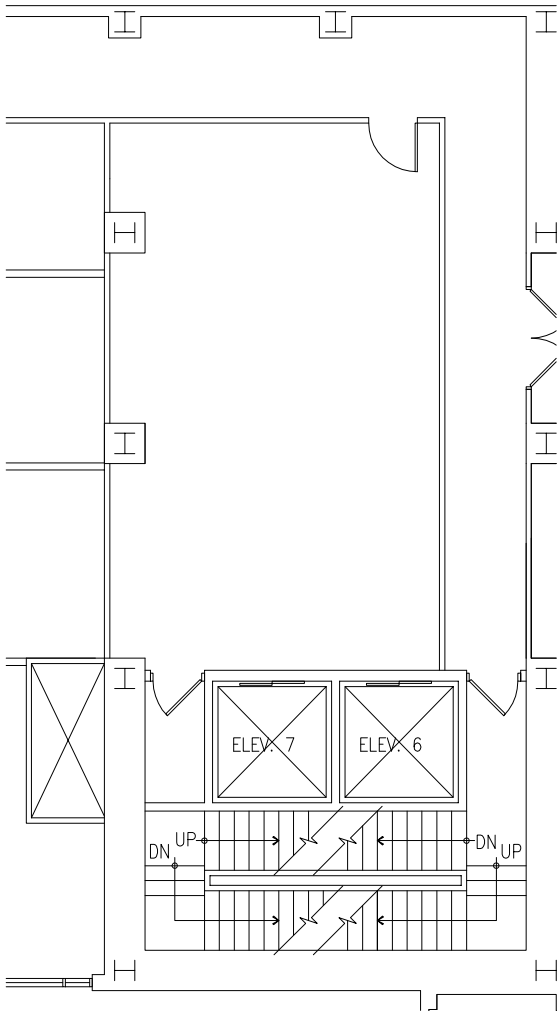
Baltimore City, Maryland

## FLOOR PLANS

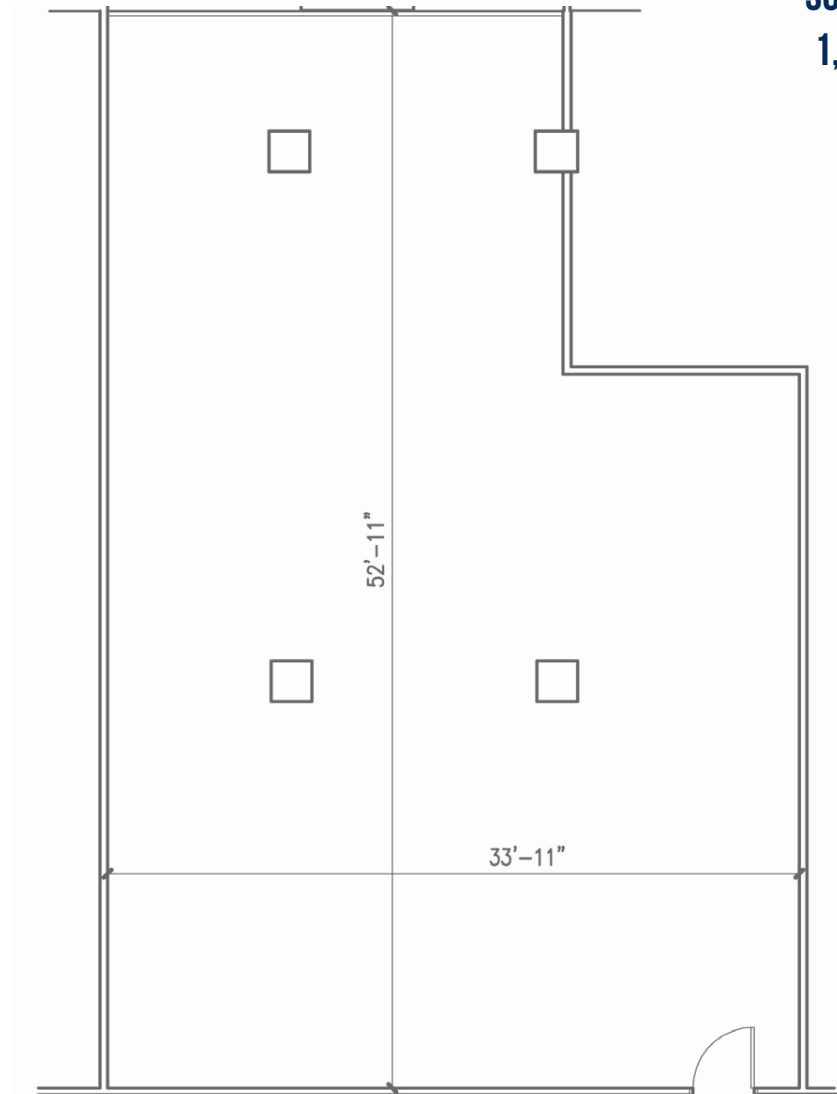
HARBOR COURT | 575 S CHARLES STREET | BALTIMORE, MARYLAND 21201

THE  
RMR  
GROUP

**SUITE 402B**  
746 SF



**SUITE 408**  
1,830 SF



# FOR LEASE

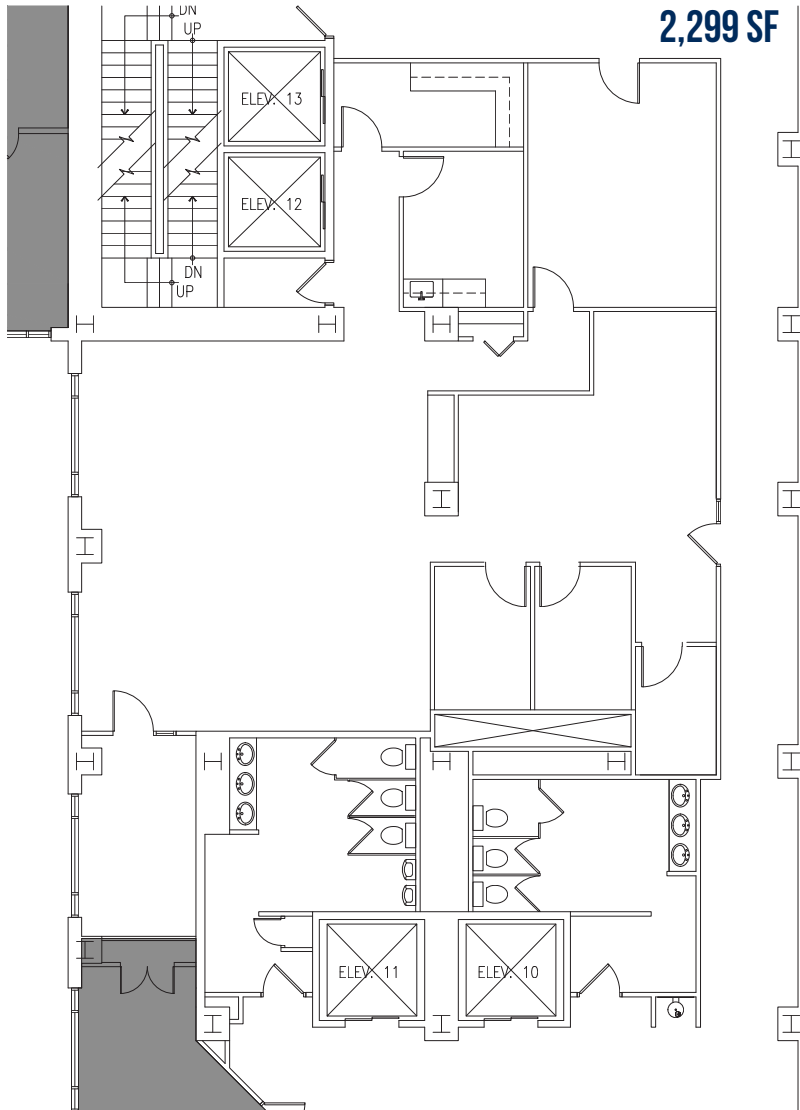
Baltimore City, Maryland

# FLOOR PLANS

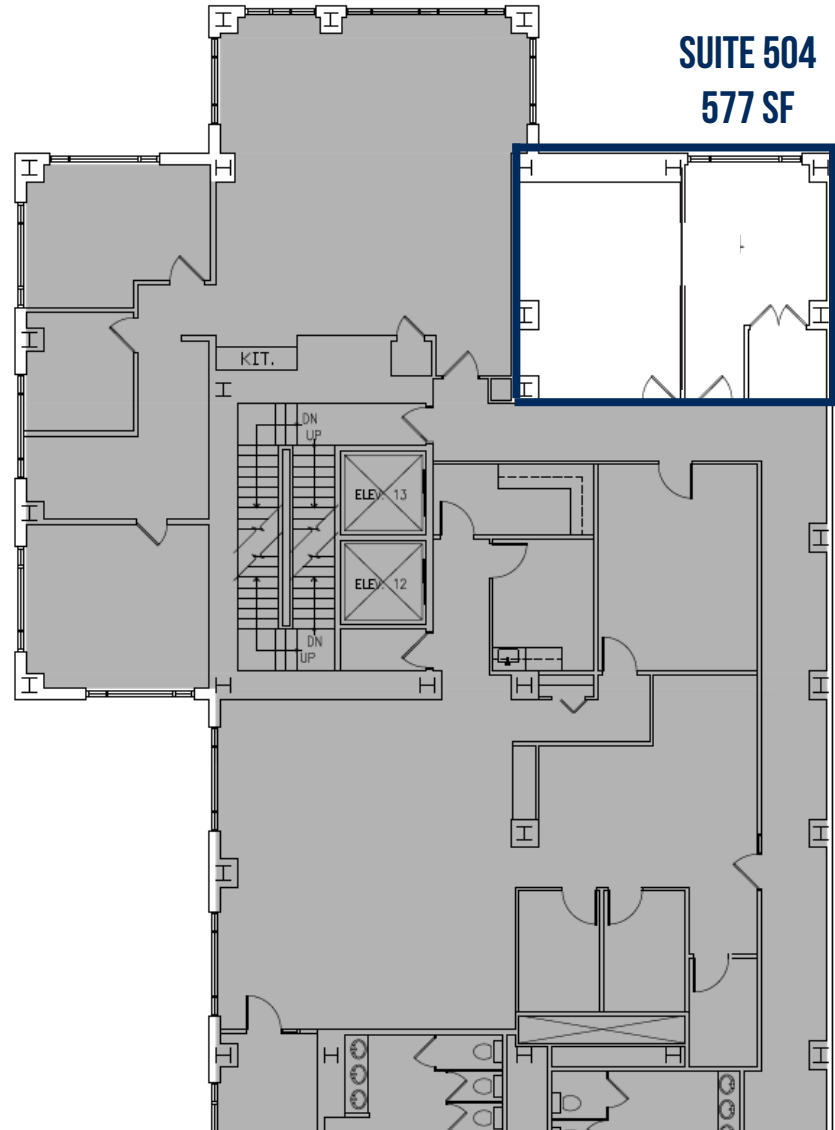
HARBOR COURT | 575 S CHARLES STREET | BALTIMORE, MARYLAND 21201

THE  
RMR  
GROUP

**SUITE 502**  
2,299 SF



**SUITE 504**  
577 SF



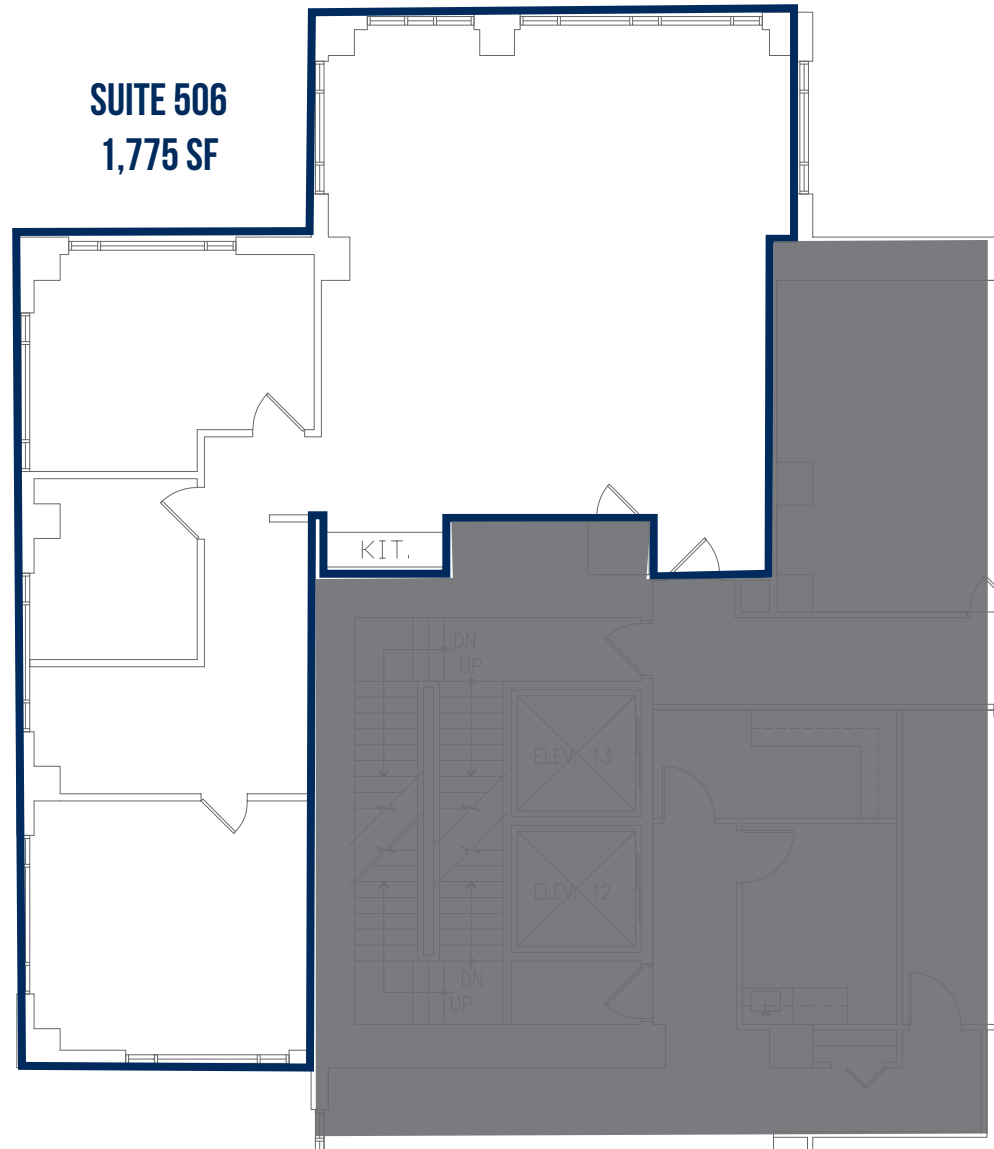
# FOR LEASE

Baltimore City, Maryland

## FLOOR PLANS

HARBOR COURT | 575 S CHARLES STREET | BALTIMORE, MARYLAND 21201

THE  
RMR  
GROUP



SUITE 506  
1,775 SF

KIT.

DN  
UP

ELEV. 13

ELEV. 12

DN  
UP