

# FOR SALE

 Baltimore County, MD

# 606 E JOPPA ROAD

606 E JOPPA ROAD | TOWSON, MARYLAND 21286

## AVAILABLE

4,385 sf

## ZONING

RO (Residential Office)

## TRAFFIC COUNT

16,674 AADT (E Joppa Road)

## SALE PRICE

\$749,500

## HIGHLIGHTS

- ▶ Highly visible location, close to Downtown Towson and East Joppa Road frontage
- ▶ Free On-Site Parking
- ▶ Immaculate condition: Upgraded interior improvements
- ▶ Three floors/individual suites in main building with separate entrances
- ▶ Annex Building



 **MACKENZIE**  
COMMERCIAL REAL ESTATE SERVICES, LLC

**Bill Whitty | Senior Vice President & Principal**

☎ 410.494.4862 ✉ [bwhitty@mackenziecommercial.com](mailto:bwhitty@mackenziecommercial.com)

Mackenzie Commercial Real Estate Services, LLC • 410-821-8585 • 2328 W. Joppa Road, Suite 200 | Lutherville-Timonium, Maryland 21093 • [www.MACKENZIECOMMERCIAL.com](http://www.MACKENZIECOMMERCIAL.com)

**Joe Bradley | Senior Vice President & Principal**

☎ 410.494.4892 ✉ [jbradley@mackenziecommercial.com](mailto:jbradley@mackenziecommercial.com)



# FOR SALE

Baltimore County, MD

# AERIAL VIEW

606 EAST JOPPA ROAD | TOWSON, MARYLAND 21286



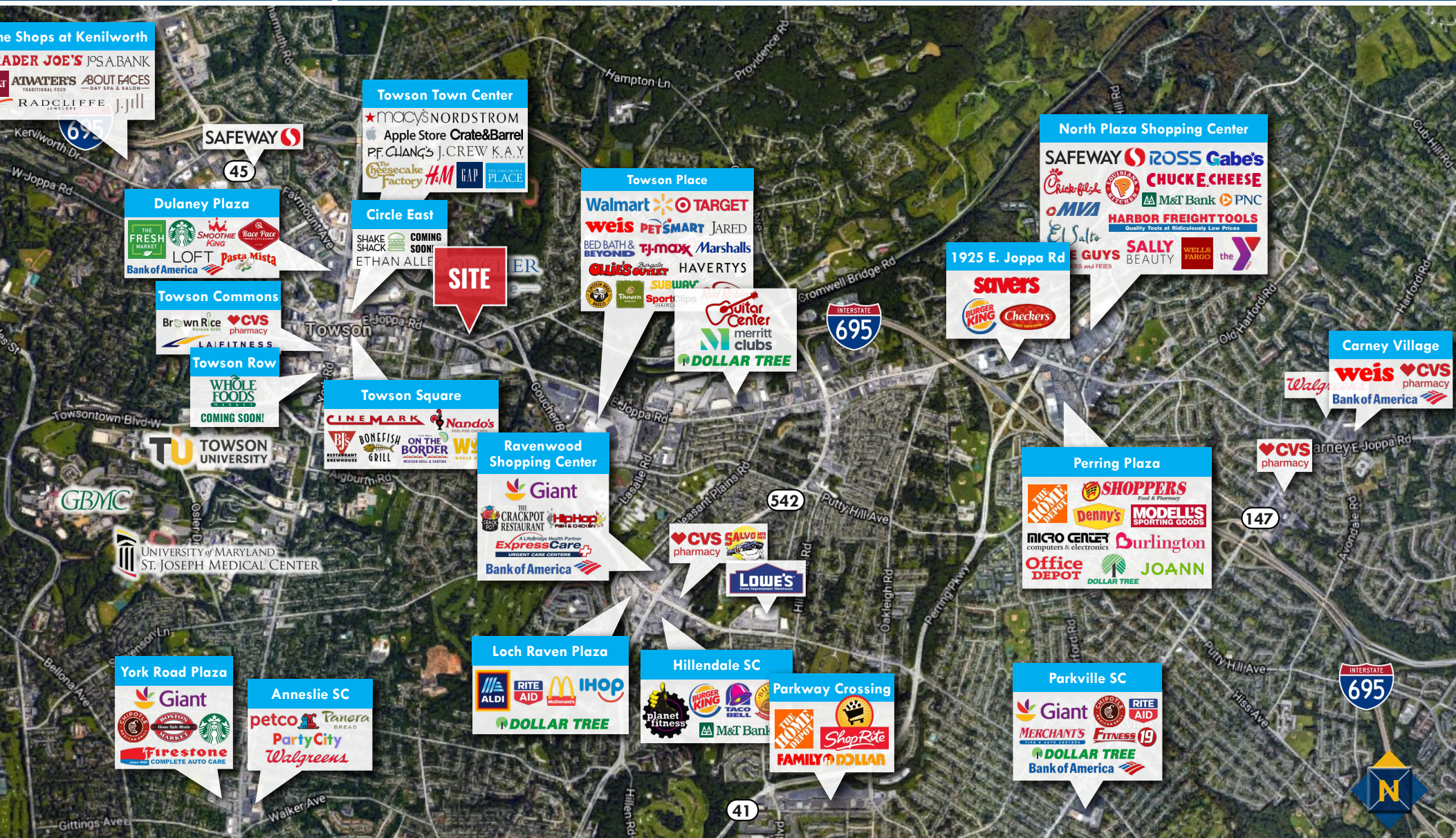


# FOR SALE

Baltimore County, MD

# TRADE AREA

606 EAST JOPPA ROAD | TOWSON, MARYLAND 21286





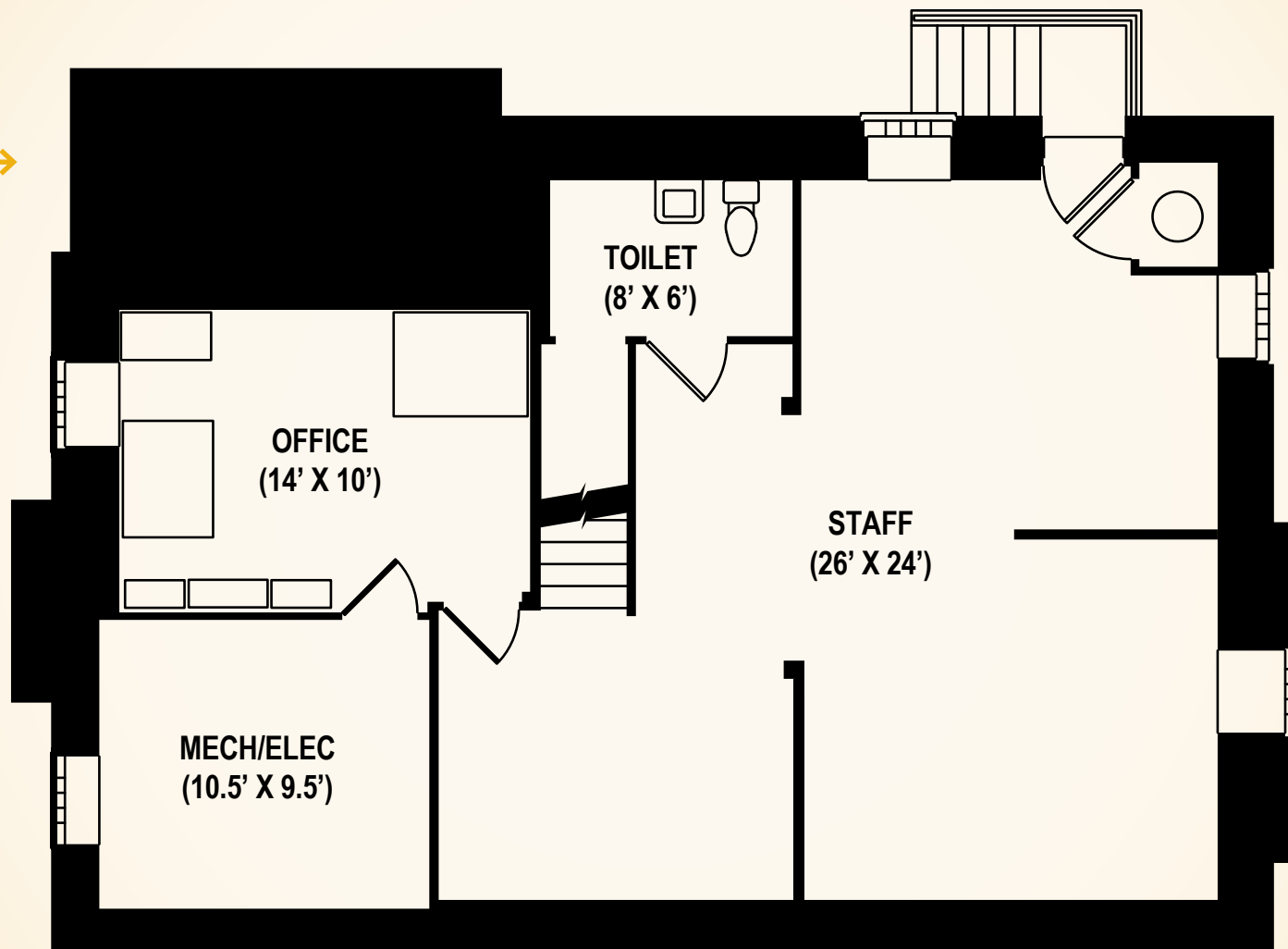
# FOR SALE

 Baltimore County, MD

## FLOOR PLAN: LOWER LEVEL

606 EAST JOPPA ROAD | TOWSON, MARYLAND 21286

1,087 Total SF



# FOR SALE

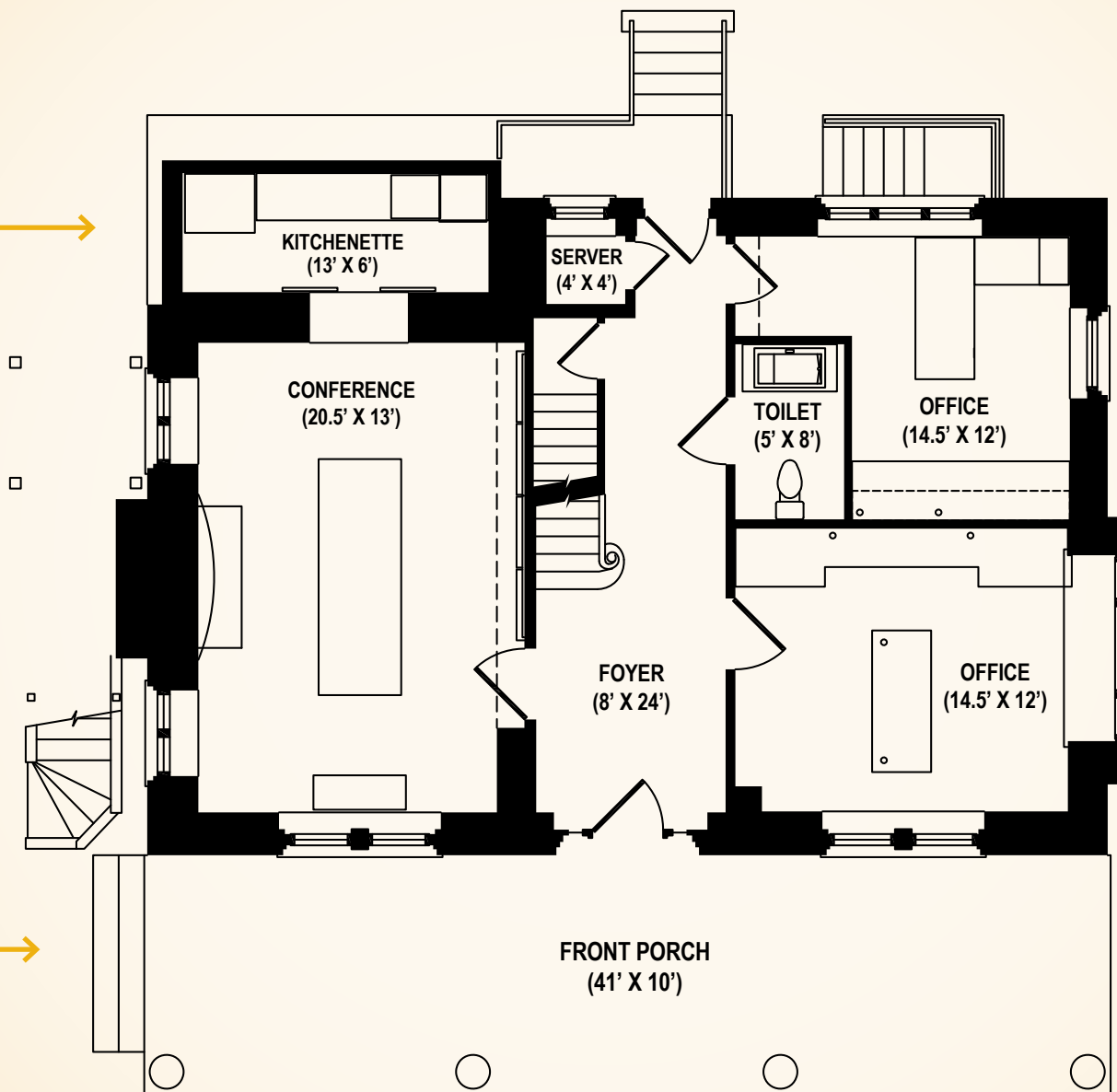
Baltimore County, MD

## FLOOR PLAN: GROUND FLOOR

606 EAST JOPPA ROAD | TOWSON, MARYLAND 21286

1,173 Total SF

410 Total SF



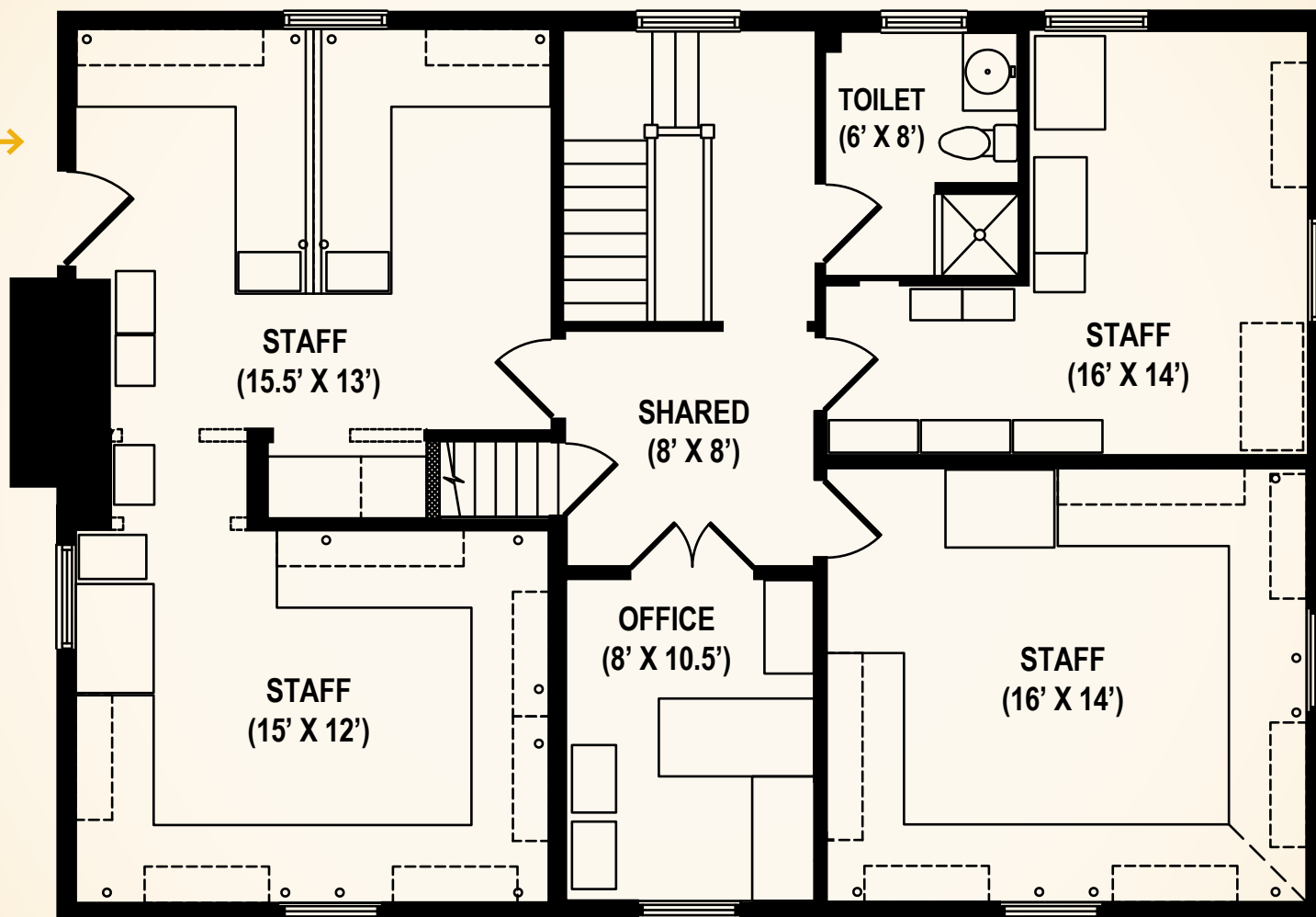
# FOR SALE

Baltimore County, MD

## FLOOR PLAN: SECOND FLOOR

606 EAST JOPPA ROAD | TOWSON, MARYLAND 21286

1,201 Total SF



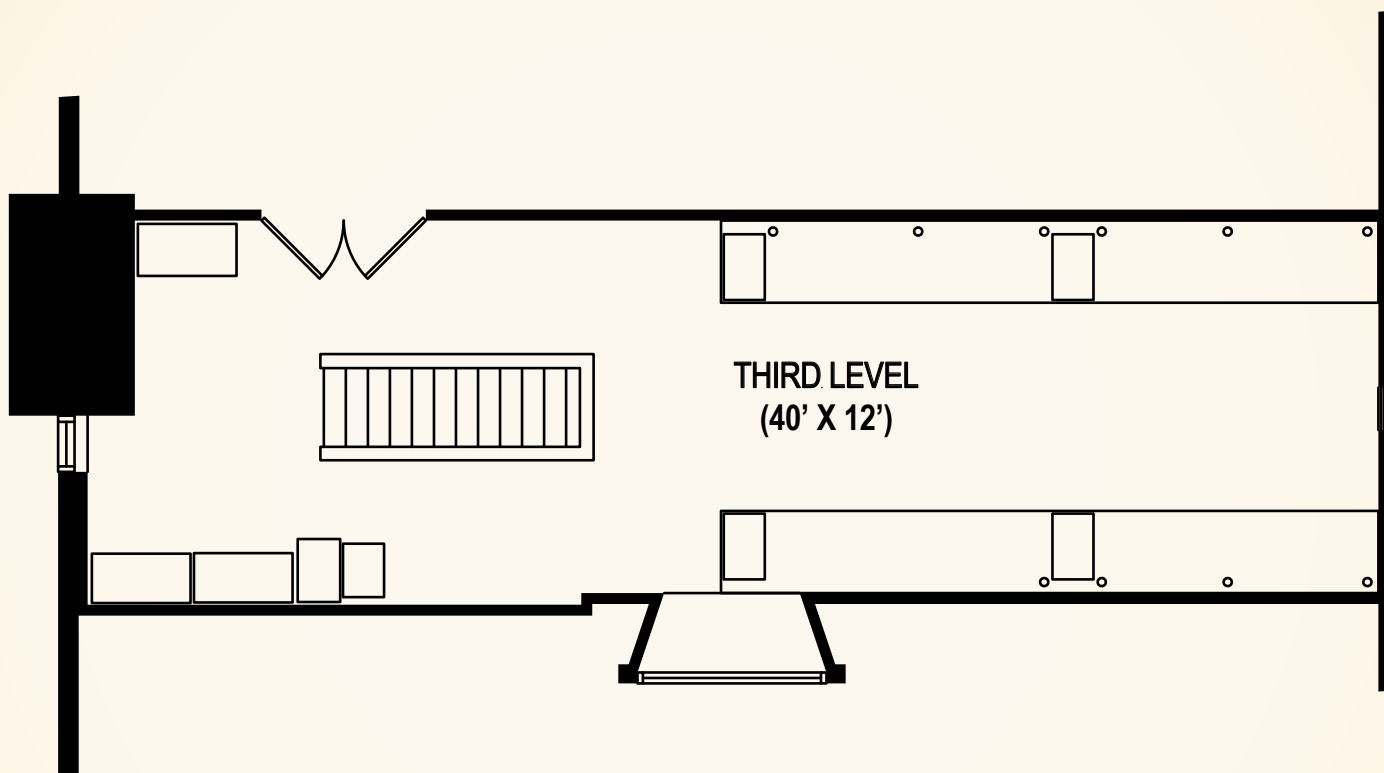
# FOR SALE

 Baltimore County, MD

## FLOOR PLAN: THIRD FLOOR

606 EAST JOPPA ROAD | TOWSON, MARYLAND 21286

510 Total SF



# FOR SALE

 Baltimore County, MD

## FLOOR PLAN: ANNEX BUILDING

606 EAST JOPPA ROAD | TOWSON, MARYLAND 21286

414 Total SF

