



CROWN POINTE II

610 PROFESSIONAL DR | GAITHERSBURG, MD 20879

FOR
SALE



MACKENZIE

COMMERCIAL REAL ESTATE SERVICES, LLC

PROPERTY OVERVIEW

HIGHLIGHTS:

- Only unit available in the building
- Available in 30 days
- Fully finished office suite suitable for general office or medical use
- Excellent access to I-270 providing opportunity to service both Washington and Frederick markets

AVAILABLE:

UNITS 255 & 285:
1,842 SF

BUILDING SIZE:

62,300

STORIES:

2

CONDO FEES:

\$1,228.00

ANNUAL TAXES:

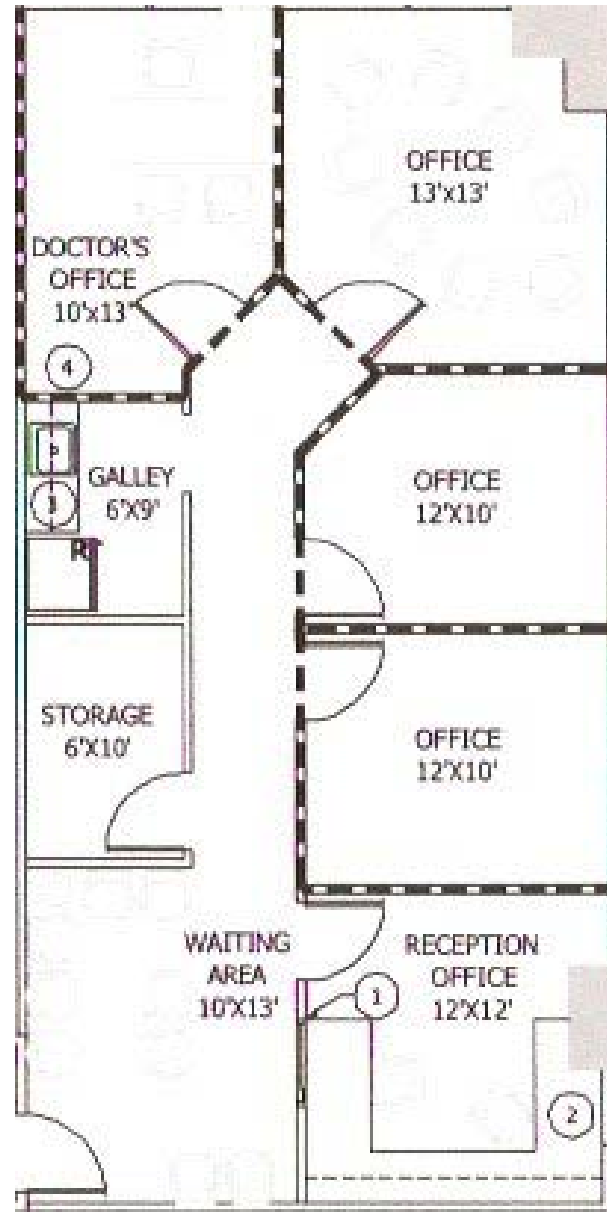
\$2,826.23 + \$2,149.55

SALE PRICE:

\$400,000

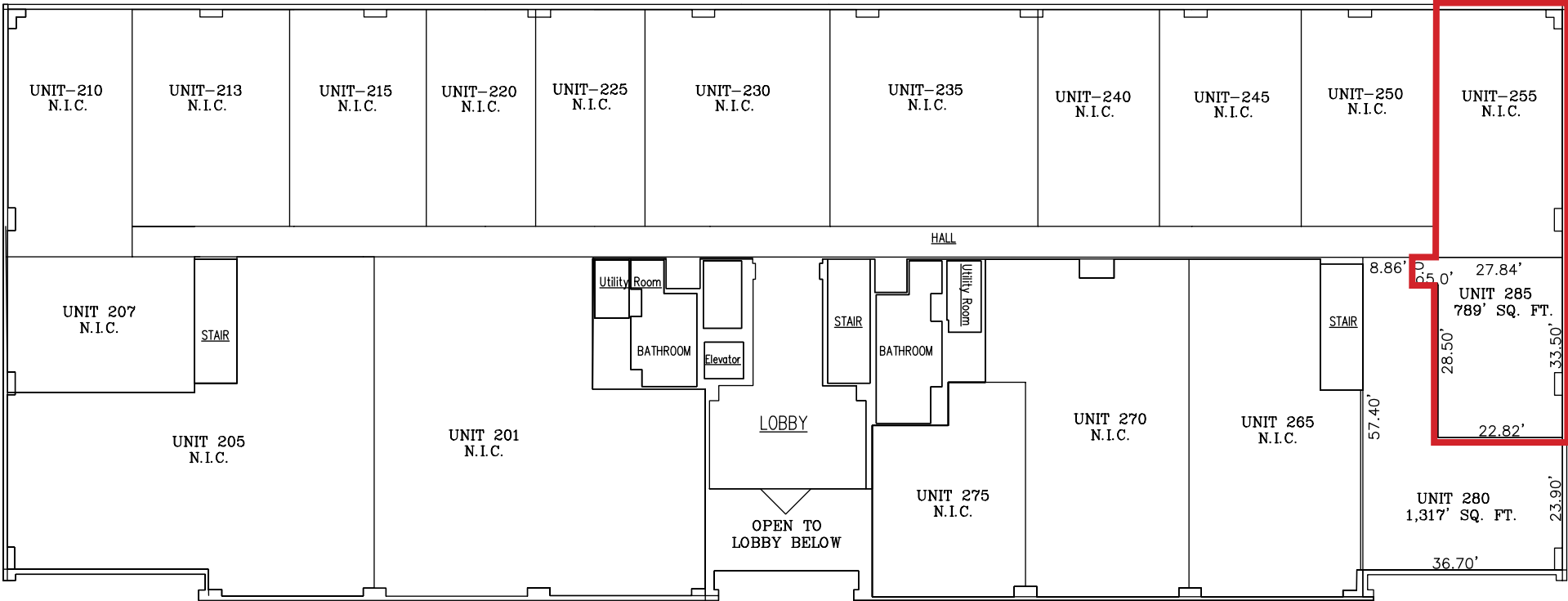


FLOOR PLAN - UNIT 255



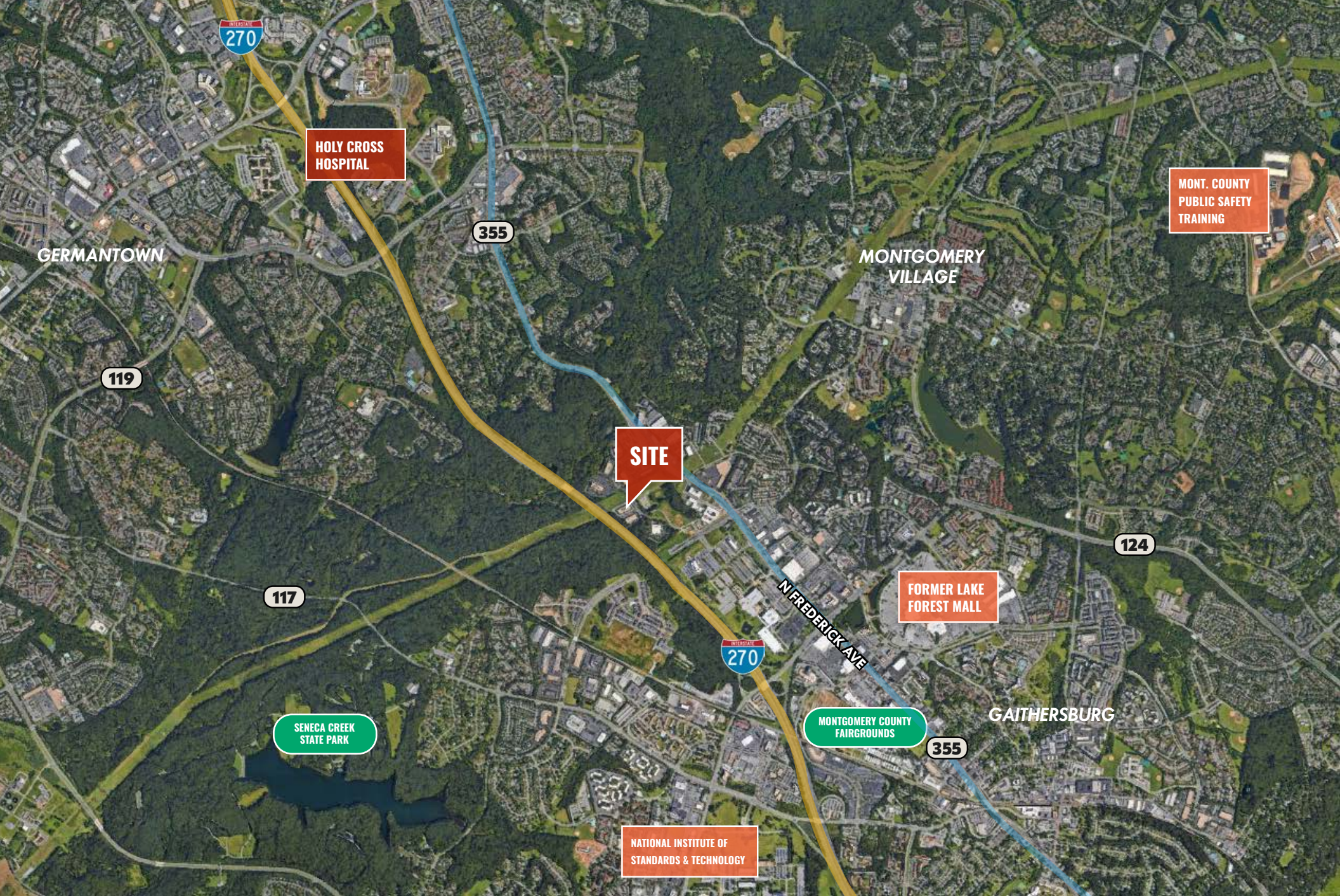
FLOOR PLAN

UNITS 255 & 285:
1,842 SF



2nd. Floor
FLOOR ELEV.=413.17'
CEILING ELEV.=422.17'

AERIAL



HOLY CROSS HOSPITAL

MONT. COUNTY PUBLIC SAFETY TRAINING

GERMANTOWN

355

MONTGOMERY VILLAGE

119

SITE

124

117

FORMER LAKE FOREST MALL

SENECA CREEK STATE PARK

270

N. FREDERICK AVE

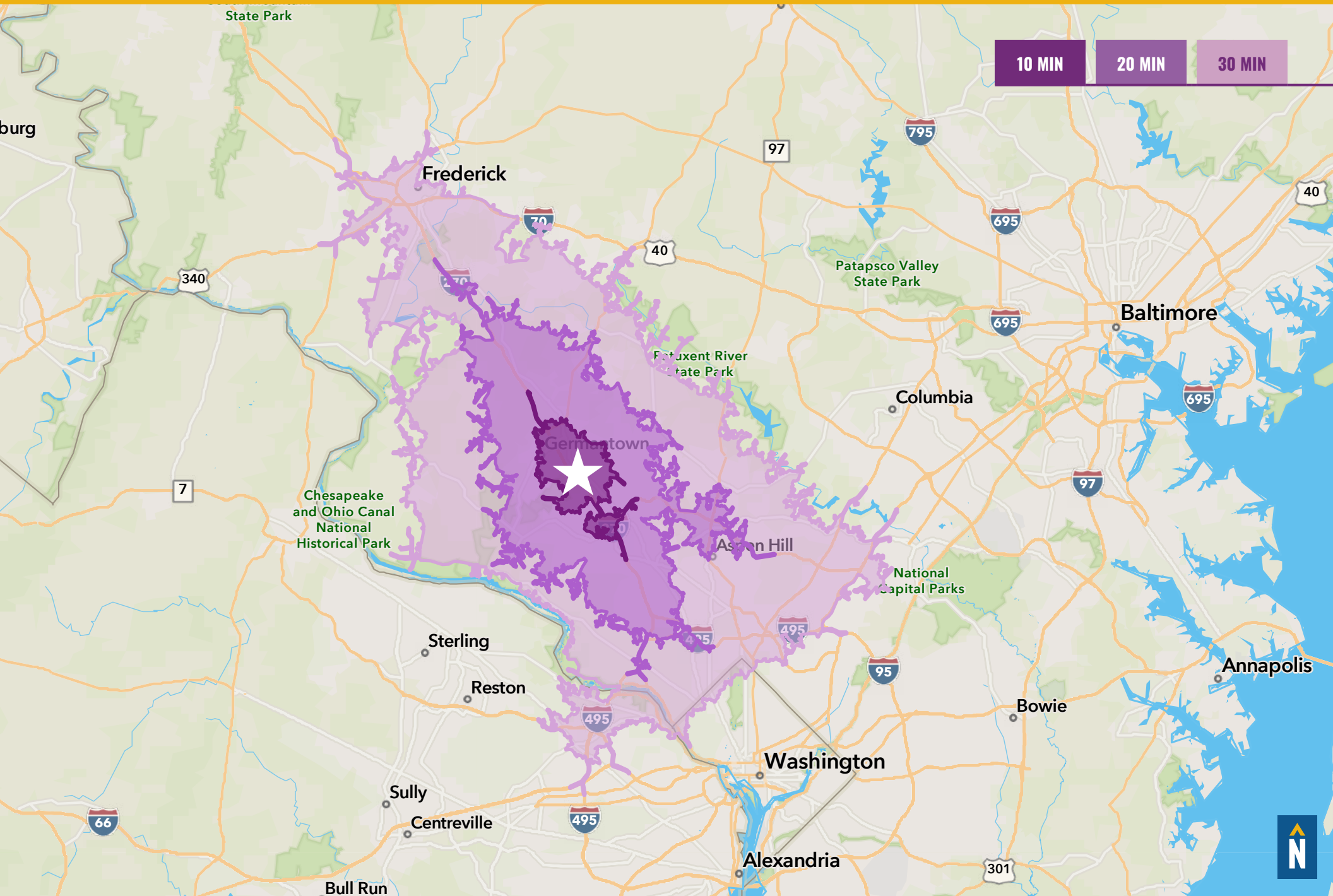
MONTGOMERY COUNTY FAIRGROUNDS

GAITHERSBURG

355

NATIONAL INSTITUTE OF STANDARDS & TECHNOLOGY

DRIVE TIMES



FOR MORE INFO **CONTACT:**



PATRICK SMITH, SIOR

VICE PRESIDENT

410.494.4866

PSMITH@mackenziecommercial.com



CHRIS BOLAND

VICE PRESIDENT

410.494.6644

CBOLAND@mackenziecommercial.com



VISIT **PROPERTY PAGE** FOR MORE INFORMATION.



MACKENZIE

COMMERCIAL REAL ESTATE SERVICES, LLC

410-821-8585

**2328 W. Joppa Road, Suite 200
Lutherville, MD 21093**

OFFICES IN: ANNAPOLIS, MD BALTIMORE, MD BEL AIR, MD COLUMBIA, MD **LUTHERVILLE, MD** CHARLOTTESVILLE, VA

www.MACKENZIECOMMERCIAL.com

No warranty or representation, expressed or implied, is made as to the accuracy of the information contained herein, and same is submitted subject to errors, omissions, change of price, rental or other conditions, withdrawal without notice, and to any specific listing conditions imposed by our principals.