

# FOR LEASE

 Harford County, Maryland

## OFFICE SPACE FOR LEASE

624 S. MAIN STREET

BEL AIR, MARYLAND 21014



# FOR LEASE

 Harford County, Maryland

# 624 S. MAIN STREET

BEL AIR, MARYLAND 21014

## AVAILABLE

2,000 sf

## LOT SIZE

0.32 Acres

## ZONING

B1

## TRAFFIC COUNT

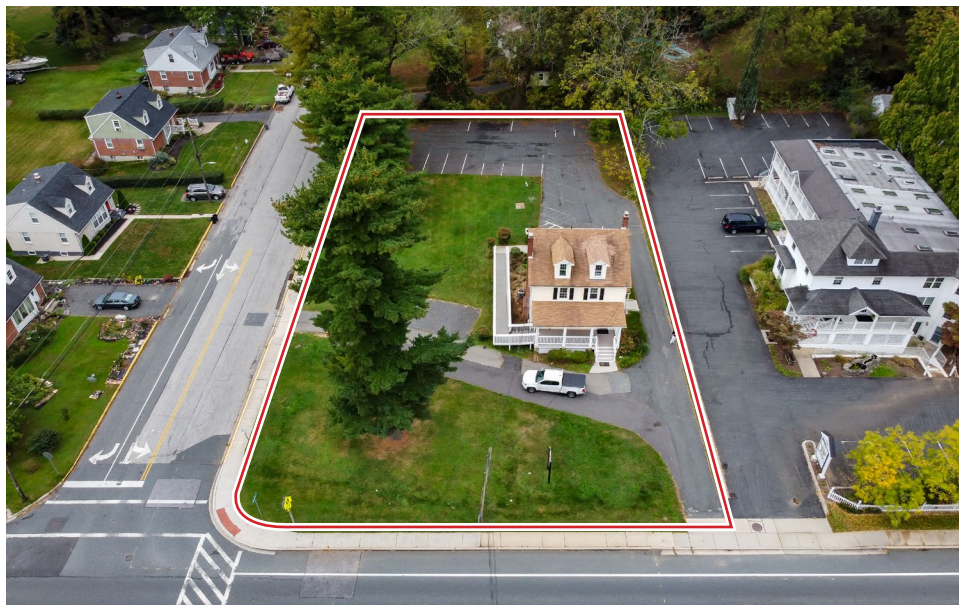
18,671 AADT (S. Main Street)

## RENTAL RATE

\$3,850/Month, Modified Gross

## HIGHLIGHTS

- ▶ Recently renovated office building
- ▶ Great location in the heart of the Bel Air Business District
- ▶ Onsite Parking Lot



STREET VIEW

 **MACKENZIE**  
COMMERCIAL REAL ESTATE SERVICES, LLC

**Tom Mottley** | Senior VP & Principal

☎ 443.573.3217 ✉ [tmottley@mackenziecommercial.com](mailto:tmottley@mackenziecommercial.com)

MacKenzie Commercial Real Estate Services, LLC • 410-879-1900 • 3465 Box Hill Corporate Center Drive, Suite F | Abingdon, Maryland 21009 • [www.MACKENZIECOMMERCIAL.com](http://www.MACKENZIECOMMERCIAL.com)

**Beetle Smith** | Senior Vice President

☎ 443.573.3219 ✉ [bsmith@mackenziecommercial.com](mailto:bsmith@mackenziecommercial.com)



# FOR LEASE



Harford County, Maryland

# LOCAL TRADE AREA

624 S. MAIN STREET | BEL AIR, MARYLAND 21014







## **TOM MOTTLEY**

SENIOR VICE PRESIDENT & PRINCIPAL  
MACKENZIE COMMERCIAL REAL ESTATE SERVICES, LLC

**443.573.3217**

**TMOTTLEY@MACKENZIECOMMERCIAL.COM**



## **BEETLE SMITH**

SENIOR VICE PRESIDENT  
MACKENZIE COMMERCIAL REAL ESTATE SERVICES, LLC

**443.573.3219**

**BSMITH@MACKENZIECOMMERCIAL.COM**



MacKenzie Commercial Real Estate Services, LLC • 410-821-8585 • 3465 Box Hill Corporate Center Drive, Suite F | Abingdon, Maryland 21009 • [www.MACKENZIECOMMERCIAL.com](http://www.MACKENZIECOMMERCIAL.com)

No warranty or representation, expressed or implied, is made as to the accuracy of the information contained herein, and same is submitted subject to errors, omissions, change of price, rental or other conditions, withdrawal without notice, and to any specific listing conditions imposed by our principals.