

FOR SALE

Harford County, Maryland

INDUSTRIAL PROPERTY/LAND

690 PHILADELPHIA ROAD (RT. 7) | JOPPA, MARYLAND 21085

LOT SIZE

14.62 Acres ±

ZONING

LI (Light Industrial District)

SALE PRICE

Negotiable

HIGHLIGHTS

- ▶ Prominent location with an entrance on Philadelphia Road/ Route 7: 9,271 cars per day ±
- ▶ Located just off of Exit 74 from I-95 and the Mountain Road Park & Ride
- ▶ Adjacent to J.B. Hunt Transport Services, Inc. truck terminal
- ▶ Easy access to Mountain Road (Rt. 152), Pulaski Highway (Rt. 40) and Interstate 95
- ▶ Located in an Enterprise Zone
- ▶ Neaby industrial parks include Crossroads Commerce Center, William Paca Industrial Park, Lakeside Business Park
- ▶ 10 min. drive to Aberdeen Proving Ground-Edgewood Area
- ▶ Nearby amenities include ALDI, Wawa, Redner's, Dollar General, Dunkin', Sheetz, Royal Farms



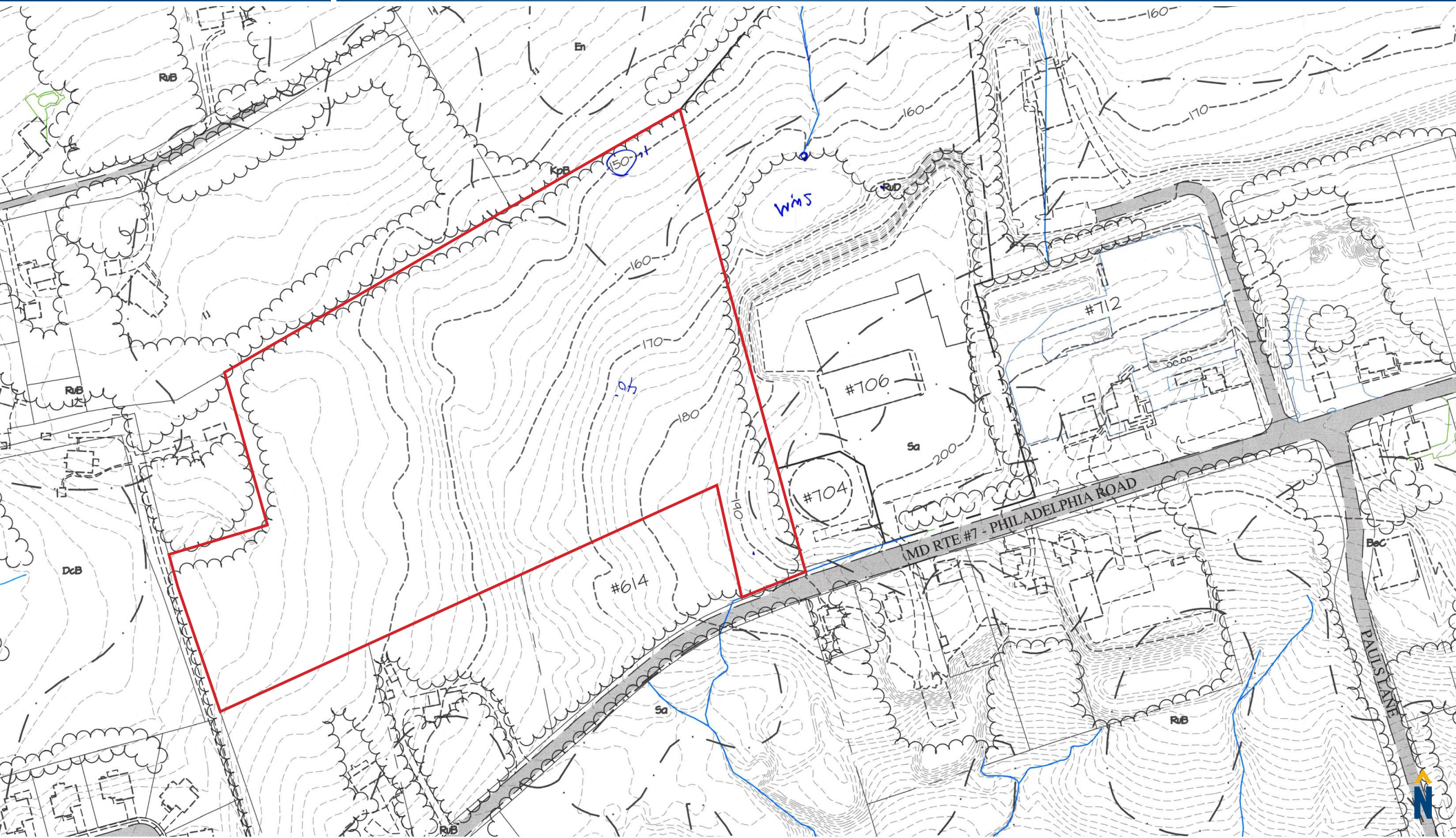
FOR SALE



Harford County, Maryland

SURVEY

690 PHILADELPHIA ROAD (RT. 7) | JOPPA, MARYLAND 21085



Andrew Meeder, SIOR

☎ 410.494.4881

✉ ameeder@mackenziecommercial.com

Daniel Hudak, SIOR

☎ 443.573.3205

✉ dhudak@mackenziecommercial.com

Patrick Smith, SIOR

☎ 410.494.4866

✉ psmith@mackenziecommercial.com

Chris Boland

☎ 410.494.6644

✉ cboland@mackenziecommercial.com

Mackenzie Commercial Real Estate Services, LLC • 443-573-3200 • 111 S. Calvert Street, Suite 2800 | Baltimore, Maryland 21202

• www.MACKENZIECOMMERCIAL.com

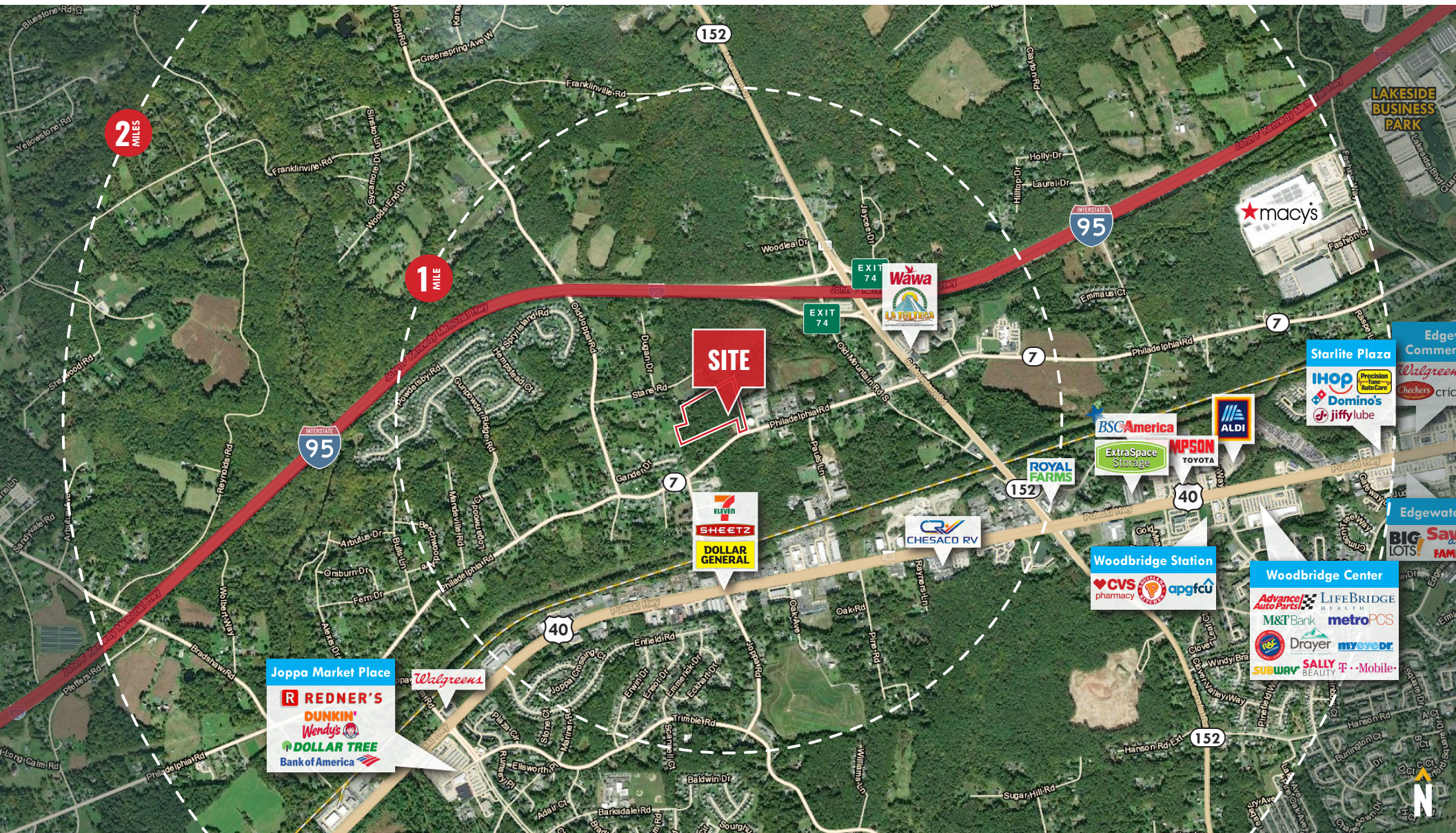
FOR SALE



Harford County, Maryland

TRADE AREA

690 PHILADELPHIA ROAD (RT. 7) | JOPPA, MARYLAND 21085

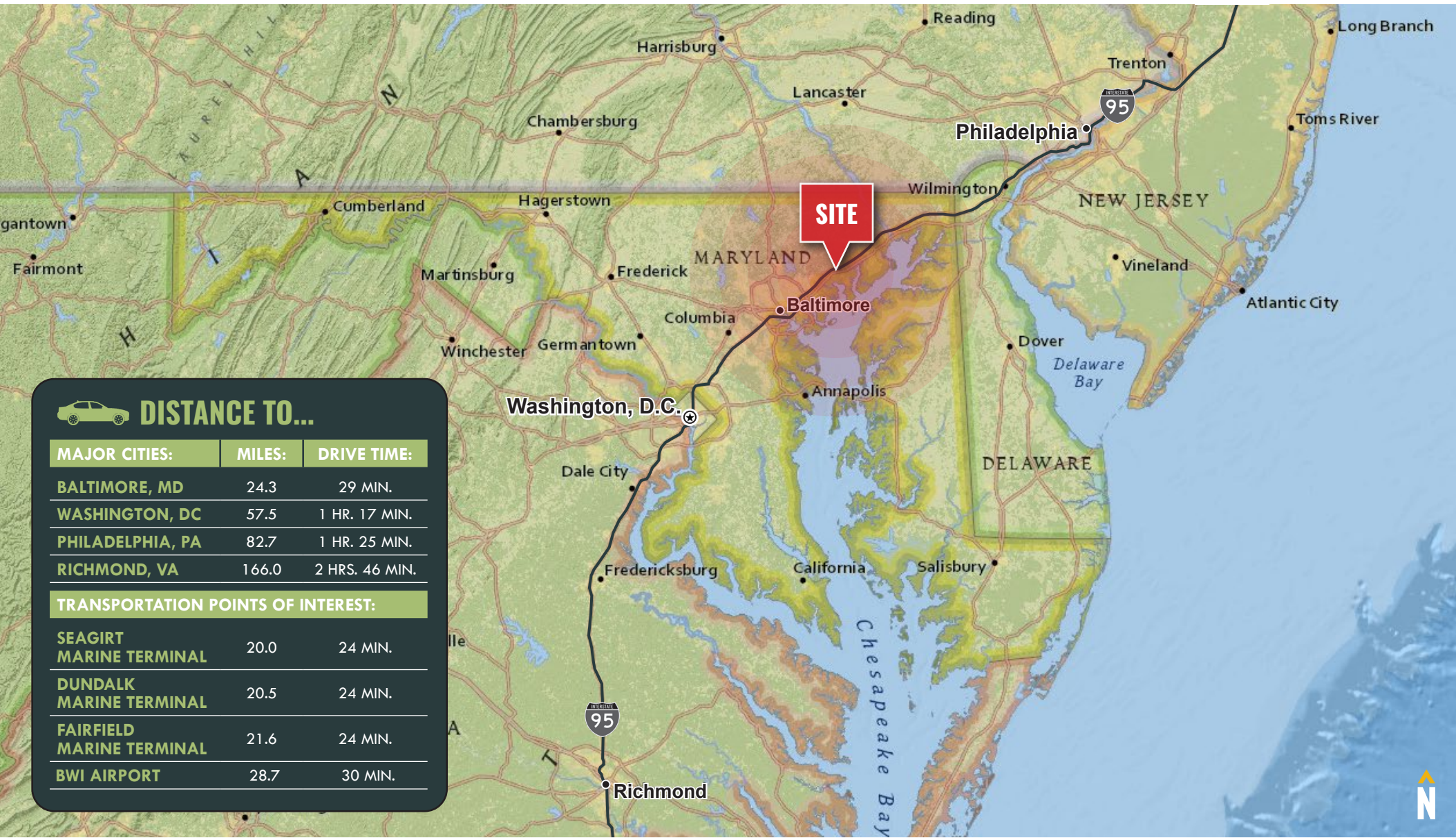


FOR SALE

Harford County, Maryland

LOCATION

690 PHILADELPHIA ROAD (RT. 7) | JOPPA, MARYLAND 21085



DISTANCE TO...

MAJOR CITIES:	MILES:	DRIVE TIME:
BALTIMORE, MD	24.3	29 MIN.
WASHINGTON, DC	57.5	1 HR. 17 MIN.
PHILADELPHIA, PA	82.7	1 HR. 25 MIN.
RICHMOND, VA	166.0	2 HRS. 46 MIN.
TRANSPORTATION POINTS OF INTEREST:		
SEAGIRT MARINE TERMINAL	20.0	24 MIN.
DUNDALK MARINE TERMINAL	20.5	24 MIN.
FAIRFIELD MARINE TERMINAL	21.6	24 MIN.
BWI AIRPORT	28.7	30 MIN.