



INDUSTRIAL/WAREHOUSE BUILDING

700 KANE STREET | BALTIMORE, MARYLAND 21224

FOR
SALE



MACKENZIE

COMMERCIAL REAL ESTATE SERVICES, LLC

PROPERTY OVERVIEW

HIGHLIGHTS:

- 13,000 SF fully conditioned warehouse
- Heavy power (3 phase)
- Wet sprinkler
- Great signage opportunity (on-site billboard, visible from I-95)
- Multiple points of ingress/egress
- Superior highway access (I-95, I-895, I-695)
- Excellent visibility (17,590 cars/day on Kane Street; 147,130 cars/day on I-95)

AVAILABLE:

13,000 SF ±

LOT SIZE:

0.85 ACRES ±

CLEAR HEIGHT:

12' ±

DOCKS:

2 (INTERIOR LOADING WELL)

ZONING:

I-2 (GENERAL INDUSTRIAL DISTRICT)

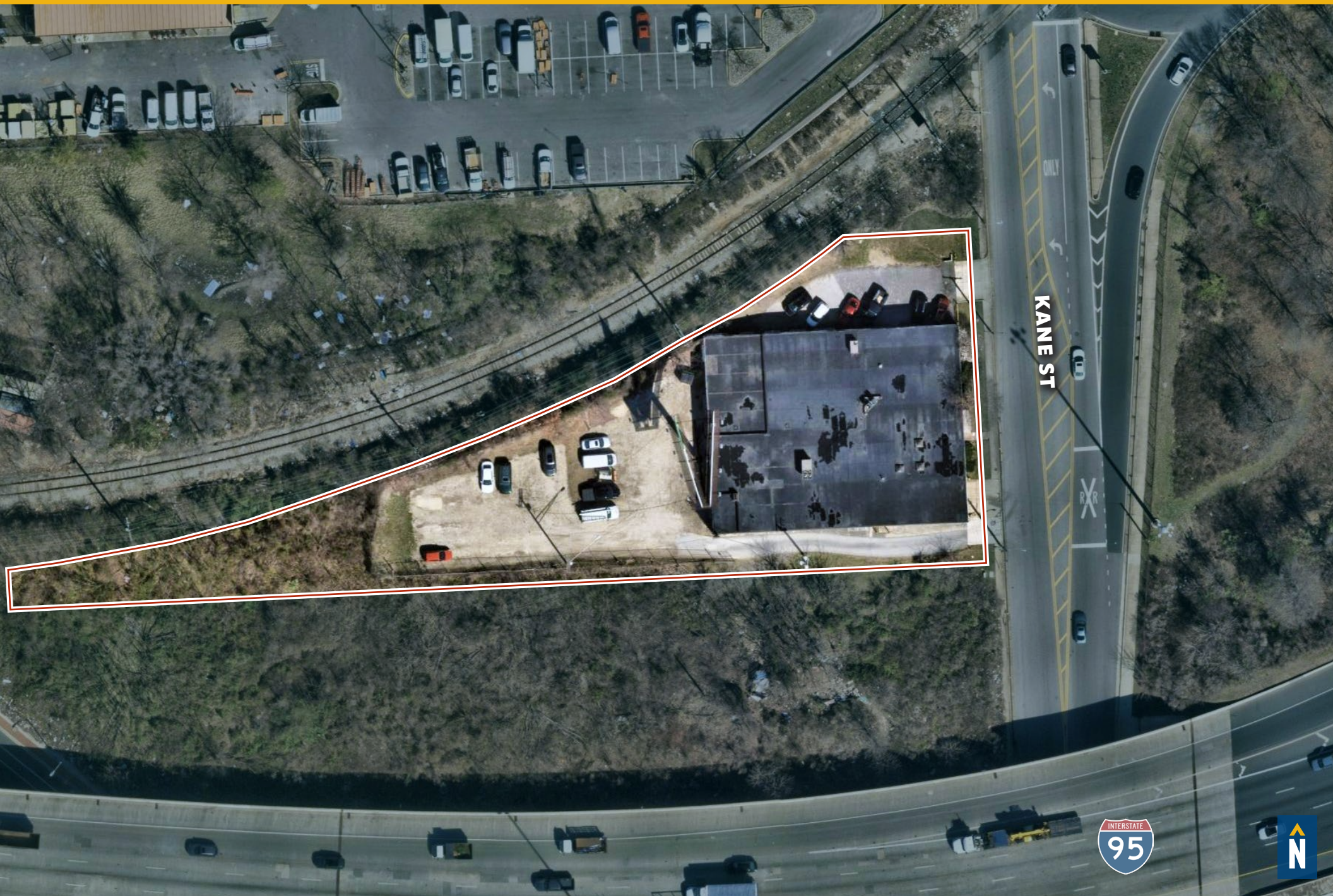
SALE PRICE:

NEGOTIABLE



GOOGLE STREET VIEW

AERIAL



ADDITIONAL PHOTOS



LOCAL BIRDSEYE



BALTIMORE



KANE ST

TRADE AREA

DRIVING DISTANCE TO:

 0.9 MILES
2 MIN. DRIVE

 1.4 MILES
3 MIN. DRIVE

 2.7 MILES
5 MIN. DRIVE

 3.0 MILES
8 MIN. DRIVE
(SEAGIRT MARINE TERMINAL)

 14.2 MILES
13 MIN. DRIVE

BALTIMORE, MD 8.3 MILES
13 MIN.

WASHINGTON, DC 43.1 MILES
1 HR. 0 MIN.

PHILADELPHIA, PA 99.0 MILES
1 HR. 30 MI

RICHMOND, VA 153.0 MILES
2 HRS. 30 MIN.



FOR MORE INFO **CONTACT:**



CHRIS BOLAND

VICE PRESIDENT

410.494.6644

CBOLAND@mackenziecommercial.com



ANDREW MEEDER, SIOR

SENIOR VICE PRESIDENT & PRINCIPAL

410.494.4881

AMEEDER@mackenziecommercial.com



VISIT **PROPERTY PAGE** FOR MORE INFORMATION.



MACKENZIE

COMMERCIAL REAL ESTATE SERVICES, LLC

410-821-8585

**2328 W. Joppa Road, Suite 200
Lutherville, MD 21093**

OFFICES IN: ANNAPOLIS, MD BALTIMORE, MD BEL AIR, MD COLUMBIA, MD **LUTHERVILLE, MD** CHARLOTTESVILLE, VA

www.MACKENZIECOMMERCIAL.com

No warranty or representation, expressed or implied, is made as to the accuracy of the information contained herein, and same is submitted subject to errors, omissions, change of price, rental or other conditions, withdrawal without notice, and to any specific listing conditions imposed by our principals.